

# CONFIDENTIAL OFFERING

Rogue Regency Inn & Suites  
2300 Biddle Road  
Medford, OR 97504



Michael J. Mohn  
Hotel Realty NW  
(206) 409-8274 (Cell)  
[mmohn@hotelrealtynw.com](mailto:mmohn@hotelrealtynw.com)



Taylor Dunn  
Pulver Leever  
(541) 285-5953 (Cell)  
[taylordunn@pulverandleever.com](mailto:taylordunn@pulverandleever.com)

Jeremy Leever  
Pulver & Leever  
(541) 554-7828 (Cell)  
[jeremyleever@pulverandleever.com](mailto:jeremyleever@pulverandleever.com)



# Rogue Regency Inn & Suites

Full Service Hotel

Fee-simple interest

Unencumbered by brand or  
management

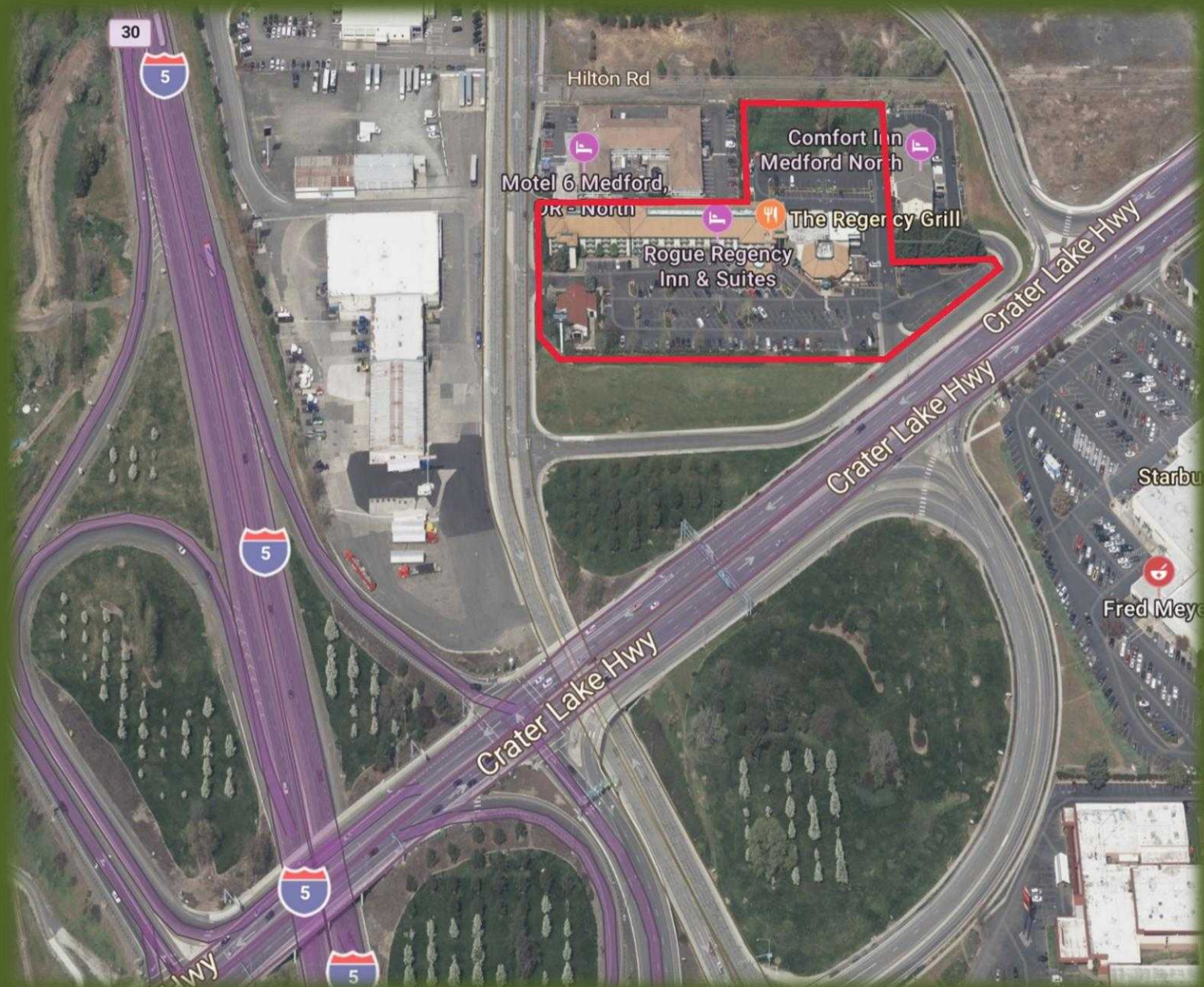
Built in several phases between  
1989 - 2000

Total improved building square  
footage in excess of 117,000 SF

Located on a prime 5+acre site  
at the North Medford  
interchange (I-5 and Hwy 62).  
Prime location with easy access  
and great visibility.

Improvements include a four-  
story hotel with 203 guestrooms  
and suites, restaurant and bar,  
meeting and banquet space,  
indoor pool, spa, and exercise  
room, guest-laundry, local  
shuttle.

Original owner, never before  
offered for sale. Well cared for  
asset showing pride of  
ownership but in need of a  
refresh.



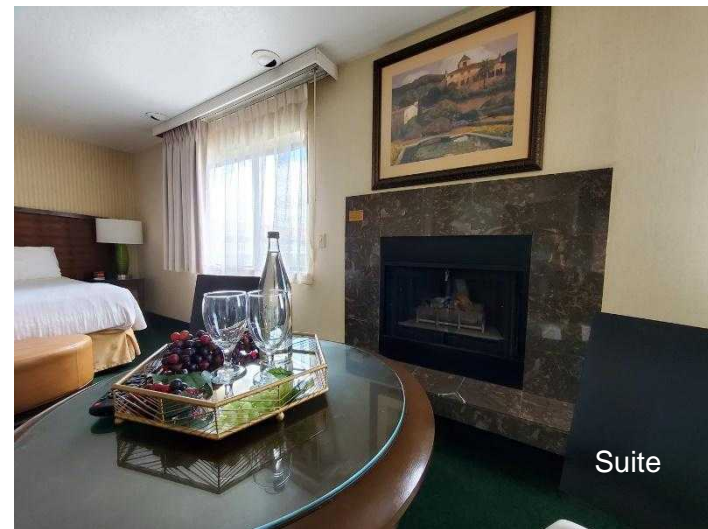


# Rogue Regency Inn & Suites

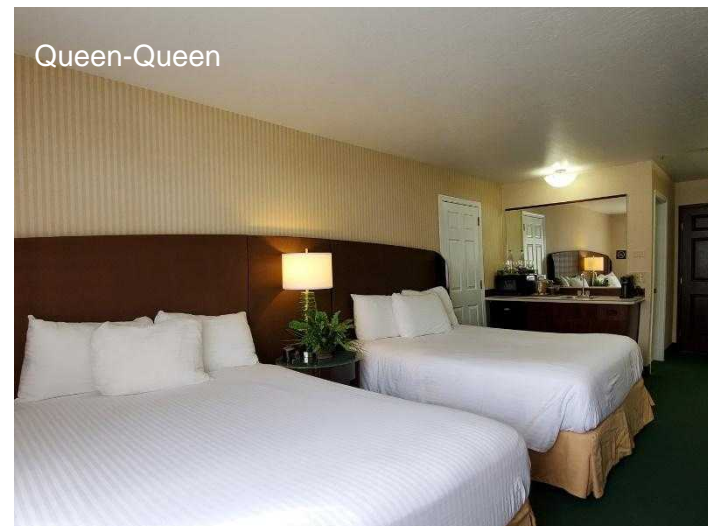
## Additional Photos



King



Suite



Queen-Queen



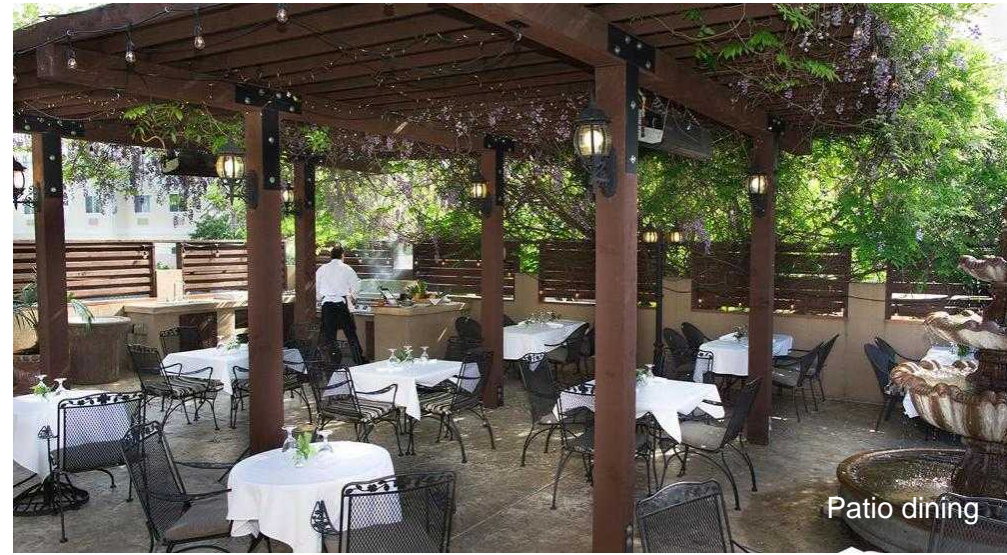
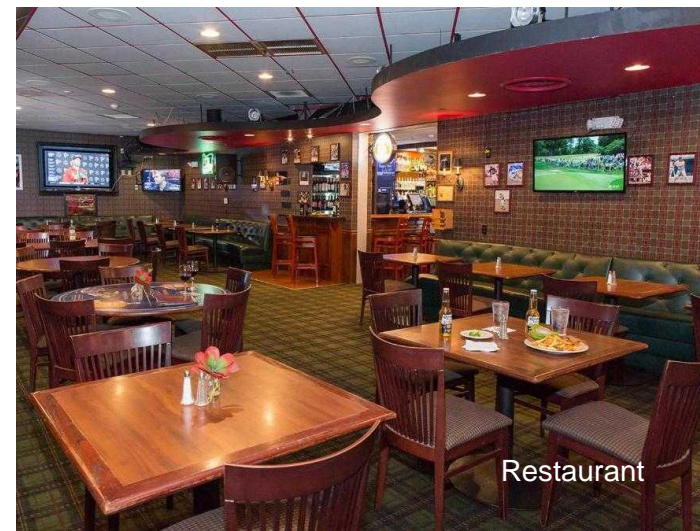
Lobby - Registration





# Rogue Regency Inn & Suites

## Additional Photos





# Rogue Regency Inn & Suites

## Maps & Aerials



**Jeremy Leever**  
Pulver & Leever  
(541) 554-7828 (Cell)  
[jeremyleever@pulverandleever.com](mailto:jeremyleever@pulverandleever.com)

**Taylor Dunn**  
Pulver & Leever  
(541) 2&55-5953 (Cell)  
[taylordunn@pulverandleever.com](mailto:taylordunn@pulverandleever.com)

**Michael J. Mohn**  
Hotel Realty NW  
(206) 409-8274 (Cell)  
[mmohn@hotelrealtynw.com](mailto:mmohn@hotelrealtynw.com)

**Hotel Realty NW**

