



114 WEST HOLLY STREET

114 - 118 W HOLLY STREET | BELLINGHAM, WA 98225

T14-T18 W HOLLY STREET

BELLINGHAM, WA 98225



15.5k SF

TWO FLOORS + MEZZANINE

\$1.495M

SALE PRICE

Iconic 1925 commercial building for sale in the heart of downtown Bellingham. For many years this was home to Sportsman Chalet which was a staple in the community. The building features brick walls, high ceilings, and nearly 70 feet of frontage on Holly Street. This is a perfect owner-user investment opportunity for a retail or office user. 2.5% commission offered to the outside broker.



92k
TOTAL
POPULATION

78k
DAYTIME
POPULATION

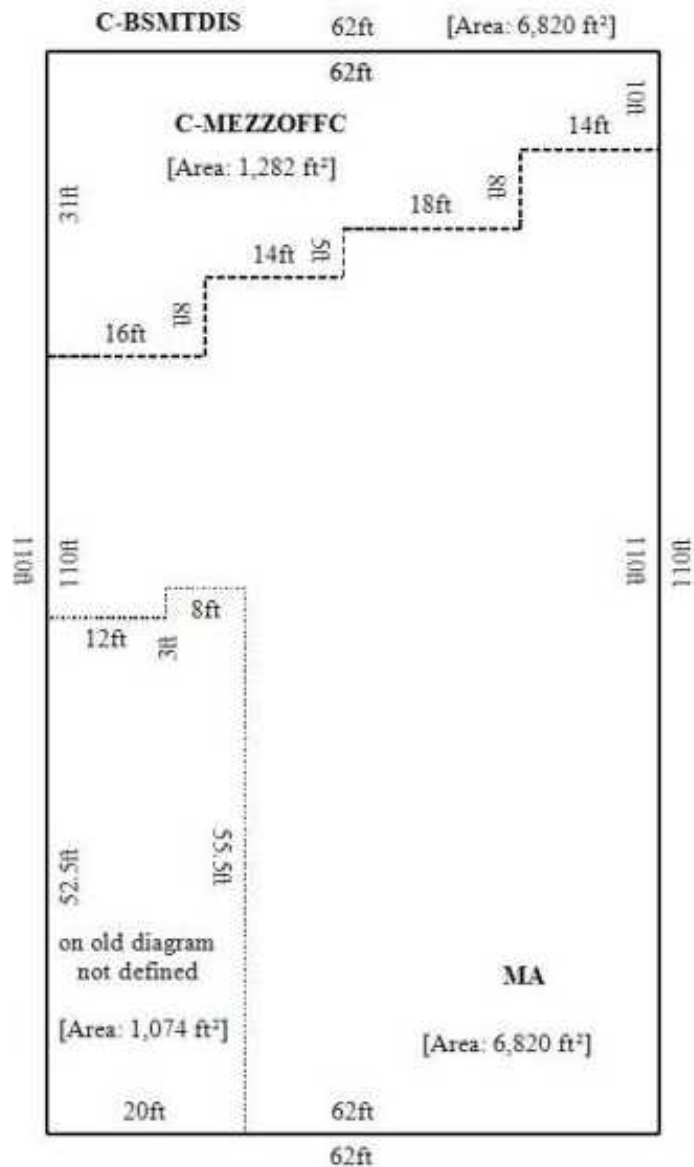
\$104k
AVG. HOUSEHOLD
INCOME

5.9k
BUSINESSES

78%
ADULTS WITH
COLLEGE EDUCATION

48k
EMPLOYEES

*2024 PROJECTIONS FOR BELLINGHAM, WA. COLLECTED VIA SITESUSA



Parcel ID 380330-170147-0000

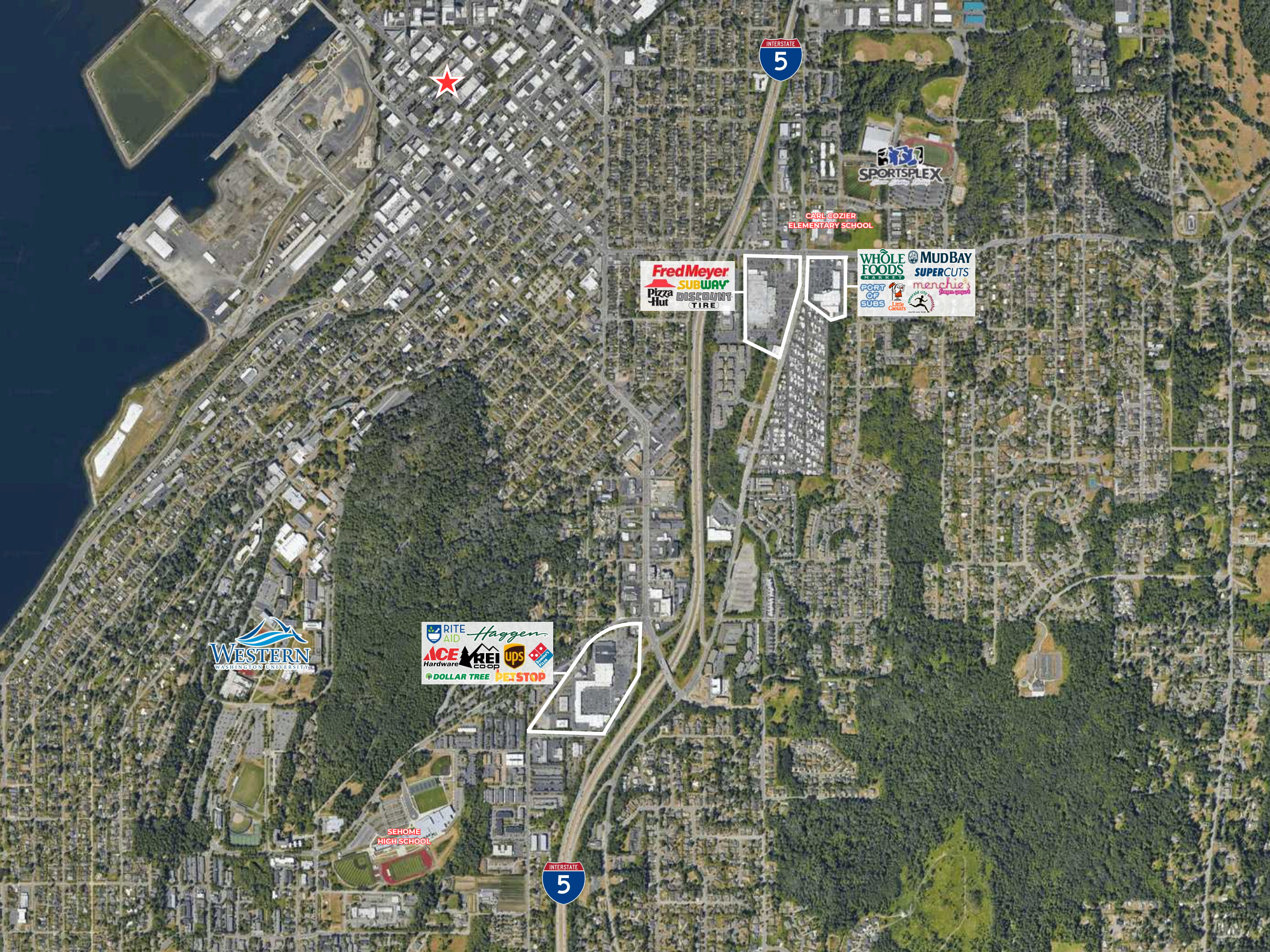
Zoning Commercial - Urban Village

- Details**
- Built in 1925
 - 25ft ceiling height
 - Owner/User or Investment Opportunity
 - 0.17 Acres
 - (Endgame Bar) recently signed a lease extension with ~4.5 years of lease term with \$2,200 in current monthly income
 - Located in the Heart of Downtown Bellingham

UNIT 1 +/-1,500 SF (LEASED ON LONG-TERM LEASE - BAR/LOUNGE)

UNIT 2 +/-14,000 SF (AVAILABLE - 2 FLOORS + MEZZANINE)





CARL GOZIER
ELEMENTARY SCHOOL



SEHOME
HIGH SCHOOL





TYSON CLARKE

SENIOR VICE PRESIDENT | PARTNER
TYSON@PAADVISORS.COM

360.319.4855

GRAYSON JONES

SENIOR ASSOCIATE BROKER
GRAYSON@PAADVISORS.COM

480.862.0362

