

COMMERCIAL LAND FOR SALE

## SOUTH HILL INDUSTRIAL LAND

15424 110TH AVE EAST, PUYALLUP WA



FOR SALE

**KW COMMERCIAL | TACOMA**

7525 28th Street West  
University Place, WA 98466



Each Office Independently Owned and Operated

*PRESENTED BY:*

**MICHAEL ARMANIOUS**

Managing Director  
O: (253) 460-8640  
C: (253) 988-6115  
marmanious@kw.com

We obtained the information above from sources we believe to be reliable. However, we have not verified its accuracy and make no guarantee, warranty or representation about it. It is submitted subject to the possibility of errors, omissions, change of price, rental or other conditions, prior sale, lease or financing, or withdrawal without notice. We include projections, opinions, assumptions or estimates for example only, and they may not represent current or future performance of the property. You and your tax and legal advisors should conduct your own investigation of the property and transaction.

# TABLE OF CONTENTS

15424 110TH AVENUE EAST

**MICHAEL ARMANIOUS**

MANAGING DIRECTOR

O: (253) 460-8640

C: (253) 988-6115

marmanious@kw.com



|                  |   |
|------------------|---|
| Property Photos  | 3 |
| Property Summary | 5 |
| Business Map     | 6 |
| Location Maps    | 7 |
| Disclaimer       | 8 |
| Professional Bio | 9 |

**KW COMMERCIAL | TACOMA**

7525 28th Street West  
University Place, WA 98466



Each Office Independently Owned and Operated



# PROPERTY PHOTOS

15424 110TH AVENUE EAST





# PROPERTY PHOTOS

15424 110TH AVENUE EAST



**Michael Armanious, CCIM**  
Managing Director | Keller Williams Tacoma  
252.364.9611 | [marm@kw.com](mailto:marm@kw.com)  
7025 20<sup>th</sup> St W | University Place | WA 98466  
(252) 364-9611 | (252) 460-0800



**Jaime Richeson**  
Licensed Broker | Keller Williams Tacoma  
252.364.9611 | [jricheson@kw.com](mailto:jricheson@kw.com)  
7025 20<sup>th</sup> St W | University Place | WA 98466  
(252) 364-9611 | (252) 460-0800





# PROPERTY SUMMARY

15424 110TH AVENUE EAST



## Property Summary

|               |                      |
|---------------|----------------------|
| Address1:     | 15424 110th Ave East |
| APN:          | 0419223014           |
| Building SF:  | 1798                 |
| Lot Size:     | 3.69 Acres           |
| Market:       | Puyallup             |
| Sub-market:   | Sunrise              |
| Price / Acre: | 609756               |
| Price:        | \$2,090,000          |
| Year Built:   | 1954                 |
| Zoning:       | EC                   |

## Property Overview

**Rare Opportunity for Acreage in South Hill:** Unique chance to acquire acreage in a sought-after location, offering flexibility for development or expansion.

**Growing Area:** Positioned in a rapidly developing community, presenting significant potential for future growth and appreciation of property value.

**Near Shopping:** Attracts businesses that benefit from proximity to retail centers and consumer traffic.

**Local Fire and Police Services:** Provides a secure environment for business operations and reassurance for employees and customers.

**Easy Access to Hwy 512 and Meridian:** Convenient for logistics and distribution, facilitating smooth transportation of goods and services.

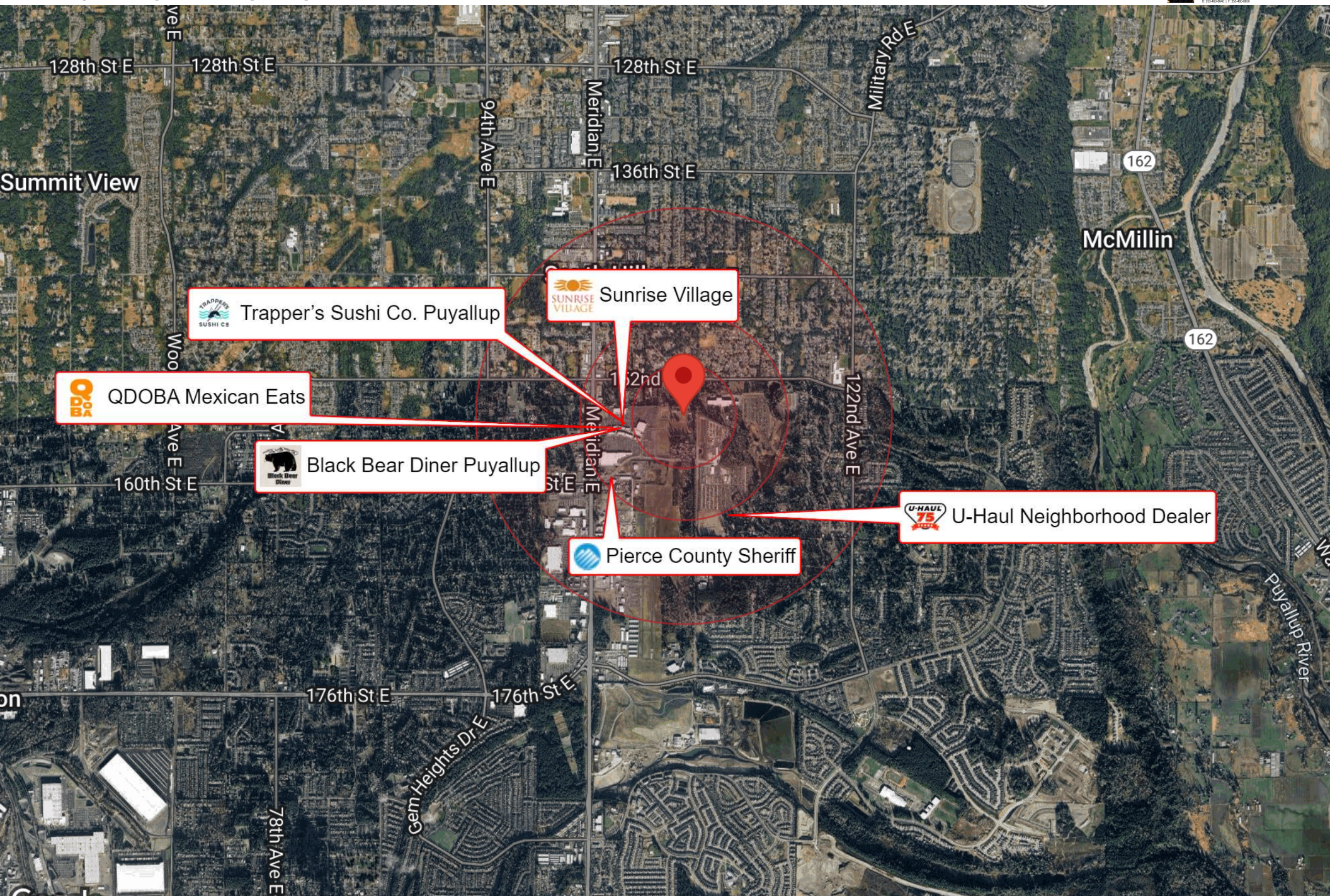
## Location Overview

Located in bustling South Hill Puyallup, this property enjoys a prime position in an ever-growing community. Situated just half a mile from Meridian and the Sunrise Village Shopping Center, it offers convenient access to essential amenities and easy access in a thriving commercial hub.



# BUSINESS MAP

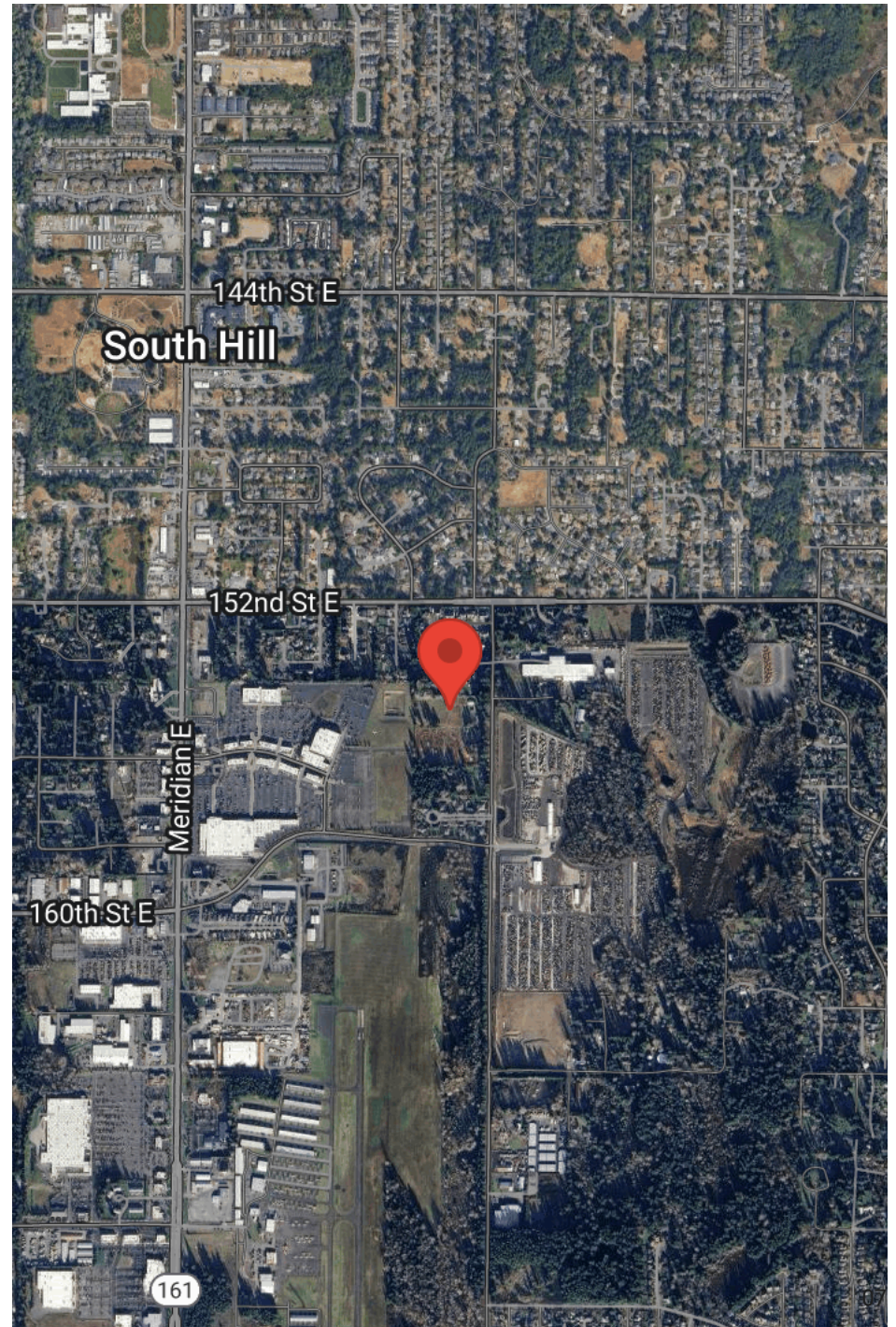
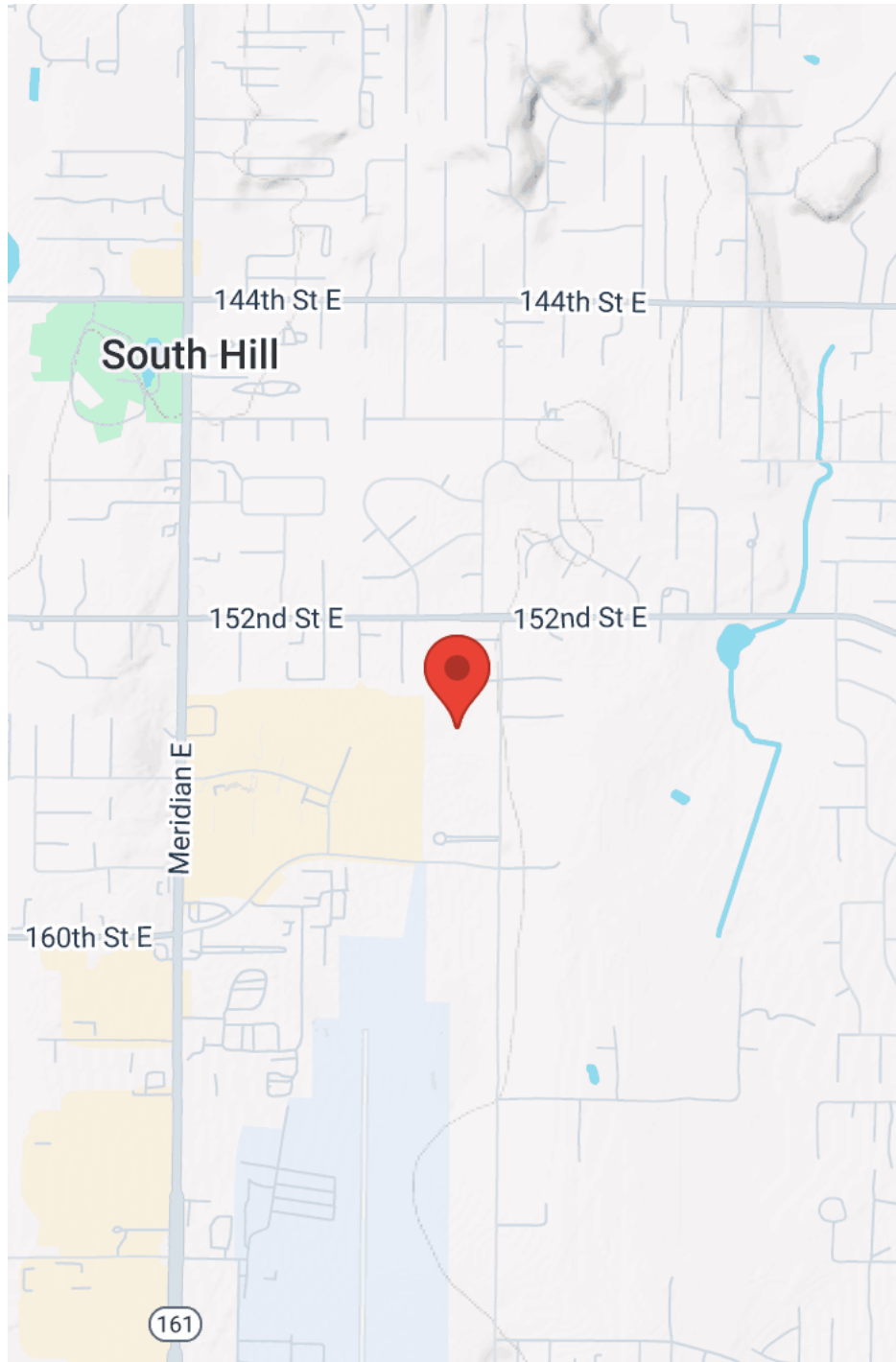
15424 110TH AVENUE EAST





## LOCATION MAPS

15424 110TH AVENUE EAST





# DISCLAIMER

15424 110TH AVENUE EAST



All materials and information received or derived from KW Commercial its directors, officers, agents, advisors, affiliates and/or any third party sources are provided without representation or warranty as to completeness, veracity, or accuracy, condition of the property, compliance or lack of compliance with applicable governmental requirements, developability or suitability, financial performance of the property, projected financial performance of the property for any party's intended use or any and all other matters.

Neither KW Commercial its directors, officers, agents, advisors, or affiliates makes any representation or warranty, express or implied, as to accuracy or completeness of the materials or information provided, derived, or received. Materials and information from any source, whether written or verbal, that may be furnished for review are not a substitute for a party's active conduct of its own due diligence to determine these and other matters of significance to such party. KW Commercial will not investigate or verify any such matters or conduct due diligence for a party unless otherwise agreed in writing.

EACH PARTY SHALL CONDUCT ITS OWN INDEPENDENT INVESTIGATION AND DUE DILIGENCE.

Any party contemplating or under contract or in escrow for a transaction is urged to verify all information and to conduct their own inspections and investigations including through appropriate third-party independent professionals selected by such party. All financial data should be verified by the party including by obtaining and reading applicable documents and reports and consulting appropriate independent professionals. KW Commercial makes no warranties and/or representations regarding the veracity, completeness, or relevance of any financial data or assumptions. KW Commercial does not serve as a financial advisor to any party regarding any proposed transaction.

All data and assumptions regarding financial performance, including that used for financial modeling purposes, may differ from actual data or performance. Any estimates of market rents and/or projected rents that may be provided to a party do not necessarily mean that rents can be established at or increased to that level. Parties must evaluate any applicable contractual and governmental limitations as well as market conditions, vacancy factors and other issues in order to determine rents from or for the property. Legal questions should be discussed by the party with an attorney. Tax questions should be discussed by the party with a certified public accountant or tax attorney. Title questions should be discussed by the party with a title officer or attorney. Questions regarding the condition of the property and whether the property complies with applicable governmental requirements should be discussed by the party with appropriate engineers, architects, contractors, other consultants, and governmental agencies. All properties and services are marketed by KW Commercial in compliance with all applicable fair housing and equal opportunity laws.

## KW COMMERCIAL | TACOMA

7525 28th Street West  
University Place, WA 98466



Each Office Independently Owned and Operated

## PRESENTED BY:

### MICHAEL ARMANIOUS

Managing Director  
O: (253) 460-8640  
C: (253) 988-6115  
marmanious@kw.com

The calculations and data presented are deemed to be accurate, but not guaranteed. They are intended for the purpose of illustrative projections and analysis. The information provided is not intended to replace or serve as substitute for any legal, accounting, investment, real estate, tax or other professional advice, consultation or service. The user of this software should consult with a professional in the respective legal, accounting, tax or other professional area before making any decisions.



## PROFESSIONAL BIO

15424 110TH AVENUE EAST

### MICHAEL ARMANIOUS Managing Director



KW Commercial | Tacoma  
7525 28th Street West  
University Place, WA 98466  
O: (253) 460-8640  
C: (253) 988-6115  
marmanious@kw.com

Michael Armanious, CCIM, joined Keller Williams Commercial in 2009 as a Managing Director. As a continual top producer in his field, Mike has been recognized for his work on numerous occasions, including being a perennial top producer within Keller Williams Commercial. He has also been honored as one of the market's top deal makers for several years in a row. He has most recently been honored by being nominated by the Commercial Leadership Council (CLC) as a top producer within Keller Williams Commercial – a global distinction. Over the course of his career, Mike has been retained by many of the clients he started out with decades ago and has represented repeat investors and property owners for multiple investments and leasing assignments. In addition, he has represented numerous clients in more complex real estate transaction negotiations.

As an investment sales broker, Mike has negotiated over 350 successful sales and leasing transactions throughout Washington State; including industrial building properties in the South King County/Pierce County areas, as well, including the sale of a 7-acre, 3-parcel, 90,000 + sq. foot retail anchored center in Gig Harbor; the sale of a 34,000 sq. foot retail building in Federal Way; the sale of a 14,000 sq. foot retail center in Puyallup; the sale of a 16,000 sq. foot office complex in Lakewood; as well as the sale of a 6,500 sq. foot industrial building in Seattle. Mike has also been involved in a myriad of multifamily transactions over his career. He also has experience on the development side, acquiring land and seeing it through the engineering process. As a member of several Limited Liability Companies, he has overseen the engineering, development, and marketing of multiple commercial pieces of land and the rehabbing of many multi-family units in Tacoma as well.

For Mike, one of the highlights of his position as an investment specialist is advocating for his clients. He views himself more as a consultant than a broker, supplies candid advice to his clients, and appreciates that a handshake is a bond – it represents a mutual trust between himself, his team, and his clients; something that seems to be lacking in the commercial real estate industry. With an inherent desire to continually improve, Mike understands the importance of being a certified expert in his field and goes well beyond normal protocol to gain industry insight that he can leverage when devising creative solutions for his clients. Another key to Mike's success is – and always has been – his deeply ingrained determination to take ownership over his actions and to lead by example. A former film producer in Hollywood, Mike learned to value these qualities when he became a producer before age 30. He also credits his father with instilling in him exacting standards and integrity and genuinely believes in what his father taught him, "When you tell the truth, you don't need to remember what you said – you always say the same thing." Appraisers, lenders, and attorneys have consulted and relied on his expertise in these areas when verifying comparable market information.

Mike is also a licensed real estate broker in California and serves on the Washington State CCIM Chapter Board and was the past President of the Washington State CCIM Chapter. He also served as the Regional Vice President for Region 1 (Alaska, Idaho, Oregon, Washington & Montana) for the CCIM Institute. He has completed the JW Levine Leadership Development Academy and serves as a member of the National Board of Directors for CCIM. He graduated from the University of Washington with a Master of Science in Real Estate focusing on Finance/Investment and Commercial Real Estate Development and he also holds a Bachelor of Arts in Political Science; also, from The University of Washington in Seattle. He currently resides in Puyallup with his wife and children, and in his free time he enjoys watersports, snowboarding, and yoga. He used to manage a rock 'n' roll band and has been to over 400 concerts.



Michael Armanious, CCIM  
Managing Director | Keller Williams Tacoma  
O: (253) 460-8640 | marmanious@kw.com  
7525 28th St W University Place WA 98466  
C: (253) 988-6115 | F: (253) 460-8640



Jaime Richeson  
Licensed Broker | Keller Williams Tacoma  
O: (253) 460-8640 | jricheson@kw.com  
7525 28th St W University Place WA 98466  
C: (253) 460-8640 | F: (253) 460-8640