

SUBJECT
PROPERTY

144TH AVE NE

FOR SALE

WOOD-VIEW AVALON BUILDING

±16,965 SF
AVAILABLE

±1,350 SF
OFFICE

RARE, CLEAR-SPAN CONCRETE TILT-UP

Easily accessible

Clear height of 18' - 20'

Three grade-level doors; one with loading dock

Sprinklered for fire protection

3-phase power, 800 amps

Built in 1988

Zoned Industrial (I) (City of Woodinville)

Covered open area is a perfect compliment to participate in Woodinville's popular wine industry

6 MIN

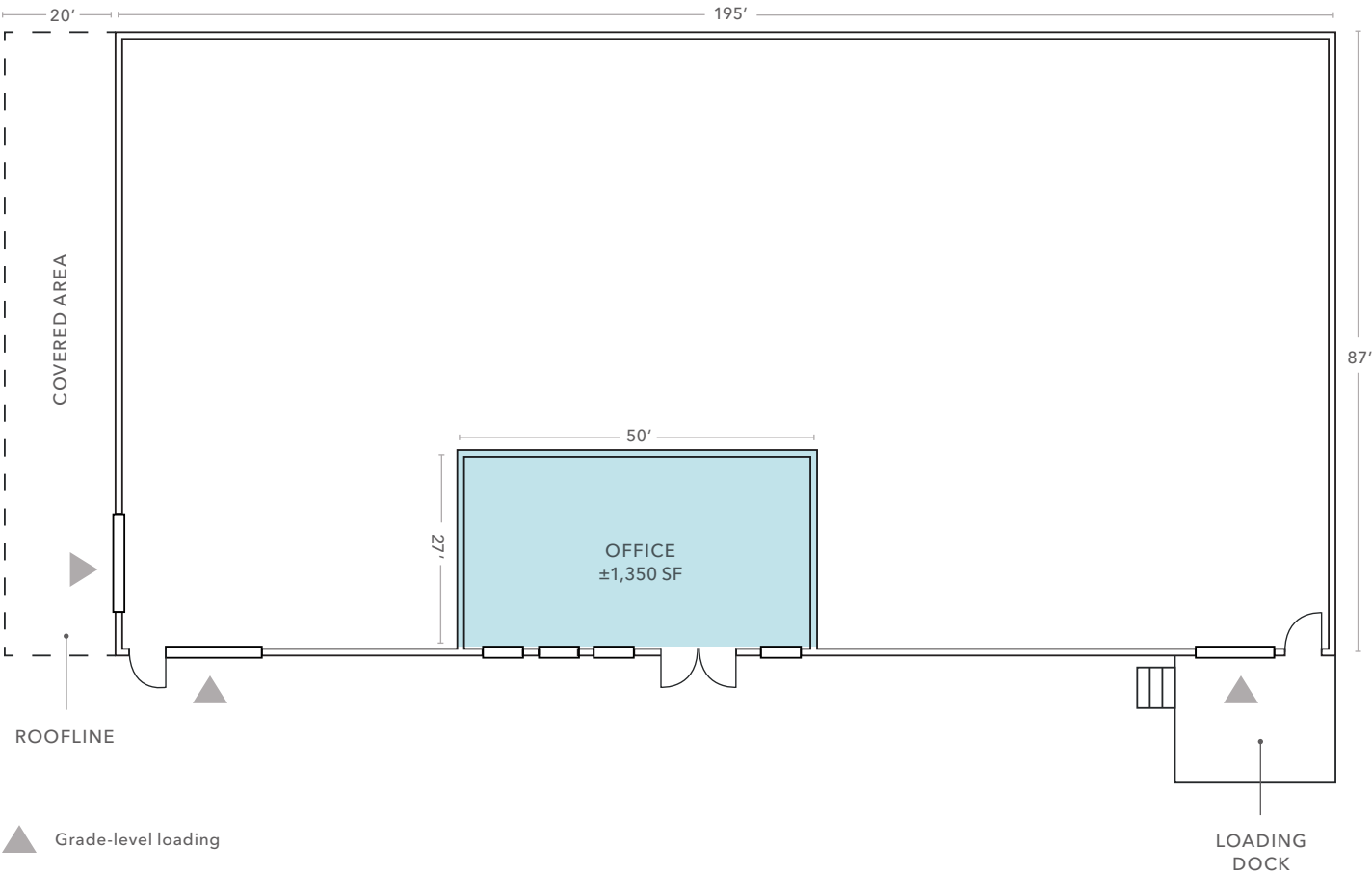
DRIVE TO
WOODINVILLE

3 MIN

DRIVE TO
WA-522



FLOOR PLAN



±16,965 SF

AVAILABLE

±1,350 SF

OFFICE

39,640 SF

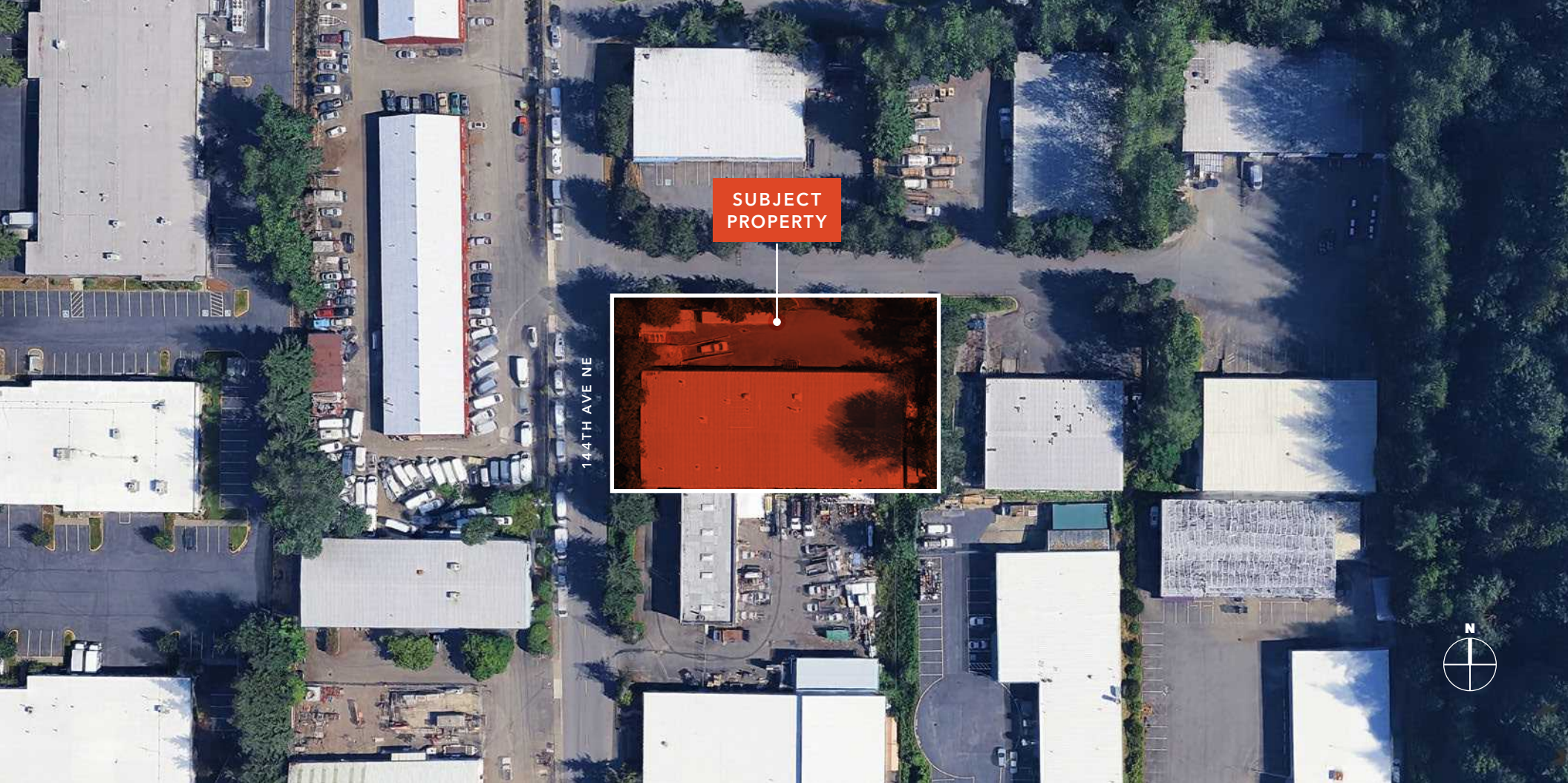
LOT SIZE

04/1/2026

AVAILABLE FOR OCCUPANCY

\$5.2M

ASKING PRICE



WOOD-VIEW AVALON BUILDING

*For more information on
this property, please contact*

ROGER THORN
425.450.1120
206.999.2023
roger.thorn@kidder.com

[KIDDER.COM](https://www.kidder.com)

This information supplied herein is from sources we deem reliable. It is provided without any representation, warranty, or guarantee, expressed or implied as to its accuracy. Prospective Buyer or Tenant should conduct an independent investigation and verification of all matters deemed to be material, including, but not limited to, statements of income and expenses. Consult your attorney, accountant, or other professional advisor. All Kidder Mathews designs are the sole property of Kidder Mathews. Branded materials and layouts are not authorized for use by any other firm or person.

