

SNOHOMISH CONSTRUCTION YARD

FOR SALE: 1.34 AC

9614 LOWELL-SNOHOMISH RIVER RD | SNOHOMISH, WA

MOVE-IN READY YARD WITH OFFICE AND GARAGE SPACE



SALE DETAILS

Total Size:	1.34 Acres
Sale Price:	\$1,170,000
Improvements:	1,860 SF office (converted former residence) with a 600 SF garage/shop underneath

PROPERTY INFORMATION

- Fully fenced site
- Currently an operating construction contractor yard
- Site is on septic
- Portion of yard is raised above flood level
- LI zoning - Snohomish County



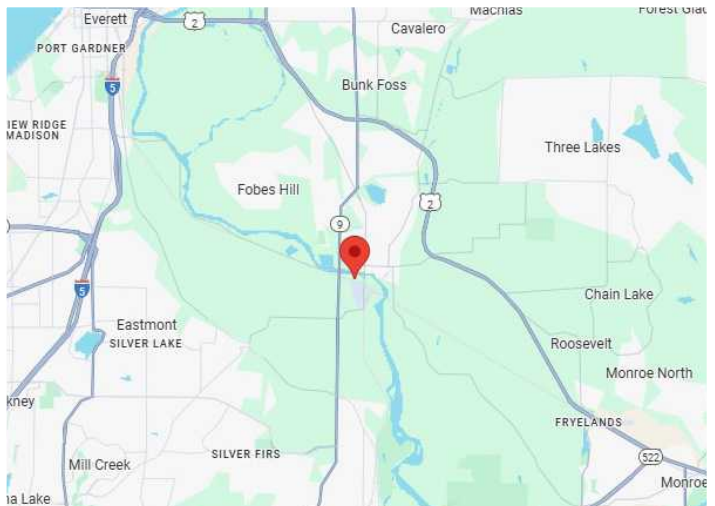
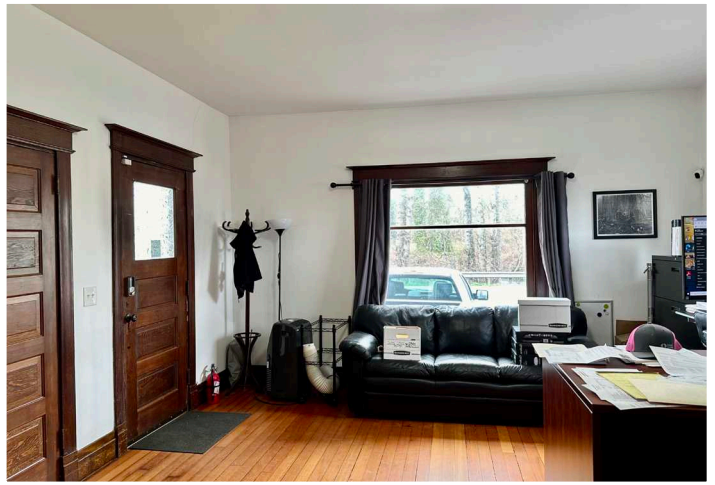
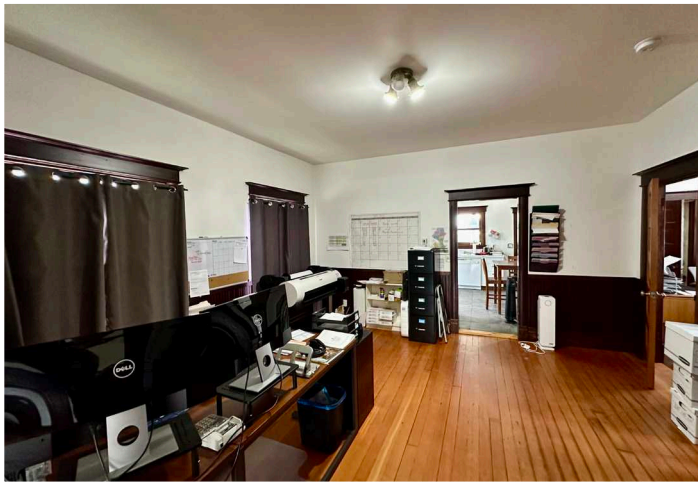
FLETCHER FARRAR
206.787.1469
ffarrar@neilwalter.com

BEN DAVIDSON
206.787.1470
bdavidson@neilwalter.com

All information references in this document are approximate. The information contained herein is contained from sources deemed reliable. It is provided without representation, warranty, or guarantee, expressed or implied as to accuracy. Prospective buyer or tenant should conduct its own independent investigation relating to the property, government codes and regulations, allowed uses, and all other matters, regardless of whether they are referred to or contained in this document.

SNOHOMISH CONSTRUCTION YARD

9614 LOWELL-SNOHOMISH RIVER RD | SNOHOMISH, WA



FLETCHER FARRAR
206.787.1469
ffarrar@neilwalter.com

BEN DAVIDSON
206.787.1470
bdavidson@neilwalter.com

550 S Michigan St
Seattle, WA 98108
206.787.1800
www.neilwalter.com

All information references in this document are approximate. The information contained herein is contained from sources deemed reliable. It is provided without representation, warranty, or guarantee, expressed or implied as to accuracy. Prospective buyer or tenant should conduct its own independent investigation relating to the property, government codes and regulations, allowed uses, and all other matters, regardless of whether they are referred to or contained in this document.