



Trusted Since 1979!

Dave Hilbert

Designated Broker



425-280-6542



Dave@Re2000Homes.com



www.RealEstate2000Corp.com

Linked in 



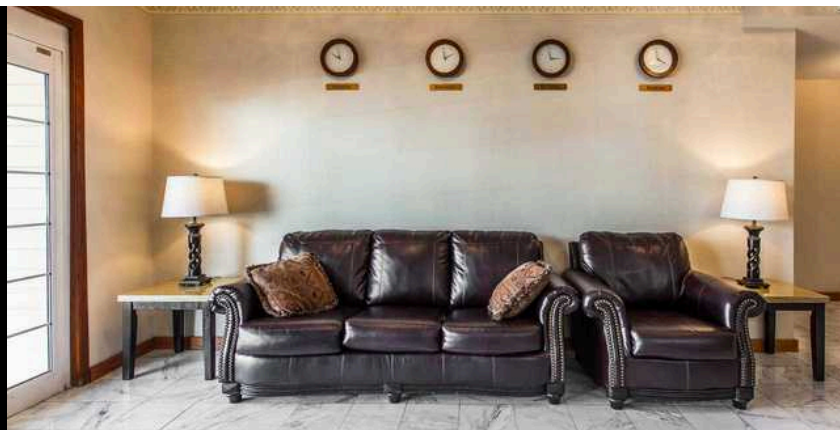
Proforma Financials

2024: Gross Income: \$966,842 | Net Income: \$576,947 | CAP Rate: 8.9%
2023: Gross Income: \$1,041,944 | Net Income: \$550,816 | CAP Rate: 8.5%
2022: Gross Income: \$1,150,279 | Net Income: \$577,466 | CAP Rate: 8.8%
2021: Gross Income: \$1,075,674 | Net Income: \$536,002 | CAP Rate: 8.2%

Discover The Exceptional 71-Room Bellis Inn Hotel, A Prime Investment Opportunity In Beautiful Bellingham, Washington, Now On The Market For \$6,499,000! This Property, Offered By A Retiring Operator, Stands Out As A Higher-Quality Property Compared To Notable Brands Such As Red Lion, Best Western And Other Comparable Flags.



Contact:
Dave Hilbert
Designated Broker
425-280-6542



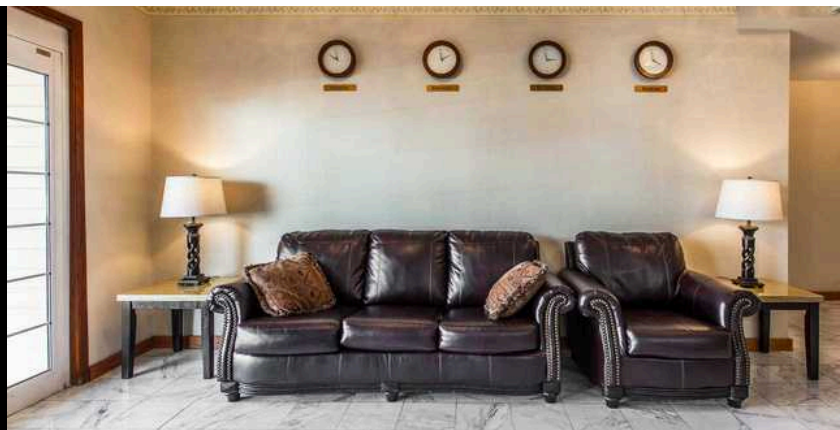
The Bellis Inn Features 36 Single Rooms, 32 Double Rooms, And 3 Handicap-Accessible Rooms, For Added Potential, The Property Includes A Currently Inactive Spa Room With A Shower And Jacuzzi, Ready To Be Revitalized For Guest Enjoyment.

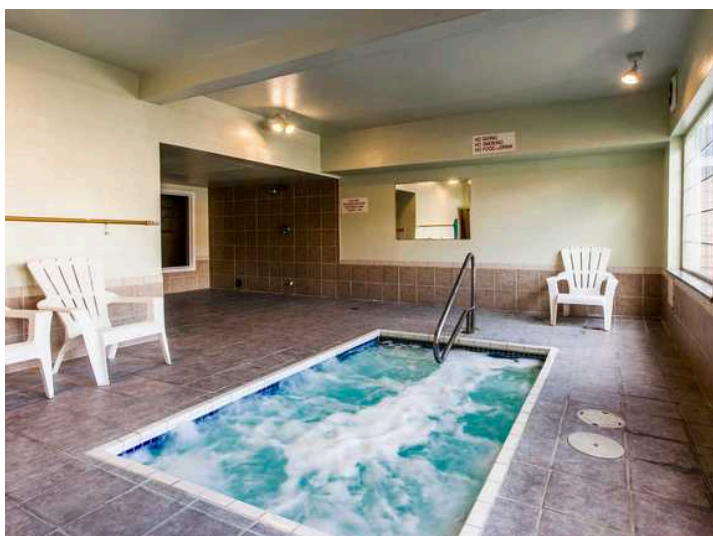
Recent Renovations In 2023/2024, Totaling An Estimated \$390,000, Have Elevated The Quality Of Every Room, Ensuring A Fresh And Modern Stay For Visitors. With Interior Corridors And A Convenient 3-Story Layout Serviced By An Elevator, This Property Provides Accessibility And Comfort For All. Guests Can Enjoy A Continental Breakfast Daily From 6:00 AM To 9:30 AM In A Cozy 24-Seat Meeting Room.

Winter Rates Are Competitively Priced At \$80 For Single Rooms And \$95 For Doubles, With Seasonal Increases Of 10% In Spring And 30% In Summer, Maximizing Profitability. The Property Also Boasts 75 Parking Spaces, A 16-Camera Security System, And A Prime Location Close To The Airport, Canadian Border, And Local Colleges, Making It An Ideal Choice For Business And Leisure Travelers Alike.



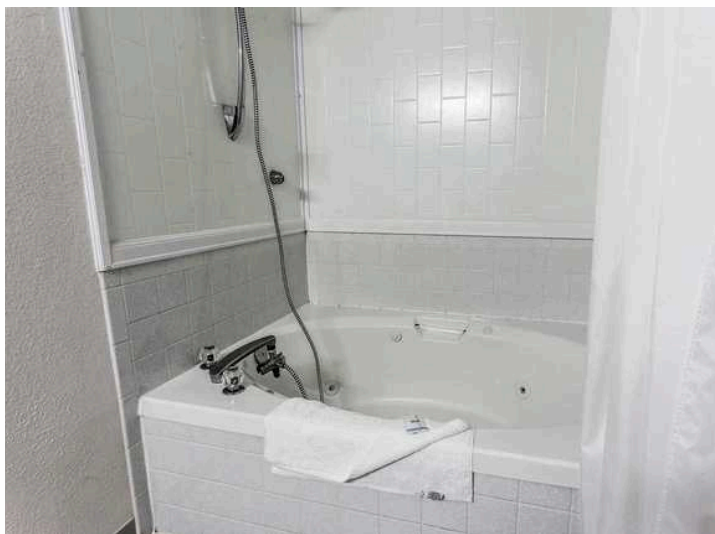
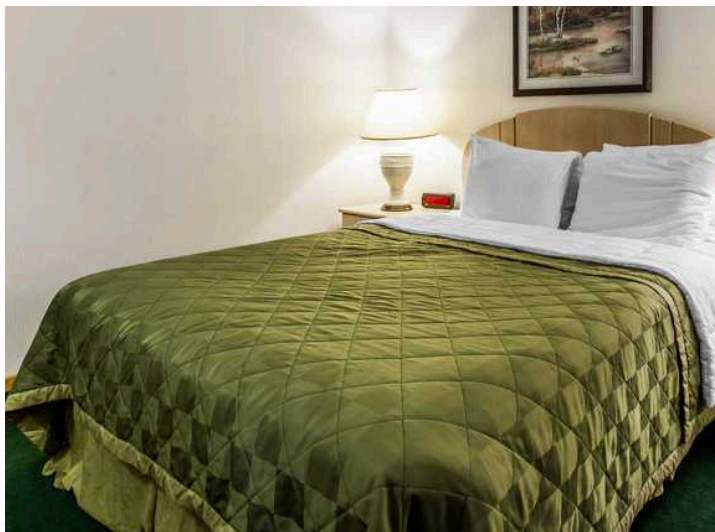
Contact:
Dave Hilbert
Designated Broker
425-280-6542





Contact:
Dave Hilbert
Designated Broker
425-280-6542





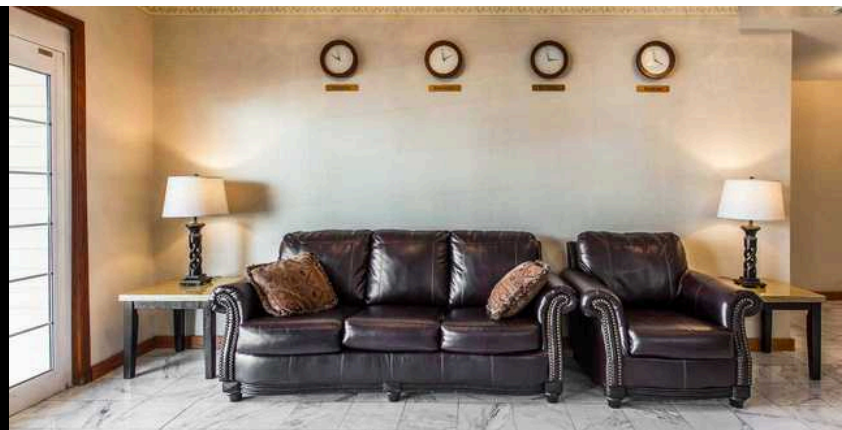
Contact:
Dave Hilbert
Designated Broker
425-280-6542



Bellis Inn - 2024 Proforma Profit & Loss	
Gross Income:	\$966,841.99
Expenses:	
Goodwill Amortization Expense:	\$444.44
Non-Compete Amortization Exp:	\$1,777.76
Commission Expenses:	\$16,120.07
Computer and Internet Expense:	\$16,187.59
Credit Card Processing Fees:	\$12,010.00
Insurance Expense:	\$19,665.49
Licenses and Permits:	\$3,139.32
Motel Supplies:	\$16,553.32
Office Expenses:	\$46.20
Parking Fees and Tolls:	\$54.75
Federal Unemployment:	\$411.55
Labor & Industires Company:	\$3,034.08
Medicare Company:	\$3,861.38
Social Security Company:	\$16,510.68
WA - Employment Admin. Fund:	\$58.28
WA- Unemployment Company:	\$1,456.91
Payroll Expenses:	\$194,301.48
Professional Fees - Accounting:	\$4,670.00
Repairs & Maintenance Expenses:	\$23,280.72
Security Expense:	\$1,847.51
Taxes - City B&O Tax:	\$1,254.42
Taxes - State B&O Tax:	\$3,049.96
Telephone:	\$4,039.76
Utilities:	\$46,119.32
Total Expenses:	\$389,894.99
Net Ordinary Income:	\$576,947.00
CAP Rate:	8.9%



Contact:
Dave Hilbert
 Designated Broker
 425-280-6542



Bellis Inn - 2023 Proforma Profit & Loss

Gross Income:	\$1,041,944.00
Expenses:	
Salaries & Wages:	\$190,346.00
Repairs & Maintenance:	\$28,895.00
Taxes & Licenses:	\$64,944.00
Other Deductions:	\$206,943.00
Total Expenses:	\$491,128.00
Net Ordinary Income:	\$550,816.00
CAP Rate:	8.5%

Bellis Inn - 2022 Proforma Profit & Loss

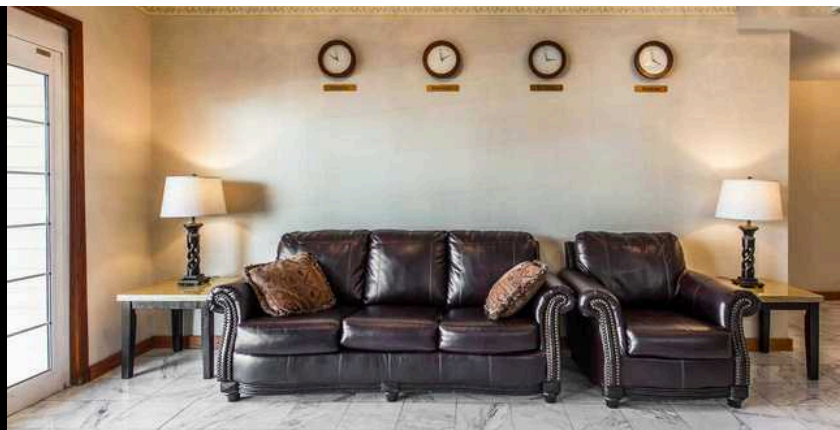
Gross Income:	\$1,150,279.00
Expenses:	
Salaries & Wages:	\$166,890.00
Repairs & Maintenance:	\$47,005.00
Taxes & Licenses:	\$32,213.00
Other Deductions:	\$331,358.00
Total Expenses:	\$577,466.00
Net Ordinary Income:	\$572,813.00
CAP Rate:	8.8%

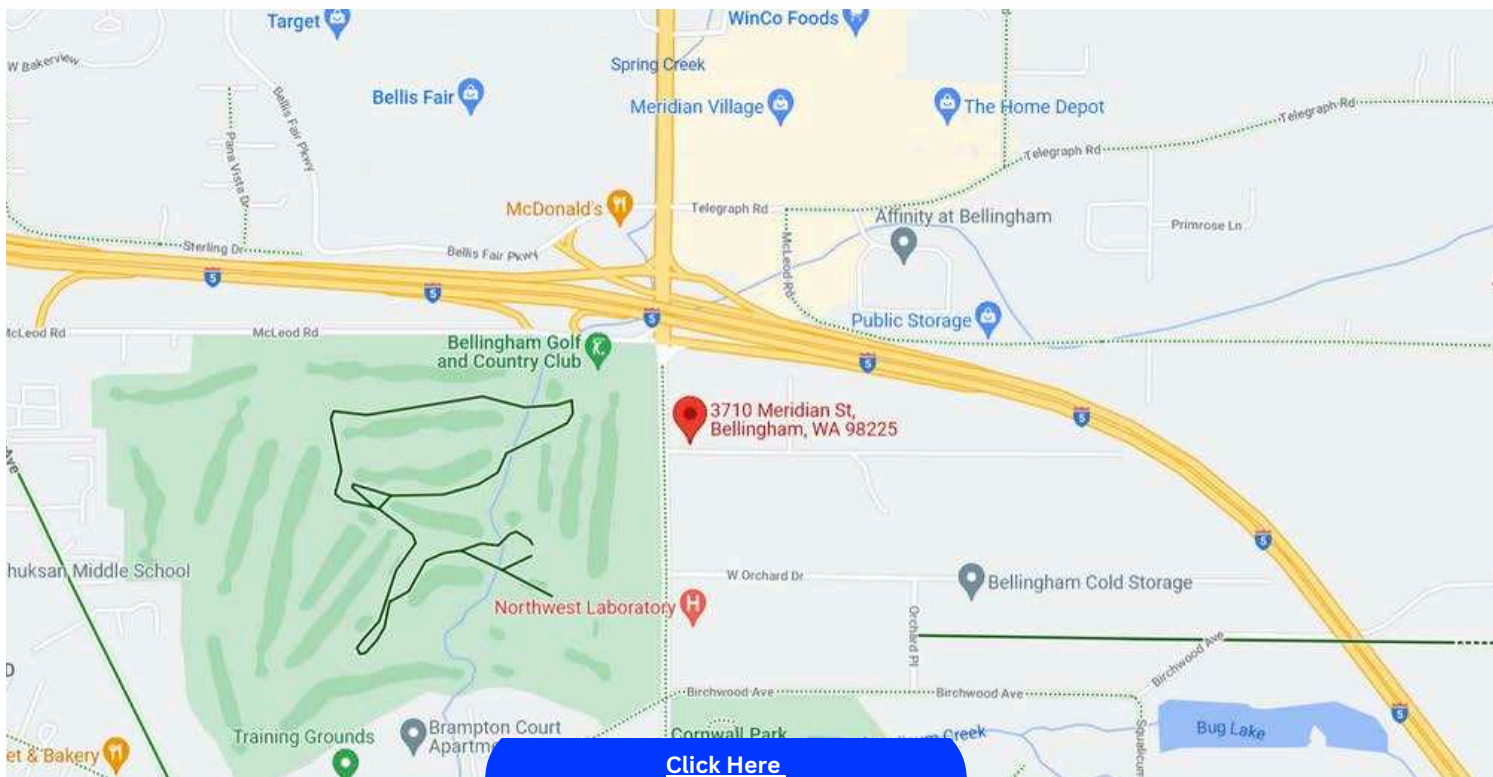
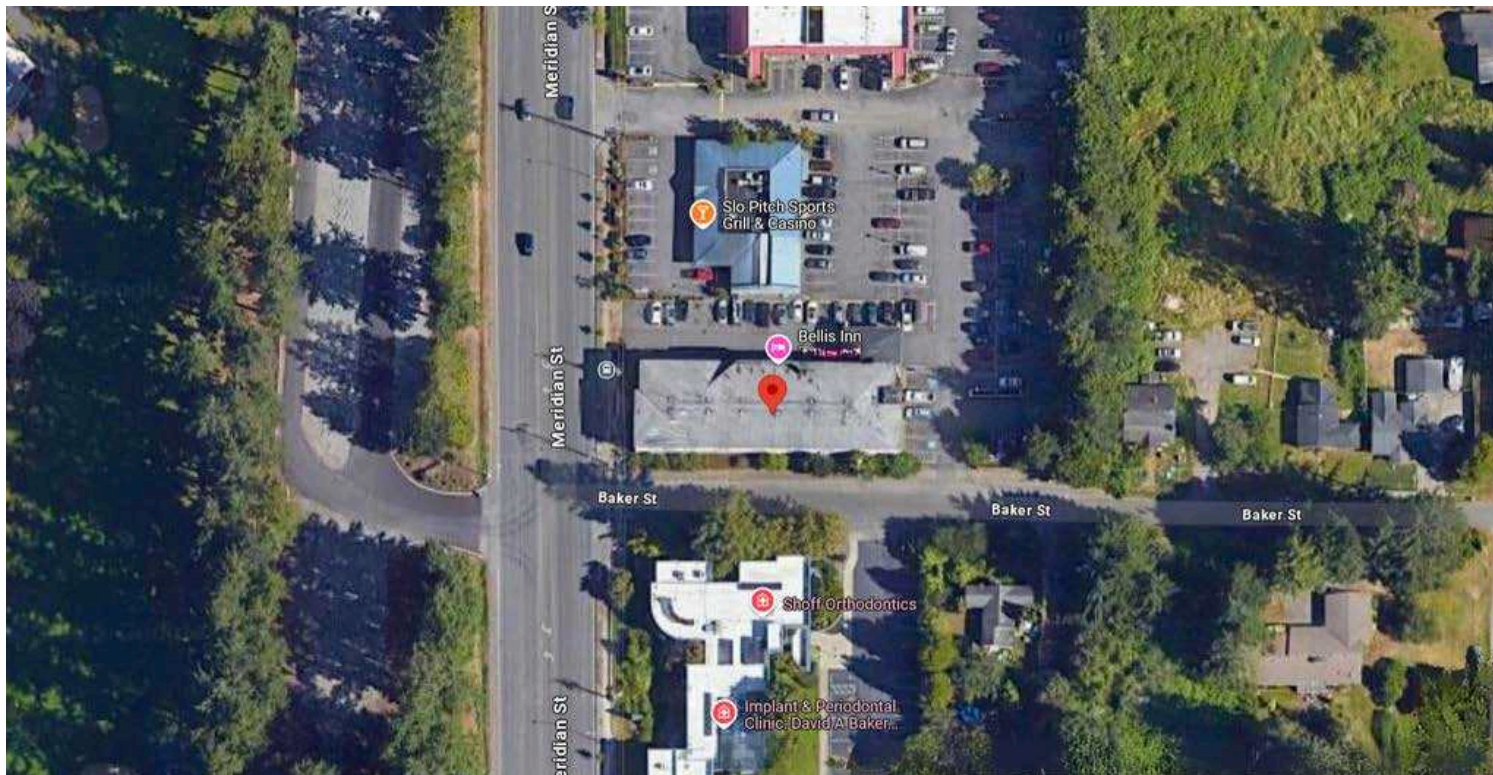
Bellis Inn - 2021 Proforma Profit & Loss

Gross Income:	\$1,075,674.00
Expenses:	
Salaries & Wages:	\$126,706.00
Repairs & Maintenance:	\$40,358.00
Taxes & Licenses:	\$77,328.00
Other Deductions:	\$295,280.00
Total Expenses:	\$539,672.00
Net Ordinary Income:	\$536,002.00
CAP Rate:	8.2%



Contact:
Dave Hilbert
 Designated Broker
 425-280-6542

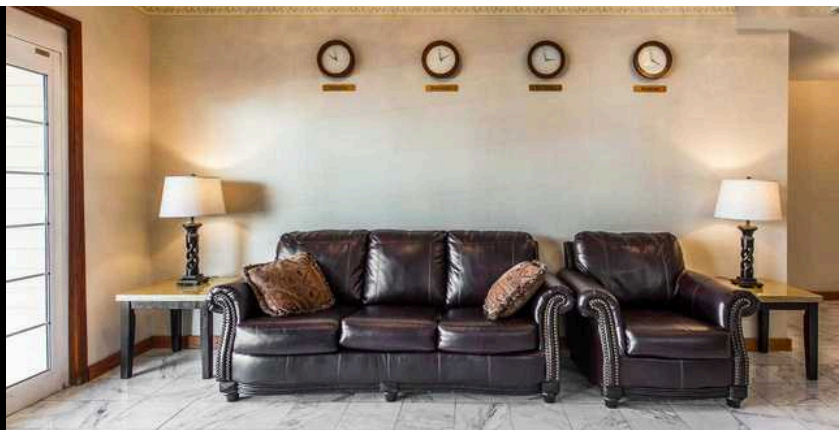


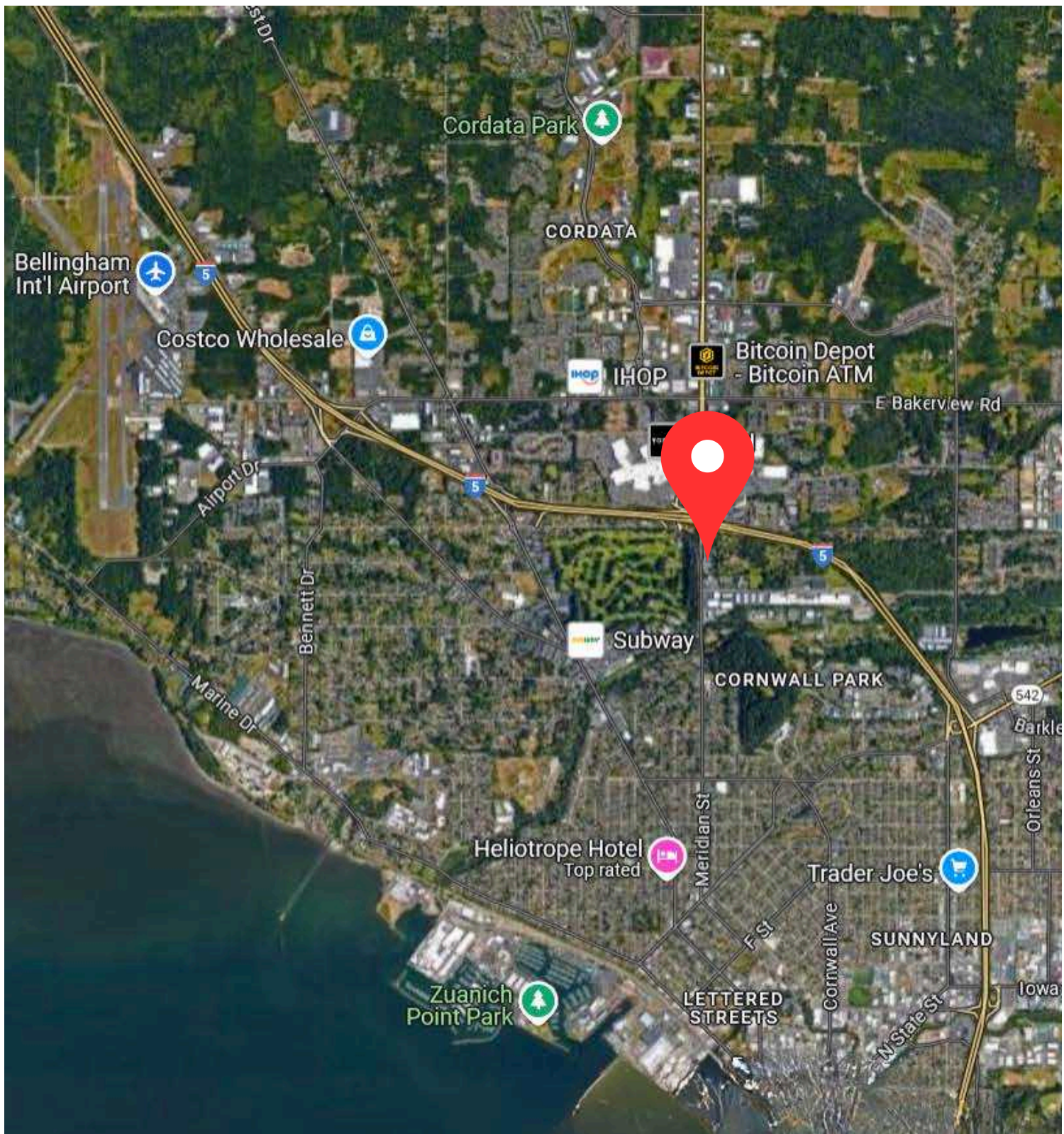


[Click Here](#)
For Google Directions

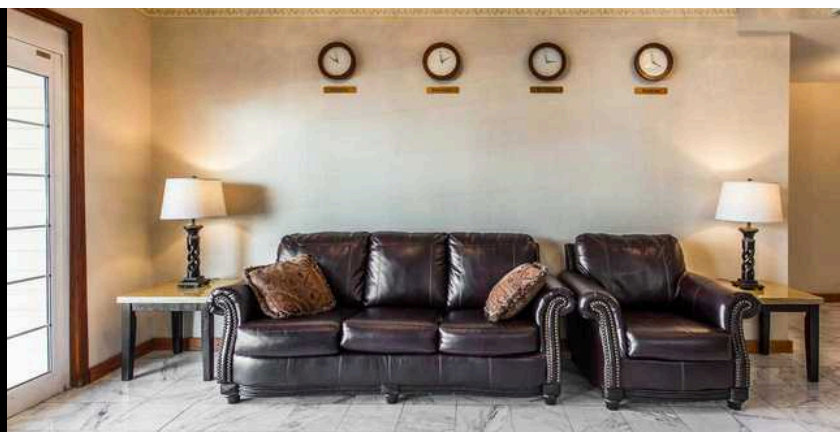


Contact:
Dave Hilbert
Designated Broker
425-280-6542





Contact:
Dave Hilbert
Designated Broker
425-280-6542





Bellingham, Washington

Bellingham (/ˈbɛlɪŋhæm/ *BEL-ing-ham*) is the county seat of Whatcom County in the U.S. state of Washington.^[9] It lies 21 miles (34 km) south of the U.S.–Canada border, between Vancouver, British Columbia, 52 miles (84 km) to the northwest and Seattle 90 miles (140 km) to the south.

The population was 91,482 at the 2020 census,^[5] and estimated to be 94,720 in 2023.^[6] It is the site of Western Washington University, Bellingham International Airport, and the southern terminus of the Alaska Marine Highway. Bellingham is the northernmost city with a population of more than 90,000 people in the contiguous United States.^[10]

The area around Bellingham Bay, named in 1792 by George Vancouver, is the ancestral home of several Coast Salish groups. European settlement in modern-day Bellingham began in the 1850s and several coal mining towns grew in later years. The city of Bellingham was incorporated in 1903 through the consolidation of several settlements, among them Fairhaven. Local industries shifted away from coal in the mid-20th century; the industrial areas on the Bellingham waterfront have undergone redevelopment into a mixed-use neighborhood since the 2000s.

History

Bellingham has been inhabited by Indigenous peoples for millennia. The city of Bellingham and its surrounding area is the intersection of the territories of many Coast Salishan peoples. The Lummi, Nooksack, Samish, and Nuwaha in particular fished in Bellingham Bay and shared the hunting and gathering grounds in the nearby forests and prairies.^[11] Indigenous people continue to live in and around Bellingham, particularly the Lummi, who have a reservation directly west of the city.

The modern city of Bellingham, incorporated in 1903, consolidated four settlements: Bellingham, Whatcom, Fairhaven, and Sehome. It takes its name from Bellingham Bay, named by George Vancouver in 1792, for Sir William Bellingham.

The first European immigrants reached the area about 1852 when Henry Roeder and Russel Peabody set up a lumber mill at Whatcom, now the northern part of Bellingham. Lumber cutting and milling continues to the present in Whatcom county. At about the same time, Dan Harris arrived, claiming a homestead along Padden Creek, and after acquiring

Bellingham, Washington

City



Aerial view of Bellingham



Flag



Seal

Nickname: City of Subdued Excitement (unofficial)^[2]



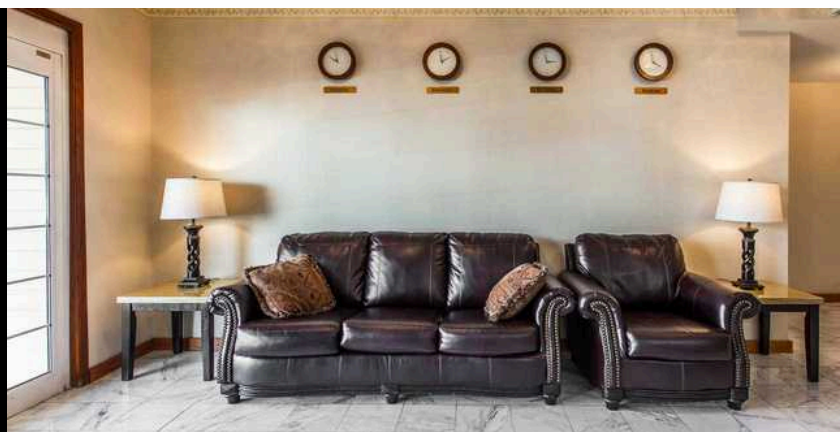
Location in Whatcom County and the state of Washington

Coordinates: 48°45′N 122°29′W

Country	United States
State	Washington
County	Whatcom
Incorporated	December 28, 1903
Named for	Sir William Bellingham, 1st Baronet
Government	
 • Type	Mayor–council
 • Mayor	Kim Lund ^[2]
Area ^[3]	
 • City	30.511 sq mi (79.023 km ²)



Contact:
Dave Hilbert
Designated Broker
425-280-6542



**Scan For
Virtual
Tour**



**Scan
For
All Sold
Listings**



**Scan To
Visit Us
On
Facebook!**



**Scan To
Visit Us
On
Linkedin!**



[CLICK HERE FOR
VIRTUAL TOUR](#)

[CLICK HERE TO
SEE SOLD LISTINGS](#)

[CLICK HERE TO VISIT
US ON FACEBOOK](#)

[CLICK HERE TO VISIT
US ON LINKEDIN](#)



Follow Us On Facebook!
Real Estate 2000 Corp
Dave Hilbert



**Come Check Out Our
Website!**

[CLICK HERE TO VISIT
OUR WEBSITE!](#)



Contact:
Dave Hilbert
Designated Broker
425-280-6542

