

CLASS A OFFICE CONDO

325 E. George Hopper Rd, Suite 107, Burlington WA



- 1,132 SF Available
- Ground Floor space in Professional Office Park
- Lots of Natural Light
- Excellent Parking

\$429,000

FOR SALE

GREG MARTINEAU
GAGE COMMERCIAL REAL
ESTATE, LLC.

360.483.0508

GREG@GAGECRE.COM

TRACY CARPENTER
GAGE COMMERCIAL REAL
ESTATE, LLC.

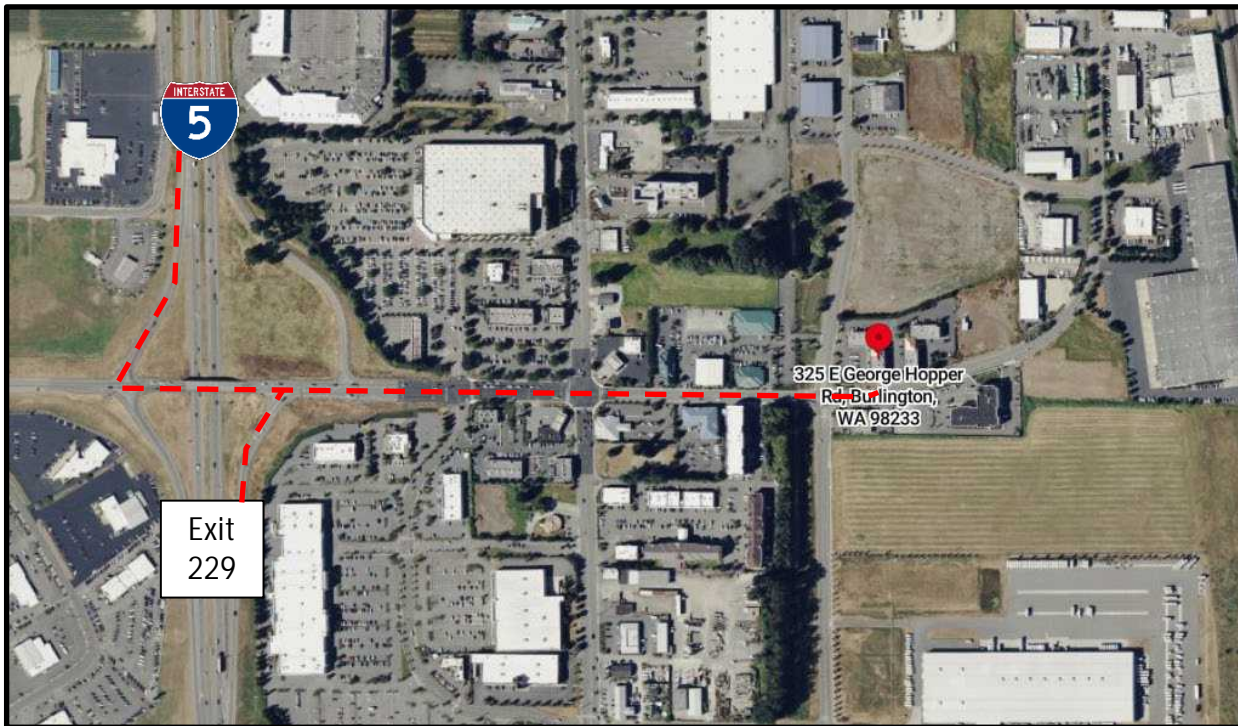
360.303.2608

TRACY@GAGECRE.COM

PROPERTY SUMMARY

Turn-key professional Class A office space located at the prestigious Advantage Business Park. Easily accessible from I-5 via exit 229.

Ground floor end-cap office space with great visibility to George Hopper Rd. Lots of natural light. Common ADA restrooms are included in the lobby. Excellent parking with 65 shared spaces.



PROPERTY OVERVIEW

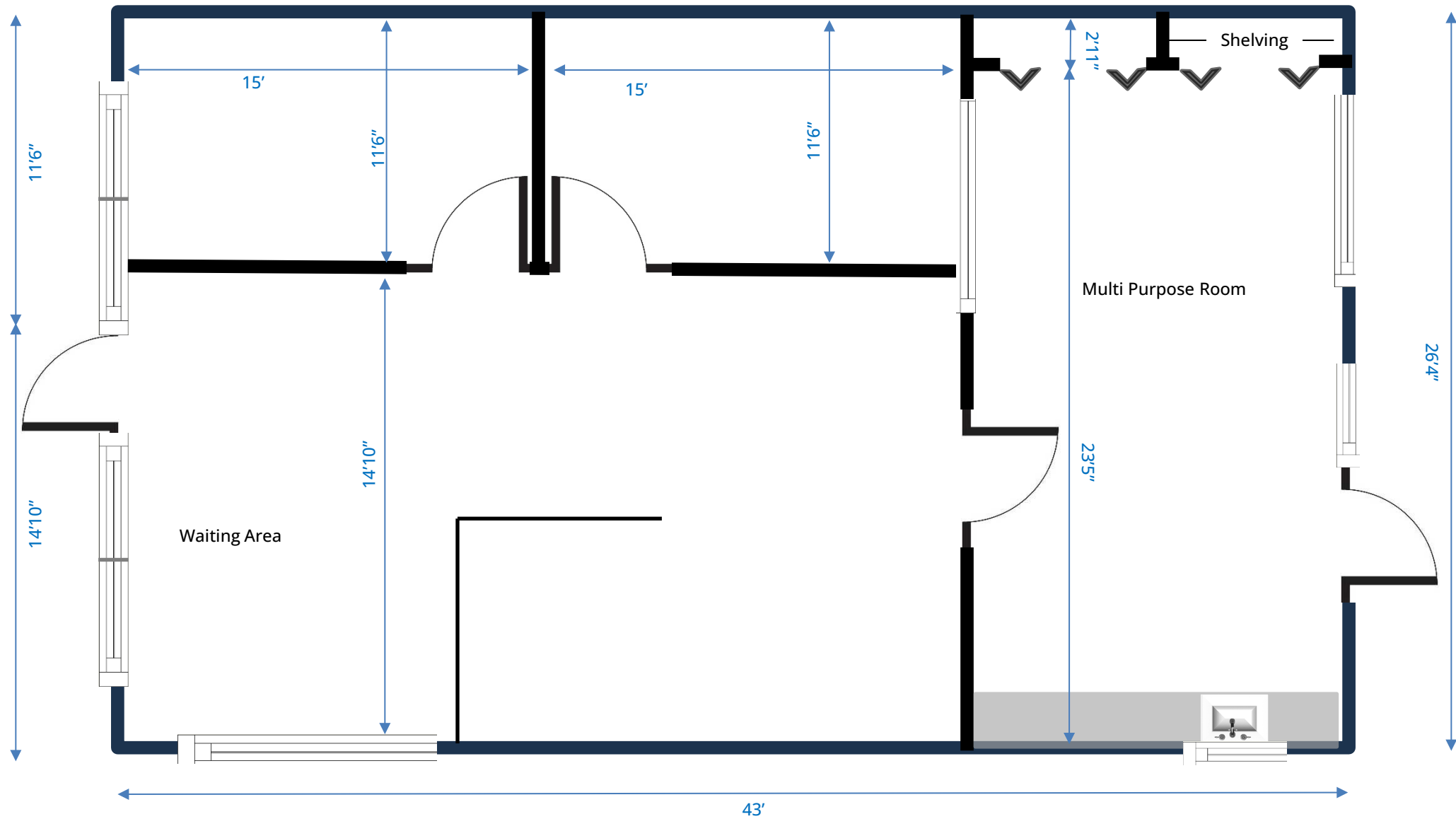
Address: 325 E. George Hopper Rd, Suite 107, Burlington WA

SF Available: 1,132 SF Total

Parking: 65 Stalls (Shared)

Price: \$429,000

FLOOR PLAN



PHOTOS - EXTERIOR



PHOTOS - INTERIOR



Space Entry – Front
Reception/ Bullpen



Reception/ Bullpen
– From Rear

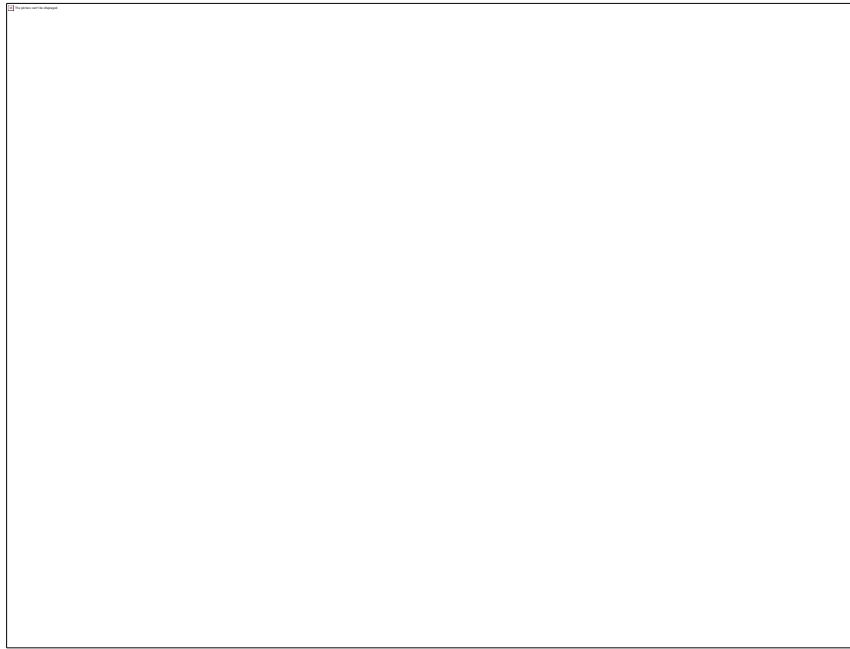


Waiting Area



Office 1

PHOTOS



Rear Break Room/
Kitchenette



Rear Break Room/
Kitchenette



Building Side +
Signage Directory



FOR MORE INFORMATION

PLEASE CONTACT:

TRACY CARPENTER

GAGE COMMERCIAL REAL ESTATE, LLC.

BROKER/OWNER

360.303.2608

TRACY@GAGECRE.COM

GREG MARTINEAU

GAGE COMMERCIAL REAL ESTATE, LLC.

BROKER/OWNER

360.820.4645

GREG@GAGECRE.COM