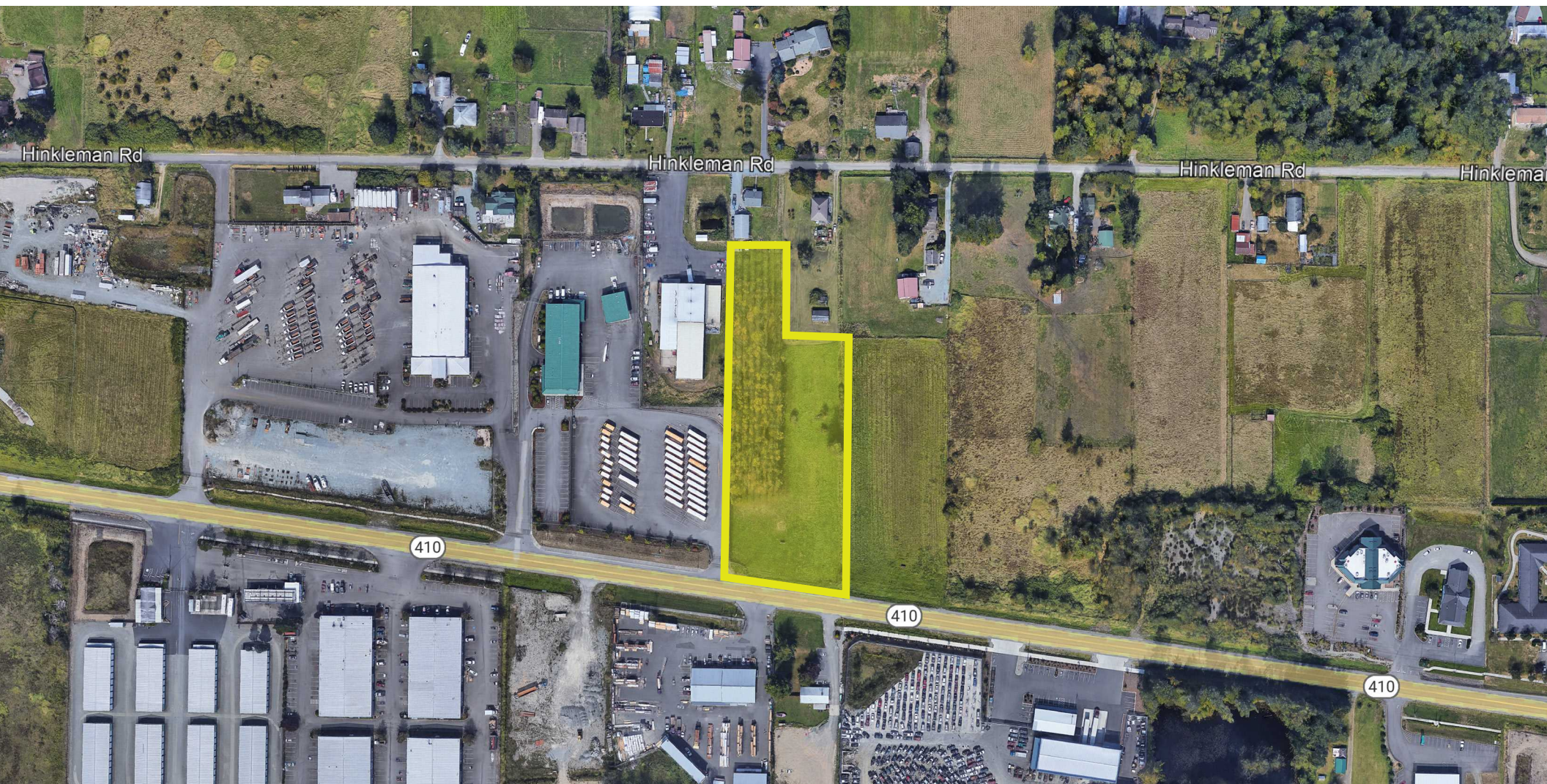


STATE ROUTE 410 E

BUCKLEY, WA

FOR SALE | 2.55 AC
ENTITLED INDUSTRIAL DEVELOPMENT SITE



NEWMARK

THAD MALLORY, SIOR
Vice Chairman
thad.mallory@nmrk.com
425.362.1410

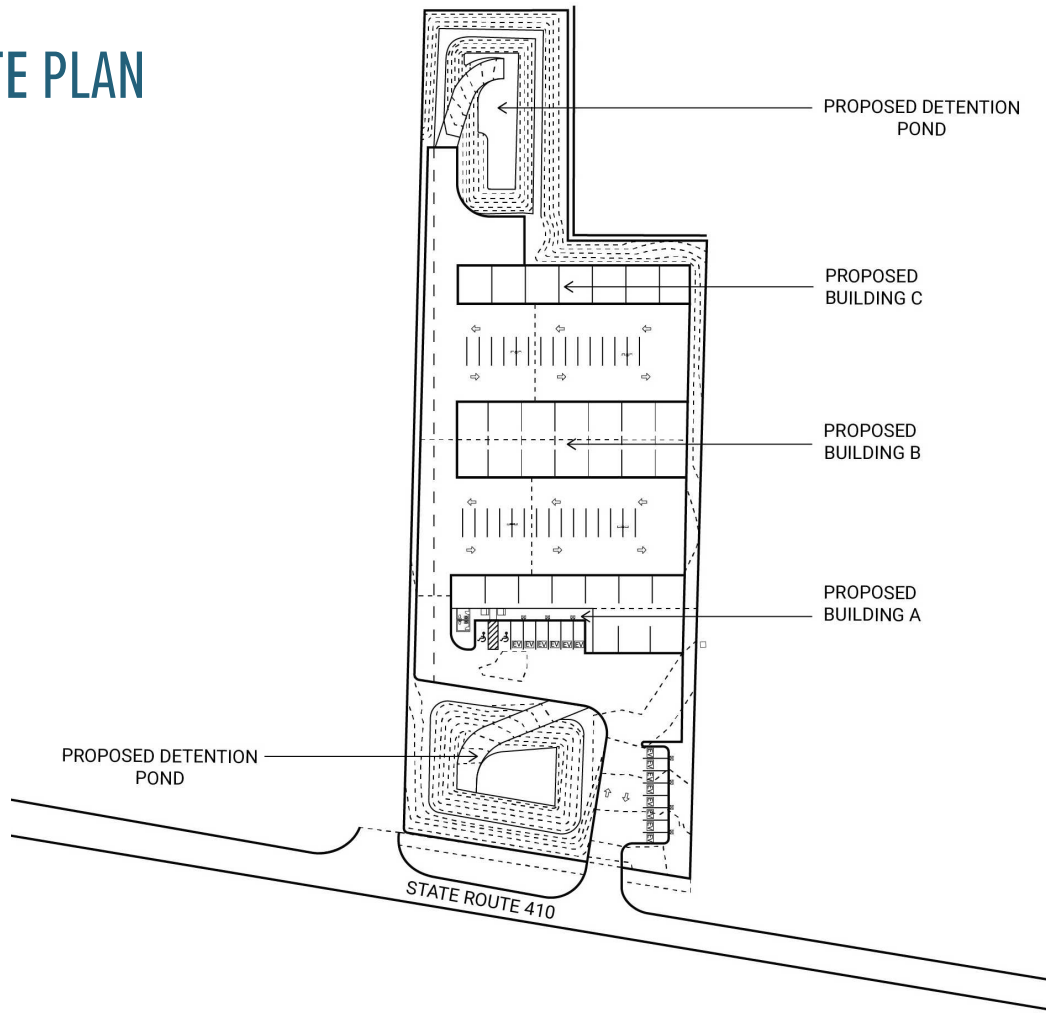
MORGAN RICHEY, SIOR
Managing Director
morgan.richey@nmrk.com
425.362.1409

STATE ROUTE 410 E

BUCKLEY, WA

FOR SALE | 2.55 AC

SITE PLAN



PROPERTY DETAILS

TOTAL AVAILABLE SIZE
2.55 AC (111,078 SF)

BUILDINGS

- SEPA approved to 26,588 SF of industrial over 3 buildings
- Fully SEPA approved and ready for building permit submittal

ZONING

Light Industrial

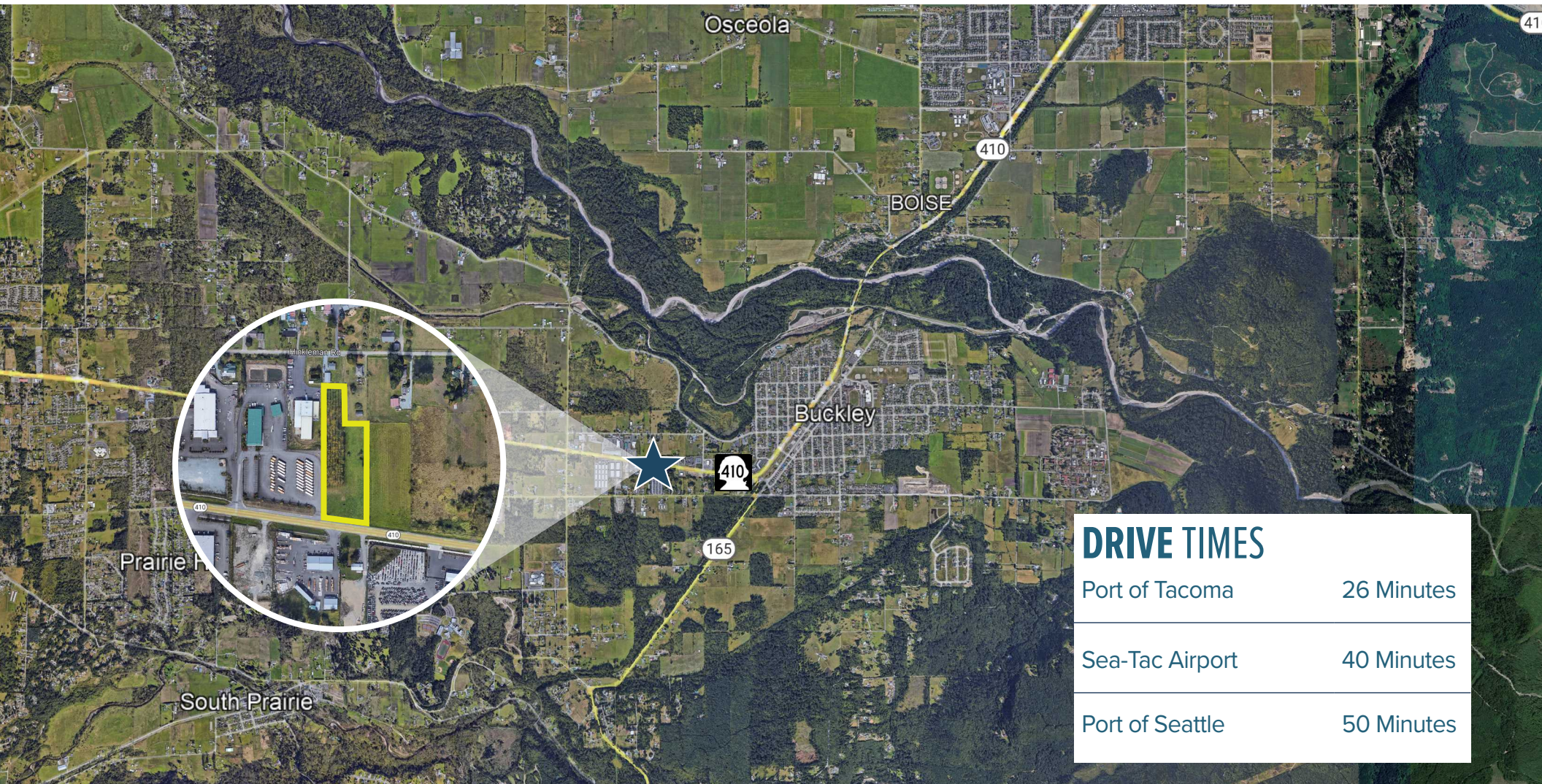
PRICE

\$2,100,000

STATE ROUTE 410 E

BUCKLEY, WA

FOR SALE | 2.55 AC



DRIVE TIMES

| | |
|-----------------|------------|
| Port of Tacoma | 26 Minutes |
| Sea-Tac Airport | 40 Minutes |
| Port of Seattle | 50 Minutes |