

FOR SALE

# 19734 144TH INDUSTRIAL

*10,000 SF Bldg That Sits On 31,371  
SF of Land in Woodinville, WA*

19734 144TH AVE NE, WOODINVILLE, WA

SUBJECT  
PROPERTY

KIDDER.COM

km Kidder  
Mathews

19734 144TH INDUSTRIAL

## *Property Highlights*

Fully leased with lease expiring 11/19/2026

Two additional 48 month extensions at  
market rental rates

±10,000 SF industrial building with ±500 SF Office

Outstanding parking that can be used as  
laydown yard

Sprinklered

LED lighting

21' clear height

One grade-level loading & three dock-high loading

**CALL BROKERS FOR PRICING**

**TODD GAUTHIER**

425.450.1118

todd.gauthier@kidder.com

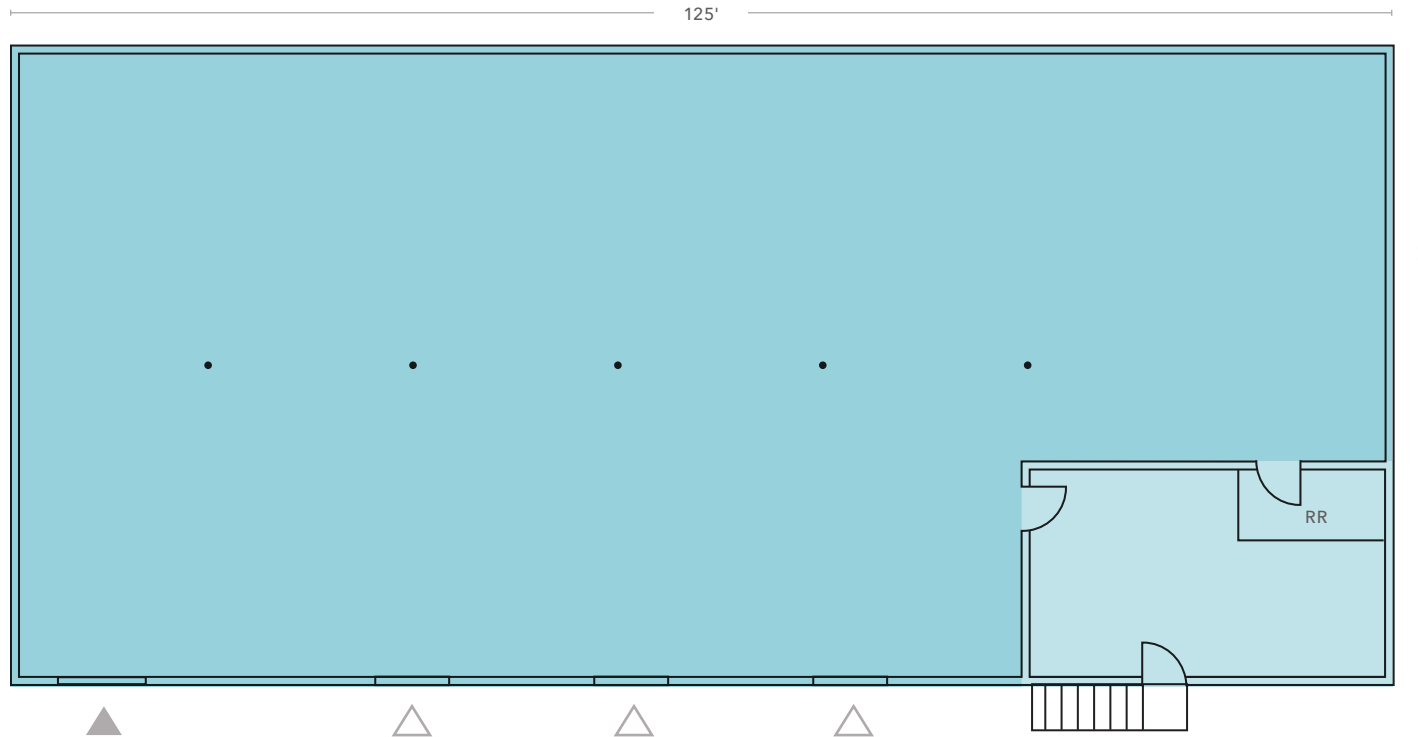
**JASON BLOOM**

425.450.1102

jason.bloom@kidder.com



## FIRST FLOOR PLAN



*±10,000 SF*

AVAILABLE

*±500 SF*

OFFICE

*CALL*

FOR PRICING

**TODD GAUTHIER**

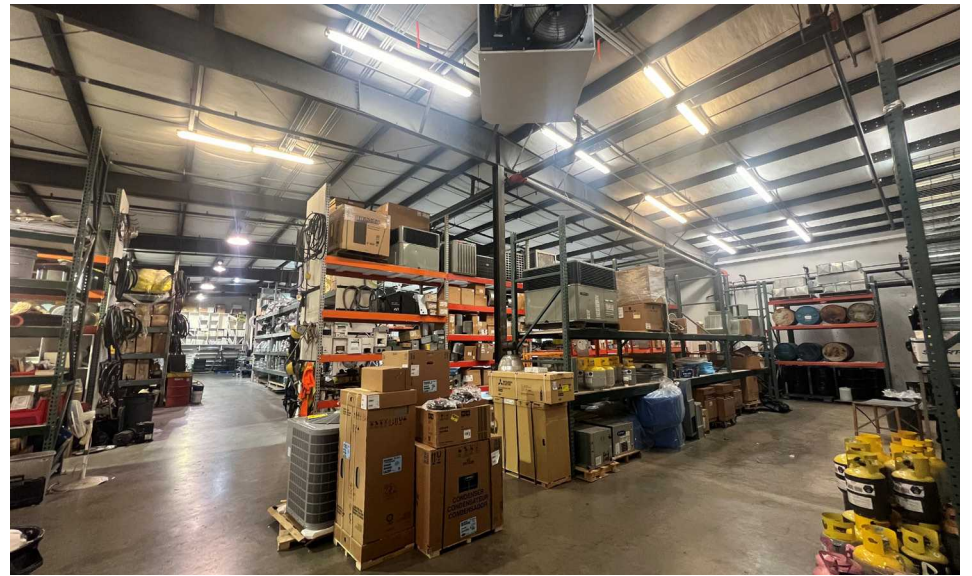
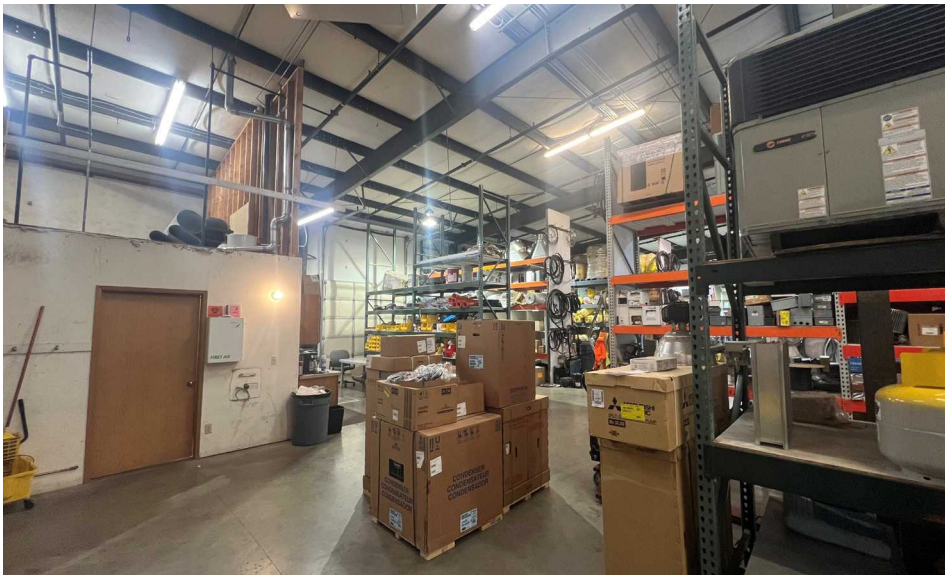
425.450.1118

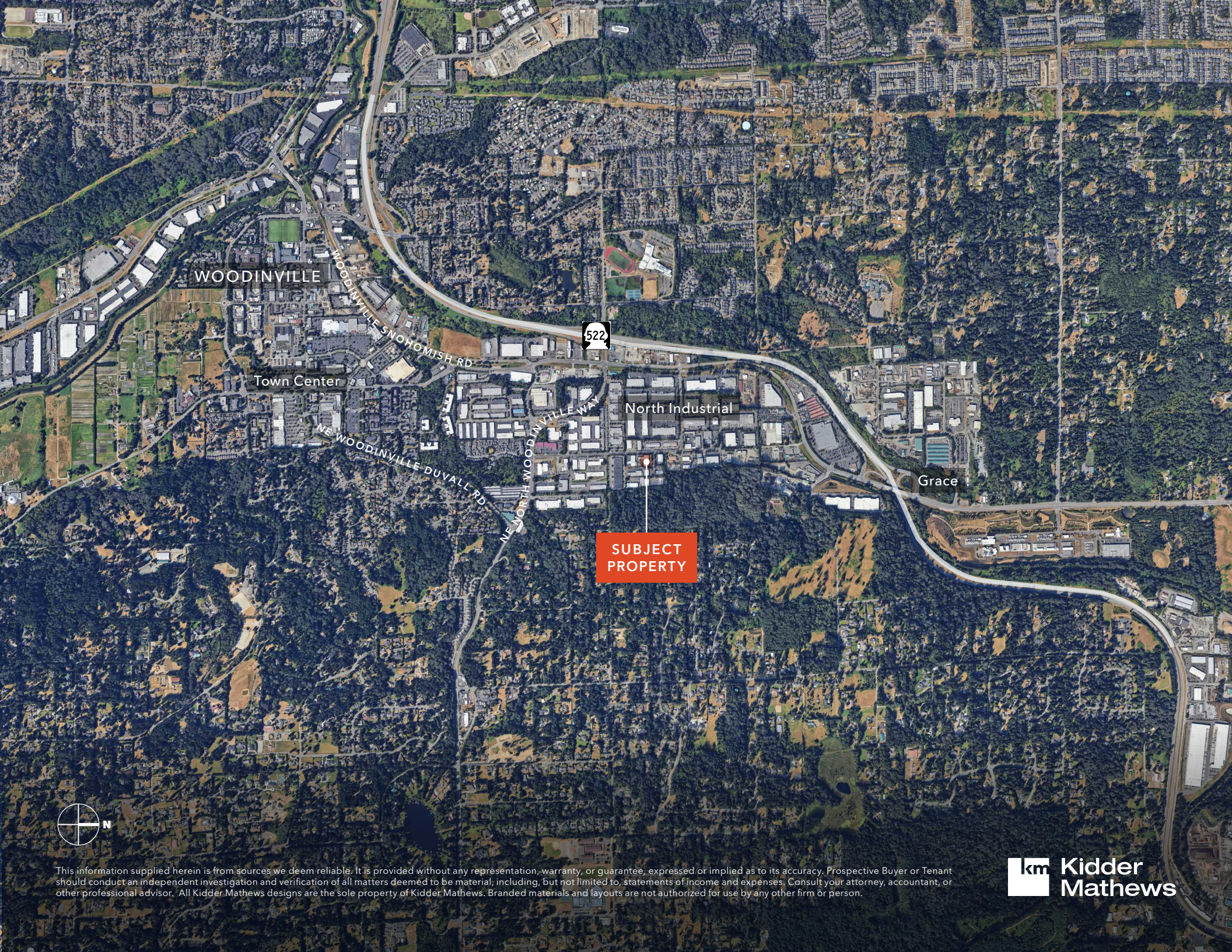
todd.gauthier@kidder.com

**JASON BLOOM**

425.450.1102

jason.bloom@kidder.com





WOODINVILLE

Town Center

North Industrial

Grace

SUBJECT  
PROPERTY

522



This information supplied herein is from sources we deem reliable. It is provided without any representation, warranty, or guarantee, expressed or implied as to its accuracy. Prospective Buyer or Tenant should conduct an independent investigation and verification of all matters deemed to be material, including, but not limited to, statements of income and expenses. Consult your attorney, accountant, or other professional advisor. All Kidder Mathews designs are the sole property of Kidder Mathews. Branded materials and layouts are not authorized for use by any other firm or person.