

For Sale  
**Hospitality**

**NAI**Black



## Nordlig Motel

101 W Grant Ave  
Chewelah, Washington 99109

### Property Highlights

- Parcel Numbers: 0243100 & 0244100
- Residential Bldg. Size: 2,680 SF ±
- 14 Room Motel: 4,415 SF ±
- Combined Total Lot Size: 48,787 SF ±
- Residential/Retail Zoning
- Historic Architecture
- Four Bed, Two Baths in Residential Home
- Insulated Shop
- Carport
- Remodeled in 2022

### Property Description

The Nordlig Motel in Chewelah, WA presents a unique and promising opportunity for both seasoned and aspiring hospitality investors. With its established reputation and over 40 years of continuous operation, the motel enjoys a loyal customer base and prime visibility along Highway 395 — a key route for travelers heading to and from Spokane, Canada, and the nearby 49° North Mountain Resort. The inclusion of a residential home on the property significantly enhances its value, offering either owner-occupied convenience or potential for additional income as a long-term rental or vacation listing.

**Sale Price: \$1,400,000**



For more information

**John Powers**

O: 509 622 3563

[jpowers@naiblack.com](mailto:jpowers@naiblack.com)

**Eric Weaver**

O: 360 631 1526

[eric.weaver@naiblack.com](mailto:eric.weaver@naiblack.com)

No warranty or representation, expression or implied, is made as to the accuracy of the information contained herein, and the same is submitted subject to errors, omissions, change or price, rental or other conditions, prior to sale, lease, financing, or withdrawal without notice, and of special listing conditions imposed by our principals no warranties or representations are made as to the condition of the property or any hazards contained therein or any to be implied.

801 W. Riverside Avenue, Suite 300  
Spokane, WA 99201  
509 623 1000 tel  
[naiblack.com](http://naiblack.com)



For Sale  
**Hospitality**

**NAI**Black



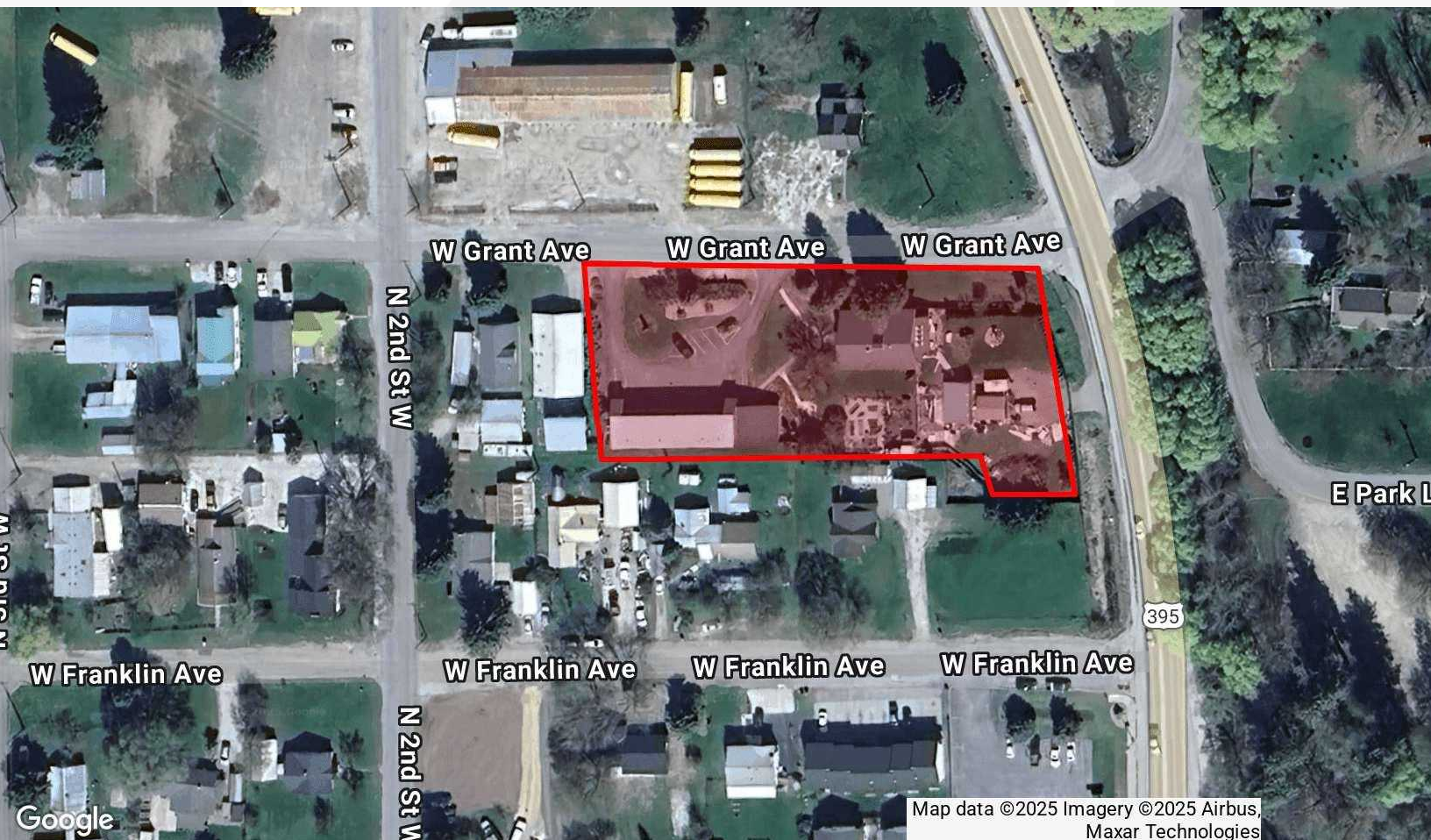
No warranty or representation, expression or implied, is made as to the accuracy of the information contained herein, and the same is submitted subject to errors, omissions, change or price, rental or other conditions, prior to sale, lease, financing, or withdrawal without notice, and of special listing conditions imposed by our principals no warranties or representations are made as to the condition of the property or any hazards contained therein or any to be implied.

801 W. Riverside Avenue, Suite 300  
Spokane, WA 99201  
509 623 1000 tel  
[naiblack.com](http://naiblack.com)



For Sale  
**Hospitality**

**NAI**Black



No warranty or representation, expression or implied, is made as to the accuracy of the information contained herein, and the same is submitted subject to errors, omissions, change or price, rental or other conditions, prior to sale, lease, financing, or withdrawal without notice, and of special listing conditions imposed by our principals no warranties or representations are made as to the condition of the property or any hazards contained therein or any to be implied.

801 W. Riverside Avenue, Suite 300  
Spokane, WA 99201  
509 623 1000 tel  
[naiblack.com](http://naiblack.com)