

BIG E AUTO REBUILD PROPERTY

FOR SALE

912 SW 146TH ST | BURIEN, WA

LEASED INVESTMENT: AUTO BODY SHOP AND YARD IN THE HEART OF BURIEN



SALE INFORMATION

Building Size:	8,474 SF
Office Size:	2,090 SF (1,596 SF on 2nd floor)
Land Size:	23,016 SF
Year Built:	2000 Renovation
Sale Price:	\$3,496,782
NOI:	\$192,323
Lease Term:	June 30, 2029 Expiration

PROPERTY HIGHLIGHTS

- 12,000 SF of Secured & Paved Parking
- 3 State of the Art Paint Booths
- Oil Water Separator on Site
- Sprinklered and 16' Clear Height in Warehouse
- 3 Phase Power
- 6 Grade Level Doors
- New Roof (2018) and New HVAC (2024)
- High End Office Buildout w/Lockeroom
- Desirable Ambaum Blvd Location



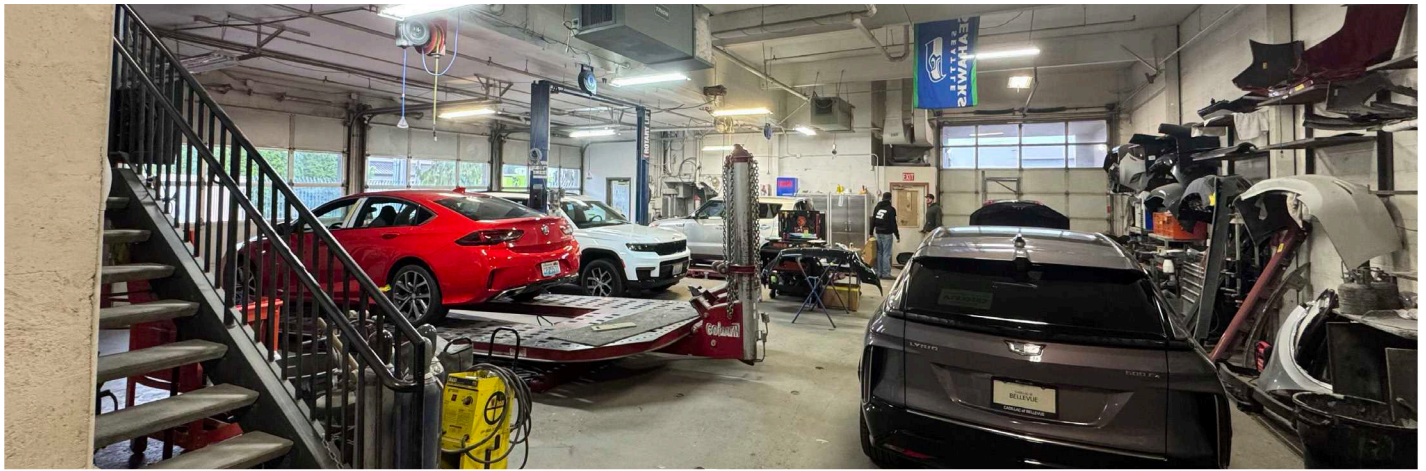
GRIFFIN DAY
206.261.4012
gday@neilwalter.com

JIM HONAN
206.399.7649
jhonan@neilwalter.com

All information references in this document are approximate. The information contained herein is contained from sources deemed reliable. It is provided without representation, warranty, or guarantee, expressed or implied as to accuracy. Prospective buyer or tenant should conduct its own independent investigation relating to the property, government codes and regulations, allowed uses, and all other matters, regardless of whether they are referred to or contained in this document.

BIG E AUTO REBUILD PROPERTY

912 SW 146TH ST | BURIEN, WA



GRIFFIN DAY
206.261.4012
gday@neilwalter.com

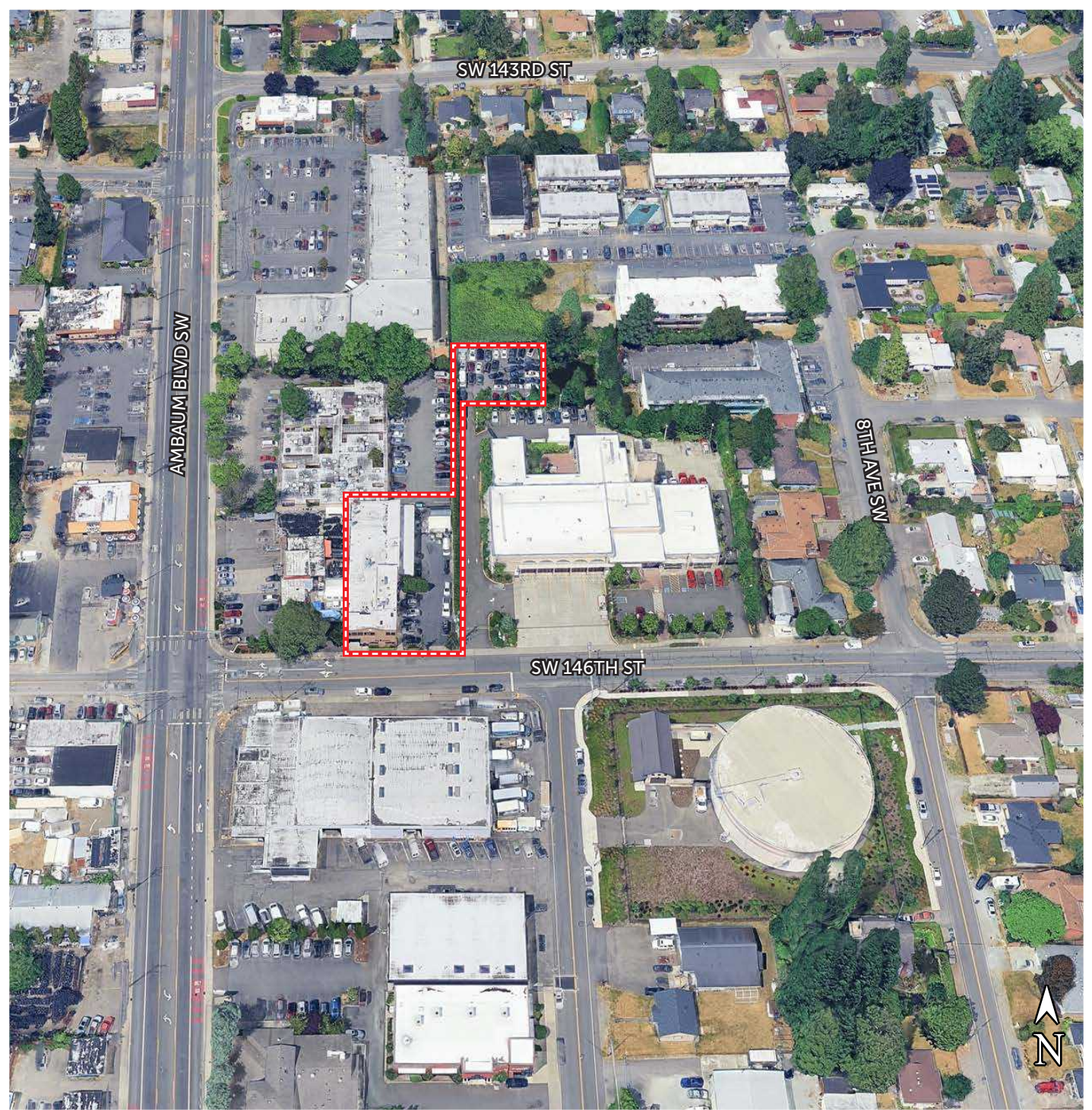
JIM HONAN
206.399.7649
jhonan@neilwalter.com

550 S Michigan St
Seattle, WA 98108
206.787.1800
www.neilwalter.com

All information references in this document are approximate. The information contained herein is contained from sources deemed reliable. It is provided without representation, warranty, or guarantee, expressed or implied as to accuracy. Prospective buyer or tenant should conduct its own independent investigation relating to the property, government codes and regulations, allowed uses, and all other matters, regardless of whether they are referred to or contained in this document.

BIG E AUTO REBUILD PROPERTY

912 SW 146TH ST | BURIEN, WA



GRIFFIN DAY
206.261.4012
gday@neilwalter.com

JIM HONAN
206.399.7649
jhonan@neilwalter.com

550 S Michigan St
Seattle, WA 98108
206.787.1800
www.neilwalter.com

All information references in this document are approximate. The information contained herein is contained from sources deemed reliable. It is provided without representation, warranty, or guarantee, expressed or implied as to accuracy. Prospective buyer or tenant should conduct its own independent investigation relating to the property, government codes and regulations, allowed uses, and all other matters, regardless of whether they are referred to or contained in this document.