

398 SW WYCOFF RD

PORT ORCHARD, WA 98367

022201-2-003-2000

352301-3-011-2008

352301-3-010-2009

*± 31 Acre lot for large lot
subdivision just across Kitsap
County Lines for Sale*

Existing 2,120 SF house with 1600 square foot
daylight basement with ±\$1M market value

Zoning: Rural Residential (1 DU/5 AC)

Large old growth timbers with timbering estimates
over \$900K

Property consists of three parcels totaling just over
31 acres of land

- 352301-3-011-2008
- 352301-3-010-2009
- 022201-2-003-2000

\$2,300,000

SALE PRICE

CONTACT

BROKER FOR MORE INFORMATION

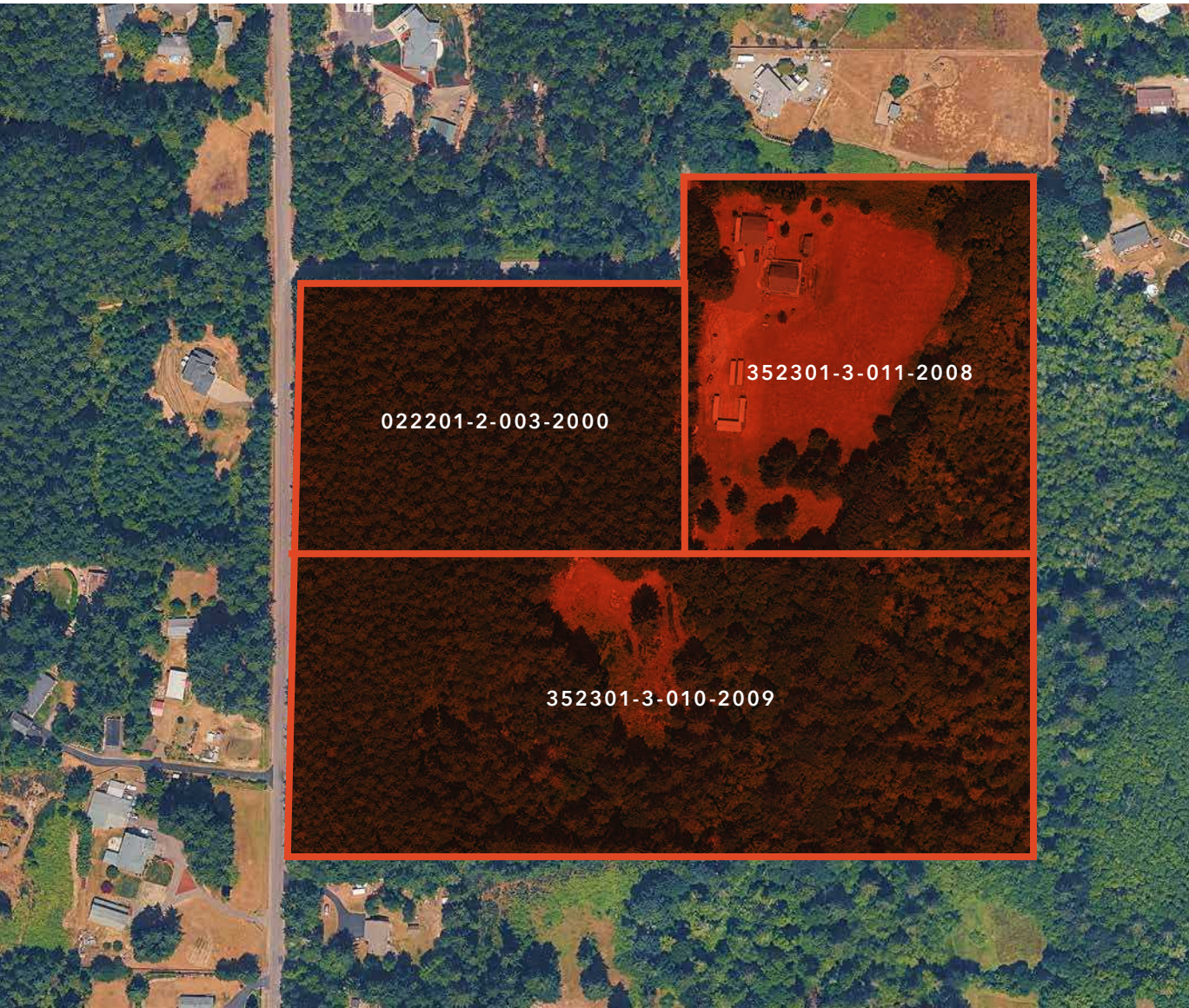
BRUCE BARKER, MBA

253.722.1459 | bruce.barker@kidder.com

KIDDER.COM

This information supplied herein is from sources we deem reliable. It is provided without any representation, warranty, or guarantee, expressed or implied as to its accuracy. Prospective Buyer or Tenant should conduct an independent investigation and verification of all matters deemed to be material, including, but not limited to, statements of income and expenses. Consult your attorney, accountant, or other professional advisor. All Kidder Mathews designs are the sole property of Kidder Mathews. Branded materials and layouts are not authorized for use by any other firm or person.





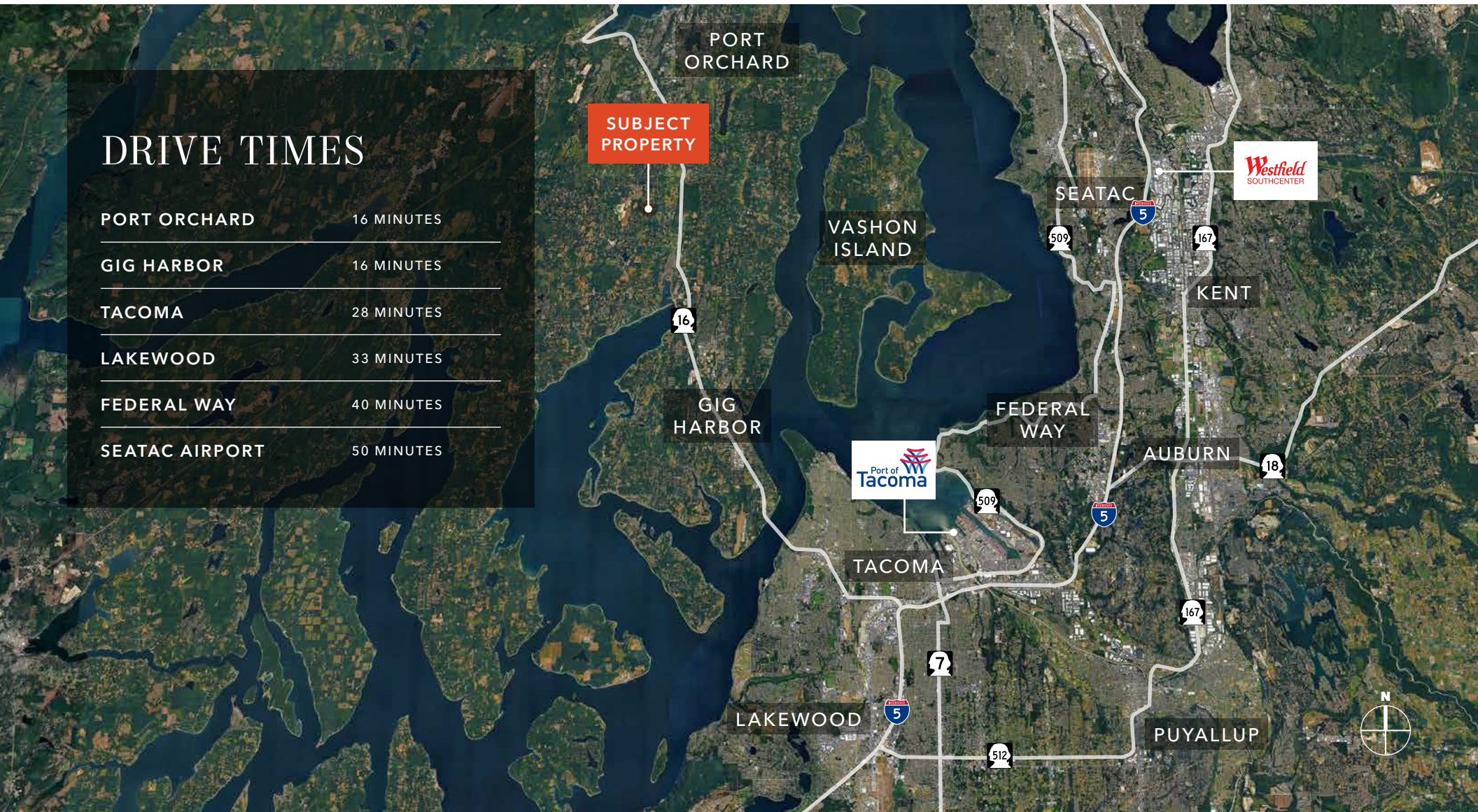
KIDDER.COM

This information supplied herein is from sources we deem reliable. It is provided without any representation, warranty, or guarantee, expressed or implied as to its accuracy. Prospective Buyer or Tenant should conduct an independent investigation and verification of all matters deemed to be material, including, but not limited to, statements of income and expenses. Consult your attorney, accountant, or other professional advisor. All Kidder Mathews designs are the sole property of Kidder Mathews. Branded materials and layouts are not authorized for use by any other firm or person.

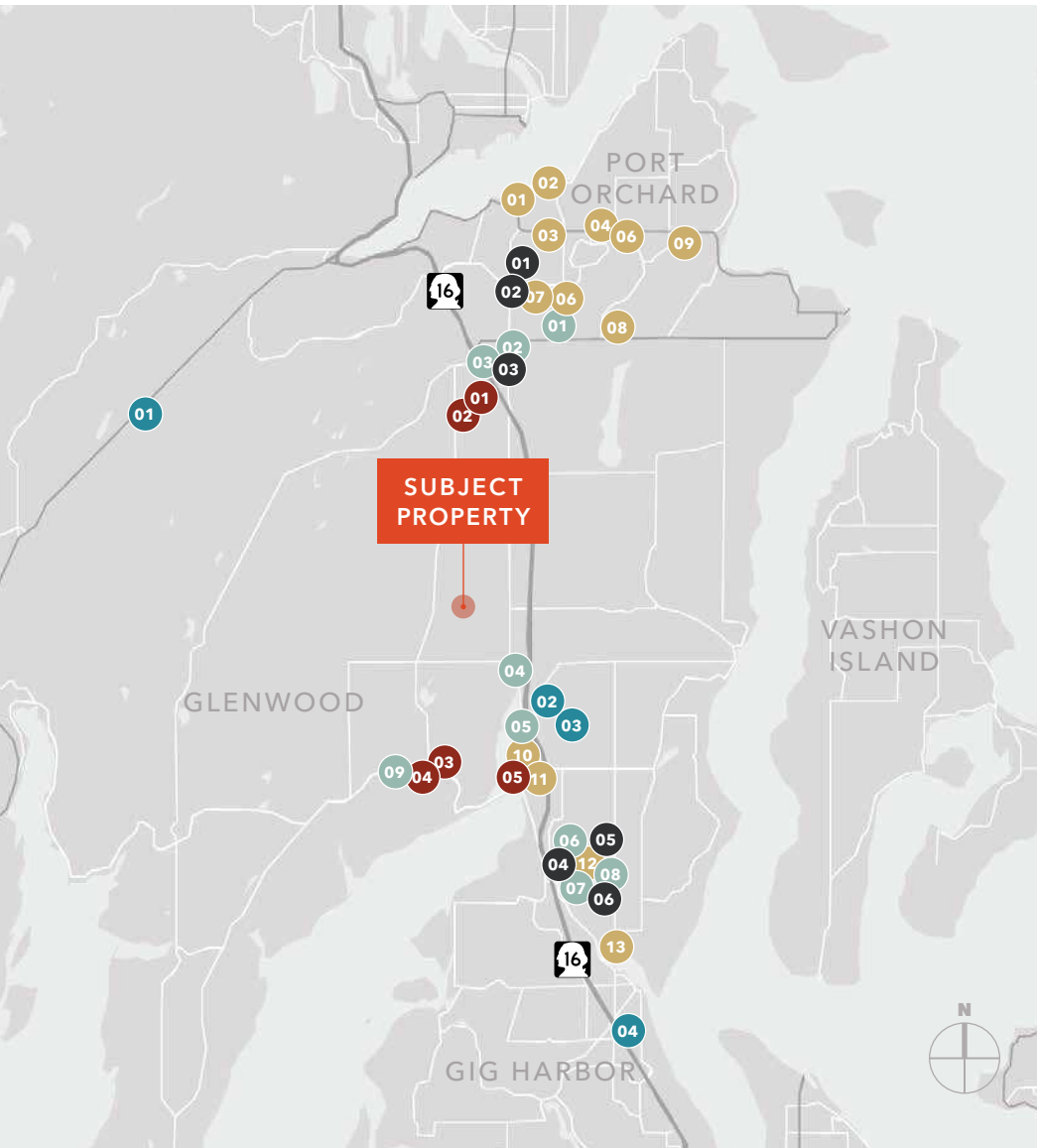


DRIVE TIMES

PORT ORCHARD	16 MINUTES
GIG HARBOR	16 MINUTES
TACOMA	28 MINUTES
LAKEWOOD	33 MINUTES
FEDERAL WAY	40 MINUTES
SEATAC AIRPORT	50 MINUTES

[KIDDER.COM](https://www.kidder.com)

This information supplied herein is from sources we deem reliable. It is provided without any representation, warranty, or guarantee, expressed or implied as to its accuracy. Prospective Buyer or Tenant should conduct an independent investigation and verification of all matters deemed to be material, including, but not limited to, statements of income and expenses. Consult your attorney, accountant, or other professional advisor. All Kidder Mathews designs are the sole property of Kidder Mathews. Branded materials and layouts are not authorized for use by any other firm or person.



EAT + DRINK

- 01 Mina's Cafe
- 02 Brickhouse 714 Bar & Grill
- 03 Taqueria Mucho
- 04 Pho Season
- 05 Spiro's Pizza & Pasta
- 06 Wendy's
- 07 Tapatios Mexican Grill
- 08 Blue Agave
- 09 East Teriyaki
- 10 Easy Thai Easy Go
- 11 Local Boys Tap Room
- 12 Mod Pizza
- 13 Morso Bistro

BANKS

- 01 Kitsap Bank
- 02 Bank of America
- 03 Umpqua Bank
- 04 Chase Bank
- 05 Key Bank
- 06 BECU Credit Union

SHOPS

- 01 Walmart
- 02 Fred Meyer
- 03 Safeway
- 04 Burley Store
- 05 Bridgeway Market
- 06 Target
- 07 Costco
- 08 Walgreens
- 09 Dollar Tree

MEDICAL

- 01 Harrison Belfair Urgent Care
- 02 St. Anthony's Hospital
- 03 MultiCare Urgent Care
- 04 Franciscan Urgent Care

CAFFEINE

- 01 Revive Coffee
- 02 Gravity Coffee
- 03 Morning Star Espresso
- 04 Ravensara Espresso
- 05 Cutters Point