

OFFERING MEMORANDUM

1550 CREEKSIDE CONDOS

*Office condos available for sale
in Bellevue's Bel-Red District*

1550 140TH AVE NE | BELLEVUE, WA

JAY BENNETT

Vice President

425.450.1187

jay.bennett@kidder.com

HOLLY YANG, CCIM

Senior Vice President

425.450.1155

holly.yang@kidder.com

KIDDER.COM



1550 140TH AVE NE



A PREMIER OFFERING
IN BELLEVUE'S
BEL-RED DISTRICT

Office condos available for sale, with convenient access to major highways SR-520 and I-405, Link light rail, plus abundant Bellevue retail and restaurant amenities.

PROPERTY HIGHLIGHTS

ADDRESS	1550 140th Ave NE Bellevue, WA 98005
AVAILABLE SF	1023 SF - Rentable, 867 SF - Condo Interior
YEAR BUILT	1988
PARKING	4/1000
ZONING	BR-ORT
AVAILABLE UNITS	201, 203 (combined)
PARCELS	1822430040, 1822430060
2025 ASSESSED VALUE	\$628,500

\$599,000

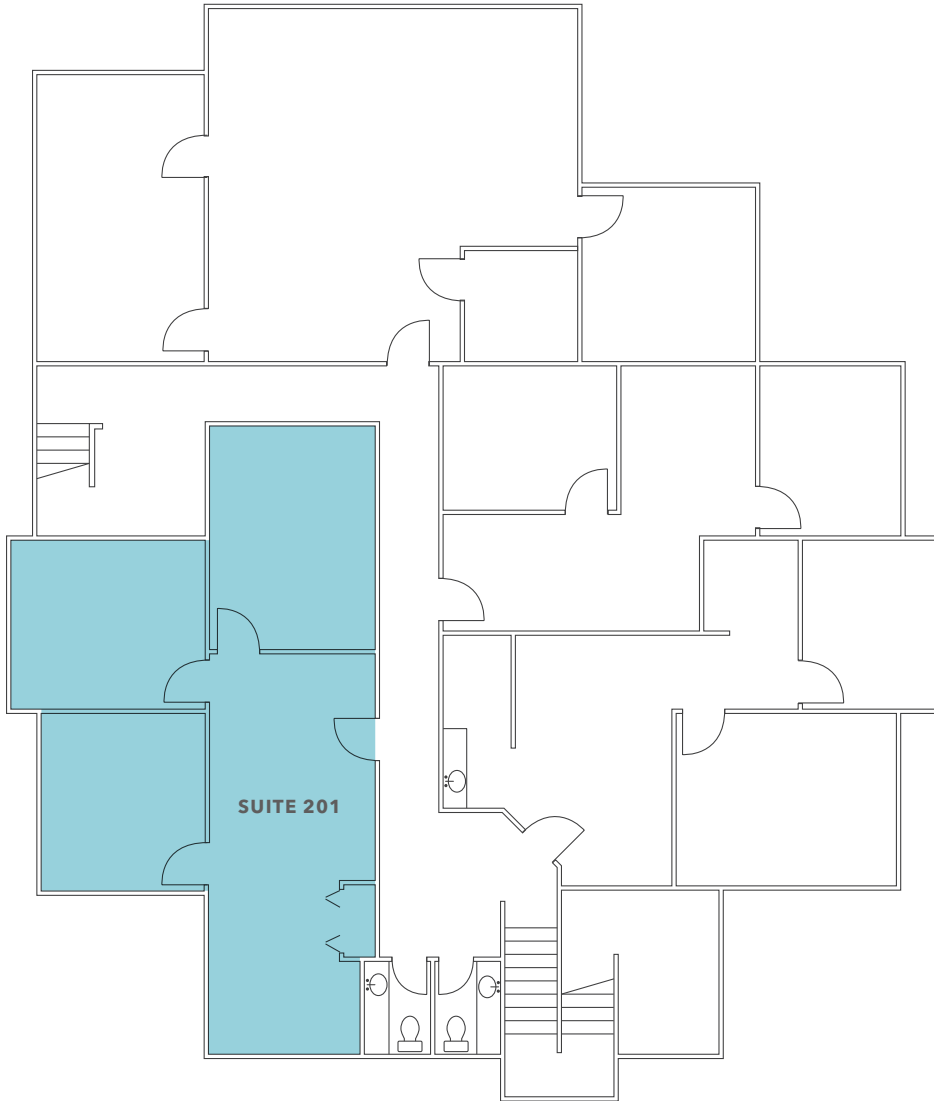
SALE PRICE

Exclusively listed by

JAY BENNETT
Vice President
425.450.1187
jay.bennett@kidder.com

HOLLY YANG, CCIM
Senior Vice President
425.450.1155
holly.yang@kidder.com

FLOORPLAN



1,023 SF

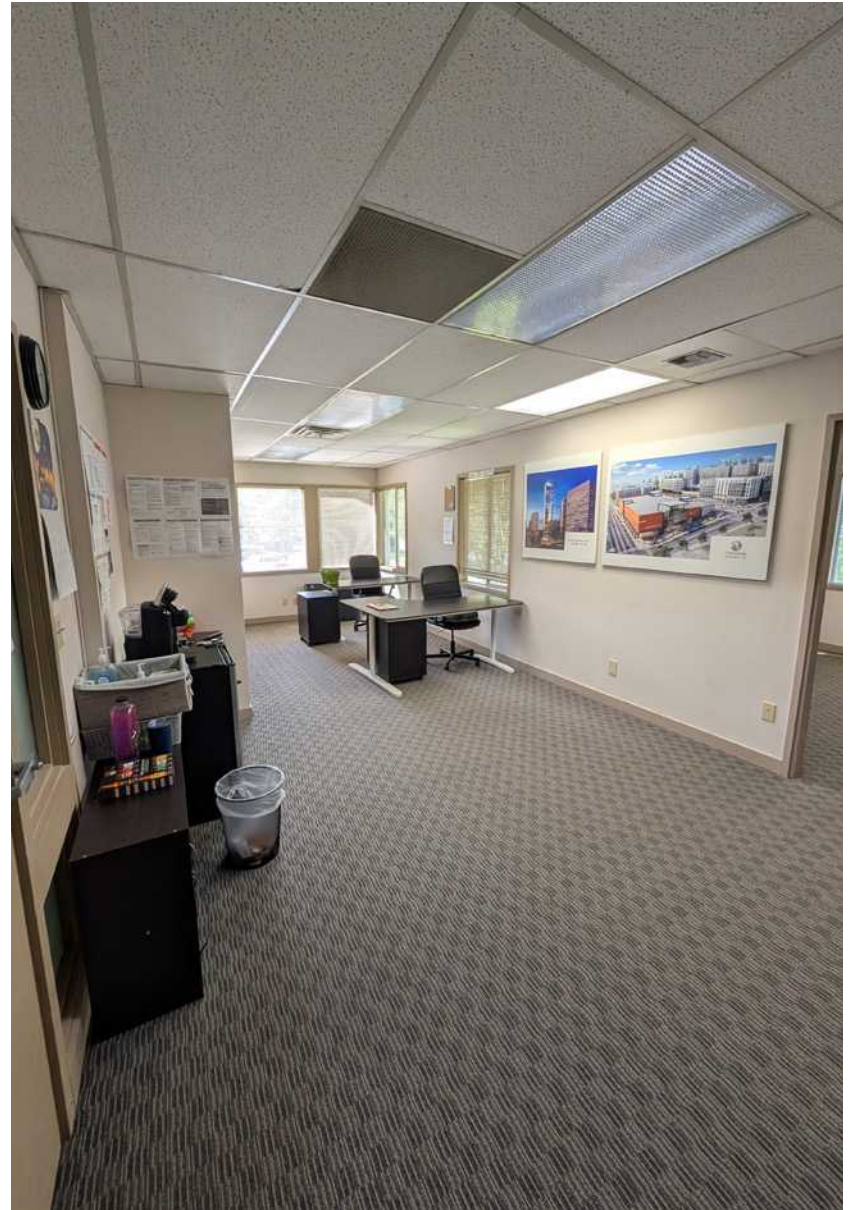
SUITE 201

UNIT HIGHLIGHTS

ANNUAL HOA DUES	\$10,716
2025 PROPERTY TAXES	\$4,642
TOTAL 2025 OPEX	\$15,358
PRO-RATA SHARE OF 1550 CONDO BLDG	14.60%
COMMON RESTROOMS ADJACENT TO UNIT.	2
FLOOR	2nd-floor walkup (no elevator)

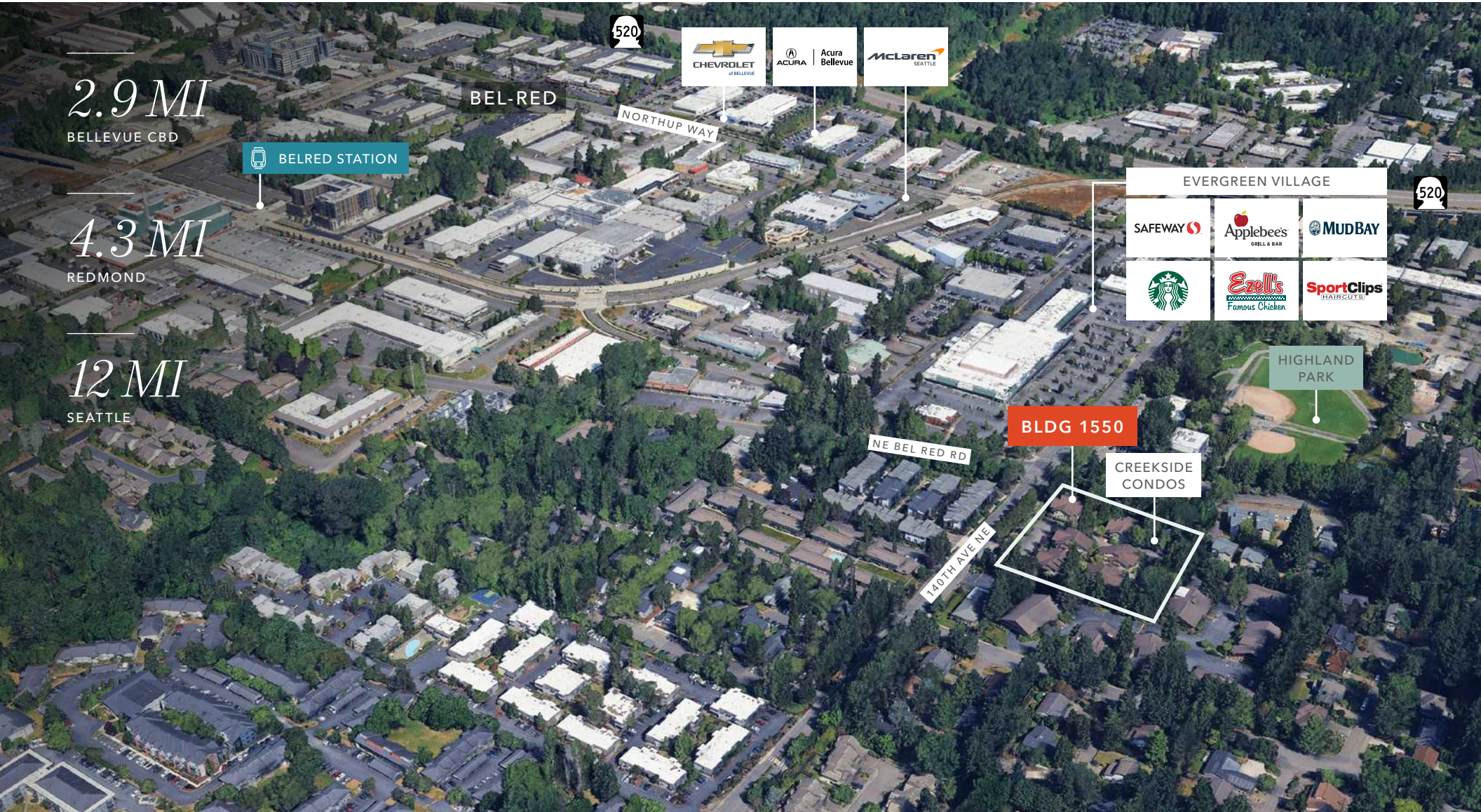


1550 140TH AVE NE



AVAILABLE FOR SALE

KIDDER MATHEWS



KIDDER.COM

This information supplied herein is from sources we deem reliable. It is provided without any representation, warranty, or guarantee, expressed or implied as to its accuracy. Prospective Buyer or Tenant should conduct an independent investigation and verification of all matters deemed to be material, including, but not limited to, statements of income and expenses. Consult your attorney, accountant, or other professional advisor. All Kidder Mathews designs are the sole property of Kidder Mathews. Branded materials and layouts are not authorized for use by any other firm or person.

Exclusively listed by

JAY BENNETT

Vice President

425.450.1187

jay.bennett@kidder.com

HOLLY YANG, CCIM

Senior Vice President

425.450.1155

holly.yang@kidder.com

KIDDER.COM

