

GAYTEWAY

BUSINESS PARK

6913-7010 197TH PL NE & 20100 67TH AVE NE | ARLINGTON, WA

26.13 ACRES
INDUSTRIAL LAND FOR SALE

**Premier Industrial
Development
Opportunity**

**26.13 Acres
Industrial Zoned
Land**

Lot 1, 2: 10.54 Acres
Lot 5, 6, 7: 15.59 Acres

BRODERICK
• GROUP •

For more information, or to
schedule a tour, please contact:

AL HODGE
425.646.5240
hodge@broderickgroup.com

ERIC MEUSSNER
425.274.4282
meussner@broderickgroup.com



GAYTEWAY BUSINESS PARK

6913-7010 197TH PL NE & 20100 67TH AVE NE | ARLINGTON, WA

SUMMARY

Broderick Group, Inc. is pleased to present an excellent opportunity to acquire Gayteway Business Park, 26.13 acres of land zoned for industrial development within Seattle's growing Northend submarket. Gayteway Business Park offers an investor or owner-user the opportunity to redevelop the site for a variety of industrial uses including, manufacturing, R&D, logistics or warehousing. Close to skilled labor, I-5 and an hour north of downtown Seattle.

ADDRESS

6913-7010 197th Pl NE
Arlington, WA

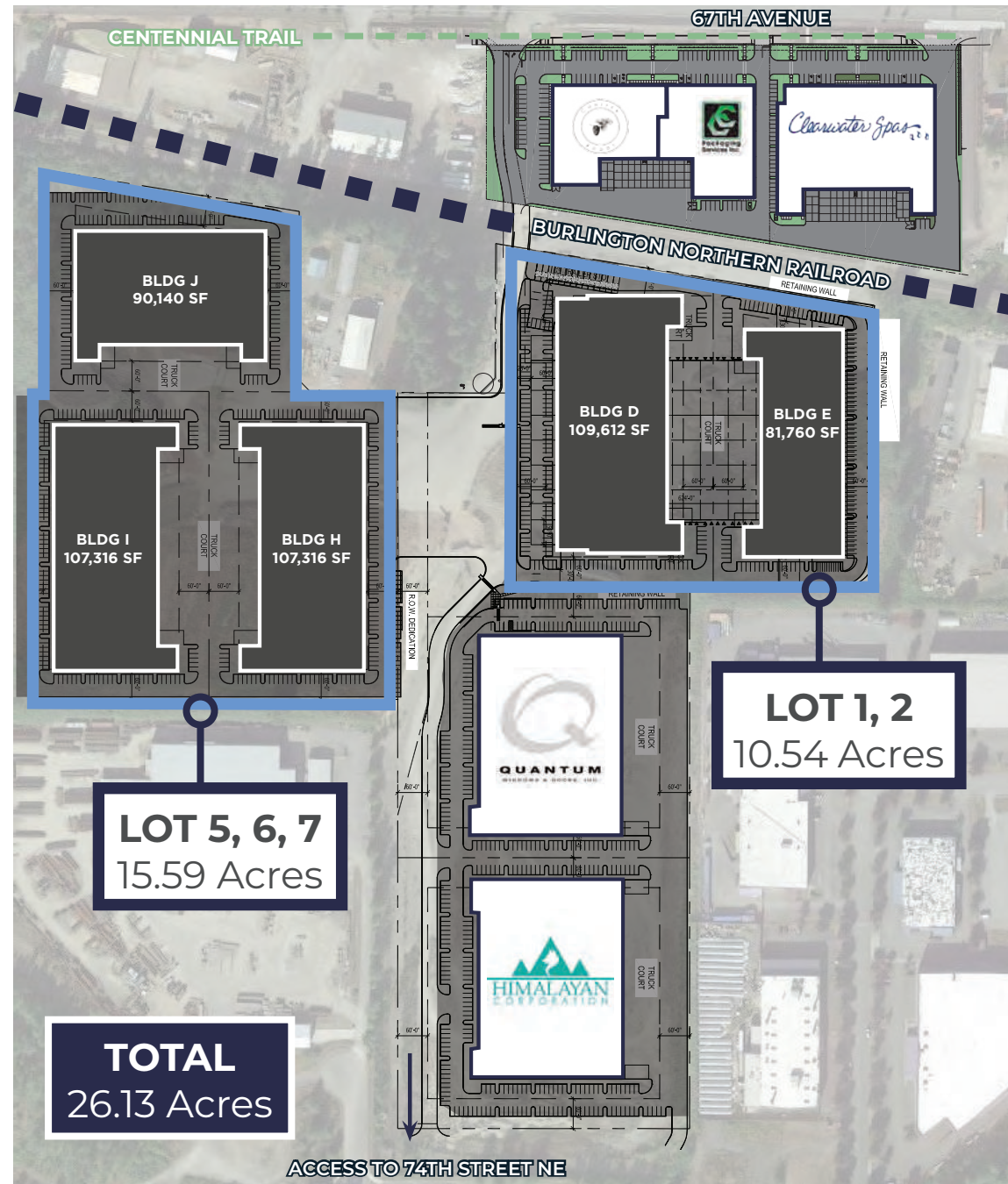
20100 67th Ave NE
Arlington, WA

TOTAL PROPERTY AREA

26.13 acres
Lot 1, 2: 10.54 Acres | Lot 5, 6, 7: 15.59 Acres

ZONING

General Industrial (GI)



GAYTEWAY BUSINESS PARK

6913-7010 197TH PL NE & 20100 67TH AVE NE | ARLINGTON, WA

INVESTMENT HIGHLIGHTS

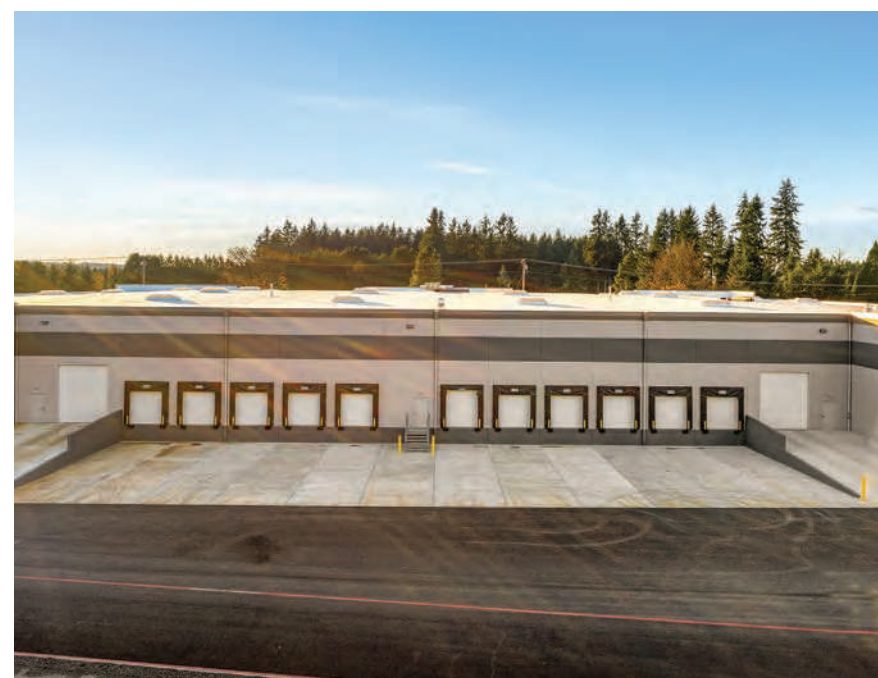
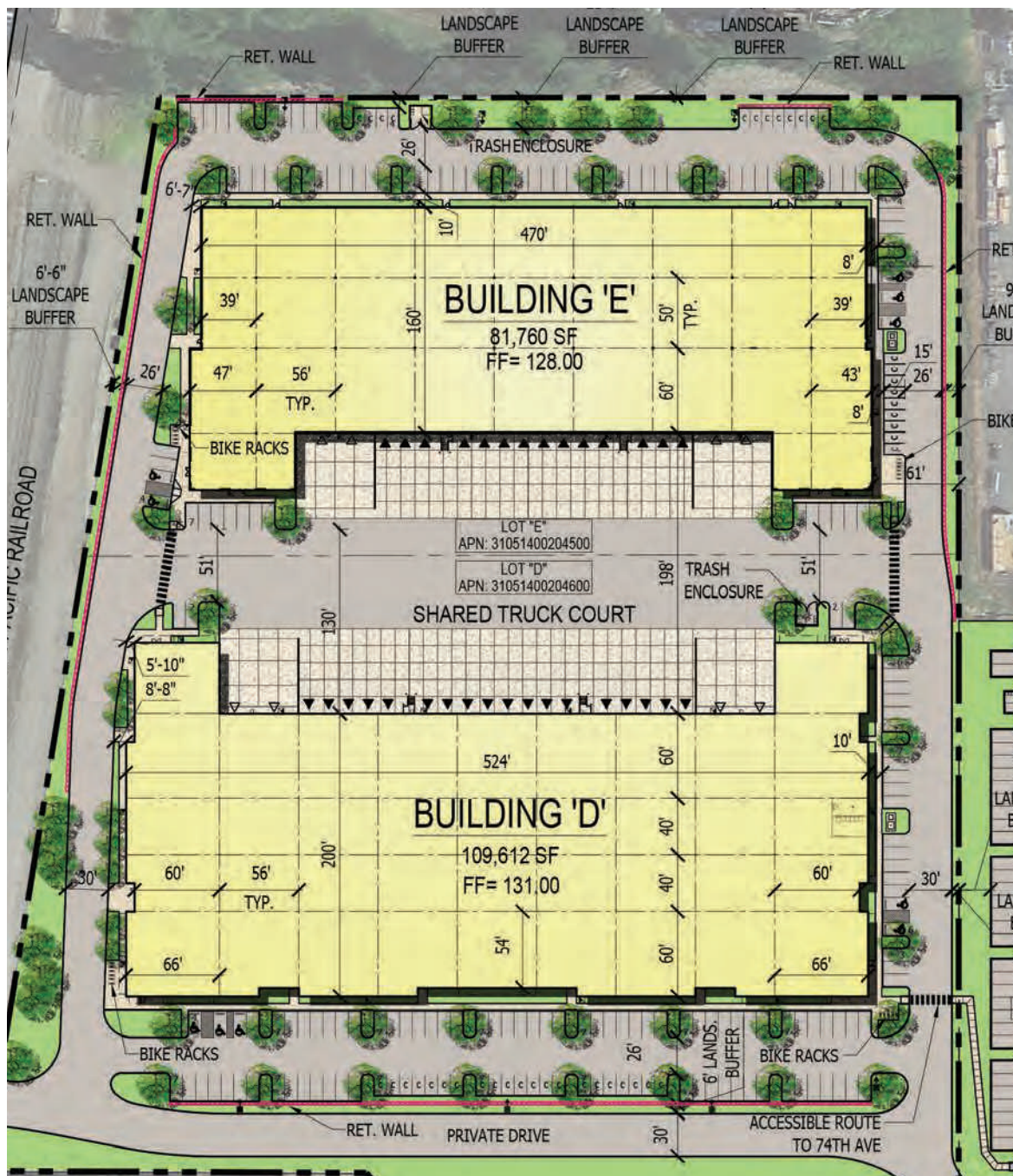


- Prime Northend location, 4 miles from I-5, 1 hour from Seattle WA a Tier 1 global investment market
- Clear path to entitlements, providing predictable timelines
- Growing market – Northend provides a “release valve” for tenants seeking high-quality product and skilled labor
- Lower cost of living and growing high tech industries are attracting young, educated residents to Snohomish County



GAYTEWAY BUSINESS PARK
6913-7010 197TH PL NE & 20100 67TH AVE NE | ARLINGTON, WA

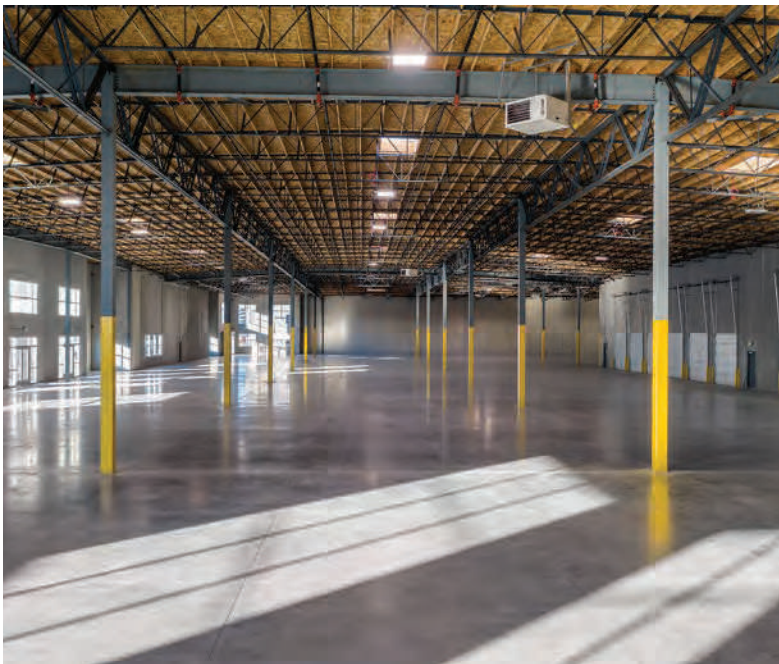
BLDGS. D & E



GAYTEWAY BUSINESS PARK

6913-7010 197TH PL NE & 20100 67TH AVE NE | ARLINGTON, WA

DRIVE TIMES



PAINE FIELD AIRPORT

24.1 miles / 29 min

PORT OF EVERETT

15.6 miles / 24 min

EVERETT CBD

16.5 miles / 24 min

SEATTLE CBD

44.1 miles / 55 min

SEATAC AIRPORT

60.1 miles / 85 min

BELLEVUE CBD

44.4 miles / 55 min

CANADIAN BORDER

75 miles / 78 min



GAYTEWAY BUSINESS PARK

6913-7010 197TH PL NE & 20100 67TH AVE NE | ARLINGTON, WA

AERIAL MAP





GAYTEWAY

B U S I N E S S P A R K

6913-7010 197TH PL NE & 20100 67TH AVE NE | ARLINGTON, WA

BRODERICK
• GROUP •

For more information, or to schedule a tour, please contact:

AL HODGE
425.646.5240

hodge@broderickgroup.com

ERIC MEUSSNER
425.274.4282

meussner@broderickgroup.com