

FOR SALE | INDUSTRIAL CONDO
OWNER USER OPPORTUNITY
TWO SUITES TOTALING 4,920 SF

HOLGATE SQUARE

1762 AIRPORT WAY S
SEATTLE, WASHINGTON

2,460 - 4,920 SF AVAILABLE
\$1,476,000 - \$2,880,000



NEWMARK

MORGAN RICHEY, SIOR
Managing Director
425.362.1409
morgan.richey@nrmk.com

EVAN LUGAR
Senior Managing Director
425.362.1403
evan.lugar@nrmk.com

FOR SALE | INDUSTRIAL CONDO
OWNER USER OPPORTUNITY
TWO SUITES TOTALING 4,920 SF

HOLGATE SQUARE

1762 AIRPORT WAY S | SEATTLE, WASHINGTON

BUILDING DETAILS

- Total Available : 2,460 - 4,920 SF
- Two-Story Flex
- Clear Height : 20'
- Loading : Grade Level Doors
- Available individually as condos
- Available combined as standalone tax parcel
- Two (2) dedicated parking spaces each



NEWMARK

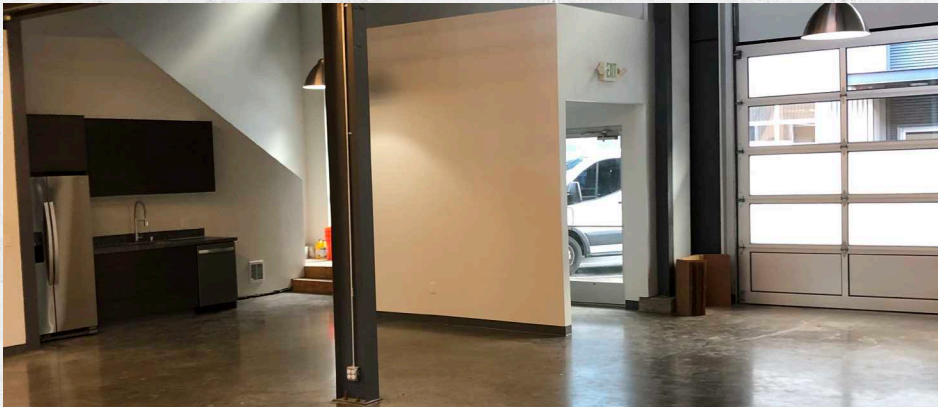
MORGAN RICHEY, SIOR
Managing Director
425.362.1409
morgan.richey@nmrk.com

EVAN LUGAR
Senior Managing Director
425.362.1403
evan.lugar@nmrk.com

FOR SALE | INDUSTRIAL CONDO
OWNER USER OPPORTUNITY
TWO SUITES TOTALING 4,920 SF

HOLGATE SQUARE

PHOTOS & RENDERINGS



NEWMARK

MORGAN RICHEY, SIOR
Managing Director
425.362.1409
morgan.richey@nmrk.com

EVAN LUGAR
Senior Managing Director
425.362.1403
evan.lugar@nmrk.com

FOR SALE | INDUSTRIAL CONDO
OWNER USER OPPORTUNITY
TWO SUITES TOTALING 4,920 SF

HOLGATE SQUARE

BUILDING HIGHLIGHTS

- Prime opportunity to own a compact commercial space in South Seattle.
- Situated along Airport Way S, just minutes from Seattle's CBD and bustling South Seattle markets.
- Direct access to I-5, I-90, and the West Seattle Bridge enhances connectivity.
- The space's layout, location, and accessibility support a wide range of potential uses.



NEWMARK

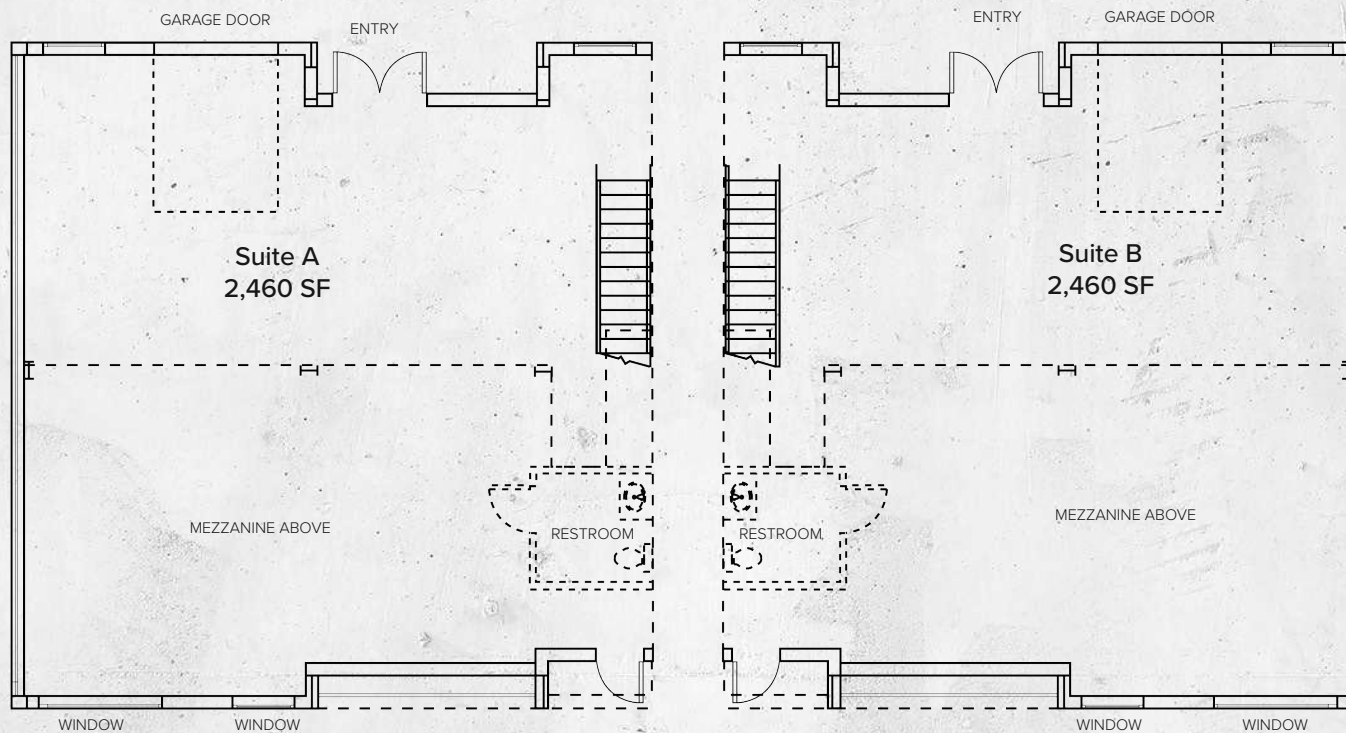
MORGAN RICHEY, SIOR
Managing Director
425.362.1409
morgan.richey@nmrk.com

EVAN LUGAR
Senior Managing Director
425.362.1403
evan.lugar@nmrk.com

FOR SALE | INDUSTRIAL CONDO
OWNER USER OPPORTUNITY
TWO SUITES TOTALING 4,920 SF

HOLGATE SQUARE

FLOOR PLAN



* Suites can be sold together or separate

NEWMARK

MORGAN RICHEY, SIOR
Managing Director
425.362.1409
morgan.richey@nmrk.com

EVAN LUGAR
Senior Managing Director
425.362.1403
evan.lugar@nmrk.com

FOR SALE | INDUSTRIAL CONDO
OWNER USER OPPORTUNITY
TWO SUITES TOTALING 4,920 SF

HOLGATE SQUARE



NEWMARK

MORGAN RICHEY, SIOR
Managing Director
425.362.1409
morgan.richey@nmrk.com

EVAN LUGAR
Senior Managing Director
425.362.1403
evan.lugar@nmrk.com

HOLGATE SQUARE

1762 AIRPORT WAY S | SEATTLE, WASHINGTON

MORGAN RICHEY, SIOR
Managing Director
425.362.1409
morgan.richey@nmrk.com

EVAN LUGAR
Senior Managing Director
425.362.1403
evan.lugar@nmrk.com

NEWMARK

The distributor of this communication is performing acts for which a real estate license is required. The information contained herein has been obtained from sources deemed reliable but has not been verified and no guarantee, warranty or representation, either express or implied, is made with respect to such information. Terms of sale or lease and availability are subject to change or withdrawal without notice. 18-1023