

SEATAC OFFICE-FLEX BUILDING

FOR SALE | 19119 16TH AVE S, SEATAC, WA



CHRIS HUGHES

+1 206 331 1945

Chris.Hughes@jll.com

TRISITY NGUYEN

+1 206 371 2121

Trisity.Nguyen@jll.com



19119 16TH AVE S, SEATAC

PROMINENT FLEX OFFICE BUILDING IN SEATAC.



27,794 SF Total



Exterior deck on the
2nd floor



3 floor, stand-alone vacant building



Training room and boardroom
on upper floors



Warehouse space with
2 dock high loading doors



Kitchenette, restrooms, and
IT/server room on every floor



1.5 acre fenced and secured site



1 elevator servicing all 3 floors



109 parking stalls (covered/uncovered)



Telecommunication fiber
carrier: Lumen



24/7 interior and exterior security
surveillance with cameras at exit points



On-site backup generator
(Kohler, Diesel powered, 200kw, 480v)

AVAILABLE FOR SALE

The information contained herein has been given to us by the owner or sources which we deem reliable. We have no reason to doubt its accuracy, but we do not guarantee it. Prospective tenants/buyers should carefully verify all information contained herein.



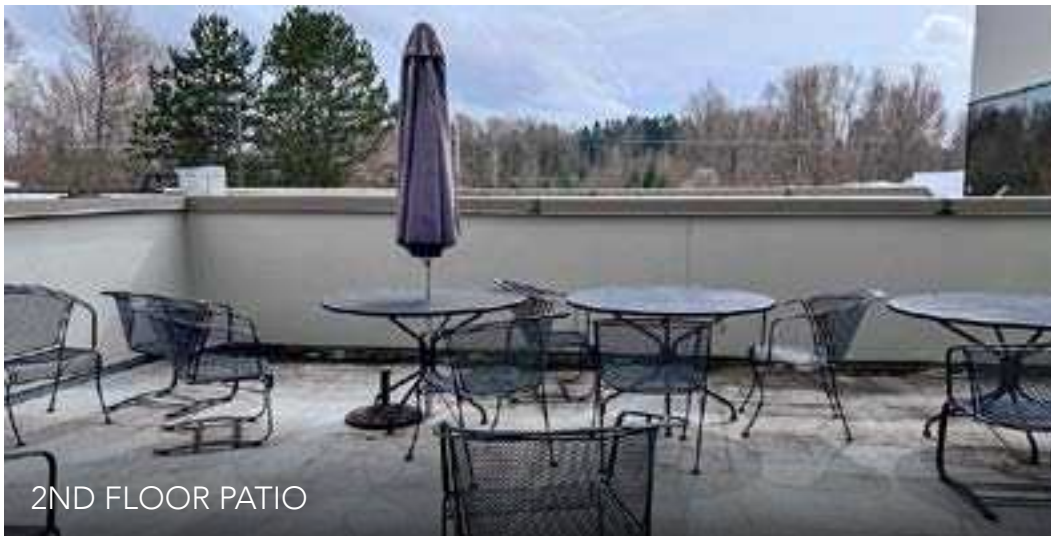
BUILDING LOBBY



2ND FLOOR TRAINING ROOM (SEATS 40)



KITCHENETTE AVAILABLE ON EVERY FLOOR



2ND FLOOR PATIO



2 DOCK HIGH DOORS WITH 1 LOAD-LEVELER

AVAILABLE FOR SALE

The information contained herein has been given to us by the owner or sources which we deem reliable. We have no reason to doubt its accuracy, but we do not guarantee it. Prospective tenants/buyers should carefully verify all information contained herein.

SITE PLAN



SECURED & FENCED LOT

109

PARKING STALLS

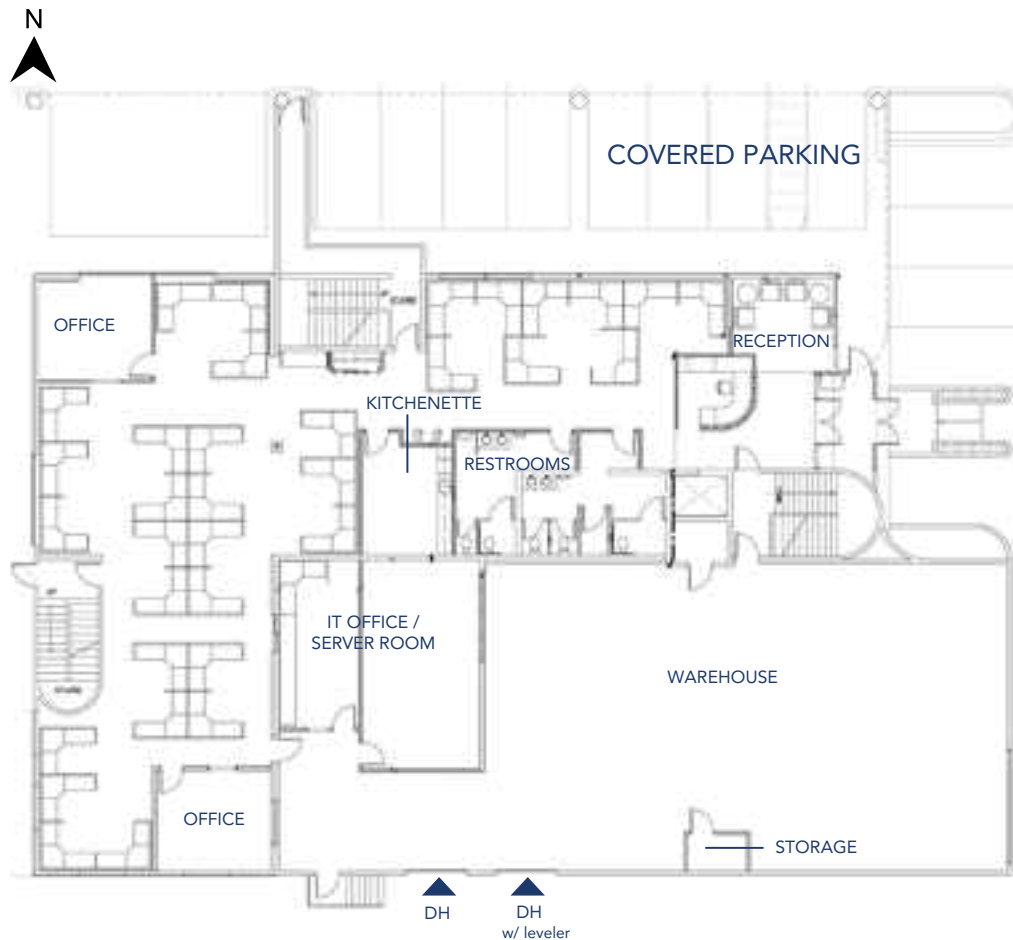
(17 COVERED / 92 UNCOVERED)



AVAILABLE FOR SALE

The information contained herein has been given to us by the owner or sources which we deem reliable. We have no reason to doubt its accuracy, but we do not guarantee it. Prospective tenants/buyers should carefully verify all information contained herein.

FIRST FLOOR



9,265 RSF

5,233 RSF OFFICE / 4,032 RSF WAREHOUSE

2
PRIVATE OFFICES

34
SEATS

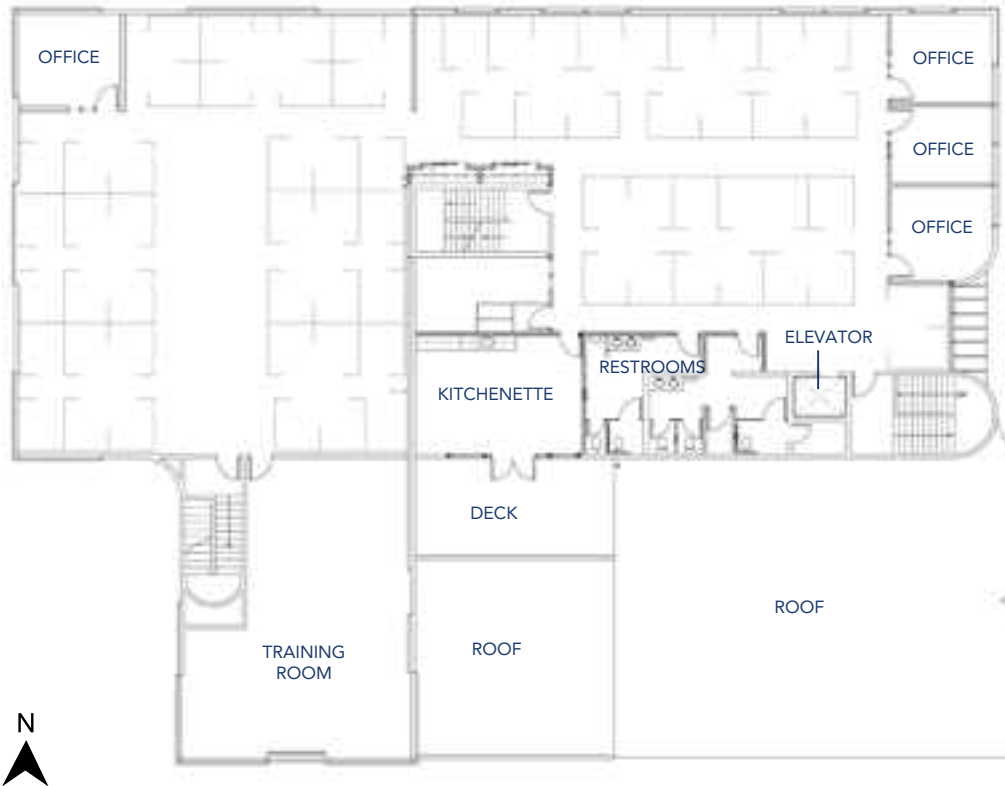
1
KITCHENETTE

1
SERVER ROOM

2
DOCK HIGH DOORS
WITH 1 LOAD-
LEVELER



SECOND FLOOR



9,265 RSF

OFFICE AVAILABLE

4

PRIVATE OFFICES

40

SEATS

1

TRAINING ROOM

1

KITCHENETTE

1

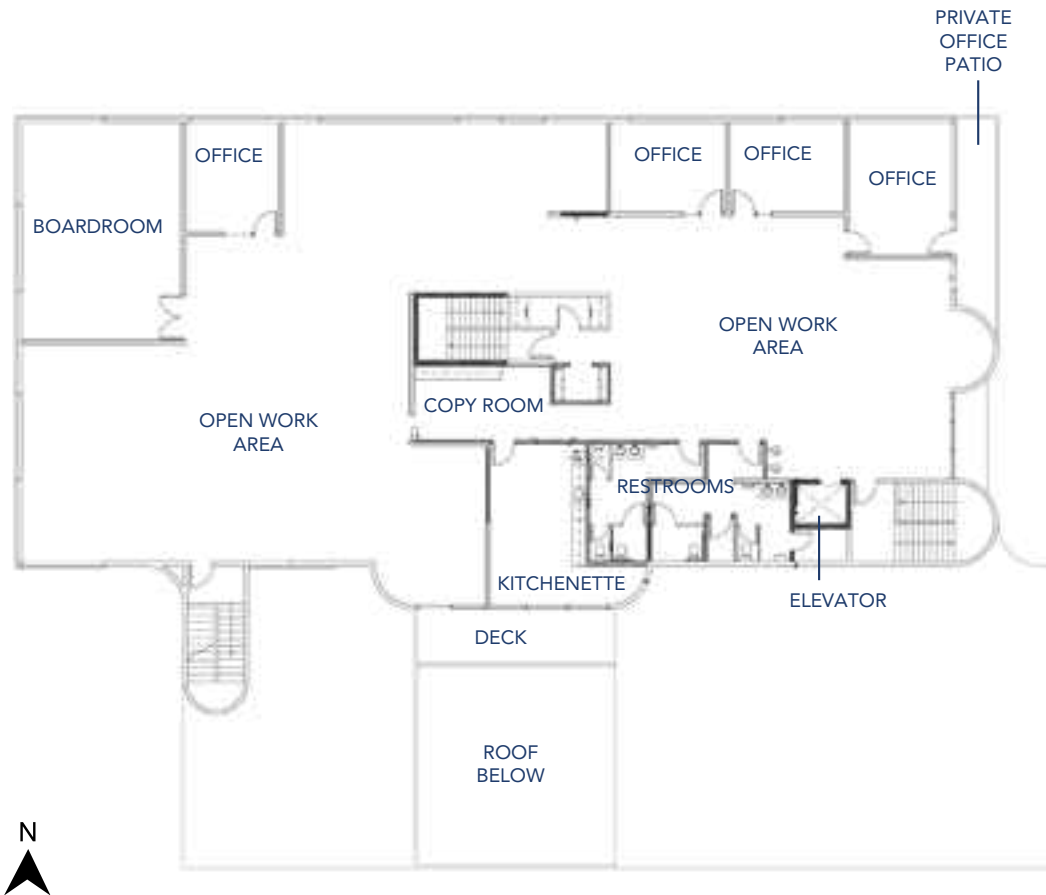
SERVER ROOM

1

LARGE PATIO



THIRD FLOOR



9,264 RSF

OFFICE AVAILABLE

5

PRIVATE OFFICES

Open

WORK AREA

1

COPY ROOM

1

KITCHENETTE

1

SERVER ROOM

1

BOARDROOM

1

PRIVATE DECK



AVAILABLE FOR SALE

The information contained herein has been given to us by the owner or sources which we deem reliable. We have no reason to doubt its accuracy, but we do not guarantee it. Prospective tenants/buyers should carefully verify all information contained herein.

19119 16TH AVE S, SEATAC

CENTRALLY LOCATED

Close proximity to major arterial roads with convenient access to I-5, I-405, highways 99, 518, and 509.





Broker contact info

CHRIS HUGHES

+1 206 331 1945

Chris.Hughes@jll.com

TRISITY NGUYEN

+1 206 371 2121

Trisity.Nguyen@jll.com

Although information has been obtained from sources deemed reliable, JLL does not make any guarantees, warranties or representations, express or implied, as to the completeness or accuracy as to the information contained herein. Any projections, opinions, assumptions or estimates used are for example only. There may be differences between projected and actual results, and those differences may be material. JLL does not accept any liability for any loss or damage suffered by any party resulting from reliance on this information. If the recipient of this information has signed a confidentiality agreement with JLL regarding this matter, this information is subject to the terms of that agreement. ©2025 Jones Lang LaSalle Brokerage, Inc. All rights reserved.

