

EVERGREEN PLAZA

FULLY LEASED INVESTMENT PROPERTY BUILT IN 2008

701 NE 136TH AVE, VANCOUVER, WA 98684



Marcus & Millichap
THE VARA GROUP

INVESTMENT SALES TEAM

RJ VARA

First Vice President Investments
206.584.6195
rj.vara@marcusmillichap.com

MATTHEW HERMAN

Senior Associate
206.790.5505
matthew.herman@marcusmillichap.com

CAPITAL MARKETS

RAY ALLEN

Senior Vice President
206.826.5678
rallen@ipausa.com

UNDERWRITING INQUIRIES

COLIN COCKBAIN

Financial Analyst
206.504.4818
colin.cockbain@marcusmillichap.com

Marcus & Millichap
THE VARA GROUP

TABLE OF CONTENTS

01.	EXECUTIVE OVERVIEW	3
02.	PROPERTY SUMMARY	8
03.	FINANCIAL SUMMARY	14
04.	MARKET OVERVIEW	18



01.

EXECUTIVE OVERVIEW

- INVESTMENT OVERVIEW
- INVESTMENT HIGHLIGHTS

INVESTMENT OVERVIEW



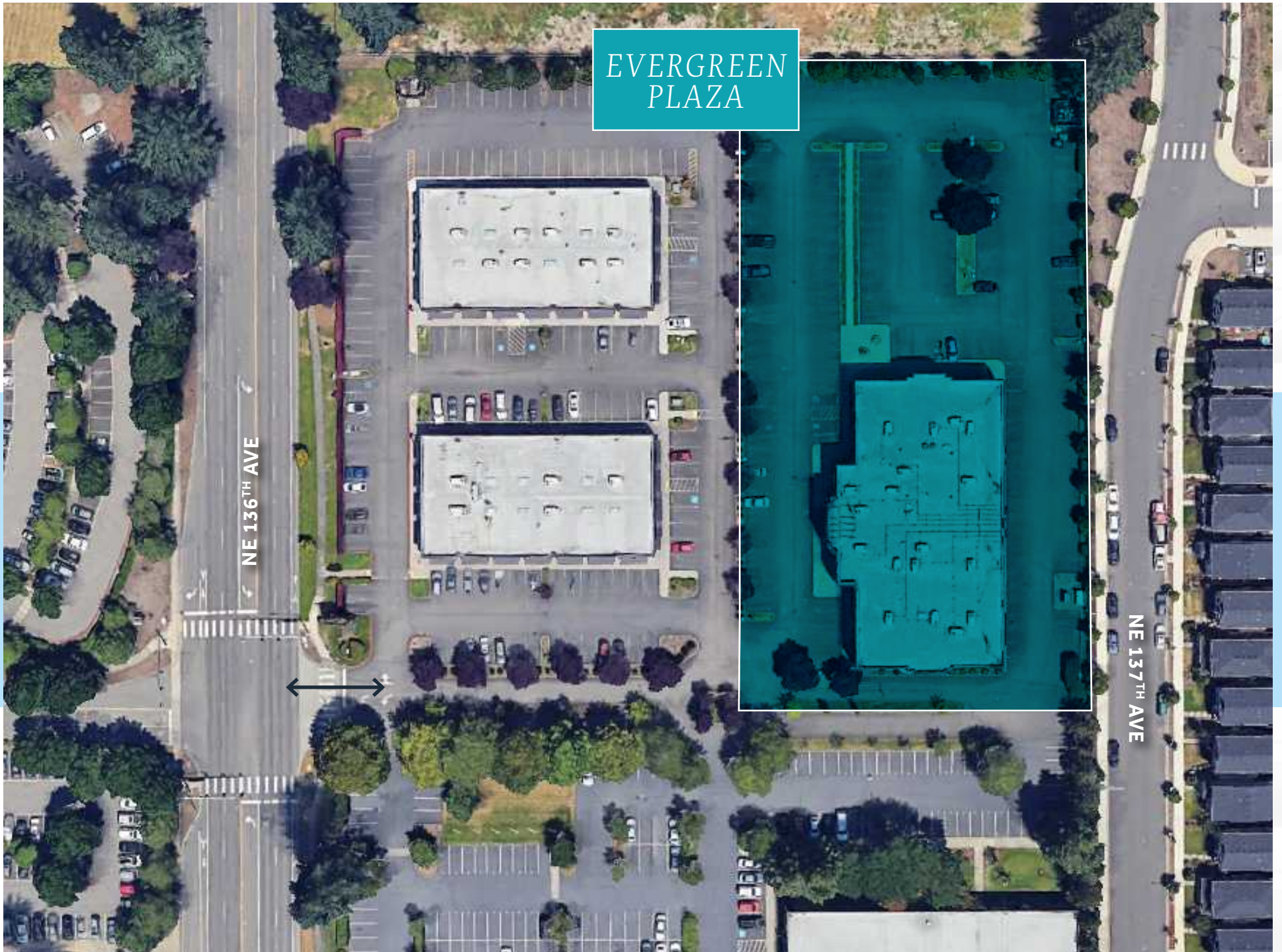
THE VARA GROUP is excited to present the sale offering for Vancouver Evergreen Plaza, a 33,672 SF Class A office property located in Vancouver, WA. Built in 2008, the property sits on a 2.07-acre lot, providing 167 parking stalls and boasting a parking ratio of 4.96/1,000 SF.

Evergreen Plaza is 100% occupied by three tenants, ensuring minimal management responsibilities for ownership. Two tenants benefit from scheduled rent increases, while Regus' profit-sharing structure offers additional upside potential.

Strategically positioned in Vancouver's Cascade Park submarket, the property is just minutes from downtown Portland and benefits from the area's consistent population growth. Immediate access to I-205, SR-500, I-5, and SR-14 enhances connectivity, while nearby residential expansion further supports long-term demand.

Offered at less than 50% of replacement cost, the property presents an attractive basis well below market standards. This significant discount provides investors the flexibility to enhance the asset through strategic improvements, driving higher rents and long-term value. Alternatively, the low cost basis enables competitive leasing strategies to minimize vacancies and maximize occupancy for years to come.

EVERGREEN PLAZA



INVESTMENT HIGHLIGHTS



FULLY LEASED INVESTMENT

At 100% occupancy, the Property produces immediate cash flow at an attractive spread over borrowing costs.



QUALITY 2008 CONSTRUCTION

Steel frame, masonry construction minimizes capital expenditure risks and keeps insurance costs lower than older buildings.



UNIQUE REGUS COWORKING TENANT

Since operation began in mid-2023, Regus has steadily increased occupancy to 85%. The profit-sharing lease structure means operations income grows as their occupancy improves.



SIGNIFICANT RENTAL UPSIDE

Along with scheduled rent increases in the other two tenants, Regus is currently paying roughly 50% below market rents. Upon expiration, an investor will have the opportunity to re-tenant their space at market rents, significantly improving cash flow.

INVESTMENT HIGHLIGHTS



EASE OF MANAGEMENT

The property is occupied by three tenants, which provides ease of management and the possibility for self-management, further mitigating operating expenses.



BELOW REPLACEMENT COST

The property is currently priced at less than 50% of replacement cost. This low basis allows for further improvements to drive higher rents or competitive leasing to minimize vacancies.



RAPIDLY GROWING SUBMARKET

Vancouver's population has grown by 3.6% since 2020 due in large part to the region's business and tax friendly nature.



INCOME TAX FREE STATE

Washington state is an income tax free state.

02.

PROPERTY SUMMARY

- PROPERTY OVERVIEW
- FLOOR PLANS
- TENANT OVERVIEW

PROPERTY OVERVIEW

Pricing

List Price **\$4,840,000**

Price Per Square Foot \$143.74

Price Per Land SF \$53.68

Location

Property Street Address 701 NE 136th Ave

City, State, Zip Vancouver, WA 98684

Parcel Number(s) 165165-028

Product Type Office

Zoning Office Commercial Industrial (OCI)

Occupancy 100%

Building Size

Rentable Building Area 33,672 SF

Land Area 90,169 SF (2.07 Acres)

Construction Overview

Construction Steel Frame & Masonry

Flooring Mixed

Sprinklers Wet

Roof Torchdown

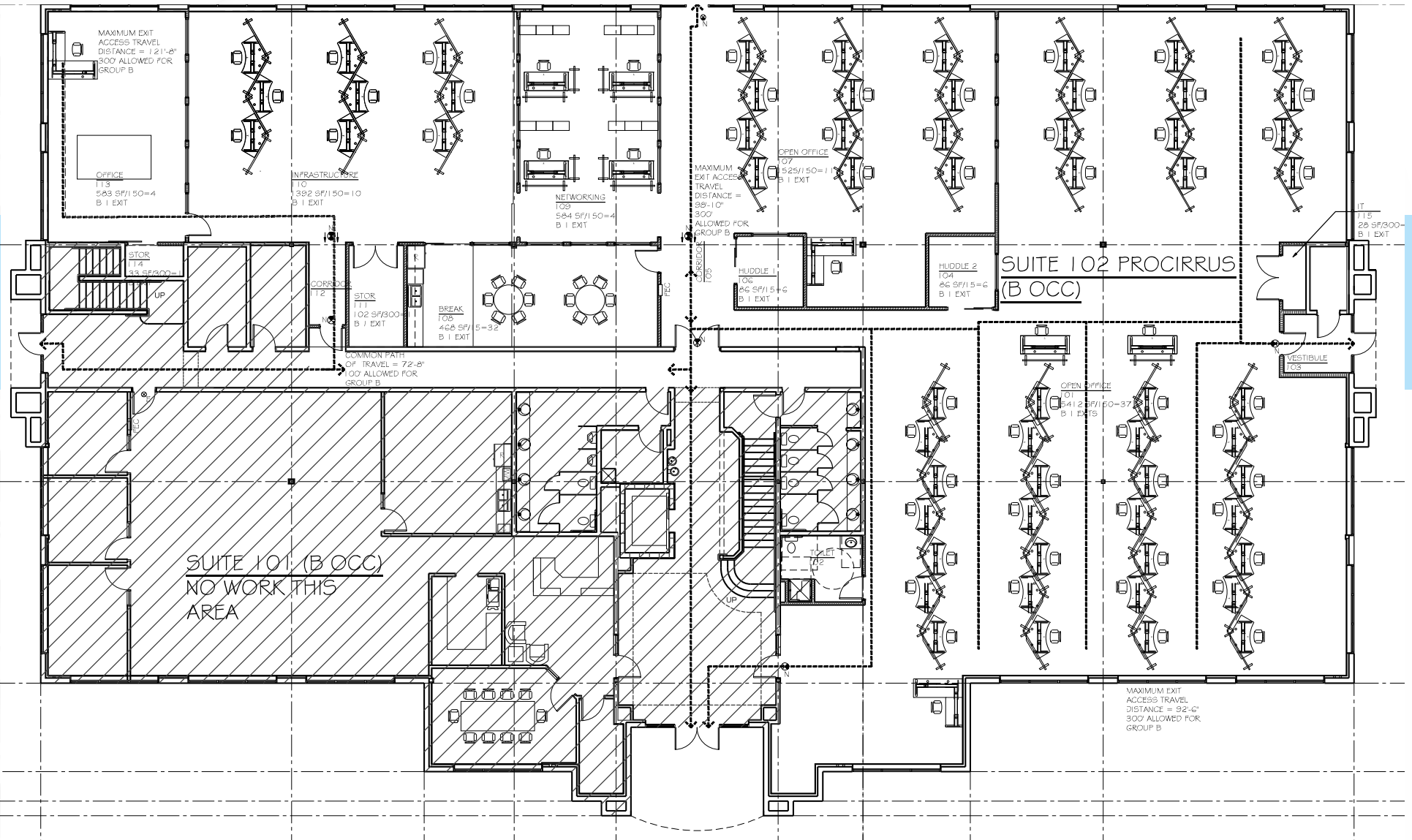
Building Features

Year Built 2008

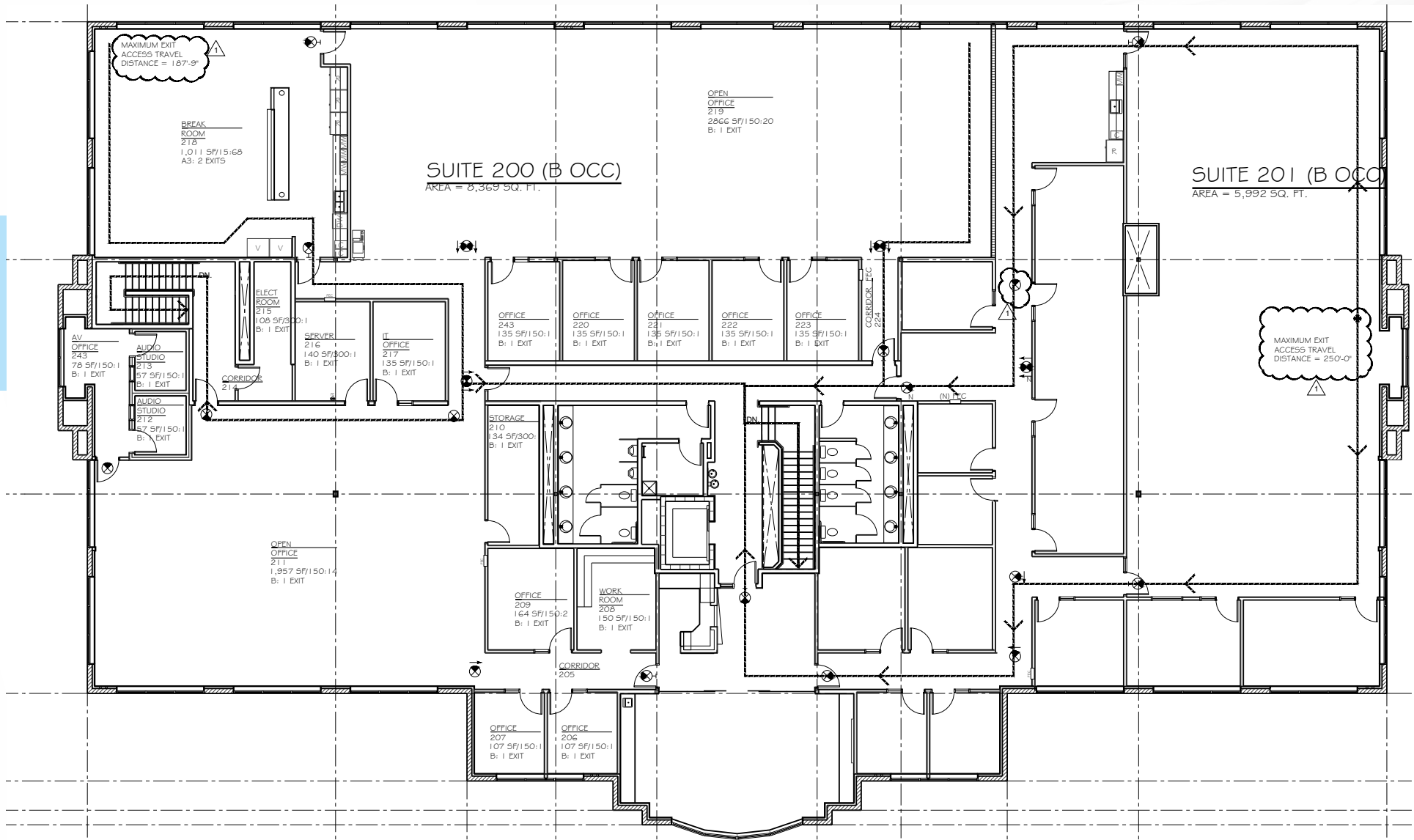
Parking 167 Stalls (4.96/1,000 SF)



FIRST FLOOR PLAN



SECOND FLOOR PLAN



REGUS BUILDOUT



TENANT OVERVIEW



REGUS

Regus is a global provider of flexible office spaces, offering co-working, private offices, and meeting rooms in prime business locations. Catering to freelancers, startups, and corporations, Regus provides scalable workspace solutions with short-term and long-term lease options. The company operates under IWG plc, maintaining a strong presence in major markets worldwide.

Suite: 201

Occupied SF: 17,960 SF

Lease Expiration: 10/28/2032



PRO CIRRUS TECHNOLOGIES

Pro Cirrus Technologies provides secure, cloud-based IT solutions tailored for professional service industries, including healthcare, legal, and finance. Their fully managed cloud platform enhances security, mobility, and efficiency, allowing businesses to access critical applications from anywhere with enterprise-level protection.

Suite: 100

Occupied SF: 12,320 SF

Lease Expiration: 4/30/2030



PACIFIC BATH

Pacific Bath specializes in high-quality bathroom remodeling, offering premium Kohler walk-in baths, showers, and accessories. Focused on luxury, safety, and accessibility, the company provides expert installation and exceptional customer service across multiple West Coast markets.

Suite: 101

Occupied SF: 3,392 SF

Lease Expiration: 9/30/2025

04.

MARKET OVERVIEW

- OFFICE MARKET OVERVIEW
- REGIONAL MAP & DRIVE TIMES
- NEARBY DEVELOPMENTS

OFFICE MARKET OVERVIEW



CITY OF VANCOUVER OFFICE STATS

12M SF In Inventory

6.6% Vacancy Rate

3.5% Rent Growth Year-Over-Year

165K SF Under Construction

CASCADE PARK OFFICE SUBMARKET

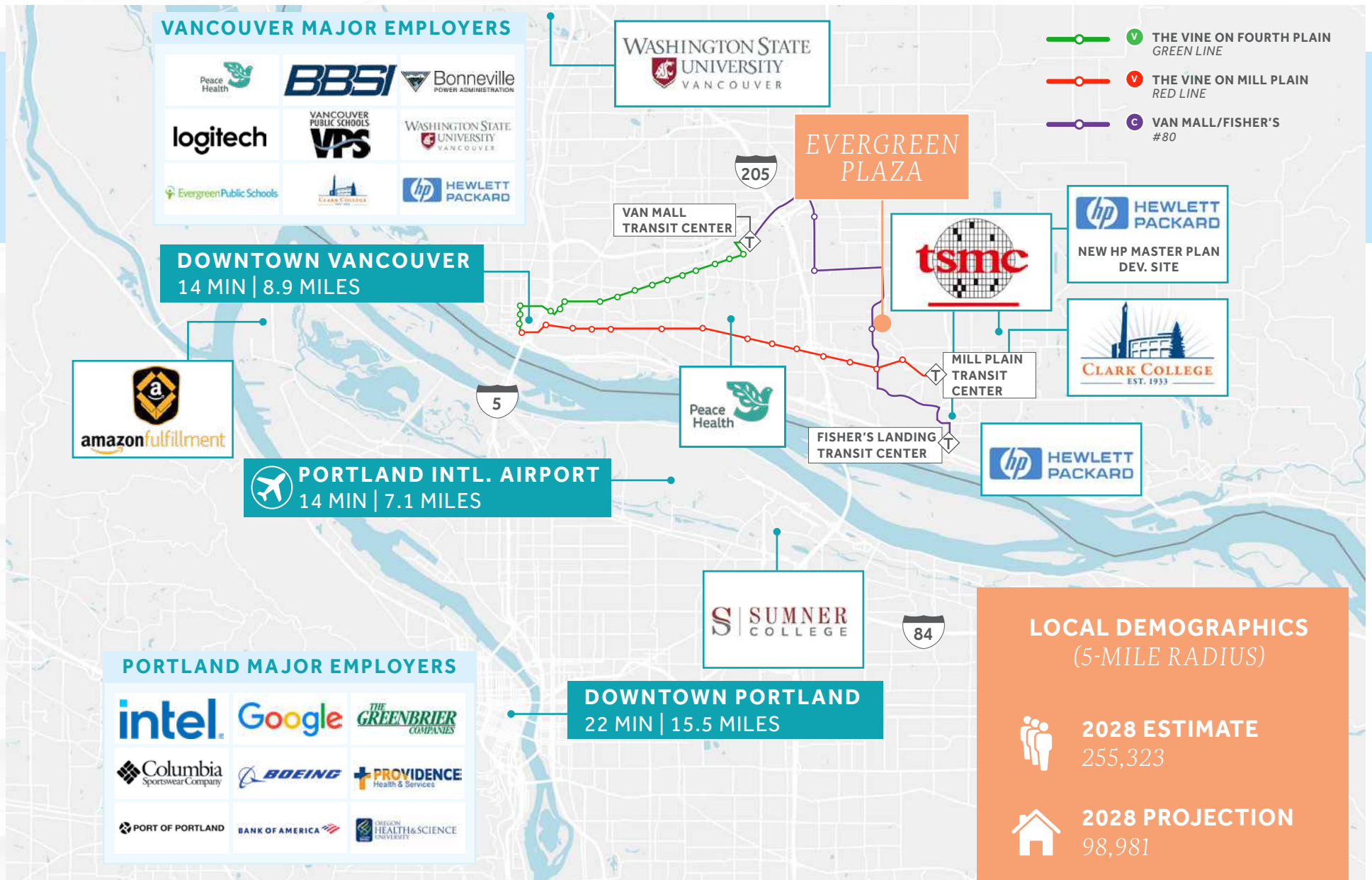
3.4M SF In Inventory

9.67% Higher Submarket Rents Compared to Overall Market

3.6% Rent Growth Year-Over-Year

0 SF Under Construction

REGIONAL MAP & DRIVE TIMES



NEARBY DEVELOPMENTS



VANCOUVER INNOVATION CENTER

The City of Vancouver is reviewing a revised Mixed Use Master Plan and Development Agreement for a 179-acre site along S.E. 34th Street, east of 192nd Avenue. Originally approved in 2021, the plan included improvements to a 700,000-square-foot industrial building alongside new residential, commercial, and mixed-use developments, as well as a plaza, forested park, and school. The revised plan retains the original framework but increases multi-family housing to 1,800 units, expands commercial and industrial space, and includes more open space.



HP MASTER PLAN

The HP Master Plan is a development project led by Hewlett-Packard to transform a 68-acre site in Vancouver into a mixed-use campus. The plan includes up to 1.5 million square feet for offices, research facilities, and other uses, along with parking, landscaping, and site improvements. Currently under city review, the project is set to drive significant business and population growth in the region.



THE HEIGHTS DISTRICT

The Heights District is a redevelopment project in Vancouver aimed at transforming the former Tower Mall area into a vibrant, walkable neighborhood. The plan includes mixed-use development with housing, retail, parks, schools, and improved transit access. Key features include a civic plaza, a neighborhood park, and "The Grand Loop," a central pathway connecting the district. Development teams have been approved, with construction set to begin in 2026.

STRONG TREND IN POPULATION GROWTH



CLARK COUNTY'S GROWTH, ECONOMY AND HOUSING MARKET ATTRACT OUTSIDE INVESTORS — AND NEW RESIDENTS



WHILE THE PORTLAND AREA CONTINUES TO LOSE RESIDENTS, CLARK COUNTY'S POPULATION IS GROWING

SIGNIFICANT INVESTMENTS IN INFRASTRUCTURE



VANCOUVER COUNCIL OKS VAN MALL MIXED-USE DEVELOPMENT PLAN; FOOD CART POD, TAPROOM, ASSISTED LIVING FACILITY TO BE BUILT IN PHASES



PORT OF VANCOUVER'S NEW TERMINAL 1 DOCK JUST ONE OF MANY PROJECTS IN PROGRESS AT AREA PORTSNEWS



DEVELOPMENT PROJECTS -THE CITY OF VANCOUVER, WA



CONFIDENTIALITY & DISCLAIMER

The information contained in this Offering Memorandum is proprietary and strictly confidential. It is intended to be reviewed only by the party receiving it from Marcus & Millichap and should not be made available to any other person or entity without the written consent of Marcus & Millichap. This Offering Memorandum has been prepared to provide summary, unverified information to prospective purchasers, and to establish only a preliminary level of interest in the subject property. The information contained herein is not a substitute for a thorough due diligence investigation. Marcus & Millichap has not made any investigation, and makes no warranty or representation, with respect to the income or expenses for the subject property, the future projected financial performance of the property, the size and square footage of the property and improvements, the presence or absence of contaminating substances, PCB's or asbestos, the compliance with State and Federal regulations, the physical condition of the improvements thereon, or the financial condition or business prospects of any tenant, or any tenant's plans or intentions to continue its occupancy of the subject property.

The information contained in this Offering Memorandum has been obtained from sources we believe to be reliable; however, Marcus & Millichap has not verified, and will not verify, any of the information contained herein, nor has Marcus & Millichap conducted any investigation regarding these matters and makes no warranty or representation whatsoever regarding the accuracy or completeness of the information provided. All potential buyers must take appropriate measures to verify all of the information set forth herein.

NON-ENDORSEMENT NOTICE

Marcus & Millichap is not affiliated with, sponsored by, or endorsed by any commercial tenant or lessee identified in this Offering Memorandum. The presence of any corporation's logo or name is not intended to indicate or imply affiliation with, or sponsorship or endorsement by, said corporation of Marcus & Millichap, its affiliates or subsidiaries, or any agent, product, service, or commercial listing of Marcus & Millichap, and is solely included for the purpose of providing tenant lessee information about this listing to prospective customers.

ALL PROPERTY SHOWINGS ARE BY APPOINTMENT ONLY. PLEASE CONSULT YOUR MARCUS & MILLICHAP AGENT FOR MORE DETAILS.

This information has been secured from sources we believe to be reliable, but we make no representations or warranties, express or implied, as to the accuracy of the information. References to square footage or age are approximate. Buyer must verify the information and bears all risk for any inaccuracies. Marcus & Millichap is a service mark of Marcus & Millichap Real Estate Investment Services, Inc. © 2025 Marcus & Millichap. All rights reserved.

INVESTMENT SALES TEAM

RJ VARA

First Vice President Investments

206.584.6195

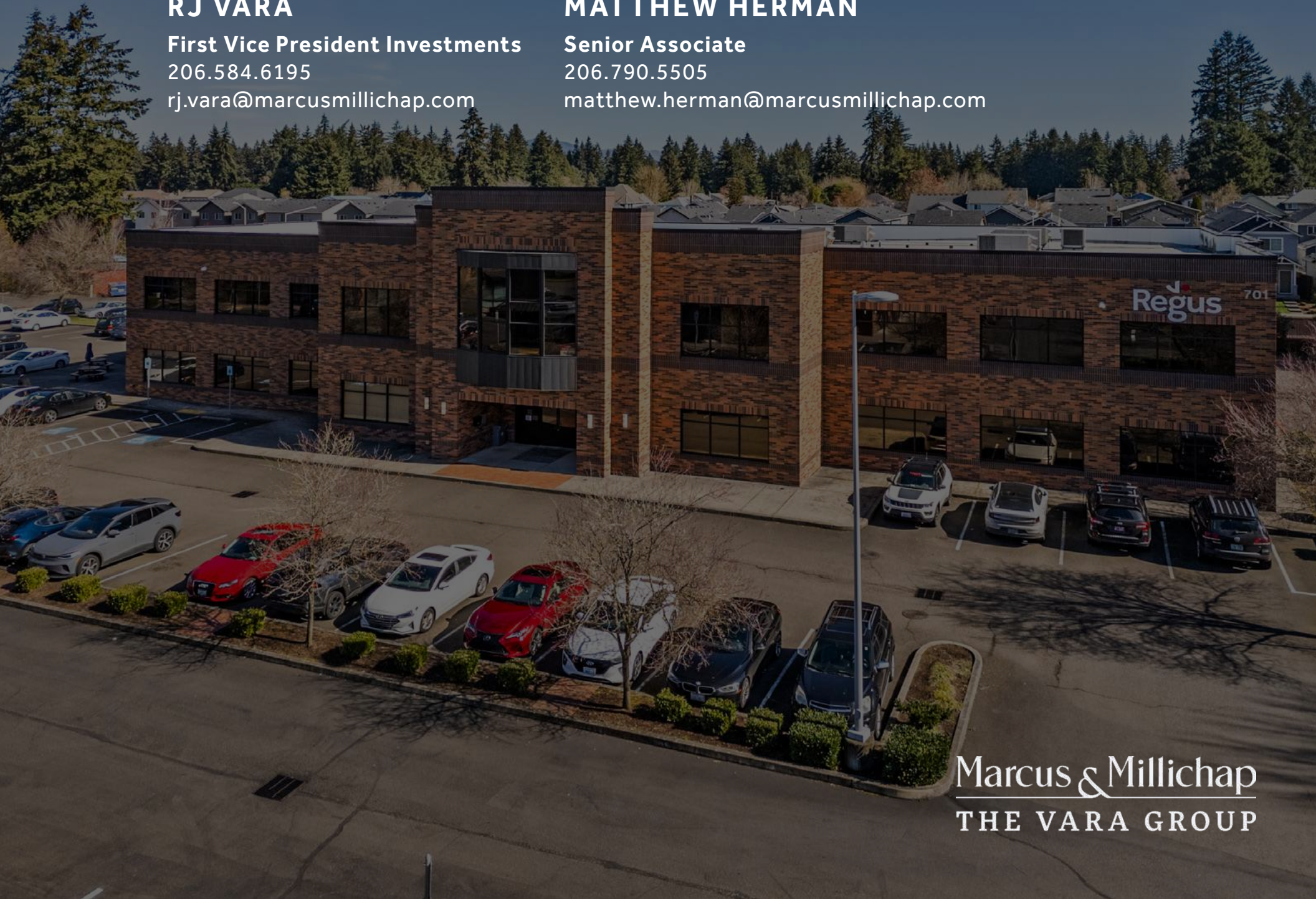
rj.vara@marcusmillichap.com

MATTHEW HERMAN

Senior Associate

206.790.5505

matthew.herman@marcusmillichap.com



Marcus & Millichap
THE VARA GROUP