



# 1626 21ST STREET, LEWISTON

PRIME CORNER LAND FOR SALE | 1622-1626 21ST STREET, LEWISTON, ID 83501

7,246 VPD

SOUTHWAY AVENUE

24,210 VPD

SITE

21ST STREET

17TH AVENUE

CONTACT

## DON CRAWFORD

208.660.1207

don@tokcommercial.com

## DREW ULRICK, SIOR

509.606.5055

drew@tokcommercial.com

## BRENNEN CRAWFORD

208.755.0920

brennen@tokcommercial.com

## DANNY DAVIS, CCIM

208.691.6003

danny@tokcommercial.com

HIGHLIGHTS

Nearly 1 acre of prime corner land

Ideal 21st Street location for QSR or Retail

High traffic counts with 24,210 VPD

DETAILS

<b>SUBMARKET:</b>	Lewiston
<b>LOT SIZE:</b>	0.913 Acres
<b>ZONING:</b>	C6
<b>PRICE:</b>	\$1,600,000

UPDATED: 6.18.2025

THIS PROPERTY IS EXCLUSIVELY MARKETING BY TOK INLAND NORTHWEST LLC DBA TOK COMMERCIAL

This information was obtained from sources believed reliable but cannot be guaranteed. Any opinions or estimates are used for example only.

TOKCOMMERCIAL.COM

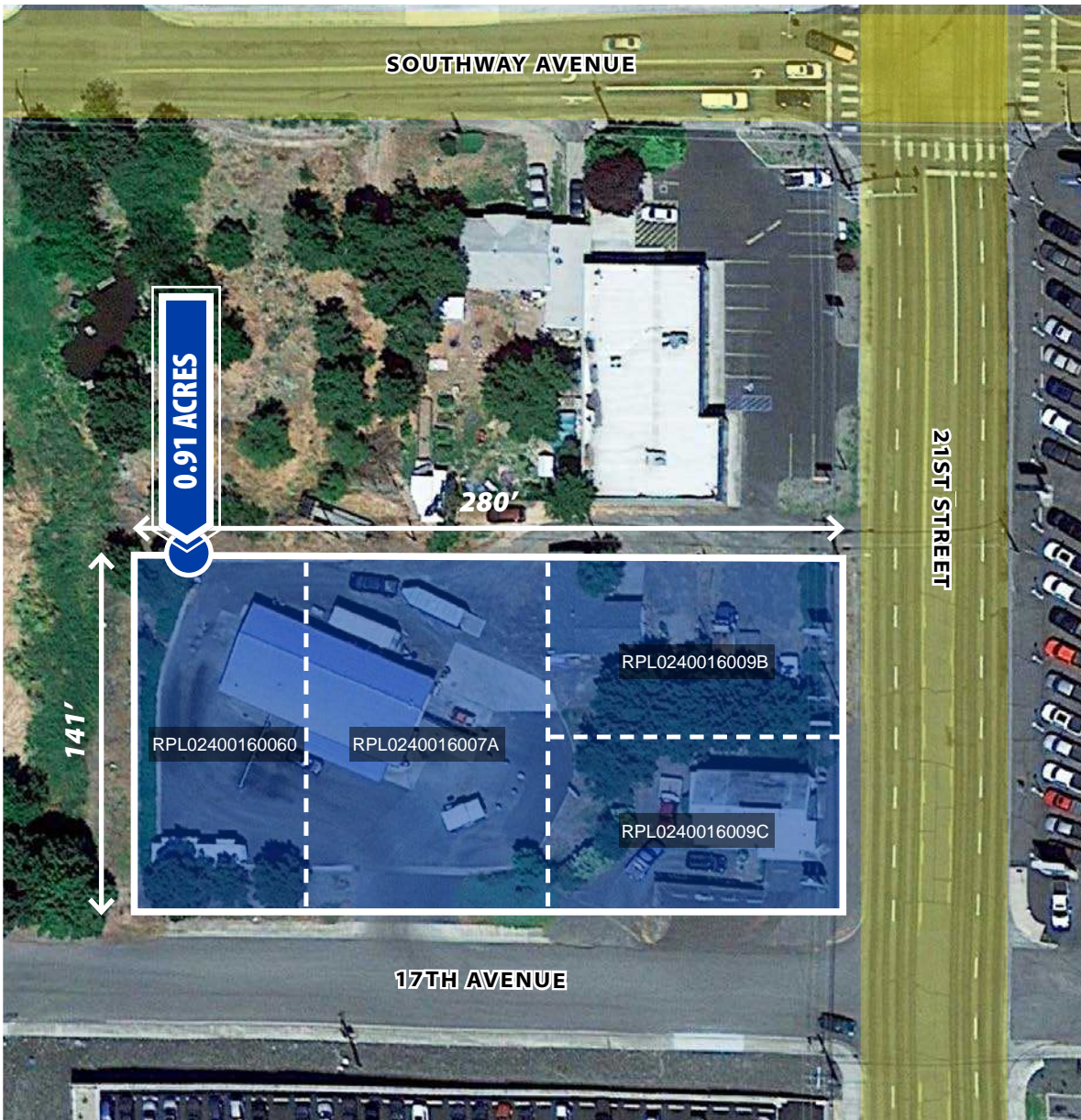


# 21ST STREET, LEWISTON

PRIME CORNER LAND FOR SALE

## ZONING DISTRICT C6 - REGIONAL COMMERCIAL ZONE

To encourage the establishment of areas for varied types of commercial uses and to meet the needs of the regional market area. Such uses shall be readily accessible from streets designated as principal or minor arterials as shown in the Lewiston Comprehensive Transportation Plan.



UPDATED: 6.18.2025

THIS PROPERTY IS EXCLUSIVELY MARKETING BY TOK INLAND NORTHWEST LLC DBA TOK COMMERCIAL

This information was obtained from sources believed reliable but cannot be guaranteed. Any opinions or estimates are used for example only.



# 21ST STREET, LEWISTON

LOCATED ON PRIMARY ARTERIAL





**TOK**  
COMMERCIAL

# 21ST STREET, LEWISTON

SURROUNDED BY HIGH TRAFFIC RETAILERS







UPDATED: 6.18.2025

THIS PROPERTY IS EXCLUSIVELY MARKETING BY TOK INLAND NORTHWEST LLC DBA TOK COMMERCIAL

This information was obtained from sources believed reliable but cannot be guaranteed. Any opinions or estimates are used for example only.

**TOK**COMMERCIAL.COM



# 21ST STREET, LEWISTON

LOCATED ON PRIMARY ARTERIAL

