

FOR SALE

TRAILS END AT BROOKDALE

1802 BROOKDALE RD E, TACOMA, WA 98445

BROOKDALE RD E

CHESNEY AVE E

LOT 1
25,424 SF

LOT 2
60,592 SF

LOT 3
15,650 SF

KIDDER.COM

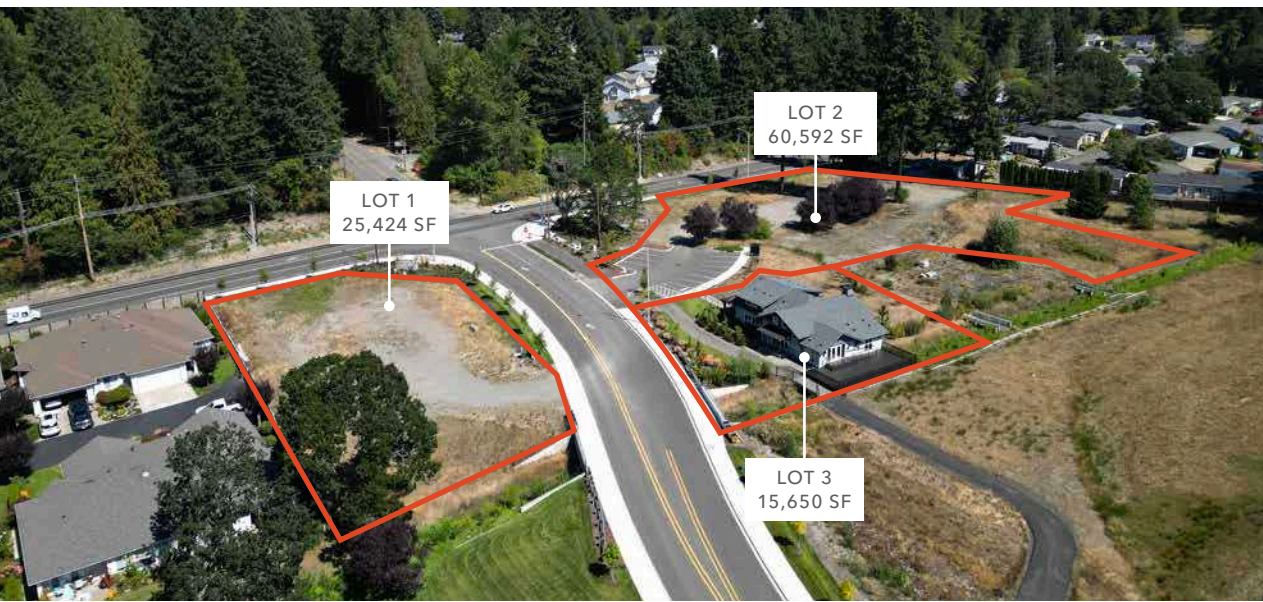
DEVELOPED BY

ICHIJO
Technological Homes

EXCLUSIVELY LISTED BY

km Kidder
Mathews

TRAILS END AT BROOKDALE



Property Highlights

Lot 1: 25,424 SF

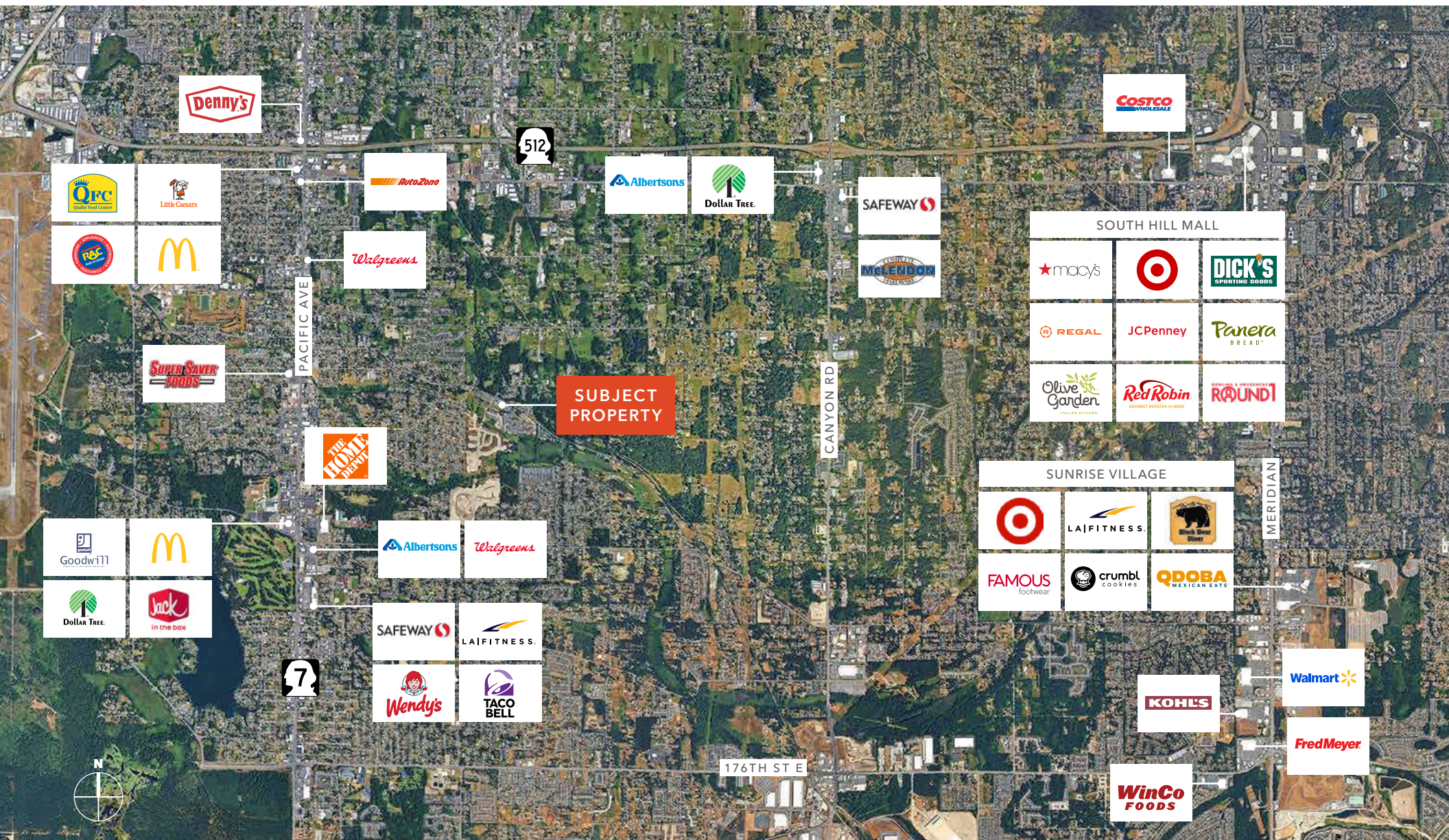
Lot 2: 60,592 SF

Lot 3: 15,650 SF

450 new single family homes by Ichijo
Technological Homes

Located in Tacoma and conveniently near JBLM
(Joint Base Lewis-McChord), PLU (Pacific Lutheran
University), and many local amenities

Views of Mt. Rainier



DEMOGRAPHICS

POPULATION

	5 Mins	10 Mins	15 Mins
2020 CENSUS	17,502	73,256	180,301
2010 CENSUS	16,110	66,315	156,109
2025 ESTIMATED	17,354	72,801	181,227
2030 PROJECTED	17,772	73,790	183,017

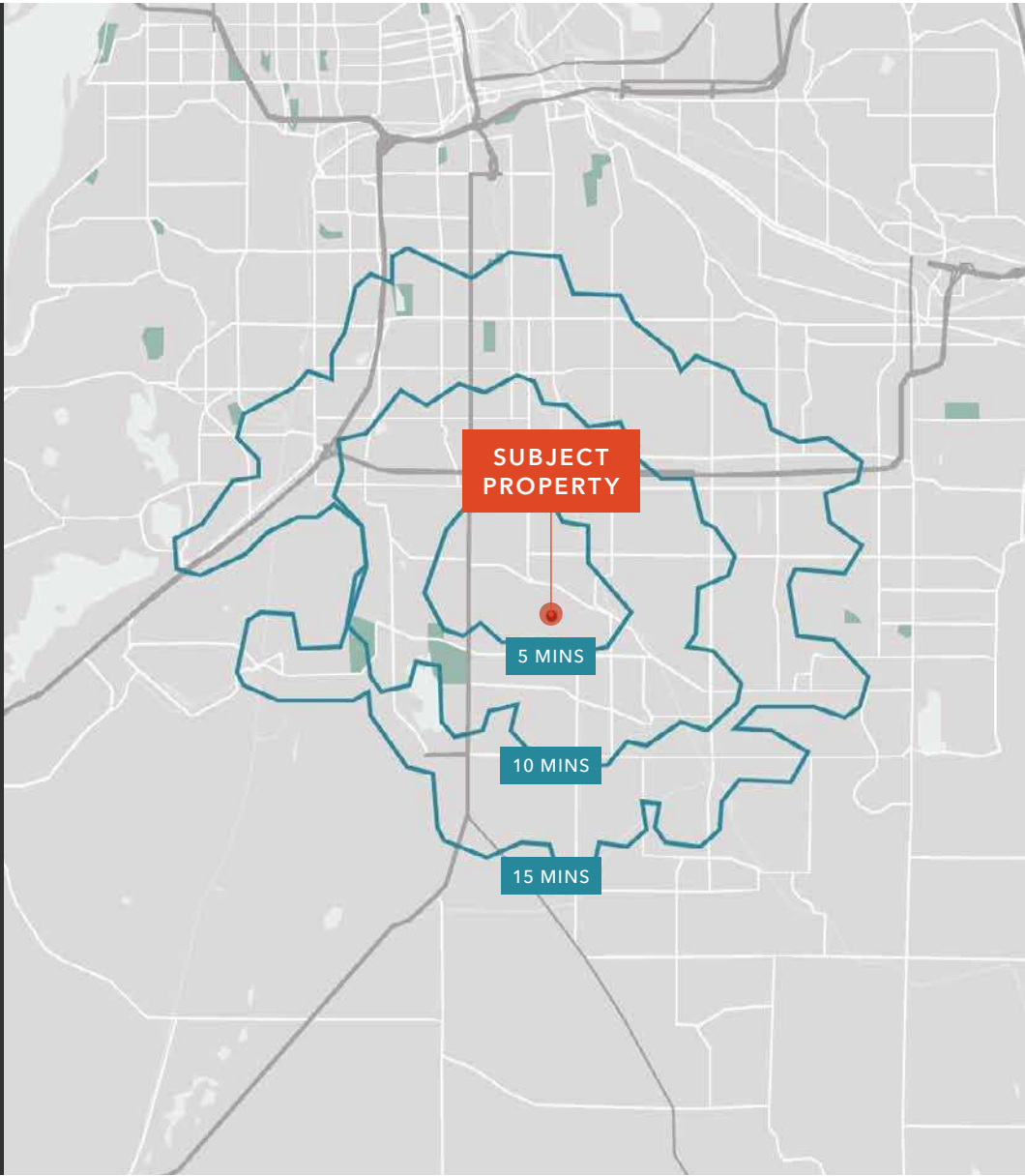
MEDIAN AGE & GENDER

	5 Mins	10 Mins	15 Mins
MEDIAN AGE	35.9	34.7	34.7
% FEMALE	50.1%	49.6%	49.9%
% MALE	49.9%	50.4%	50.1%

HOUSEHOLD INCOME

	5 Mins	10 Mins	15 Mins
2025 MEDIAN	\$92,495	\$87,063	\$89,456
2030 MEDIAN PROJECTED	\$92,738	\$86,983	\$89,238
2025 AVERAGE	\$110,628	\$107,757	\$111,874
2030 AVERAGE PROJECTED	\$110,339	\$106,973	\$110,929

Data Source: ©2025, Sites USA



TRAILS END AT BROOKDALE



Developed by



Exclusively listed by

BLAKE WEBER
Senior Vice President
206.898.1321
blake.weber@kidder.com

DON WHITTLES
Senior Vice President
253.208.2257
don.whittles@kidder.com

NED WHALEN
Senior Vice President
206.491.5998
ned.whalen@kidder.com

KIDDER.COM

This information supplied herein is from sources we deem reliable. It is provided without any representation, warranty, or guarantee, expressed or implied as to its accuracy. Prospective Buyer or Tenant should conduct an independent investigation and verification of all matters deemed to be material, including, but not limited to, statements of income and expenses. Consult your attorney, accountant, or other professional advisor. All Kidder Mathews designs are the sole property of Kidder Mathews. Branded materials and layouts are not authorized for use by any other firm or person.