



SALE

West Nob Hill Corner

2312 WEST NOB HILL BLVD.

Yakima, WA 98902

PRESENTED BY:

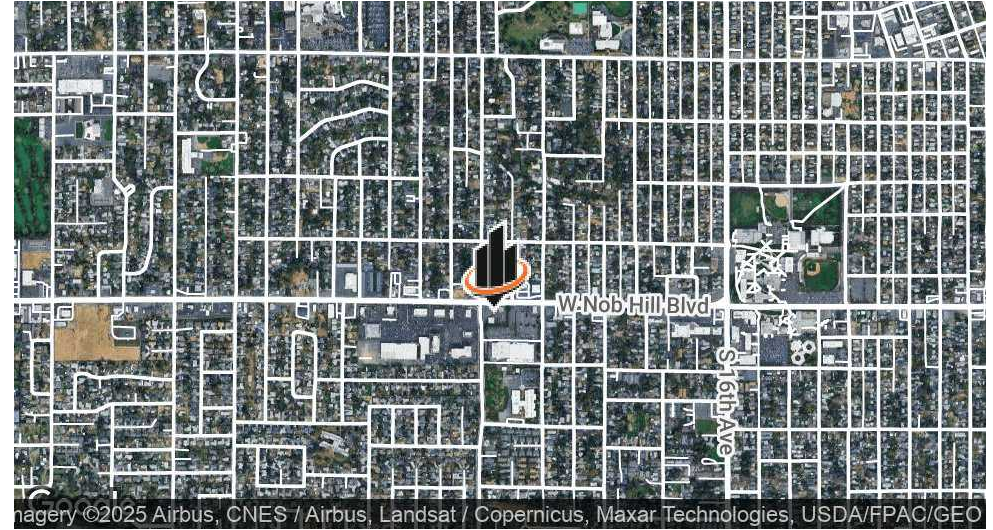
KEN DAVIS

O: 509.949.0860

ken.davis@svn.com



PROPERTY SUMMARY



OFFERING SUMMARY

SALE PRICE:	\$450,000
AVAILABLE SF:	22,823
LOT SIZE:	0.51 Acres
PRICE / ACRE:	\$882,353
ZONING:	B2
MARKET:	Yakima
APN:	181326-42051

PROPERTY OVERVIEW

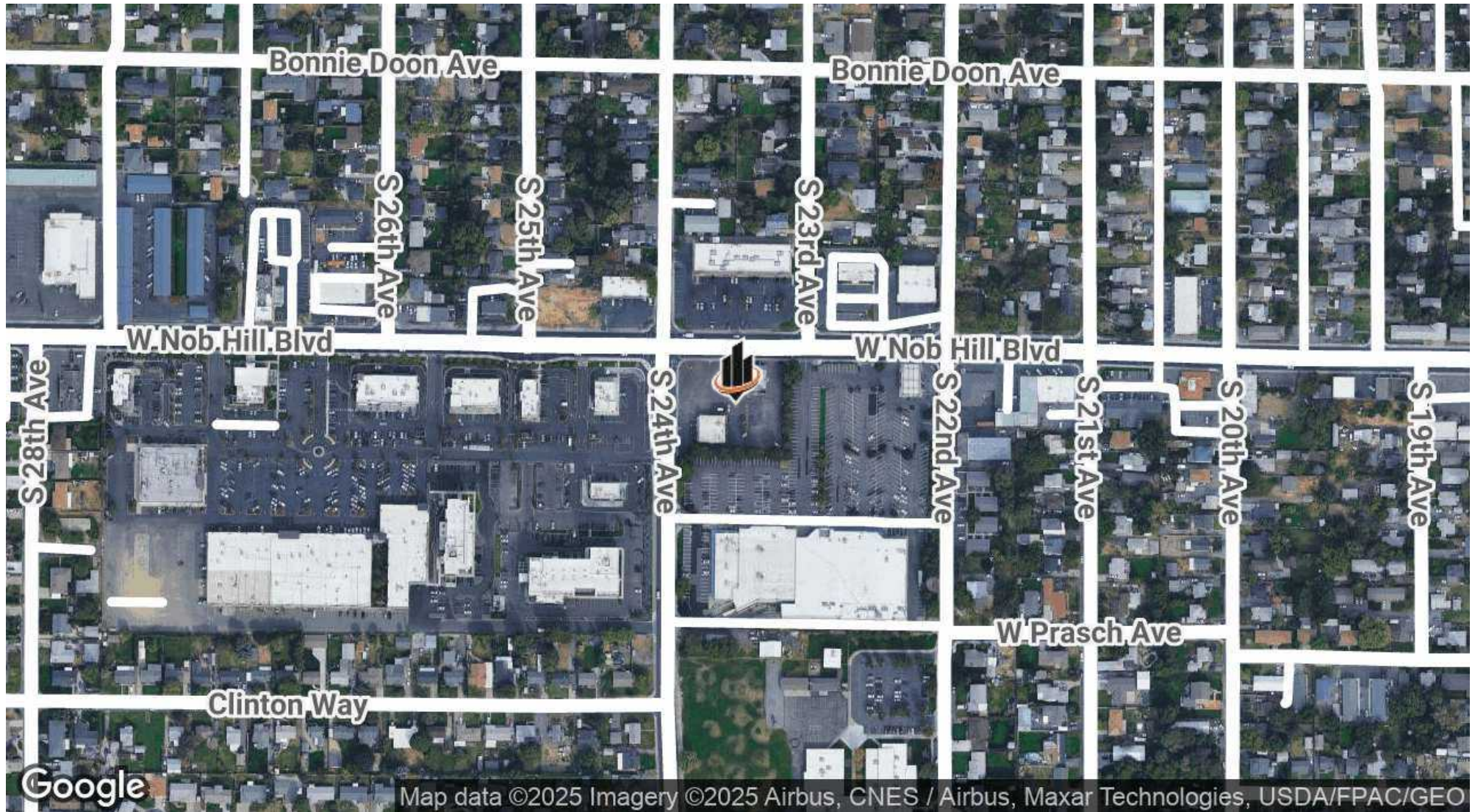
Outstanding corner lot ready for development! 22,823 square feet with all utilities at site., and located on the Southeast corner of the fully controlled intersection of 24th Avenue and West Nob Hill Blvd. in the heart of Yakima. Over 30,000 VPD at this intersection, and the lot is an outparcel of a Safeway/RiteAid anchored retail center.

PROPERTY HIGHLIGHTS

- 22,823 square foot corner lot
- All utilities are at the site
- Over 30,000 VPD
- Fully controlled intersection
- Strong demographics

KEN DAVIS
O: 509.949.0860
ken.davis@svn.com

LOCATION MAP



KEN DAVIS
O: 509.949.0860
ken.davis@svn.com

DEMOGRAPHICS MAP & REPORT

POPULATION

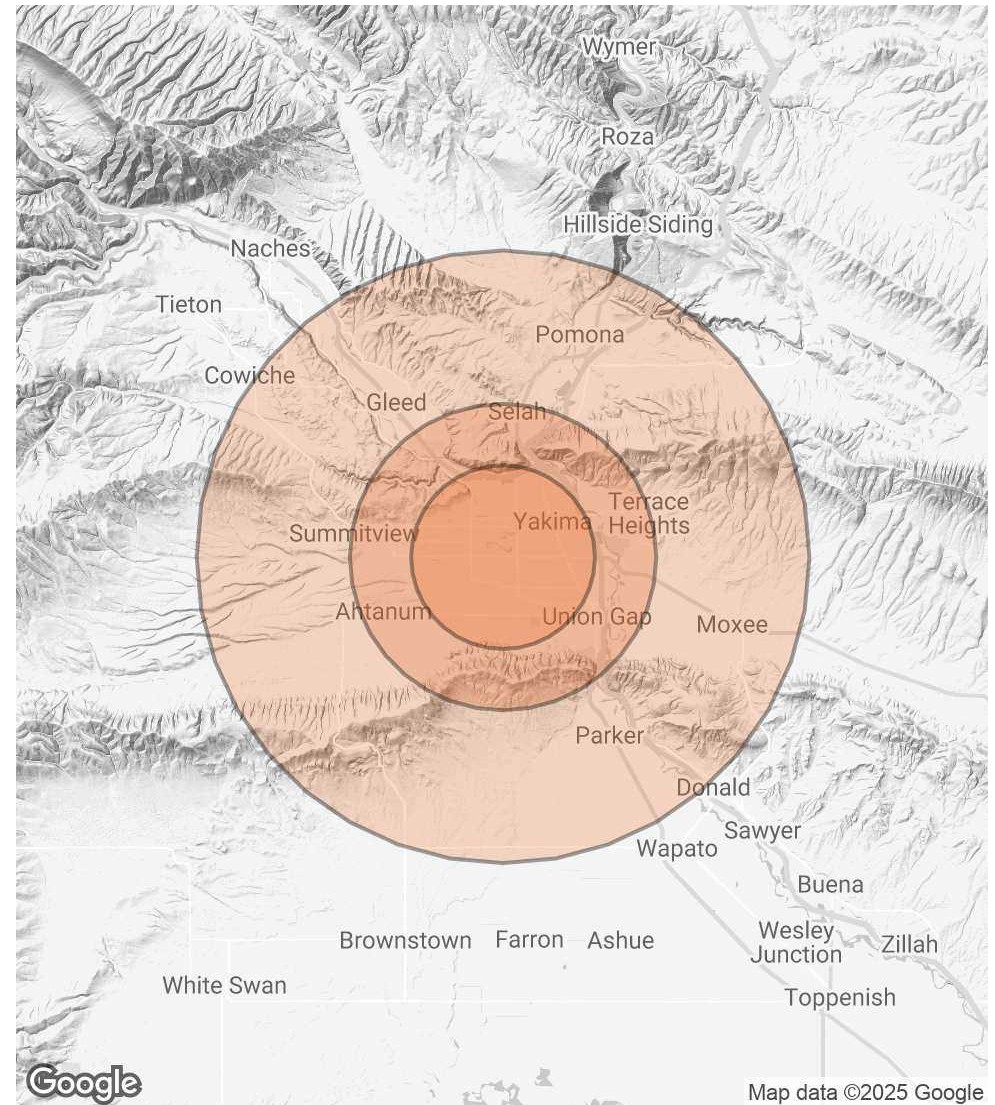
3 MILES 5 MILES 10 MILES

	3 MILES	5 MILES	10 MILES
TOTAL POPULATION	89,291	123,298	159,607
AVERAGE AGE	38	38	39
AVERAGE AGE (MALE)	37	37	38
AVERAGE AGE (FEMALE)	38	39	39

HOUSEHOLDS & INCOME 3 MILES 5 MILES 10 MILES

	3 MILES	5 MILES	10 MILES
TOTAL HOUSEHOLDS	32,560	45,167	57,837
# OF PERSONS PER HH	2.7	2.7	2.8
AVERAGE HH INCOME	\$71,413	\$77,811	\$83,577
AVERAGE HOUSE VALUE	\$289,261	\$317,287	\$338,417

* Demographic data derived from 2020 ACS - US Census



KEN DAVIS

O: 509.949.0860

ken.davis@svn.com