

TBD USTICK RD & MIDDLETON RD | CALDWELL, ID 83687

INDUSTRIAL LAND FOR SALE (18.3 ACRES \$5.00/SF)

OWNER USER OR DEVELOPMENT



MARK BOTTLES | mark@markbottles.com DAVE BOHECKER | dave@markbottles.com

839 S. Bridgeway Place Eagle, ID 83616-6097 | 208.377.5700 | markbottles.com

This information contained herein is from sources deemed reliable. We have no reason to doubt its accuracy but do not guarantee it. It is the responsibility of the person reviewing this information to independently verify it. This package is subject to change, prior to sale or complete withdrawal. Maps are provided for location purposes only. The pictures cannot be reproduced in whole or in part without prior written consent.





MARK BOTTLES
REAL ESTATE SERVICES

USTICK RD INDUSTRIAL LAND

Industrial Land For Sale

CALDWELL, ID 83687 | 18.3 ACRES



PROPERTY HIGHLIGHTS

- Plat ready to submit or modify for up to 4 lot development or 18.3 acres for owner/user
- High traffic volumes on Ustick Rd and Middleton Rd
- C-3 Zoning allows for Warehouse, Flex Space, Storage Facility as well as Commercial Use
- 750 ft of frontage on Ustick Rd Located on Principal Arterial Close to I-84
- Sewer less than a mile to the North Within Caldwell Airport overlay zone
- Possible Interstate access at Ustick & I-84. City of Caldwell currently working through the justification process with ITD
- Adjacent 12.6 Acres also available - Contact Agent

OFFERING SUMMARY

Sale Price:	\$3,986,000 (\$5.00/SF)
Lot Size:	18.3 Acres

POTENTIAL LOT DEVELOPMENT

Parcel	Acreage
1	2.643 Acres
2	3.039 Acres
3	3.010 Acres
4	7.414 Acres

MARK BOTTLES
208.866.2222
mark@markbottles.com

DAVE BOHECKER
208.230.3309
dave@markbottles.com

MARK BOTTLES REAL ESTATE SERVICES

839 S. Bridgeway Place, Eagle, ID 83616-6097
208.377.5700 | markbottles.com

This information contained herein is from sources deemed reliable. We have no reason to doubt its accuracy but do not guarantee it. It is the responsibility of the person reviewing this information to independently verify it. This package is subject to change, prior to sale or complete withdrawal. Maps are provided for location purposes only. The pictures cannot be reproduced in whole or in part without prior written consent.



MARK BOTTLES
REAL ESTATE SERVICES

USTICK RD INDUSTRIAL LAND

Industrial Land For Sale

CALDWELL, ID 83687 | 18.3 ACRES



MARK BOTTLES
208.866.2222
mark@markbottles.com

DAVE BOHECKER
208.230.3309
dave@markbottles.com

MARK BOTTLES REAL ESTATE SERVICES

839 S. Bridgeway Place, Eagle, ID 83616-6097
208.377.5700 | markbottles.com

This information contained herein is from sources deemed reliable. We have no reason to doubt its accuracy but do not guarantee it. It is the responsibility of the person reviewing this information to independently verify it. This package is subject to change, prior to sale or complete withdrawal. Maps are provided for location purposes only. The pictures cannot be reproduced in whole or in part without prior written consent.



MARK BOTTLES
REAL ESTATE SERVICES

Industrial Land For Sale

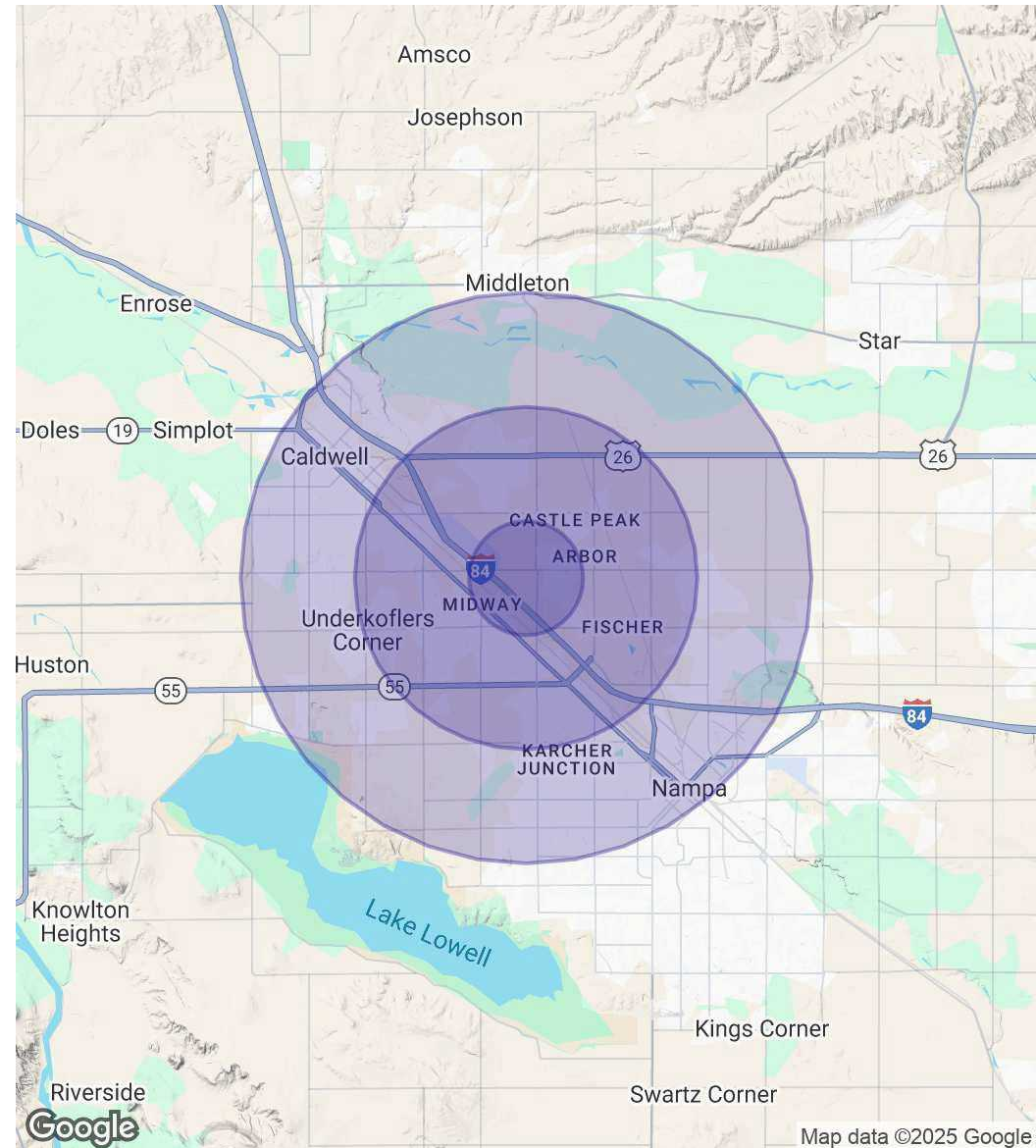
USTICK RD INDUSTRIAL LAND

CALDWELL, ID 83687 | 18.3 ACRES

POPULATION	1 MILE	3 MILES	5 MILES
Total Population	5,880	47,247	144,630
Average Age	32	35	36
Average Age (Male)	31	34	35
Average Age (Female)	33	36	37

HOUSEHOLDS & INCOME	1 MILE	3 MILES	5 MILES
Total Households	1,805	15,371	48,354
# of Persons per HH	3.3	3.1	3
Average HH Income	\$88,673	\$87,313	\$84,560
Average House Value	\$468,029	\$400,926	\$394,034

**Demographic data derived from 2020 ACS - US Census*



Map data ©2025 Google

MARK BOTTLES
208.866.2222
mark@markbottles.com

DAVE BOHECKER
208.230.3309
dave@markbottles.com

MARK BOTTLES REAL ESTATE SERVICES

839 S. Bridgeway Place, Eagle, ID 83616-6097
208.377.5700 | markbottles.com

This information contained herein is from sources deemed reliable. We have no reason to doubt its accuracy but do not guarantee it. It is the responsibility of the person reviewing this information to independently verify it. This package is subject to change, prior to sale or complete withdrawal. Maps are provided for location purposes only. The pictures cannot be reproduced in whole or in part without prior written consent.

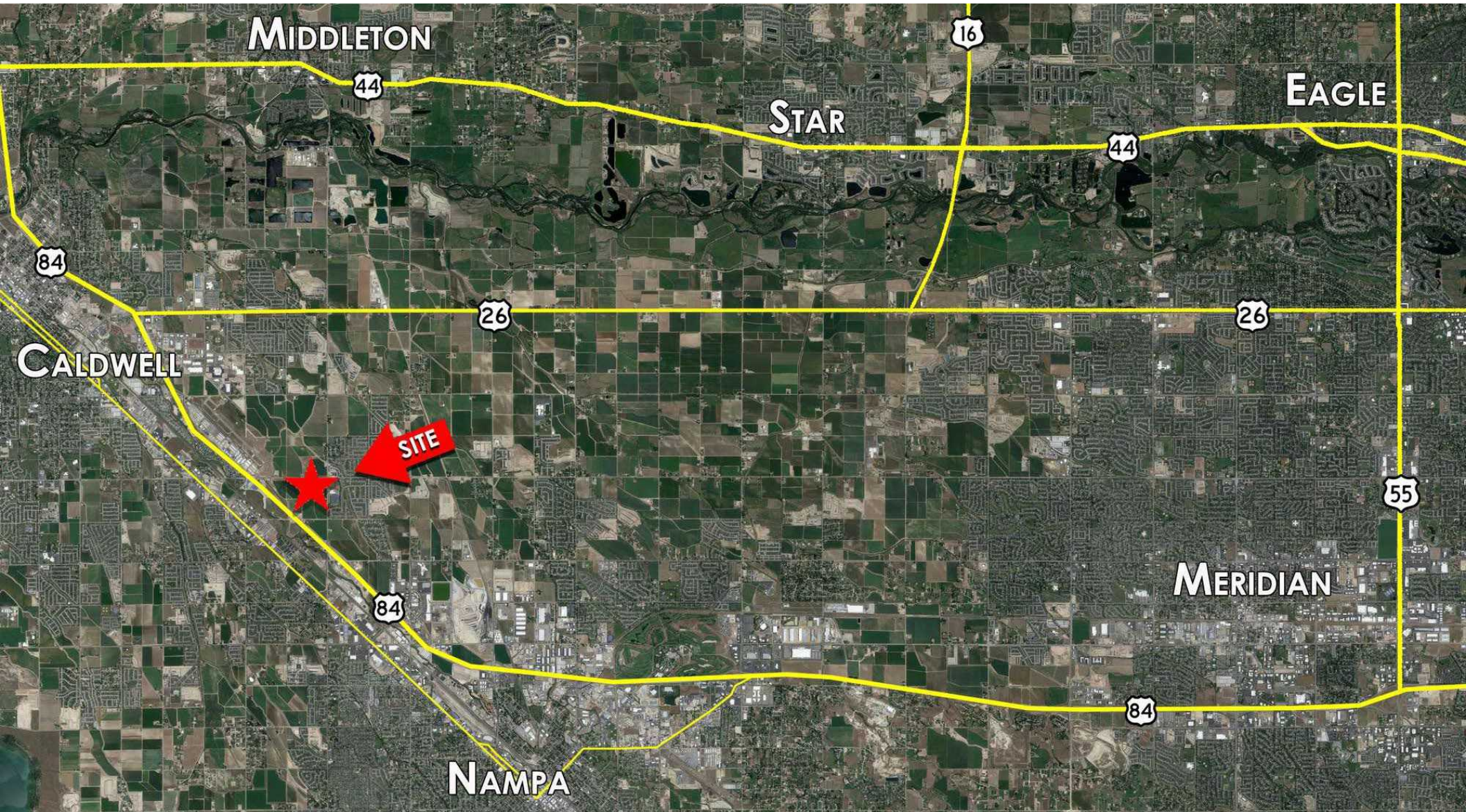


MARK BOTTLES
REAL ESTATE SERVICES

USTICK RD INDUSTRIAL LAND

Industrial Land For Sale

CALDWELL, ID 83687 | 18.3 ACRES



MARK BOTTLES
208.866.2222
mark@markbottles.com

DAVE BOHECKER
208.230.3309
dave@markbottles.com

MARK BOTTLES REAL ESTATE SERVICES

839 S. Bridgeway Place, Eagle, ID 83616-6097
208.377.5700 | markbottles.com

This information contained herein is from sources deemed reliable. We have no reason to doubt its accuracy but do not guarantee it. It is the responsibility of the person reviewing this information to independently verify it. This package is subject to change, prior to sale or complete withdrawal. Maps are provided for location purposes only. The pictures cannot be reproduced in whole or in part without prior written consent.