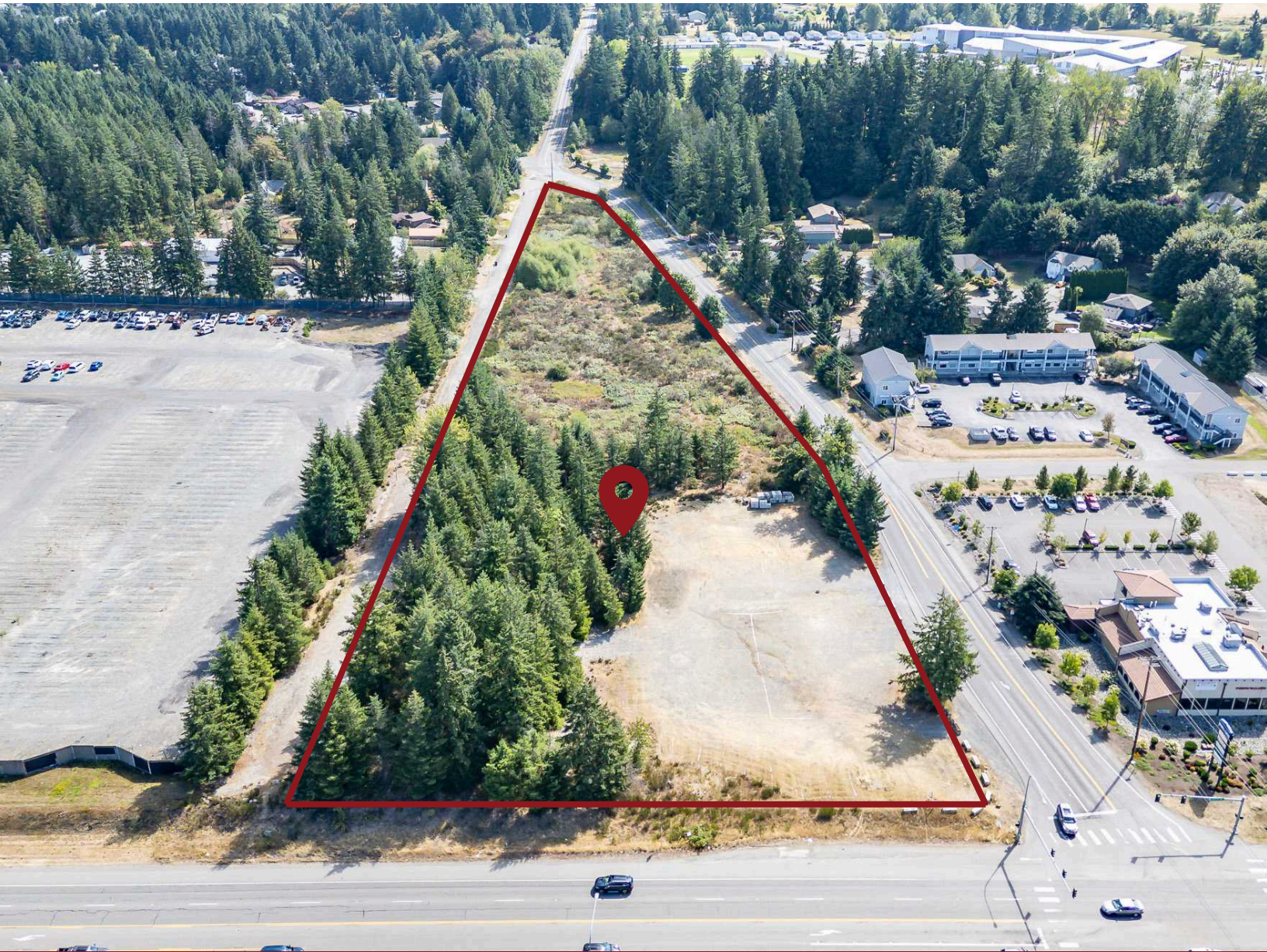


# Graham Industrial Land

10301 Eustis Hunt Rd E , Graham



**For Sale 248,292 SF**

Prime real estate featuring three parcels on a coveted corner lot.

*Presented by:*

**Austin Scarsella**

☎ (253) 335-3019

✉ [Austin@MyPugetSoundRealty.com](mailto:Austin@MyPugetSoundRealty.com)





## Summary

My Puget Sound Commercial is pleased to present **10301 Eustis Hunt Rd E , Graham for sale in Graham**. This presents the rare opportunity to purchase industrial/Commercial land for sale of prime real estate featuring three parcels on a coveted corner lot.

The property encompasses approximately with 248,292 sq. ft. and is zoned **R10 (Pierce County Zoning)**. The R10 zoning zone classification is intended to provide for rural uses at a rural density. 10301 Eustis Hunt Rd E , Graham makes for an outstanding prospect for an owner user or development buyer given its prime location and zoning. Also, almost to full approval for a contractor yard with a shop, office and yard with designs and permits

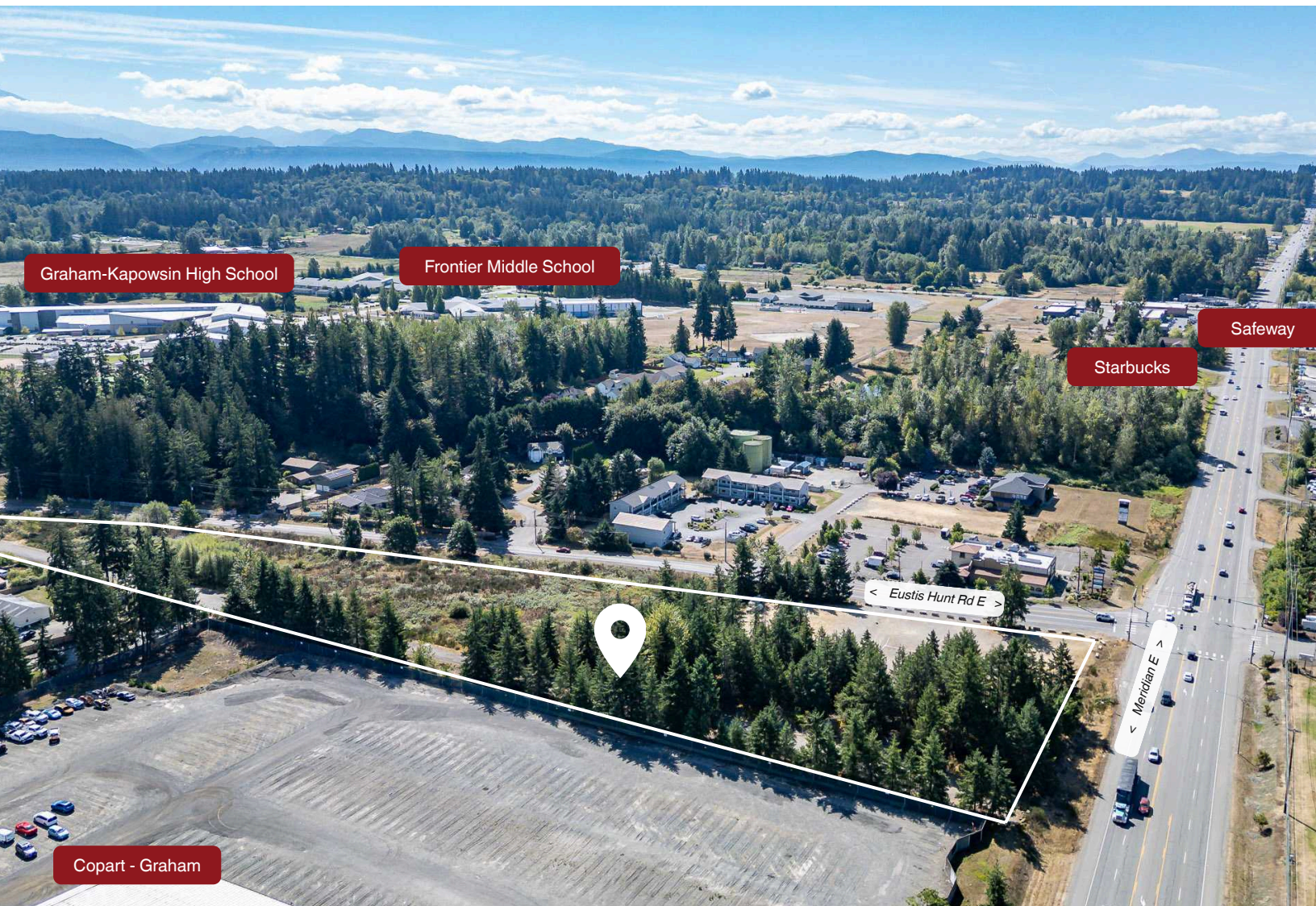
## Property Overview

ADDRESS	10301 Eustis Hunt Rd E , Graham
SITE (SF)	248,297
SITE (ACRE)	5.7 Acres
ZONING	R10 Pierce County Zoning
HIGHLIGHTS	Prime real estate featuring three parcels on a coveted corner lot. Located directly opposite the vibrant Pierce County Fair, this location presents a remarkable potential for multifaceted development.
OFFERING PRICE	\$2,100,000
PRICE PSF (LAND)	\$8-\$9/sqft (\$8.46)



The information supplied herein is from sources we deem reliable. It is provided without any representation, warranty or guarantee, expressed or implied, as to its accuracy. Prospective Buyer or Tenant should conduct an independent investigation and verification of all matters deemed to be material, including, but not limited to, statements of income and expenses. CONSULT YOUR ATTORNEY, ACCOUNTANT OR OTHER PROFESSIONAL ADVISOR.

## Site Area



This is a 5.7 Acres of Commercial/Industrial land For Sale.  
Located on the NE corner of Meridian and Eustis Hunt Rd.



## Local Map

