
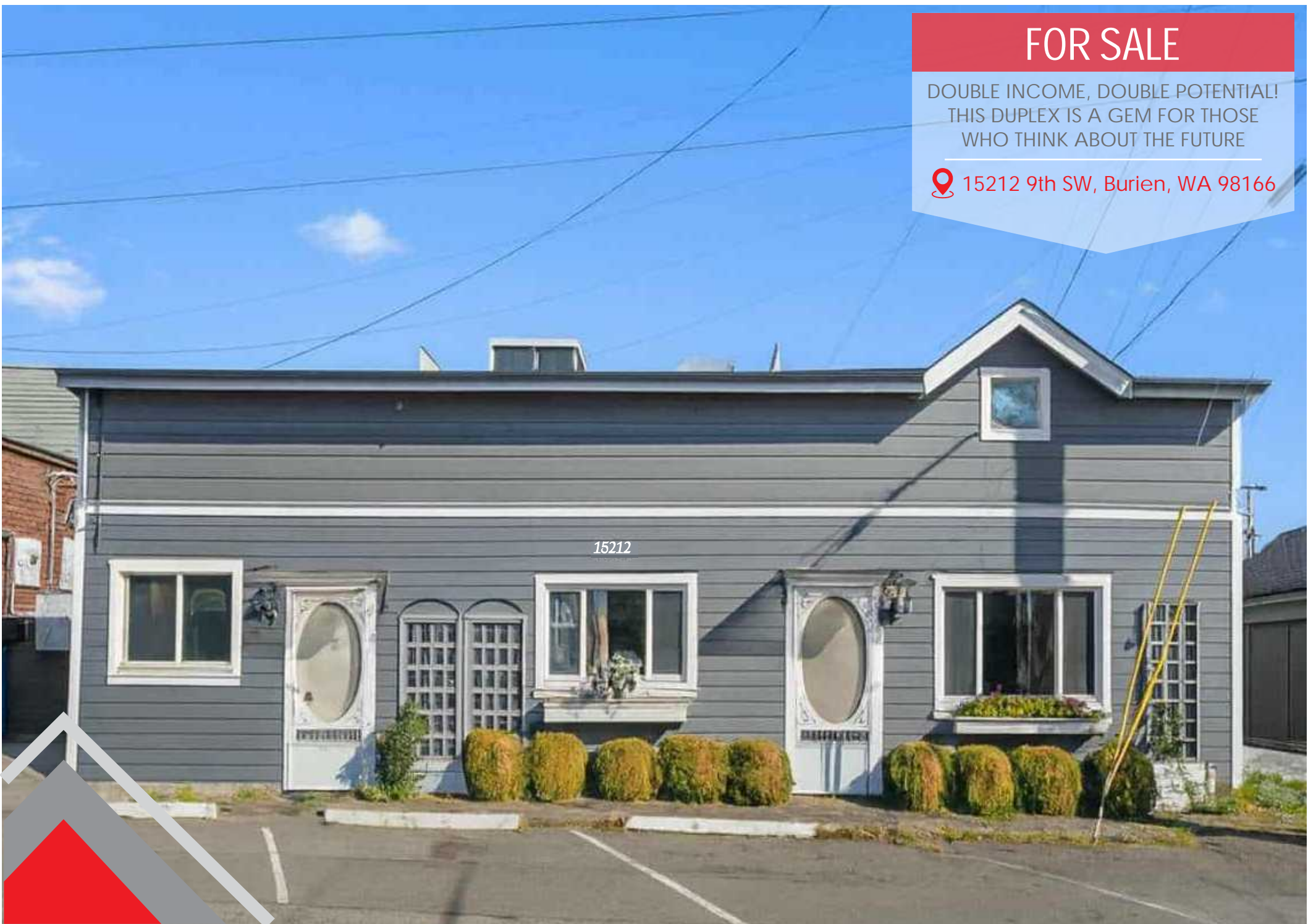


FOR SALE

DOUBLE INCOME, DOUBLE POTENTIAL!
THIS DUPLEX IS A GEM FOR THOSE
WHO THINK ABOUT THE FUTURE

 15212 9th SW, Burien, WA 98166



FOR MORE INFORMATION PLEASE CONTACT

Rodolfo Hernandez McIntyre
LISTING AGENT



206-518-5518



@rodolfo@kw.com



seareal.kw.com



KWBELLEVUE
KELLERWILLIAMS

FOR SALE  15212 9th SW, Burien, WA 98166

PROPERTY DESCRIPTION

Excellent investment opportunity in the heart of Old Burien! This well-maintained duplex offers two spacious units in good condition, both currently operating with steady income. Ideally located near Old Burien's shops, restaurants, parks, and transit with quick freeway access. Perfect for investors or owner-occupants looking for rental potential in a highly desirable area. A solid property in a vibrant and growing community.

Just a few minutes from the Puget Sound coast, surrounded by vibrant shops and a welcoming community you can easily explore on foot, this neighborhood offers the perfect mix of convenience, charm, and scenic beauty.

Nearby Schools

Located within the Highline School District, one of the area's most established school systems. The nearest elementary school is Seahurst Elementary School, just 0.7 miles away at 14603 14th Ave SW. Another nearby option is Gregory Heights Elementary School located at 16201 16th Ave SW.

This proximity to quality schools adds great value for families and enhances neighborhood appeal.

Home Value & Market Comparisons

The property at 15212 9th Ave SW sold in August 2020 for \$430,000 (3 bed, 2 bath, ~2,000 sq ft).

Its current estimated value ranges between \$624,000 – \$731,000, reflecting strong appreciation over recent years.

A nearby comparable property, 15220 9th Ave SW (3 bed, 2 bath, 1,510 sq ft), was recently listed for \$749,950 (~\$497 per sq ft).

These figures demonstrate a growing market with solid potential for continued value increase ideal for both homeowners and investors.

Some feature outdoor stone fireplaces, built-in BBQs, and beautifully designed patios — ideal for gathering with friends and neighbors. Enhancing the storybook atmosphere, the yards are adorned with lush raised garden beds overflowing with vibrant flowers and greenery, while mature fig and cherry trees provide a graceful canopy overhead.

PROPERTY DETAILS

STYLE CODE: 52 - Duplex

ZONING JURISDICTION: City

TOTAL NUM OF UNITS: 2

BUILDING CONDITION: Good

NEW CONSTRUCTION: No

SEWER: Sewer Connected

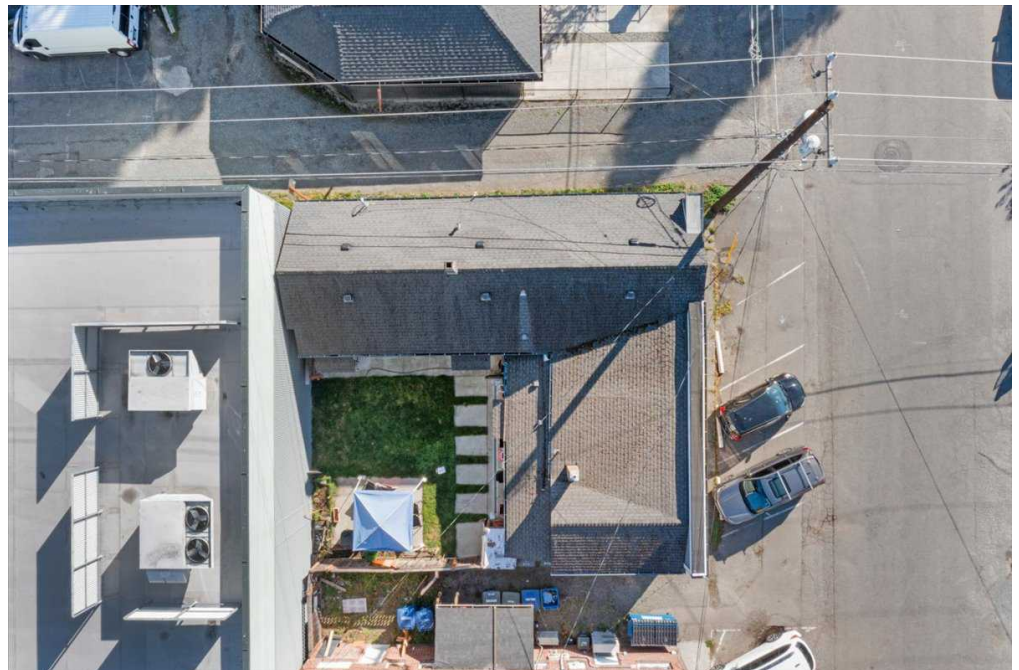
VIEW: Territorial

FLOOR COVERING: Laminate

EXTERIOR: Cement/Concrete, Wood

SQFT: 1,530

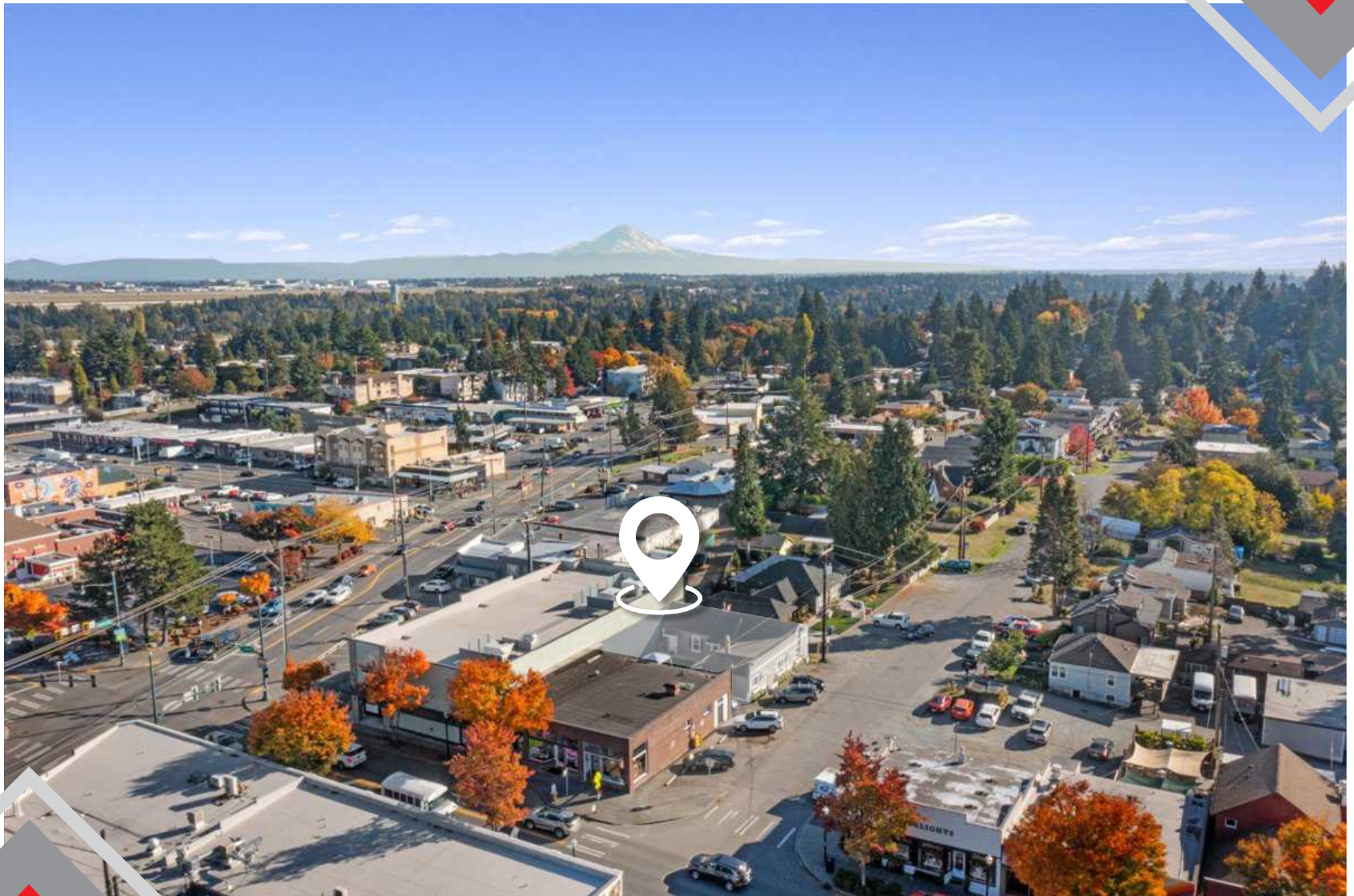
FOR SALE  15212 9th SW, Burien, WA 98166



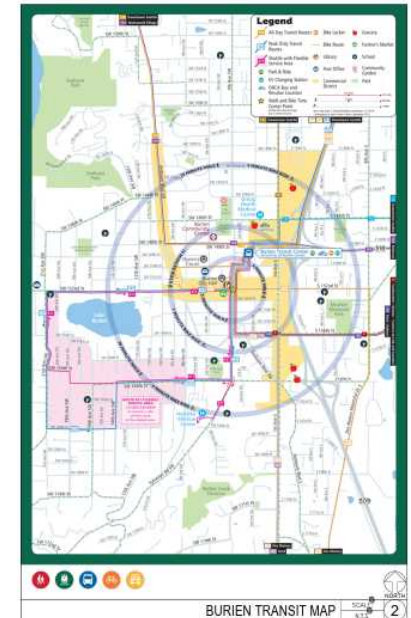
FOR SALE  15212 9th SW, Burien, WA 98166



FOR SALE  15212 9th SW, Burien, WA 98166



FOR SALE  15212 9th SW, Burien, WA 98166





kw BELLEVUE
KELLERWILLIAMS.



206 518 5518



seareal.kw.com



10500 NE 8th Street,
Suite 1450

Bellevue | WA 98004, USA

