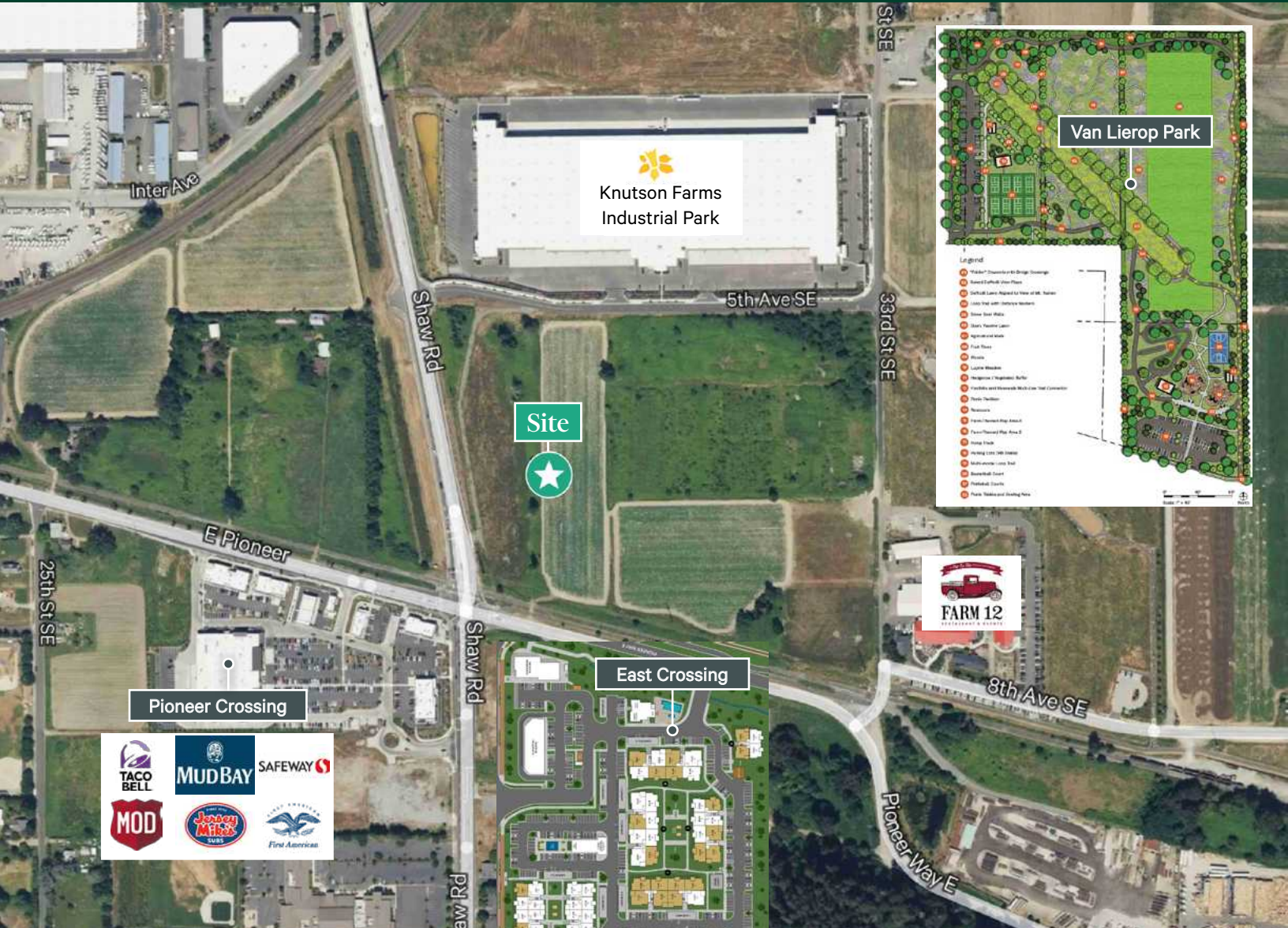


±15.13 Acres

714 & 7XX 33rd Street East  
2901 East Pioneer  
Puyallup, WA 98372



Property Highlights

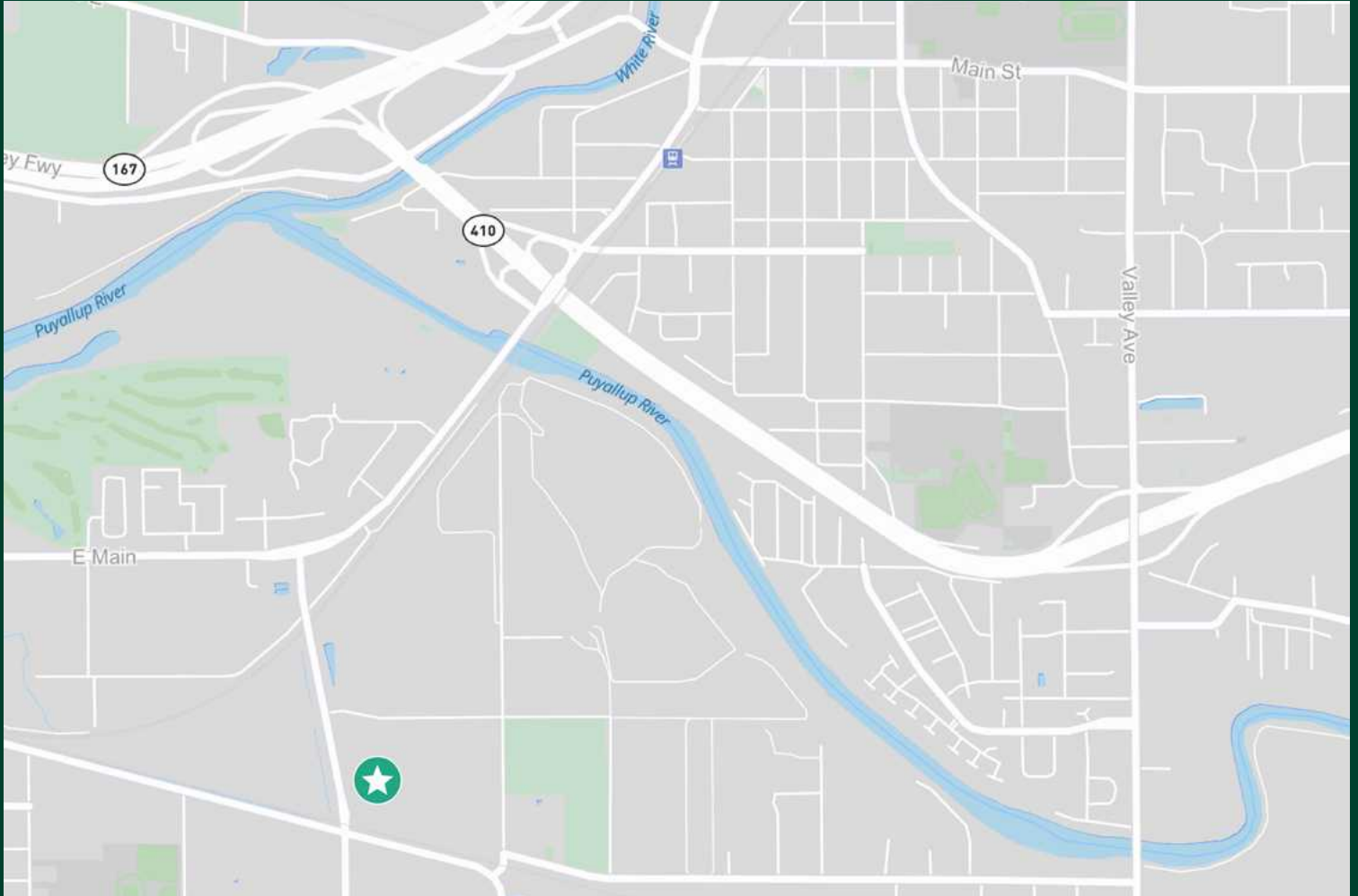
- + Property Size: ±15.13 acres
- + Municipality: City of Puyallup
- + Zoning: CMX – Commercial, Retail, Multifamily/Residential
- + Excellent visibility
- + Shaw Road frontage
- + Close freeway access
- + Infrastructure: City of Puyallup water & sewer, PSE electric & gas
- + Call broker for pricing info

# Parcel Map

Parcels: 042026-4005 | 042026-4006 | 042026-4023



# Demographic Map



Demographics	1 Mile	2 Miles	3 Miles	5 Miles
Estimated Population	8,341	31,824	60,195	172,132
Avg Household Income	\$127,465	\$124,785	\$124,826	\$137,706
Avg Age	36.9	40.4	39.9	39.1

## Contact Us

**Teresa Patton**  
First Vice President  
+1 206 963 1000  
teresa.patton@cbre.com



**Eric Jackson**  
Regional Broker  
+1 253 224 0544  
ericallenjackson@gmail.com

© 2025 CBRE, Inc. All rights reserved. This information has been obtained from sources believed reliable, but has not been verified for accuracy or completeness. You should conduct a careful, independent investigation of the property and verify all information. Any reliance on this information is solely at your own risk. CBRE and the CBRE logo are service marks of CBRE, Inc. All other marks displayed on this document are the property of their respective owners, and the use of such logos does not imply any affiliation with or endorsement of CBRE. Photos herein are the property of their respective owners. Use of these images without the express written consent of the owner is prohibited.