

**FOR SALE**

# 1092 & 1094 Ash Ave

Marysville, WA 98270

*Warehouses with Fenced Yard and Flexible House-Office, Ideally Located off I-5*

## PROPERTY HIGHLIGHTS

- + 5,000 SF Across Two Warehouses
- + 5 Grade Level Doors
- + 1,694 SF House Well Suited for Living or Office Use
- + Ample Outdoor Storage Area
- + Zoned Flex - Allows for Light Industrial, Multifamily, Gas Station and More
- + 200 SF Fixed Accessory Storage

Virtual Tour



### ETHAN ARONOWITZ

Associate  
+1 425 586 5612  
earonowitz@nai-psp.com

### HANS SWENSON

Partner  
+1 425 586 5636  
hswenson@nai-psp.com

### TAMIR OHAYON

Partner  
+1 425 586 56  
tohayon@nai-psp.com



THE INFORMATION CONTAINED HEREIN HAS BEEN GIVEN TO US BY THE OWNER OF THE PROPERTY OR OTHER SOURCES WE DEEM RELIABLE, WE HAVE NO REASON TO DOUBT ITS ACCURACY, BUT WE DO NOT GUARANTEE IT. ALL INFORMATION SHOULD BE VERIFIED PRIOR TO PURCHASE OR LEASE.

TOTAL BUILDING SF

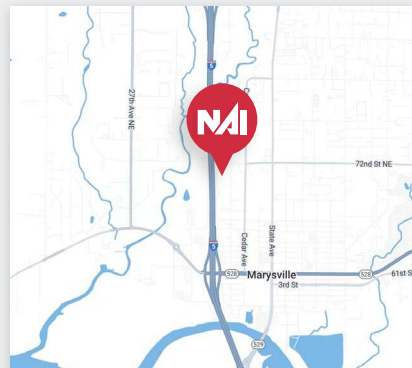
**6,894 SF**

LOT SIZE

**31,922 SF  
(0.73 AC)**

SALE PRICE

**\$1,300,000**

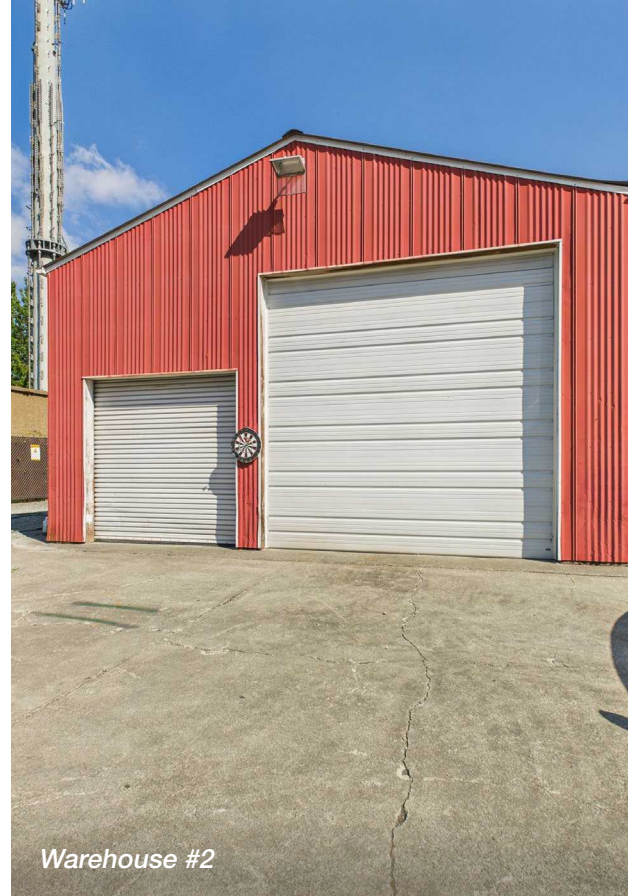


[nai-psp.com](http://nai-psp.com)



Two Parcels

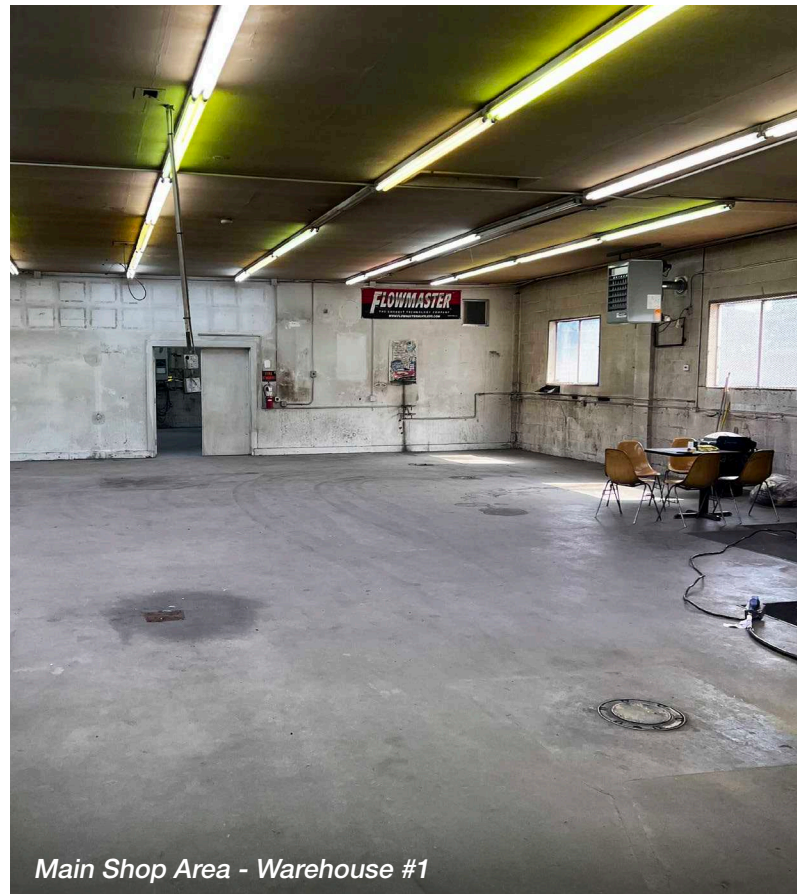
Google



Warehouse #2



House-Office



Main Shop Area - Warehouse #1

**ETHAN ARONOWITZ**

Associate  
+1 425 586 5612  
earonowitz@nai-psp.com

**HANS SWENSON**

Partner  
+1 425 586 5636  
hswenson@nai-psp.com

**TAMIR OHAYON**

Partner  
+1 425 586 56  
tohayon@nai-psp.com

