

FOR SALE

# SAMMAMISH 216TH RESIDENTIAL DEVELOPMENT SITE

A 2.32-Acre Development  
Opportunity in North Sammamish

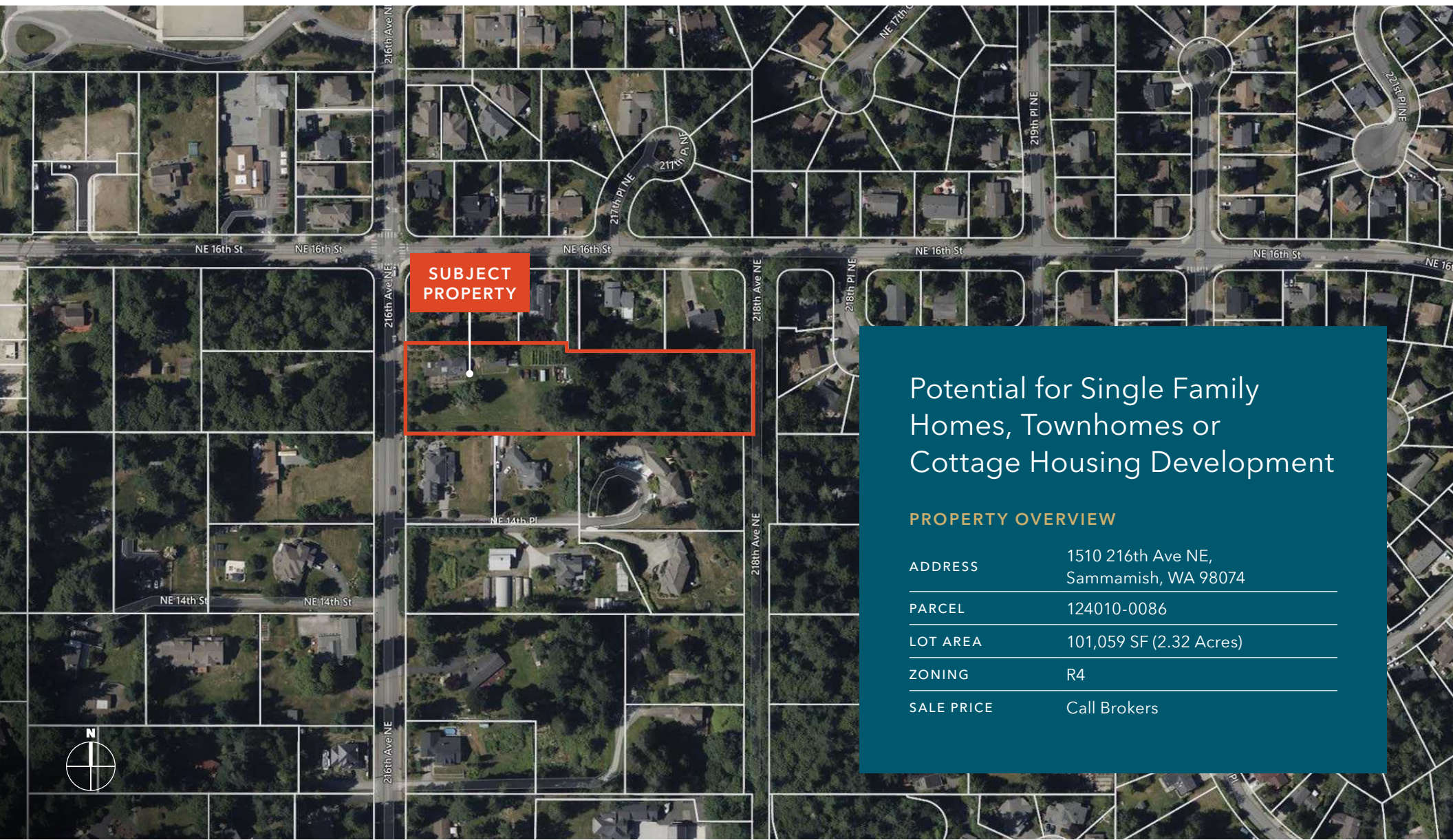
1510 216TH AVE NE | SAMMAMISH, WA

SUBJECT  
PROPERTY

KIDDER.COM

216TH AVE NE

km Kidder  
Mathews



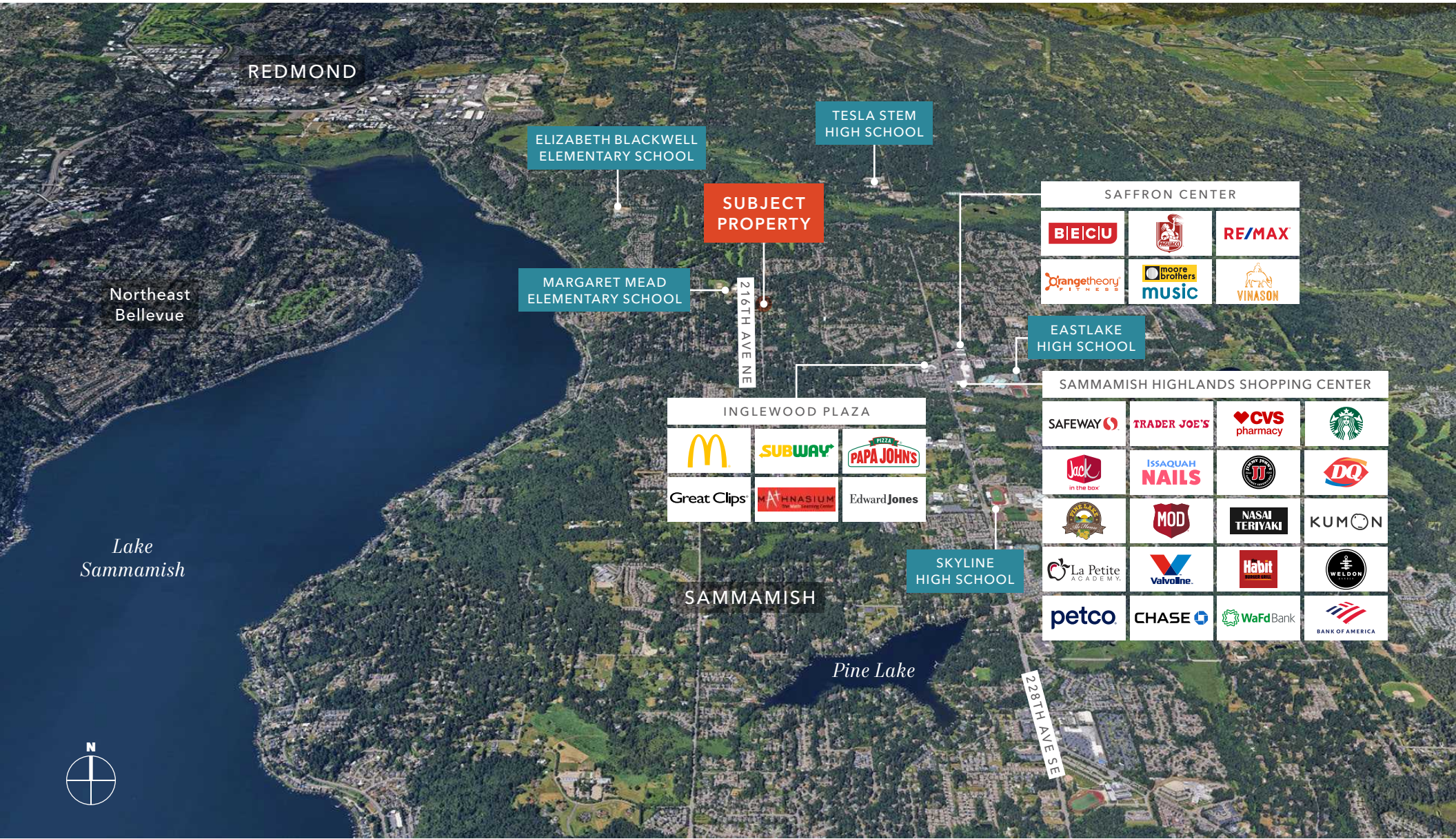
SUBJECT  
PROPERTY

Potential for Single Family  
Homes, Townhomes or  
Cottage Housing Development

PROPERTY OVERVIEW

ADDRESS	1510 216th Ave NE, Sammamish, WA 98074
PARCEL	124010-0086
LOT AREA	101,059 SF (2.32 Acres)
ZONING	R4
SALE PRICE	Call Brokers

SAMMAMISH 216TH RESIDENTIAL DEVELOPMENT SITE



# DEMOGRAPHICS

## POPULATION

	1 Mile	3 Miles	5 Miles
2010 CENSUS	11,480	48,009	158,079
2020 CENSUS	13,082	55,896	192,423
2025 ESTIMATED	13,515	55,105	191,609
2030 PROJECTED	13,061	53,306	190,670

## MEDIAN AGE & GENDER

	1 Mile	3 Miles	5 Miles
MEDIAN AGE	39.0	39.3	37.3
FEMALE	49.8%	49.8%	49.0%
MALE	50.2%	50.2%	51.0%

## HOUSEHOLD INCOME

	1 Mile	3 Miles	5 Miles
2025 MEDIAN	\$235,721	\$245,047	\$192,657
2030 MEDIAN PROJECTED	\$232,954	\$243,991	\$190,130
2025 AVERAGE	\$296,041	\$318,637	\$254,668
2030 AVERAGE PROJECTED	\$293,434	\$316,366	\$249,742

Data Source: ©2025, Sites USA





## SAMMAMISH 216TH RESIDENTIAL DEVELOPMENT SITE

*For more information about  
this opportunity, please contact*

**STEVE PELLUER**  
Senior Vice President  
206.914.3382  
[steve.pelluer@kidder.com](mailto:steve.pelluer@kidder.com)

**ZEKE PELLUER**  
Associate Vice President  
425.614.0082  
[zeke.pelluer@kidder.com](mailto:zeke.pelluer@kidder.com)

[KIDDER.COM](https://www.kidder.com)

This information supplied herein is from sources we deem reliable. It is provided without any representation, warranty, or guarantee, expressed or implied as to its accuracy. Prospective Buyer or Tenant should conduct an independent investigation and verification of all matters deemed to be material, including, but not limited to, statements of income and expenses. Consult your attorney, accountant, or other professional advisor. All Kidder Mathews designs are the sole property of Kidder Mathews. Branded materials and layouts are not authorized for use by any other firm or person.

