

GREENWOOD AVE N 9 UNIT

\$2,495,000 6.2%CAP

11023 GREENWOOD AVENUE NORTH, SEATTLE, WA 98133



OFFERING MEMORANDUM

KELLER WILLIAMS NORTH SEATTLE

10700 Meridian Avenue North Suite 504
Seattle, WA 98133



Each Office Independently Owned and Operated

PRESENTED BY:

KEVIN FITZGERALD

Broker

O: (206) 327-8002

C: (206) 327-8002

kevinfitzgerald@kw.com

ANNE MARIE KREIDLER

Excel Properties

O: 206-524-2135

Annemariek@excelrci.com

We obtained the information above from sources we believe to be reliable. However, we have not verified its accuracy and make no guarantee, warranty or representation about it. It is submitted subject to the possibility of errors, omissions, change of price, rental or other conditions, prior sale, lease or financing, or withdrawal without notice. We include projections, opinions, assumptions or estimates for example only, and they may not represent current or future performance of the property. You and your tax and legal advisors should conduct your own investigation of the property and transaction.

TABLE OF CONTENTS

11023 GREENWOOD AVENUE NORTH



KELLER WILLIAMS NORTH SEATTLE
10700 Meridian Avenue North Suite 504
Seattle, WA 98133

KEVIN FITZGERALD
BROKER
O: (206) 327-8002
C: (206) 327-8002
kevinfitzgerald@kw.com

ANNE MARIE KREIDLER
EXCEL PROPERTIES
O: 206-524-2135
Annemariek@excelrci.com

Executive Summary	3
Location Maps	4
Demographics	5
Disclaimer	6

EXECUTIVE SUMMARY

11023 GREENWOOD AVENUE NORTH



OFFERING SUMMARY

PRICE:	\$2,495,000
NUMBER OF UNITS:	9
PRICE / UNIT:	\$277,222
BUILDING SF:	8,708
PRICE / SF:	\$286.52
NOI:	\$154,757
CAP RATE:	6.2%
OCCUPANCY:	100%
LOT SIZE:	7,232 SF
YEAR BUILT:	1974
PARKING:	11
PARKING RATIO:	1.2
ZONING:	LR3

PROPERTY OVERVIEW

11023 Greenwood Ave N is a 9-unit apartment building offering 7,953 net rentable square feet across a 7,232 square foot LR3-zoned lot

Unit Mix: Six 2BR/1BA units and three 1BR/1BA units

Average Unit Size: 884 SF

Year Built: 1974 | Effective Year: 1995

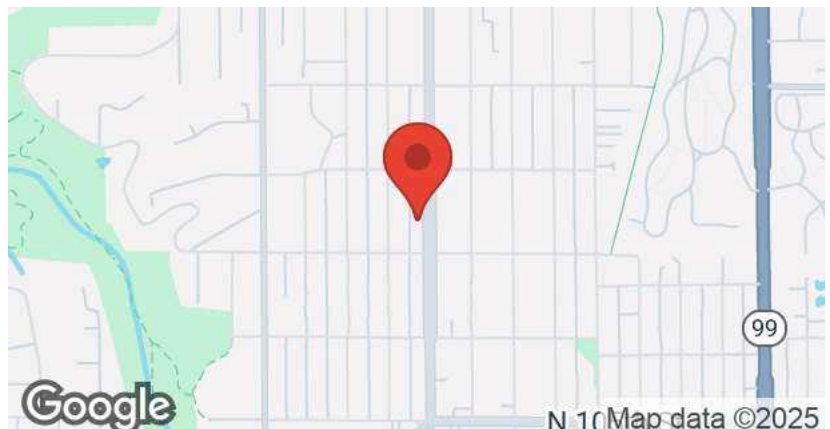
Construction: Wood frame, 3 stories, marble creet siding, newer built-up asphalt roof

Amenities: Common laundry, private storage lockers, secured entry, and ample parking (11 open stalls, 1 covered stall)

Heating/Systems: Electric baseboard heating, PVC plumbing, individually metered for water/sewer

Views: Approximately 20% of units enjoy territorial or westerly views

With durable construction, well-maintained systems, and above-average



KELLER WILLIAMS NORTH SEATTLE
10700 Meridian Avenue North Suite 504
Seattle, WA 98133



Each Office Independently Owned and Operated

KEVIN FITZGERALD

Broker

O: (206) 327-8002

C: (206) 327-8002

kevinfitzgerald@kw.com

ANNE MARIE KREIDLER

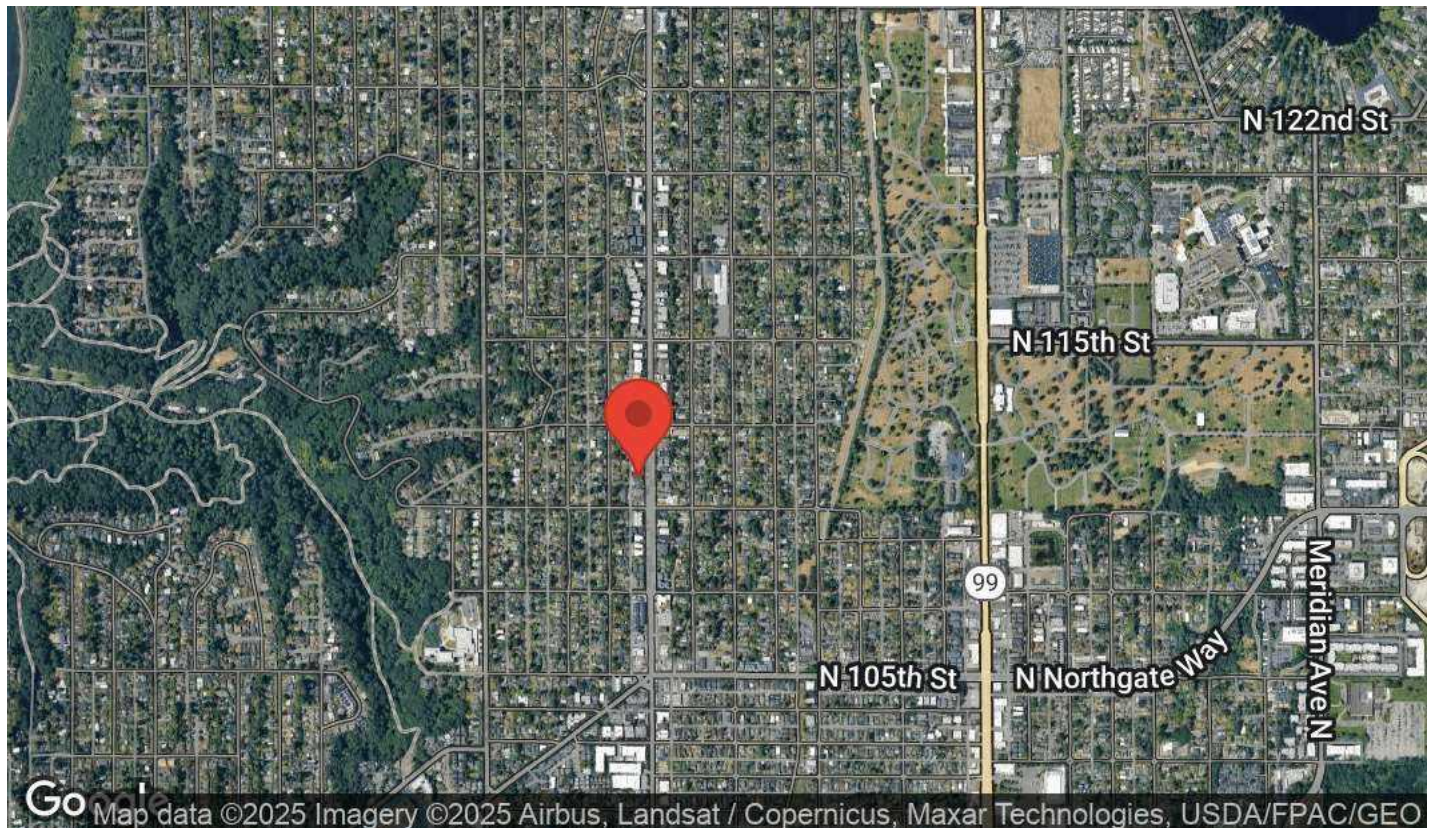
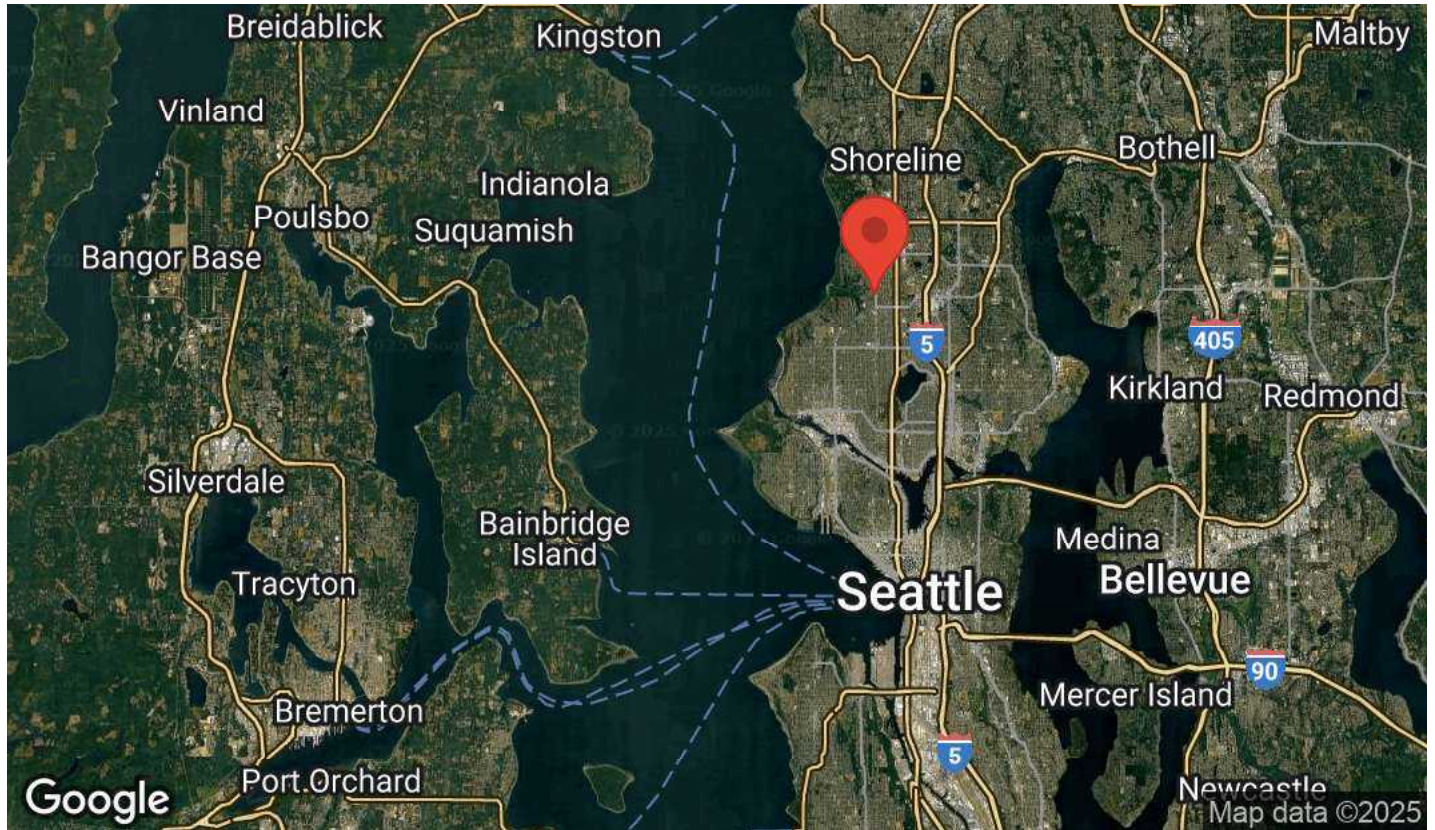
Excel Properties

O: 206-524-2135

Annemariek@excelrci.com

LOCATION MAPS

11023 GREENWOOD AVENUE NORTH



KELLER WILLIAMS NORTH SEATTLE
10700 Meridian Avenue North Suite 504
Seattle, WA 98133



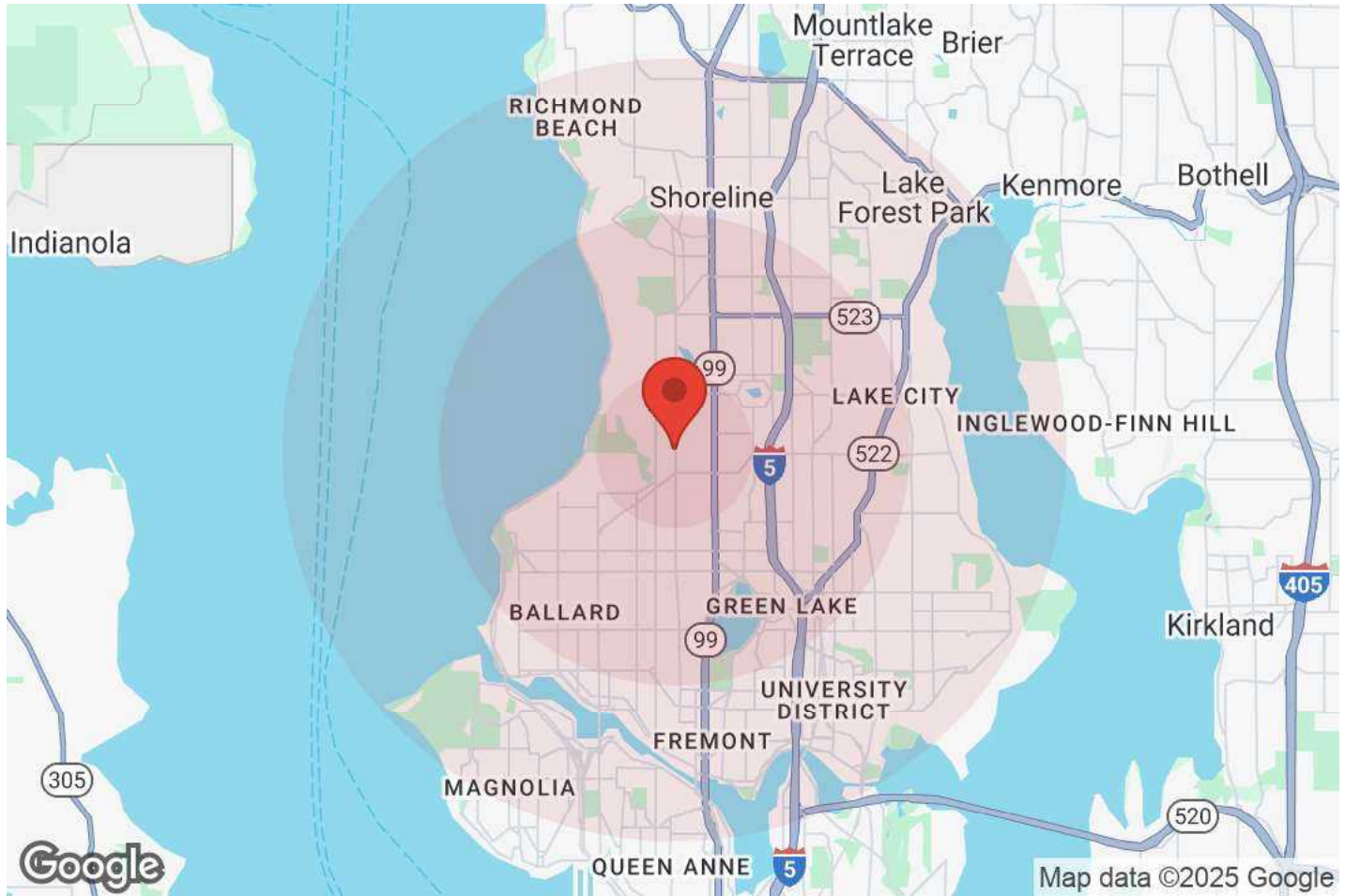
Each Office Independently Owned and Operated

KEVIN FITZGERALD
Broker
O: (206) 327-8002
C: (206) 327-8002
kevinfitzgerald@kw.com

ANNE MARIE KREIDLER
Excel Properties
O: 206-524-2135
Annemariek@excelrci.com

DEMOGRAPHICS

11023 GREENWOOD AVENUE NORTH



Population	1 Mile	3 Miles	5 Miles
Male	11,819	94,664	223,924
Female	11,733	95,107	210,011
Total Population	23,552	189,771	433,935

Age	1 Mile	3 Miles	5 Miles
Ages 0-14	3,082	26,248	56,577
Ages 15-24	2,029	17,773	61,029
Ages 25-54	12,343	97,677	208,802
Ages 55-64	2,451	19,256	42,672
Ages 65+	3,646	28,818	64,856

Income	1 Mile	3 Miles	5 Miles
Median	\$123,302	\$134,032	\$131,672
< \$15,000	489	4,909	13,431
\$15,000-\$24,999	321	3,189	6,785
\$25,000-\$34,999	450	2,361	6,321
\$35,000-\$49,999	540	4,918	10,690
\$50,000-\$74,999	1,403	8,961	19,701
\$75,000-\$99,999	1,395	9,074	19,459
\$100,000-\$149,999	1,924	14,789	30,919
\$150,000-\$199,999	1,221	9,864	22,713
> \$200,000	3,218	29,481	63,318

Housing	1 Mile	3 Miles	5 Miles
Total Units	11,714	93,796	207,614
Occupied	10,962	87,547	193,337
Owner Occupied	5,548	45,153	94,263
Renter Occupied	5,414	42,394	99,074
Vacant	752	6,249	14,277

KELLER WILLIAMS NORTH SEATTLE
10700 Meridian Avenue North Suite 504
Seattle, WA 98133



Each Office Independently Owned and Operated

KEVIN FITZGERALD
Broker
O: (206) 327-8002
C: (206) 327-8002
kevinfitzgerald@kw.com

ANNE MARIE KREIDLER
Excel Properties
O: 206-524-2135
Annemariek@excelrci.com

DISCLAIMER

11023 GREENWOOD AVENUE NORTH



All materials and information received or derived from KW Commercial its directors, officers, agents, advisors, affiliates and/or any third party sources are provided without representation or warranty as to completeness, veracity, or accuracy, condition of the property, compliance or lack of compliance with applicable governmental requirements, developability or suitability, financial performance of the property, projected financial performance of the property for any party's intended use or any and all other matters.

Neither KW Commercial its directors, officers, agents, advisors, or affiliates makes any representation or warranty, express or implied, as to accuracy or completeness of the materials or information provided, derived, or received. Materials and information from any source, whether written or verbal, that may be furnished for review are not a substitute for a party's active conduct of its own due diligence to determine these and other matters of significance to such party. KW Commercial will not investigate or verify any such matters or conduct due diligence for a party unless otherwise agreed in writing.

EACH PARTY SHALL CONDUCT ITS OWN INDEPENDENT INVESTIGATION AND DUE DILIGENCE.

Any party contemplating or under contract or in escrow for a transaction is urged to verify all information and to conduct their own inspections and investigations including through appropriate third-party independent professionals selected by such party. All financial data should be verified by the party including by obtaining and reading applicable documents and reports and consulting appropriate independent professionals. KW Commercial makes no warranties and/or representations regarding the veracity, completeness, or relevance of any financial data or assumptions. KW Commercial does not serve as a financial advisor to any party regarding any proposed transaction.

All data and assumptions regarding financial performance, including that used for financial modeling purposes, may differ from actual data or performance. Any estimates of market rents and/or projected rents that may be provided to a party do not necessarily mean that rents can be established at or increased to that level. Parties must evaluate any applicable contractual and governmental limitations as well as market conditions, vacancy factors and other issues in order to determine rents from or for the property. Legal questions should be discussed by the party with an attorney. Tax questions should be discussed by the party with a certified public accountant or tax attorney. Title questions should be discussed by the party with a title officer or attorney. Questions regarding the condition of the property and whether the property complies with applicable governmental requirements should be discussed by the party with appropriate engineers, architects, contractors, other consultants, and governmental agencies. All properties and services are marketed by KW Commercial in compliance with all applicable fair housing and equal opportunity laws.

KELLER WILLIAMS NORTH SEATTLE

10700 Meridian Avenue North Suite 504
Seattle, WA 98133



Each Office Independently Owned and Operated

PRESENTED BY:

KEVIN FITZGERALD

Broker

O: (206) 327-8002

C: (206) 327-8002

kevinfitzgerald@kw.com

ANNE MARIE KREIDLER

Excel Properties

O: 206-524-2135

Annemariek@excelrci.com

The calculations and data presented are deemed to be accurate, but not guaranteed. They are intended for the purpose of illustrative projections and analysis. The information provided is not intended to replace or serve as substitute for any legal, accounting, investment, real estate, tax or other professional advice, consultation or service. The user of this software should consult with a professional in the respective legal, accounting, tax or other professional area before making any decisions.