

FOR SALE

7,300 SF CHURCH BUILDING *8+ AC OF INDUSTRIAL ZONED LAND*

3300 MARVIN RD NE, LACEY, WA 98516

Parcel 37590000100

Light Industrial zoning

4,440 SF (Built 2014) sanctuary & 2,926 SF portable classrooms

Property has shared use of the community retention pond on the adjacent parcel to the south

5 Acre parcel may be subdivided off and sold independently

Two (relocatable) portable classrooms - buyer can take over existing leases for both trailers and trailers are also available for separate purchase outside of this transaction

BRUCE BARKER, MBA

253.722.1459

bruce.barker@kidder.com



KIDDER.COM

This information supplied herein is from sources we deem reliable. It is provided without any representation, warranty, or guarantee, expressed or implied as to its accuracy. Prospective Buyer or Tenant should conduct an independent investigation and verification of all matters deemed to be material, including, but not limited to, statements of income and expenses. Consult your attorney, accountant, or other professional advisor. All Kidder Mathews designs are the sole property of Kidder Mathews. Branded materials and layouts are not authorized for use by any other firm or person.



FOR SALE



KIDDER.COM

This information supplied herein is from sources we deem reliable. It is provided without any representation, warranty, or guarantee, expressed or implied as to its accuracy. Prospective Buyer or Tenant should conduct an independent investigation and verification of all matters deemed to be material, including, but not limited to, statements of income and expenses. Consult your attorney, accountant, or other professional advisor. All Kidder Mathews designs are the sole property of Kidder Mathews. Branded materials and layouts are not authorized for use by any other firm or person.



FOR SALE

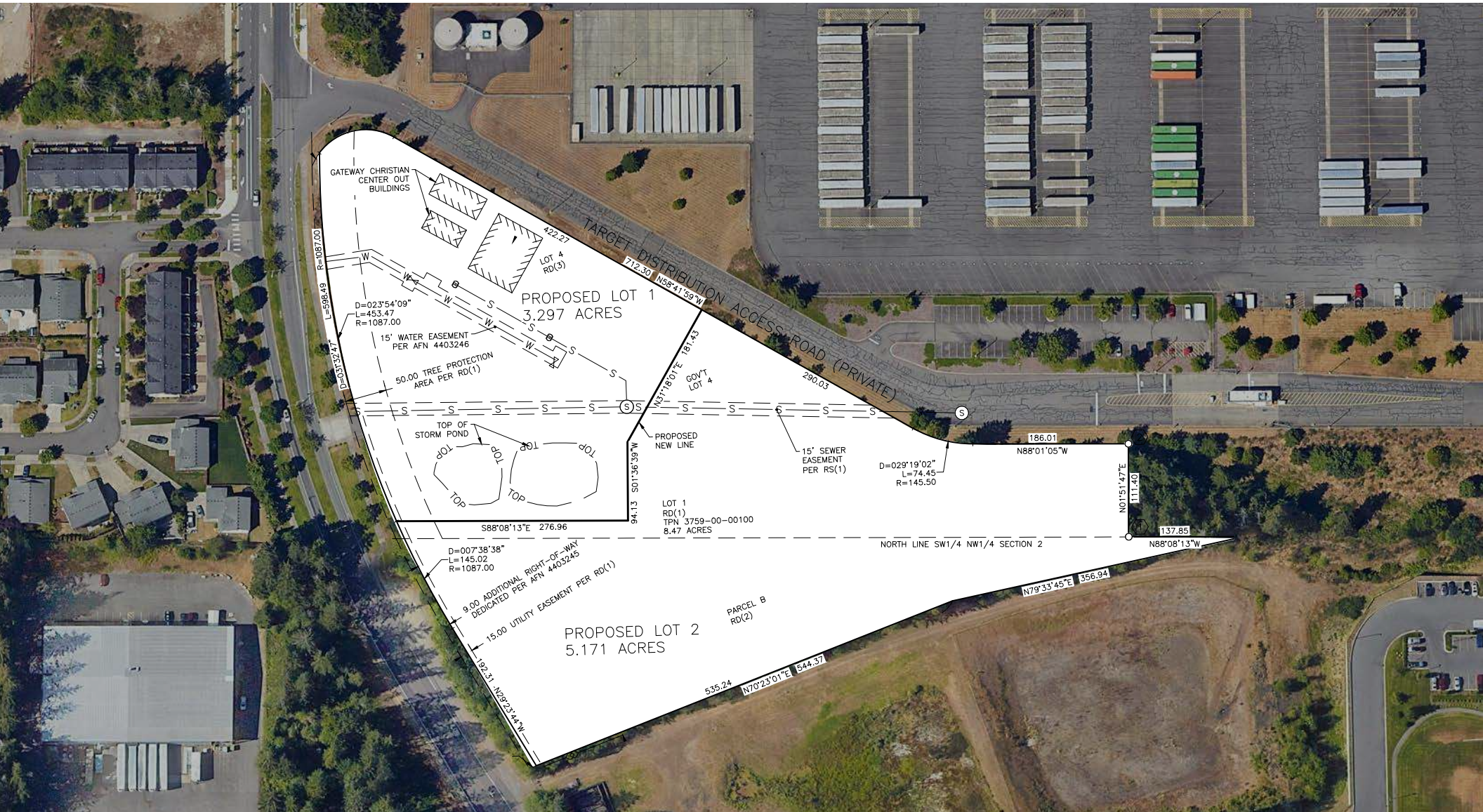


KIDDER.COM

This information supplied herein is from sources we deem reliable. It is provided without any representation, warranty, or guarantee, expressed or implied as to its accuracy. Prospective Buyer or Tenant should conduct an independent investigation and verification of all matters deemed to be material, including, but not limited to, statements of income and expenses. Consult your attorney, accountant, or other professional advisor. All Kidder Mathews designs are the sole property of Kidder Mathews. Branded materials and layouts are not authorized for use by any other firm or person.



FOR SALE



KIDDER.COM

This information supplied herein is from sources we deem reliable. It is provided without any representation, warranty, or guarantee, expressed or implied as to its accuracy. Prospective Buyer or Tenant should conduct an independent investigation and verification of all matters deemed to be material, including, but not limited to, statements of income and expenses. Consult your attorney, accountant, or other professional advisor. All Kidder Mathews designs are the sole property of Kidder Mathews. Branded materials and layouts are not authorized for use by any other firm or person.



FOR SALE



KIDDER.COM

This information supplied herein is from sources we deem reliable. It is provided without any representation, warranty, or guarantee, expressed or implied as to its accuracy. Prospective Buyer or Tenant should conduct an independent investigation and verification of all matters deemed to be material, including, but not limited to, statements of income and expenses. Consult your attorney, accountant, or other professional advisor. All Kidder Mathews designs are the sole property of Kidder Mathews. Branded materials and layouts are not authorized for use by any other firm or person.

DEMOGRAPHICS

POPULATION

| | 1 Mile | 3 Miles | 5 Miles |
|----------------|--------|---------|---------|
| 2010 CENSUS | 2,719 | 29,698 | 75,136 |
| 2020 CENSUS | 4,873 | 40,236 | 91,530 |
| 2024 ESTIMATED | 5,590 | 41,465 | 94,010 |
| 2029 PROJECTED | 6,572 | 42,396 | 95,356 |

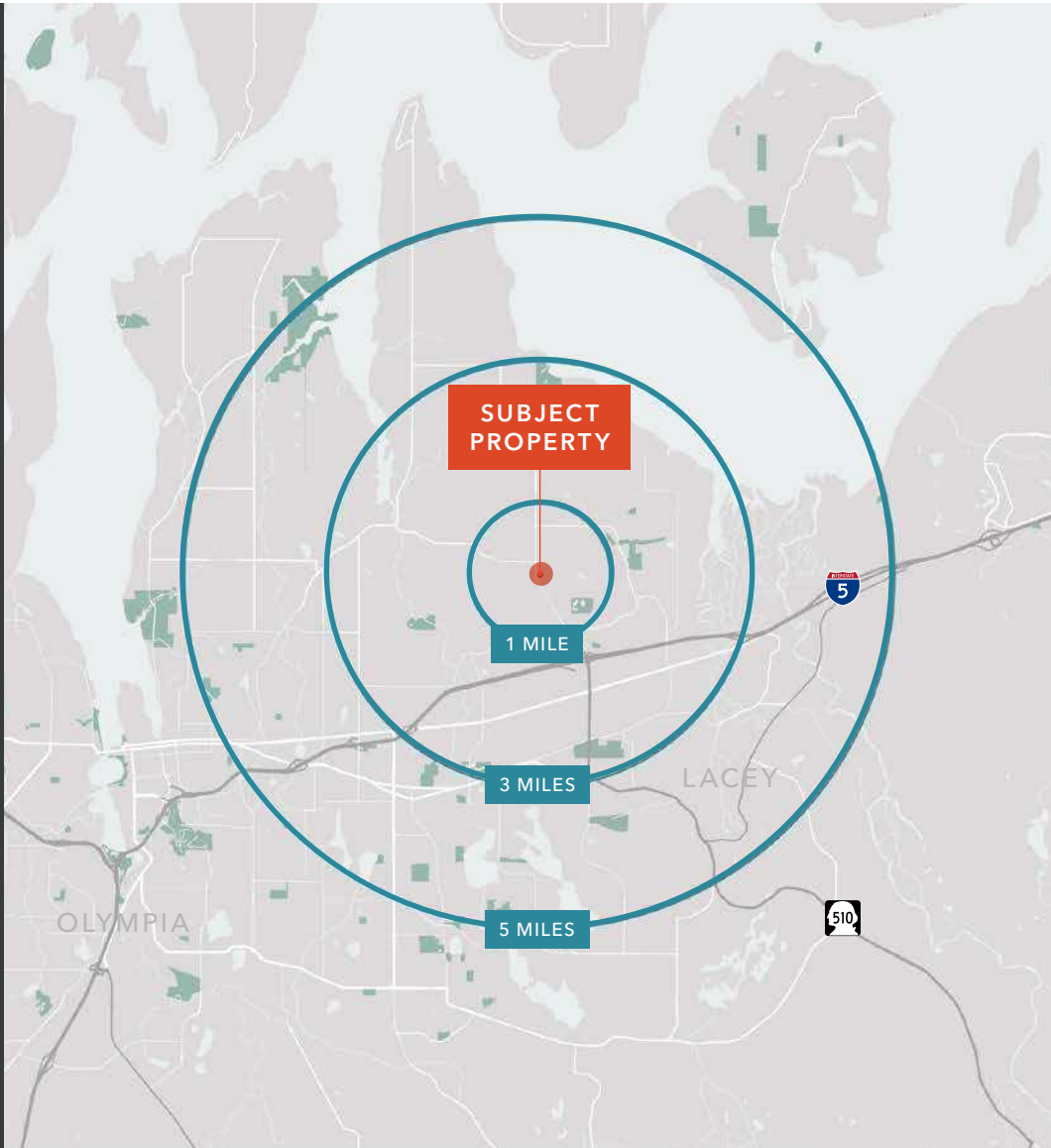
MEDIAN AGE & GENDER

| | 1 Mile | 3 Miles | 5 Miles |
|------------|--------|---------|---------|
| MEDIAN AGE | 36.6 | 38.0 | 39.0 |
| % FEMALE | 50.8% | 50.3% | 50.3% |
| % MALE | 49.2% | 49.7% | 49.7% |

HOUSEHOLD INCOME

| | 1 Mile | 3 Miles | 5 Miles |
|------------------------|-----------|-----------|-----------|
| 2024 MEDIAN | \$100,279 | \$96,465 | \$89,867 |
| 2029 MEDIAN PROJECTED | \$101,627 | \$99,068 | \$92,222 |
| 2024 AVERAGE | \$124,110 | \$123,726 | \$121,531 |
| 2029 AVERAGE PROJECTED | \$128,928 | \$129,576 | \$121,531 |

Data Source: ©2023, Sites USA



KIDDER.COM

This information supplied herein is from sources we deem reliable. It is provided without any representation, warranty, or guarantee, expressed or implied as to its accuracy. Prospective Buyer or Tenant should conduct an independent investigation and verification of all matters deemed to be material, including, but not limited to, statements of income and expenses. Consult your attorney, accountant, or other professional advisor. All Kidder Mathews designs are the sole property of Kidder Mathews. Branded materials and layouts are not authorized for use by any other firm or person.