



THE ANDOVER
COMPANY, INC.

CORFAC INTERNATIONAL

EAST HILL 240TH

10056 SE 240TH | KENT, WA



FOR SALE

Commercial Zoned Development Site

BRUCE CLARKSON | PRINCIPAL

206.399.6218 | bclarkson@andoverco.com

\$2,125,000

SALE PRICE

35,662 SF

LAND SIZE

10056 SE 240TH STREET

*36.662 SF Lot Available for Sale
in Kent*

35,662 SF lot / 0.82 Acres (per King County records

CC-MV Zoning (Kent)

\$2,125,000.00 sale price

Center of the East Hill Commercial Zone

Close Proximity to I-405/SR-167/ I-5

35,662

TOTAL SF

\$2,125M | \$59/SF

SALE PRICE

CC-MV

COMMUNITY COMMERCIAL /MIXED USE



Design Summary

CC-MU (COMMUNITY, COMMERCIAL , MIXED-USE)

Allows for a wide range of uses

- Daily Traffic Count of Over 27,000 Vehicles
- Established Visibility- Join A Neighborhood Center of Popeye's, Starbucks, & McLendon Hardware
- Optimized for Developments that Satisfy Commercial Needs of the Vast Surrounding Residential Neighborhoods of East Hill



3RD PARTY REPORTS AVAILABLE

*Massing Study
Site Plan Example
Phase 1*

SCAN CODE



SINGLE-TENANT RETAIL



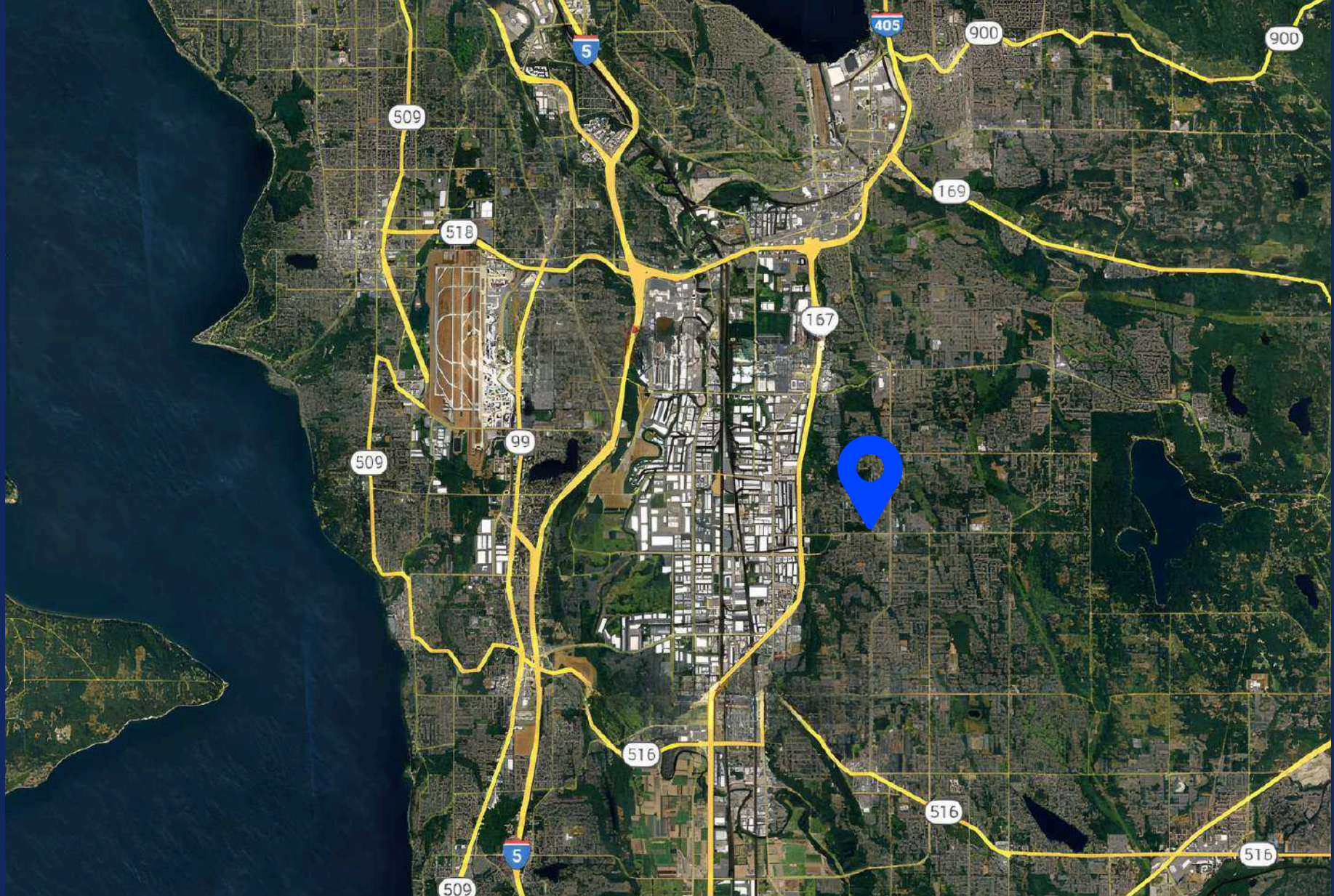
MULTIFAMILY HOUSING



CAR WASH



DRIVE-THROUGH SERVICES



For More Information, Contact

BRUCE CLARKSON | PRINCIPAL
206.399.6218 | bclarkson@andoverco.com



We obtained the information above from sources we believe to be reliable. However, we have not verified its accuracy and make no guarantee, warranty or representation about it. It is submitted subject to the possibility of errors, omissions, change of price, rental or other conditions, prior sale, lease or financing, or withdrawal without notice. We include projections, opinions, assumptions or estimates for example only, and they may not represent current or future performance of the property. You and your tax and legal advisors should conduct your own investigation of the property and transaction.