

# OFFICE BUILDING FOR SALE



📍 8727 W Hwy 2  
Airway Heights, WA 99224

Offered at  
**\$2,500,000**

Parcel: 25292.9055

10,214 sqft multi-tenant, professional office building on 1.49 acres, located in Spokane on Highway 2 north of the Spokane International Airport with excellent visibility and traffic counts of 28,000 cars per day. The 5,134 square foot main level is now vacant and available for a partial owner/user and was originally built for Bank of Whitman and features a large open bull-pen area, 2 work areas, 6 private offices, built in reception area, two restrooms and bank vault, glass viewing windows to drive through and working pneumatic tube system.

The 5,080 square foot second-floor is current occupied by a long term tenant with over five years remaining on the lease. The second floor features a large bull-pen area, built in reception area, ten private offices, large conference room with additional storage, janitor closet, two dedicated mechanical rooms, breakroom and two restrooms. The suite also has a separate back entrance/exit. The building offers good parking and a nicely landscaped. Building amenities include an elevator, interior reader board and monument sign. Approx 3 miles from Interstate 90.

📞 **ROB KANNAPIEN** 208.704.3832  
robk@ccim.net

**CCIMTEAM.COM**



**COLDWELL BANKER  
COMMERCIAL**

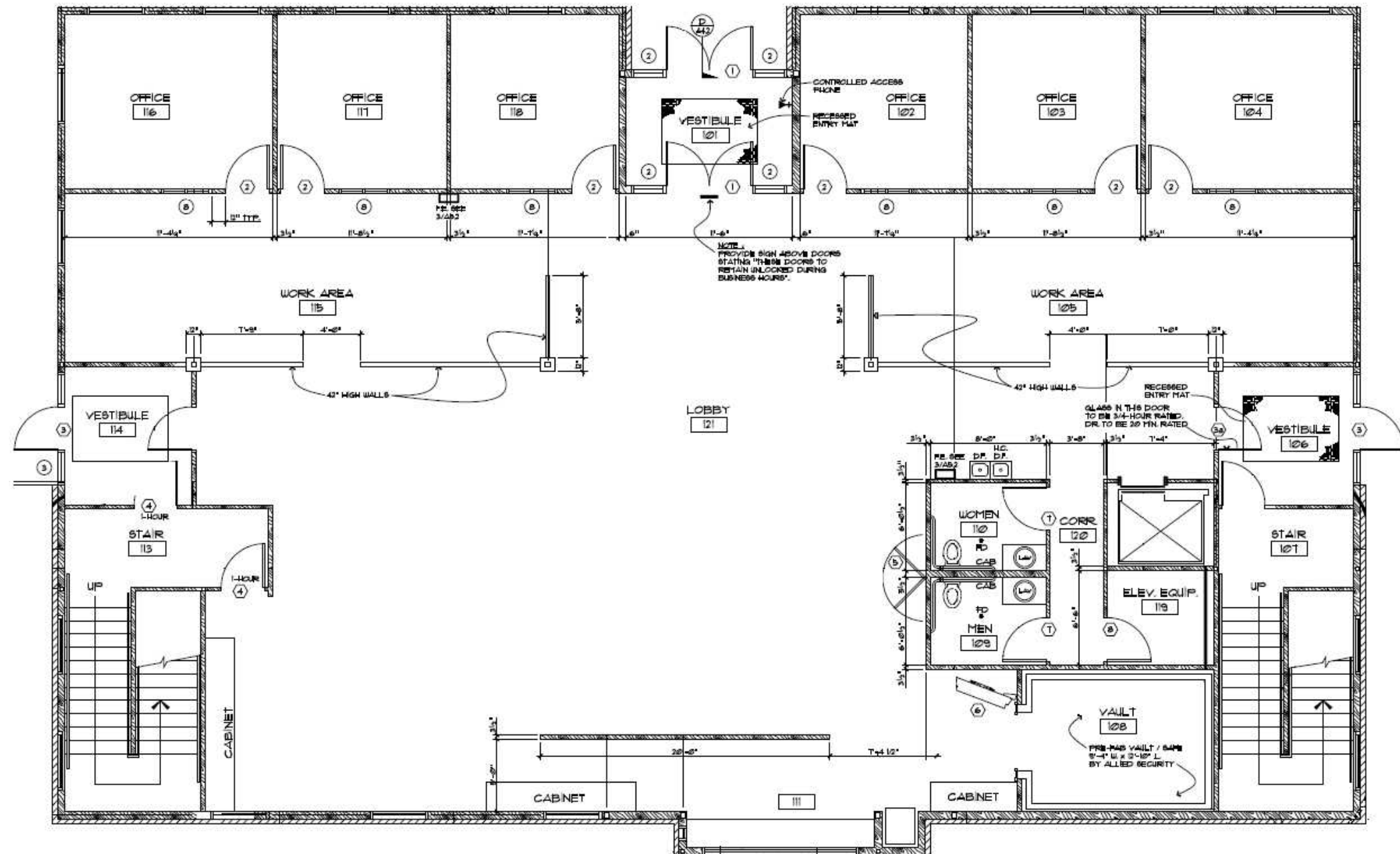
**SCHNEIDMILLER REALTY**  
2000 Northwest Blvd  
CdA, ID 83814



Data is deemed reliable, no warranties or representations expressed or implied. Broker not responsible for changes, errors, omissions, or prior sale without notice. All critical measurements shall be done by Lessee or Buyer.

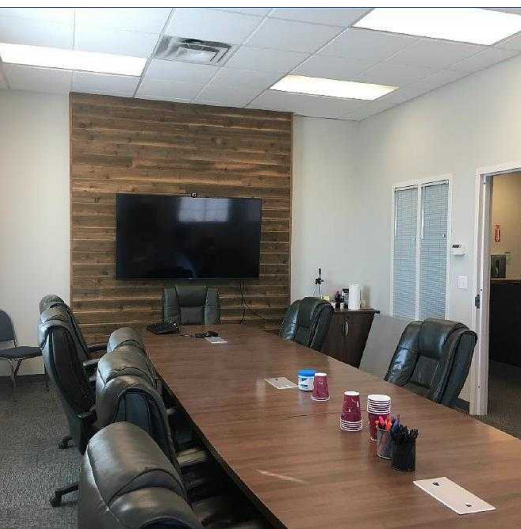
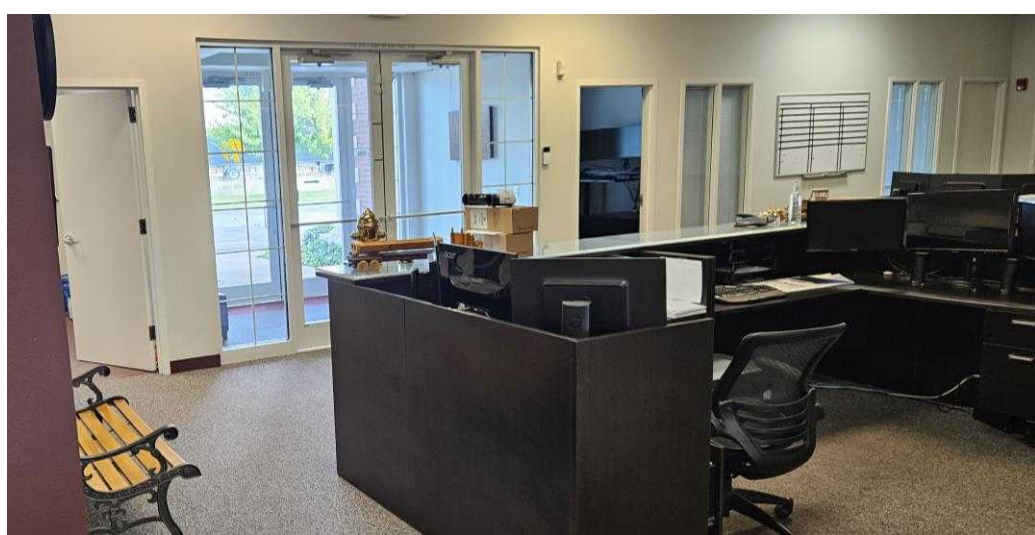


## MAIN FLOOR PLAN



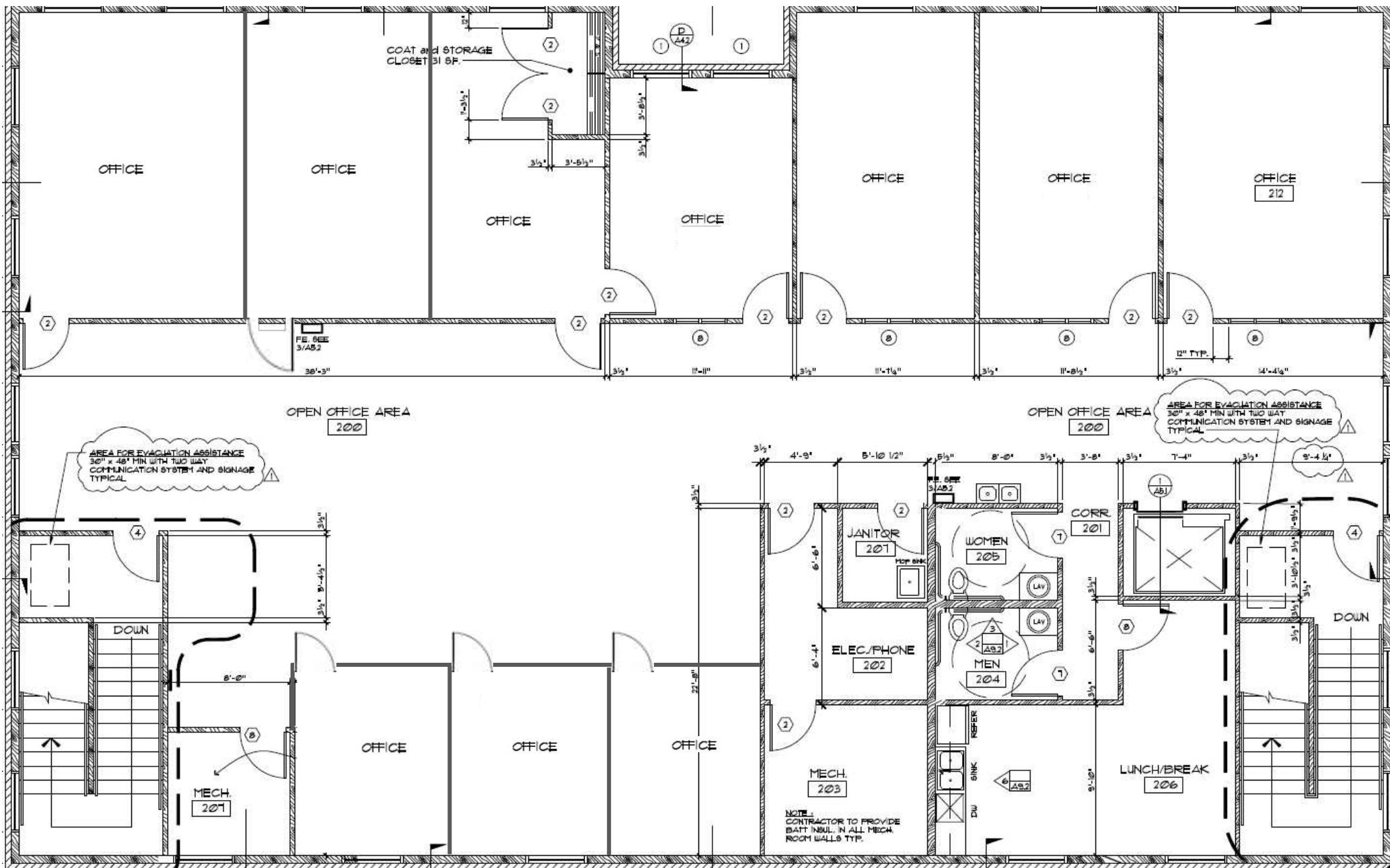


# MAIN FLOOR SUITE





# UPPER FLOOR PLAN



**ROB KANNAPIEN**

208.704.3832  
robk@ccim.net

**CCIMTEAM.COM**



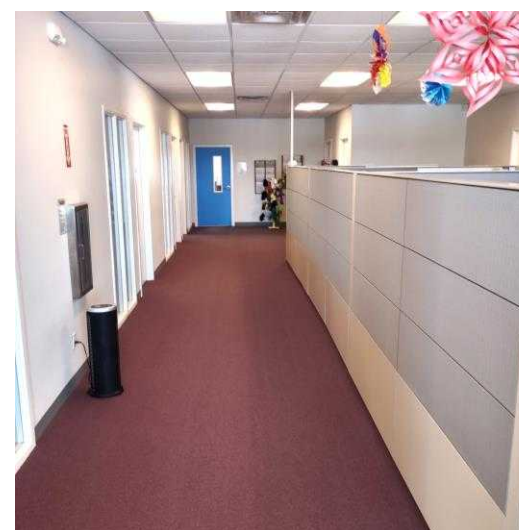
**COLDWELL BANKER  
COMMERCIAL**

**SCHNEIDMILLER REALTY**  
2000 Northwest Blvd  
Cd, ID 83814





# UPPER FLOOR SUITE





CLOSE UP

Whitman Campus

Technology Blvd.

Highway 2



**ROB KANNAPIEN**

208.704.3832  
robk@ccim.net

**CCIMTEAM.COM**



**COLDWELL BANKER  
COMMERCIAL**

**SCHNEIDMILLER REALTY**  
2000 Northwest Blvd  
CdA, ID 83814



Data is deemed reliable, no warranties or representations expressed or implied. Broker not responsible for changes, errors, omissions, or prior sale without notice. All critical measurements shall be done by Lessee or Buyer.



# NEARBY BUSINESSES



**ROB KANNAPIEN**

208.704.3832  
robk@ccim.net

**CCIMTEAM.COM**



**COLDWELL BANKER  
COMMERCIAL**

**SCHNEIDMILLER REALTY**  
2000 Northwest Blvd  
CdA, ID 83814



Data is deemed reliable, no warranties or representations expressed or implied. Broker not responsible for changes, errors, omissions, or prior sale without notice. All critical measurements shall be done by Lessee or Buyer.



# LOCATION



**ROB KANNAPIEN**

208.704.3832  
robk@ccim.net

**CCIMTEAM.COM**



**COLDWELL BANKER  
COMMERCIAL**

**SCHNEIDMILLER REALTY**  
2000 Northwest Blvd  
CdA, ID 83814



Data is deemed reliable, no warranties or representations expressed or implied. Broker not responsible for changes, errors, omissions, or prior sale without notice. All critical measurements shall be done by Lessee or Buyer.