

# MCDERMOTT VILLAGE

Meridian, Idaho

Parcel #'s S0433336125, S0433336093, & S0433336060

SALE PRICE: \$8.28/PSF – \$4,800,000 | 13.265 ACRES | ZONING- RURAL-URBAN TRANSITION



**Jennifer McEntee**

Senior Director

Office | Capital Markets

D: +1 208 287 9495

M: +1 208 941 9568

[jennifer.mcentee@cushwake.com](mailto:jennifer.mcentee@cushwake.com)

**Bree Wells, MBA**

Director

Office | Capitol Markets

D: +1 208 287 9492

M: +1 208 350 9709

[bree.wells@cushwake.com](mailto:bree.wells@cushwake.com)

**Braydon Torres, MBA**

Associate

Office | Capital Markets

D: +1 208 207 9485

M: +1 208 590 9423

[braydon.torres@cushwake.com](mailto:braydon.torres@cushwake.com)



©2025 Cushman & Wakefield. All rights reserved. The information contained in this communication is strictly confidential. This information has been obtained from sources believed to be reliable but has not been verified. NO WARRANTY OR REPRESENTATION, EXPRESS OR IMPLIED, IS MADE AS TO THE CONDITION OF THE PROPERTY (OR PROPERTIES) REFERENCED HEREIN OR AS TO THE ACCURACY OR COMPLETENESS OF THE INFORMATION CONTAINED HEREIN, AND SAME IS SUBMITTED SUBJECT TO ERRORS, OMISSIONS, CHANGE OF PRICE, RENTAL OR OTHER CONDITIONS, WITHDRAWAL WITHOUT NOTICE, AND TO ANY SPECIAL LISTING CONDITIONS IMPOSED BY THE PROPERTY OWNER(S). ANY PROJECTIONS, OPINIONS OR ESTIMATES ARE SUBJECT TO UNCERTAINTY AND DO NOT SIGNIFY CURRENT OR FUTURE PROPERTY PERFORMANCE.

**CUSHMANWAKEFIELD.COM**



# MCDERMOTT VILLAGE

Meridian, Idaho

## MARKETING DESCRIPTION

Prime 13.26-Acre Development Opportunity in Meridian, Idaho

**Offered at: \$8.28 PSF - \$4,800,000**

Strategically positioned in one of the Treasure Valley's fastest-growing areas, this 13.256-acre parcel offers a rare opportunity for investors, developers, or visionary builders. This property is zoned Rural-Urban Transition, providing flexibility for future development while maintaining the charm of rural surroundings. Explore mixed-use potential, or land bank in a high-demand area, this property offers excellent access, visibility, and long-term value. Just minutes from I-84, retail centers, and major employers, the site combines peaceful open space with urban convenience.

### KEY HIGHLIGHTS:

- **Zoning:** Rural-Urban Transition (RUT) – adaptable for future growth
- **Size:** 13.256 acres
- **Price:** \$8.28 PSF - \$4,800,000
- Flat topography and easily accessible utilities nearby
- Located just off first major on/off ramp of new FWY 16
- Close proximity to Owyhee High School
- Three houses on the property generate \$7,700 per month





# MCDERMOTT VILLAGE

Meridian, Idaho

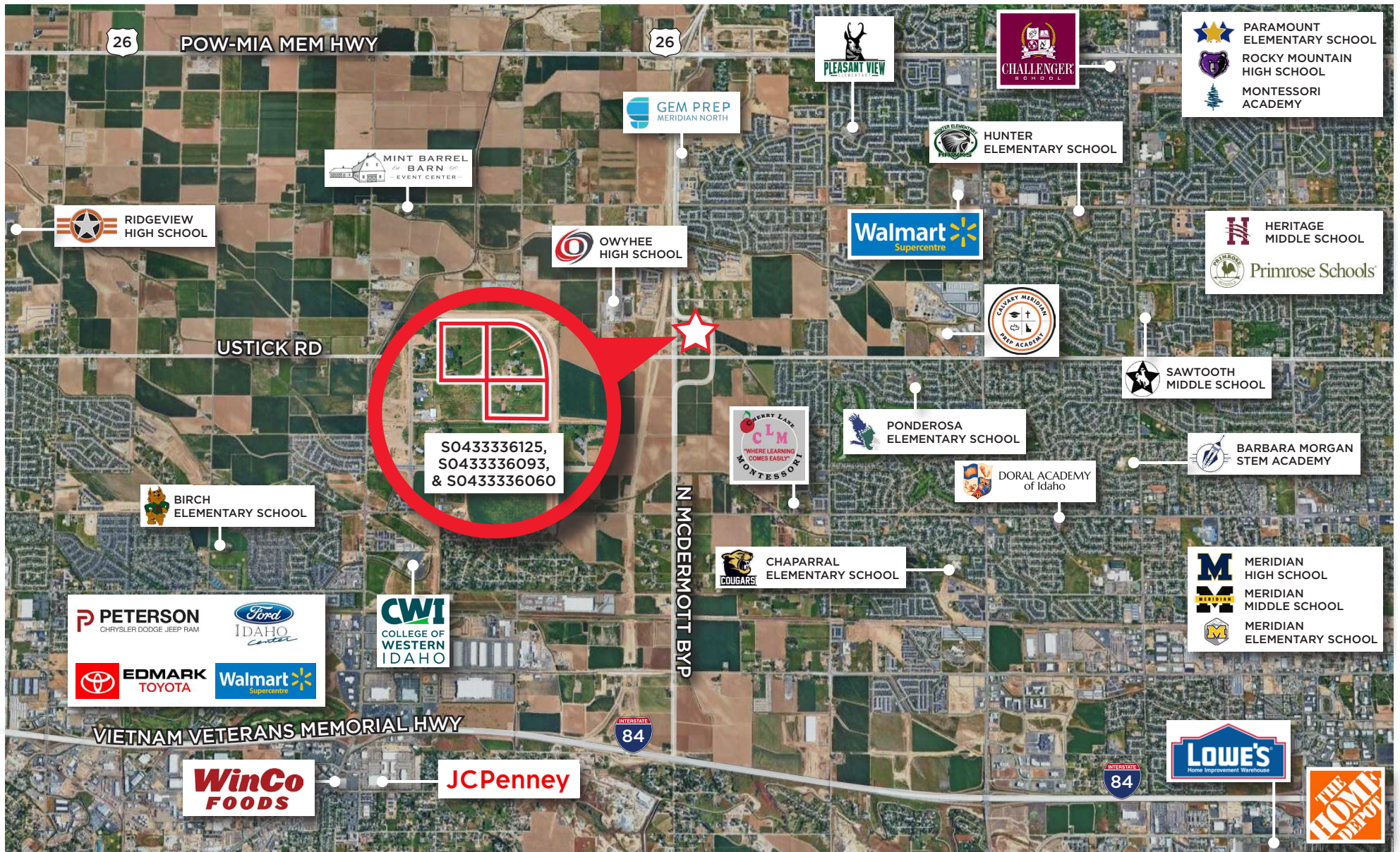
## PHOTOS





**MCDERMOTT VILLAGE**  
Meridian, Idaho

## AERIAL MAP



# MCDERMOTT VILLAGE

Meridian, Idaho

13.265 ACRES | ZONING- RURAL-URBAN TRANSITION

**Jennifer McEntee**

Senior Director – Office | Capital Markets

D: +1 208 287 9495

M: +1 208 941 9568

[jennifer.mcentee@cushwake.com](mailto:jennifer.mcentee@cushwake.com)

**Bree Wells, MBA**

Director – Office | Capitol Markets

D: +1 208 287 9492

M: +1 208 350 9709

[bree.wells@cushwake.com](mailto:bree.wells@cushwake.com)

**Braydon Torres, MBA**

Associate – Office | Capital Markets

D: +1 208 207 9485

M: +1 208 590 9423

[braydon.torres@cushwake.com](mailto:braydon.torres@cushwake.com)

**CUSHMANWAKEFIELD.COM**



©2025 Cushman & Wakefield. All rights reserved. The information contained in this communication is strictly confidential. This information has been obtained from sources believed to be reliable but has not been verified. NO WARRANTY OR REPRESENTATION, EXPRESS OR IMPLIED, IS MADE AS TO THE CONDITION OF THE PROPERTY (OR PROPERTIES) REFERENCED HEREIN OR AS TO THE ACCURACY OR COMPLETENESS OF THE INFORMATION CONTAINED HEREIN, AND SAME IS SUBMITTED SUBJECT TO ERRORS, OMISSIONS, CHANGE OF PRICE, RENTAL OR OTHER CONDITIONS, WITHDRAWAL WITHOUT NOTICE, AND TO ANY SPECIAL LISTING CONDITIONS IMPOSED BY THE PROPERTY OWNER(S). ANY PROJECTIONS, OPINIONS OR ESTIMATES ARE SUBJECT TO UNCERTAINTY AND DO NOT SIGNIFY CURRENT OR FUTURE PROPERTY PERFORMANCE.