



## High Tower Business Park

### Electric Avenue and Soda Road

**LOCATION:** One mile East of Amazon Distribution Center. 5 Miles to Downtown Spokane. 2 Miles to Air Terminal. 1 Mile to General Aviation Terminal. Close to future Kenworth Truck Sales.

**SITE:** Parcel Number: 24051.9090

**ZONING:** Light Industrial Zoning. Highly flexible. Ok for Hospitality, office, medical, etc.

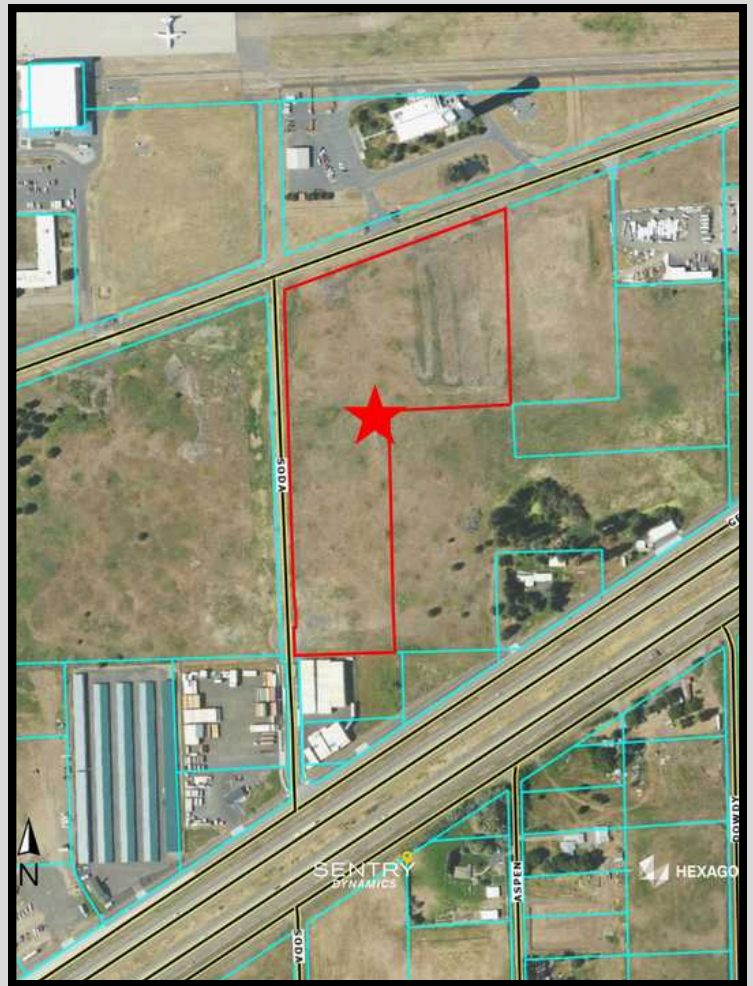
**UTILITIES:** Power: Inland Power & Avista. Natural Gas: Avista. Water/Sewer: City of Spokane

**IMPROVEMENTS:** Bordered on West by newly constructed Soda road. \$50,000,000 in new public improvements recently completed at Interchanges 272 & 276.

**SALES PRICE:** \$3,348,000.00      Price \$6.00/SF

**PETE THOMPSON**  
(509) 995-2919 [pete@stonemark.org](mailto:pete@stonemark.org)

  
**FIRST LOOK**  
— REAL ESTATE —  
COMMERCIAL



**FIRST LOOK**  
— REAL ESTATE —  
COMMERCIAL

**PETE THOMPSON**  
(509) 995-2919  
pete@stonemark.org