

INDUSTRIAL LAND FOR SALE



📍 4224 E Riverside Avenue,
Spokane, WA 99202

Offered at
\$549,000

Nice fully secured 1.5 acre lot in Spokane, Washington just north of the Sprague and Havana intersection. Fenced with gated access off Havana or shared access off Main Avenue. Zoned heavy industrial.



ROB KANNAPIEN

208.704.3832
robk@ccim.net



CCIMTEAM.COM

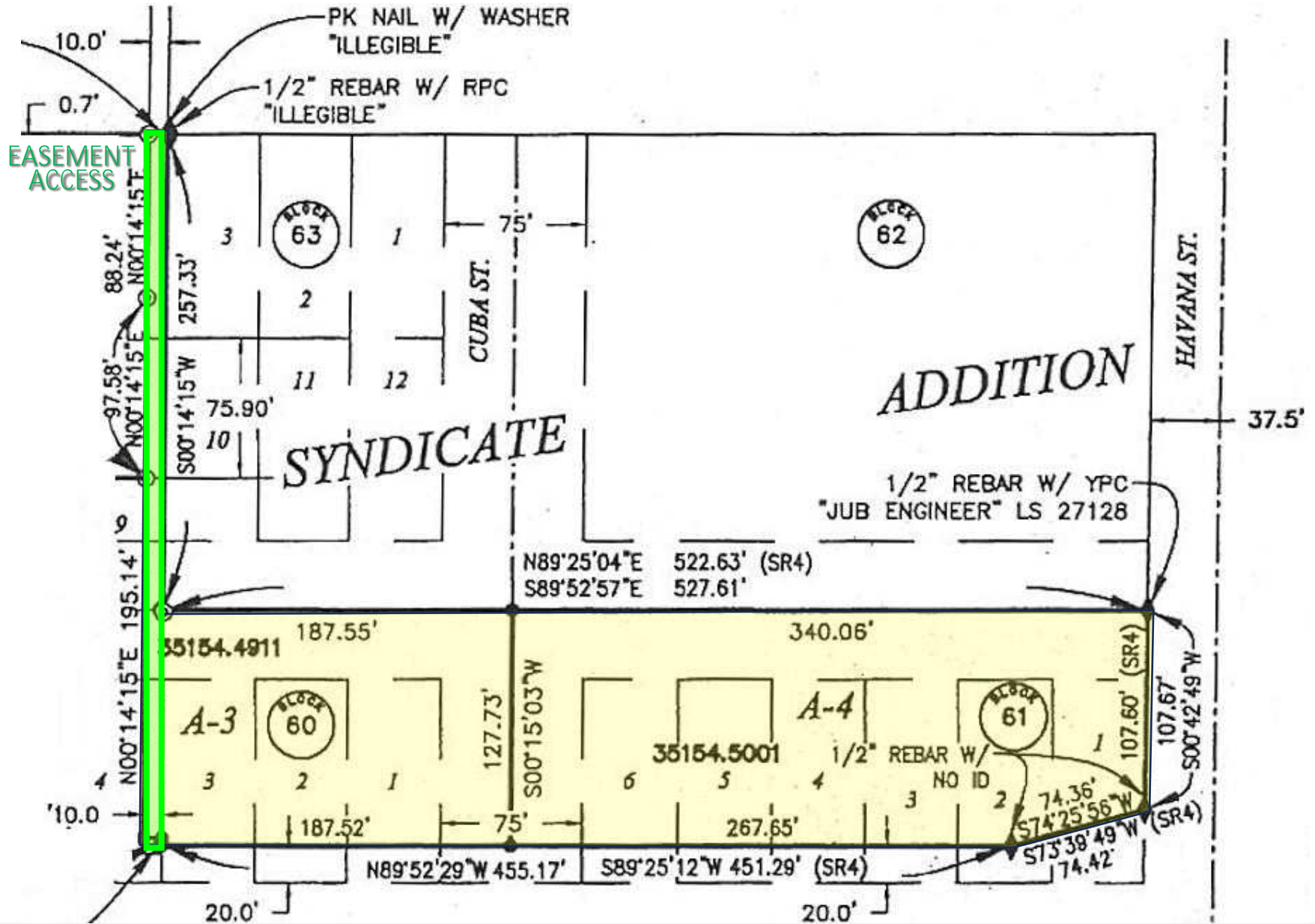


**COLDWELL BANKER
COMMERCIAL**

SCHNEIDMILLER REALTY
2000 Northwest Blvd, CdA, ID 83814



SURVEY MAP



 **ROB KANNAPIEN** 208.704.3832
robk@ccim.net  **CCIMTEAM.COM**

**COLDWELL BANKER
COMMERCIAL**

SCHNEIDMILLER REALTY

2000 Northwest Blvd, CdA, ID 83814

CCIM



Data is deemed reliable, no warranties or representations expressed or implied. Broker not responsible for changes, errors, omissions, or prior sale without notice. All critical measurements shall be done by Lessee or Buyer.



ROB KANNAPIEN

208.704.3832
robk@ccim.net



CCIMTEAM.COM



**COLDWELL BANKER
COMMERCIAL**

SCHNEIDMILLER REALTY
2000 Northwest Blvd, CdA, ID 83814

