

144TH & CANYON ROAD

FOR SALE: \$2,700,000

5425 144TH ST E | PUYALLUP WA 98375

PERMIT-READY, ENTITLED LAND IN EC ZONING



SALE INFORMATION

Land Size

99,334 SF

Sale Price

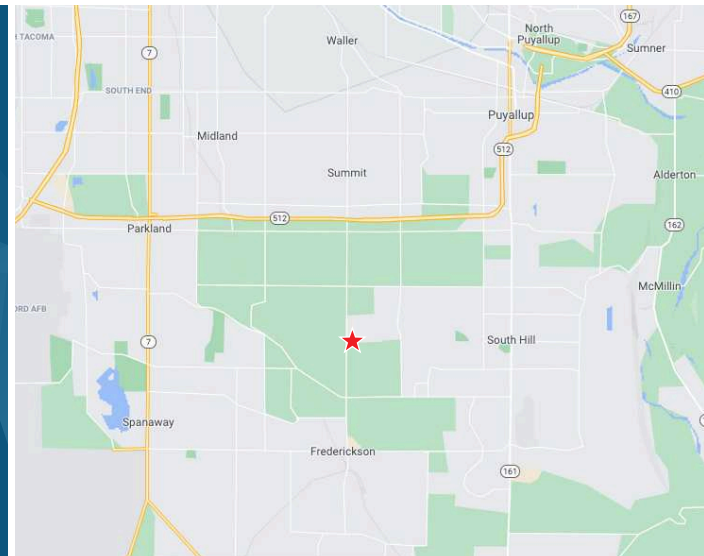
\$2,700,000

Zoning

Employment Corridor

PROPERTY FEATURES

- Permit ready, fully entitled 2.28 acres on the NE corner of 144th and Canyon Road E at signalized intersection.
- Access is from 144th, so the expense of a collector/distributor lane is not needed. A rare non-wetland Canyon Road location.
- Completely permitted for a 20' tall, 7,500 SF building along with a 3,125 SF indoor storage area, plus yard space. Permit can be modified and adapted for other designs or needs.
- Employment Corridor Zoning allows for a range of uses, including motor vehicle uses, multifamily, etc.
- Pierce County EC zoning allows for a variety of uses: shop, warehouse, retail, or industrial outdoor storage.
- Plans available for review by request.



TIM PAVOLKA

253.606.7610

tpavolka@neilwalter.com

All information references in this document are approximate. The information contained herein is contained from sources deemed reliable. It is provided without representation, warranty, or guarantee, expressed or implied as to accuracy. Prospective buyer or tenant should conduct its own independent investigation relating to the property, government codes and regulations, allowed uses, and all other matters, regardless of whether they are referred to or contained in this document.

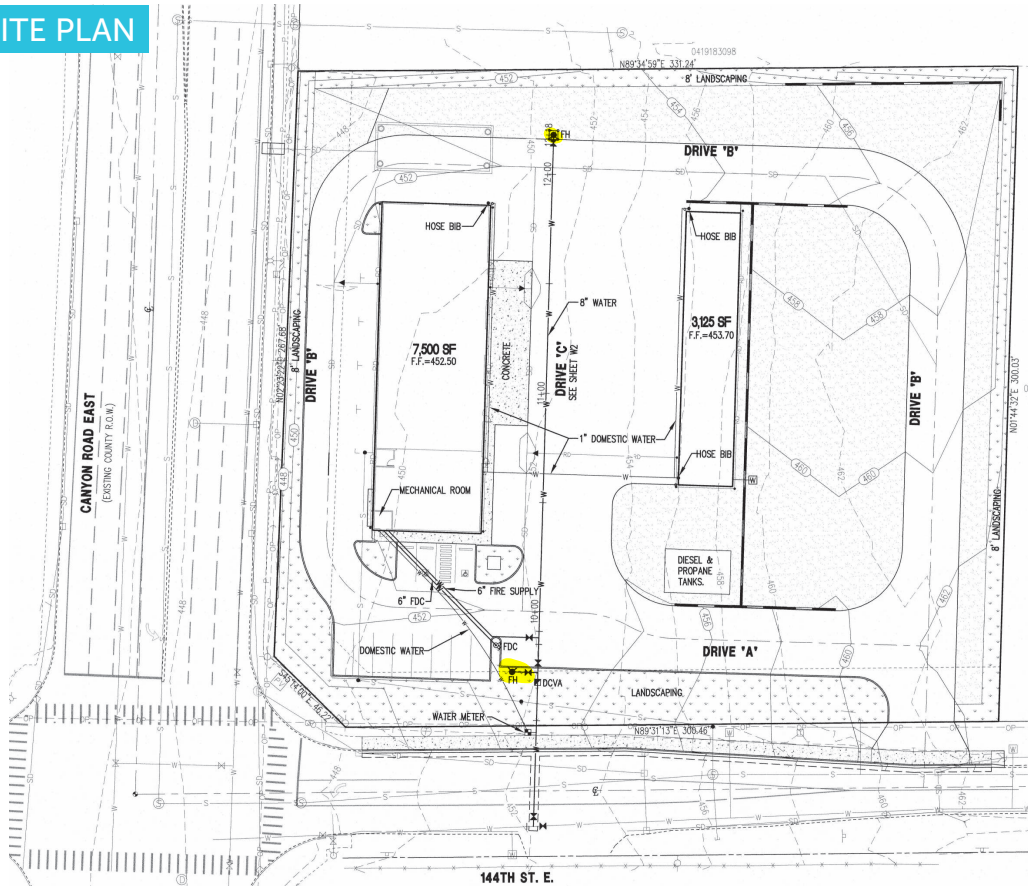
144TH & CANYON ROAD

5425 144TH ST E | PUYALLUP WA 98375



NEIL WALTER
COMPANY

POTENTIAL SITE PLAN



RENDERING OF PLANS



TIM PAVOLKA

253.606.7610

tpavolka@neilwalter.com

1940 East D St #100

Tacoma, WA 98421

253.779.8400

www.neilwalter.com

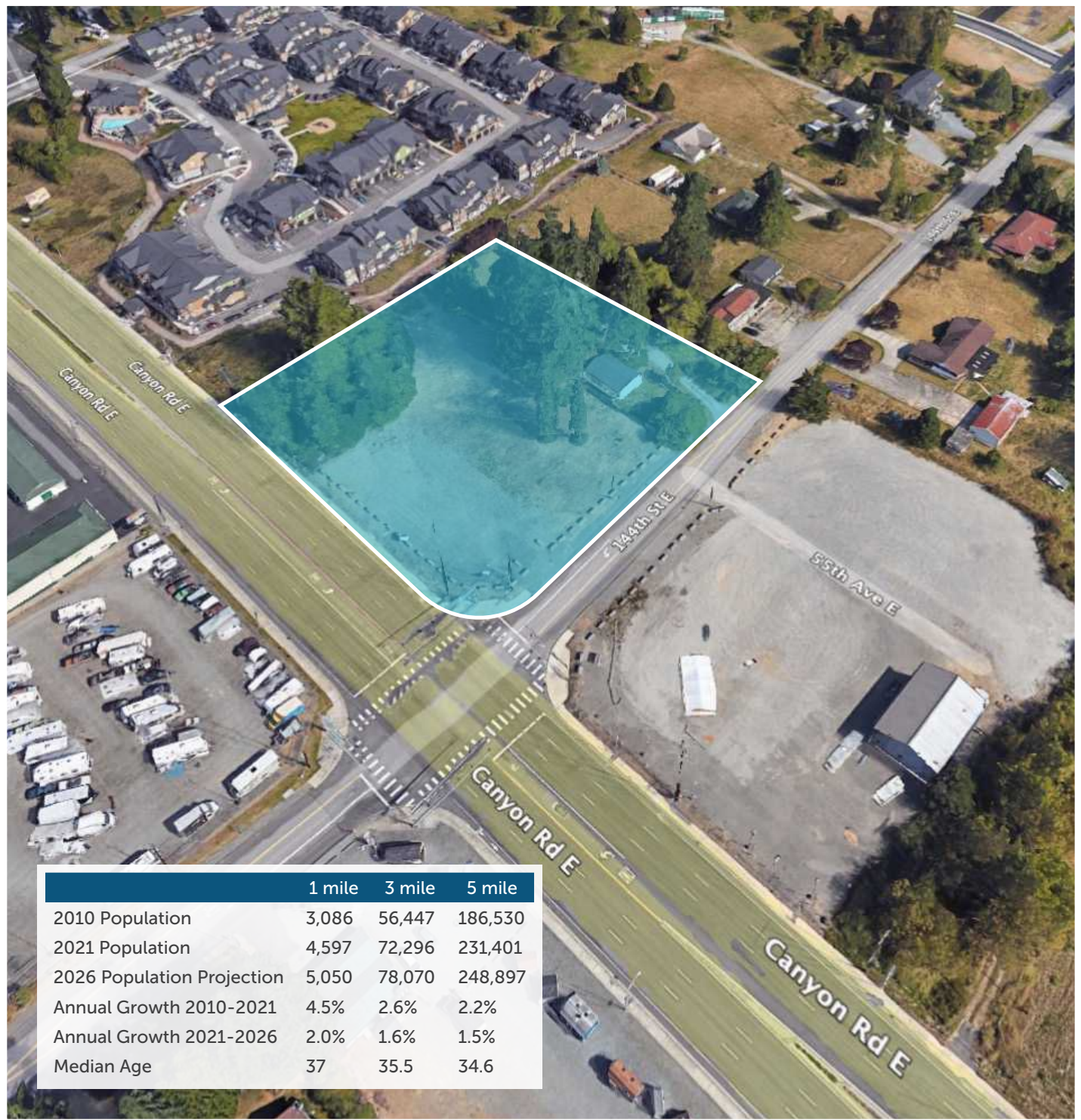
All information references in this document are approximate. The information contained herein is contained from sources deemed reliable. It is provided without representation, warranty, or guarantee, expressed or implied as to accuracy. Prospective buyer or tenant should conduct its own independent investigation relating to the property, government codes and regulations, allowed uses, and all other matters, regardless of whether they are referred to or contained in this document.

144TH & CANYON ROAD

5425 144TH ST E | PUYALLUP WA 98375



NEIL WALTER
COMPANY



	1 mile	3 mile	5 mile
2010 Population	3,086	56,447	186,530
2021 Population	4,597	72,296	231,401
2026 Population Projection	5,050	78,070	248,897
Annual Growth 2010-2021	4.5%	2.6%	2.2%
Annual Growth 2021-2026	2.0%	1.6%	1.5%
Median Age	37	35.5	34.6

TIM PAVOLKA

253.606.7610

tpavolka@neilwalter.com

1940 East D St #100

Tacoma, WA 98421

253.779.8400

www.neilwalter.com

All information references in this document are approximate. The information contained herein is contained from sources deemed reliable. It is provided without representation, warranty, or guarantee, expressed or implied as to accuracy. Prospective buyer or tenant should conduct its own independent investigation relating to the property, government codes and regulations, allowed uses, and all other matters, regardless of whether they are referred to or contained in this document.