

FOR SALE

1220 W HAYS ST.

Boise, ID 83702



1,500 SF AVAILABLE





BUILDING HIGHLIGHTS

- Historic home converted to office in Boise's highly desirable Near North End
- Floor plan includes reception/open work area, two private offices, two restrooms, kitchen/work room, and basement storage
- Private parking off alley in back and two City of Boise on-street parking permits
- R-3 Residential Urban zoning designation
- NC-O Near North End Character Overlay
- HD-O Historic Design Overlay

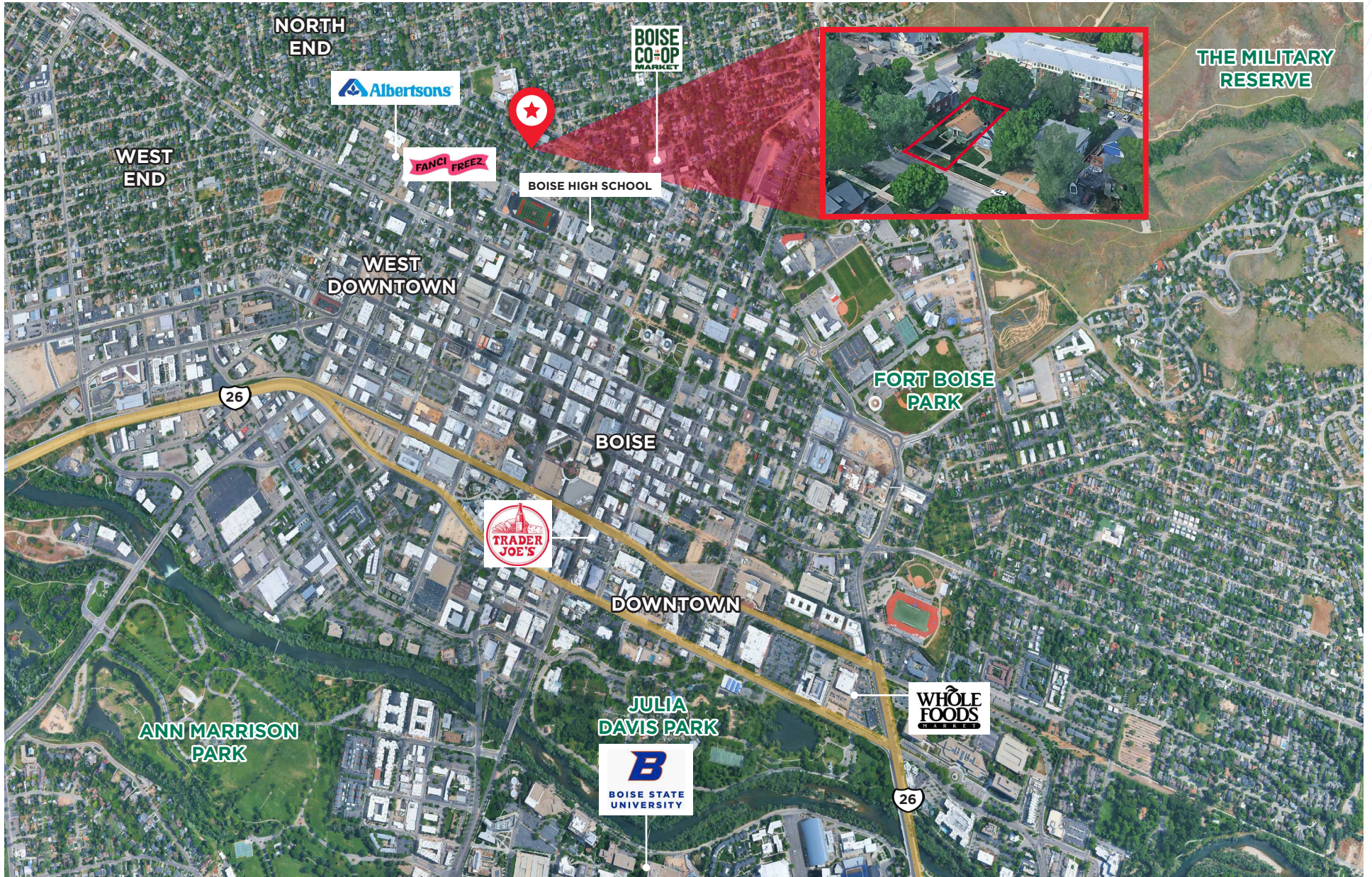
PRICE: \$549,000

LAND AREA: 0.14 AC

BUILDING AREA: 1,260 SF First Floor
240 SF Basement
1,500 SF Total

ZONING: R-3/NC-O/HD-O

THE LOCATION



FOR MORE INFORMATION, PLEASE CONTACT:

Dave Winder, CCIM
+1 208 866 0610
dave.winder@cushwake.com

Steve Vlassek
+1 208 287 8439
steve.vlassek@cushwake.com



©2025 Cushman & Wakefield. All rights reserved. The information contained in this communication is strictly confidential. This information has been obtained from sources believed to be reliable but has not been verified. NO WARRANTY OR REPRESENTATION, EXPRESS OR IMPLIED, IS MADE AS TO THE CONDITION OF THE PROPERTY (OR PROPERTIES) REFERENCED HEREIN OR AS TO THE ACCURACY OR COMPLETENESS OF THE INFORMATION CONTAINED HEREIN, AND SAME IS SUBMITTED SUBJECT TO ERRORS, OMISSIONS, CHANGE OF PRICE, RENTAL OR OTHER CONDITIONS, WITHDRAWAL WITHOUT NOTICE, AND TO ANY SPECIAL LISTING CONDITIONS IMPOSED BY THE PROPERTY OWNER(S). ANY PROJECTIONS, OPINIONS OR ESTIMATES ARE SUBJECT TO UNCERTAINTY AND DO NOT SIGNIFY CURRENT OR FUTURE PROPERTY PERFORMANCE.

