



FOR SALE

EVERETT SHOP & YARD

2810 34TH STREET | EVERETT, WA



THE ANDOVER
COMPANY, INC.

CORFAC INTERNATIONAL

JOSH KLEIN

(206) 357-5486

jklein@andoverco.com

PROPERTY HIGHLIGHTS

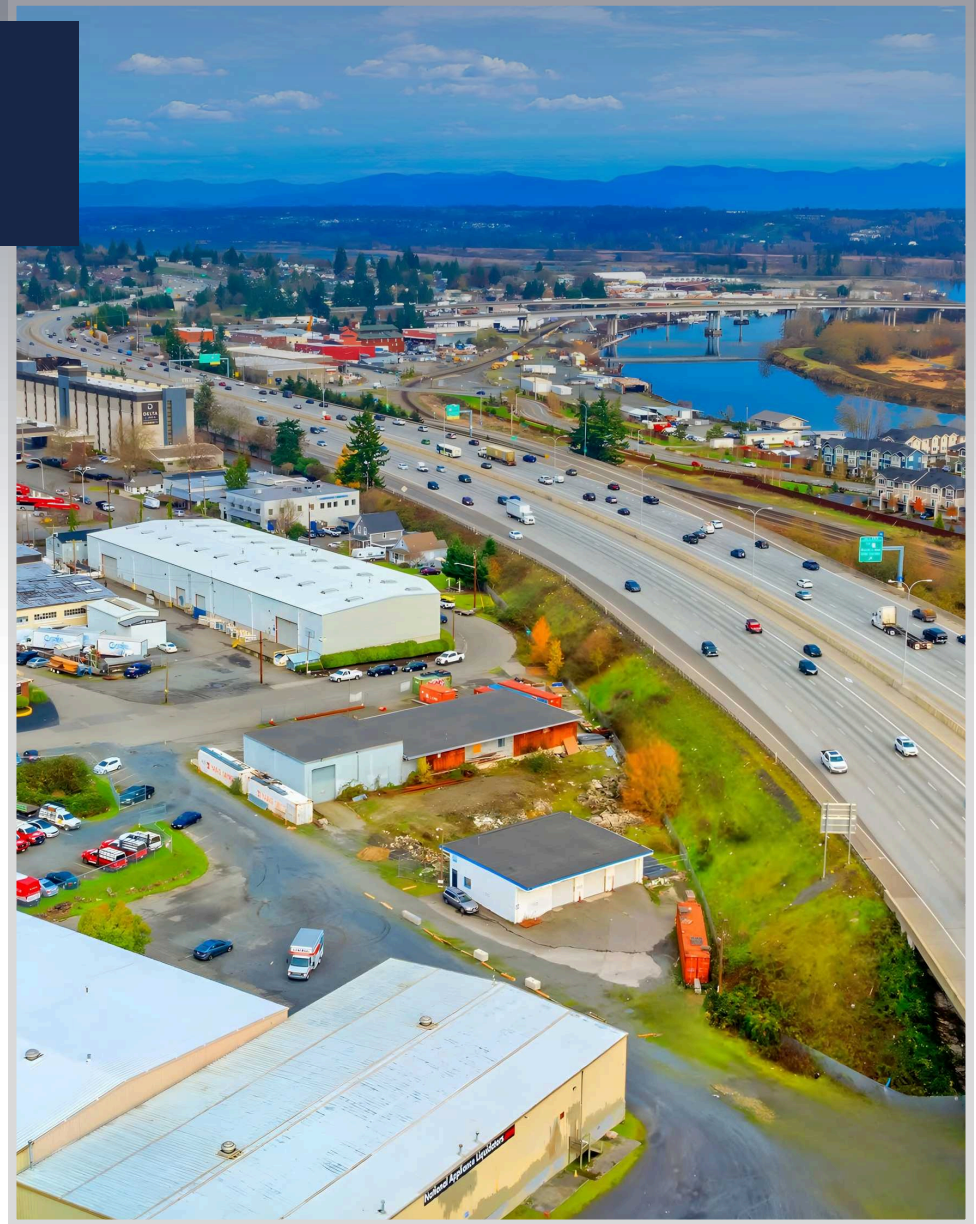
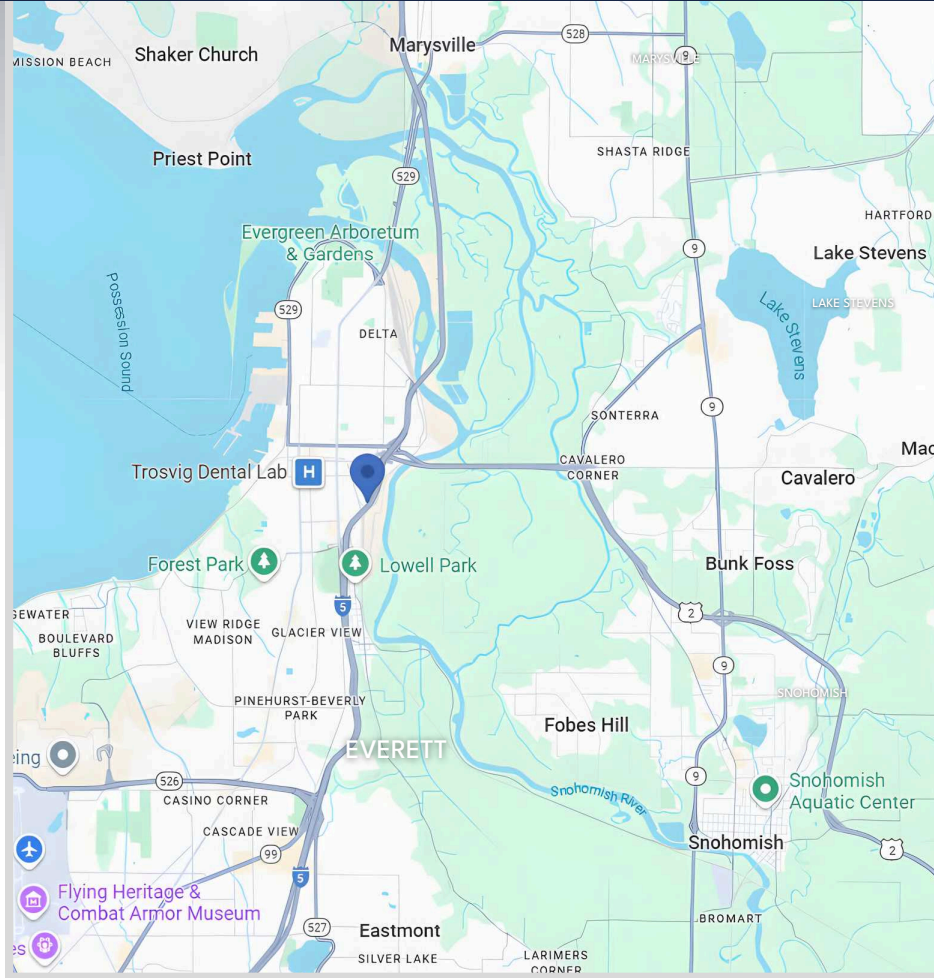
- Total Building Size: 8,958 SF
 - Building 1: 6,640 SF
 - Building 2: 2,318 SF
- Total Land Size: 1.35 AC
- 12-16' Clear Height
- 6 Grade Level Doors
- Parcel #29052900101000
- Zoning: LI-MU (Light-Industrial | Mixed Use)
- Great Access to I5 & US 2
- Owner/User or Investment Opportunity
- Asking Price: \$2,650,000

The information contained herein has been obtained from reliable sources, but is not guaranteed. A prospective buyer should verify each item relating to this property and all information contained herein.

FOR SALE | 2810 34TH STREET | EVERETT, WA



REGIONAL SNAPSHOT



FOR SALE | 2810 34TH STREET | EVERETT, WA

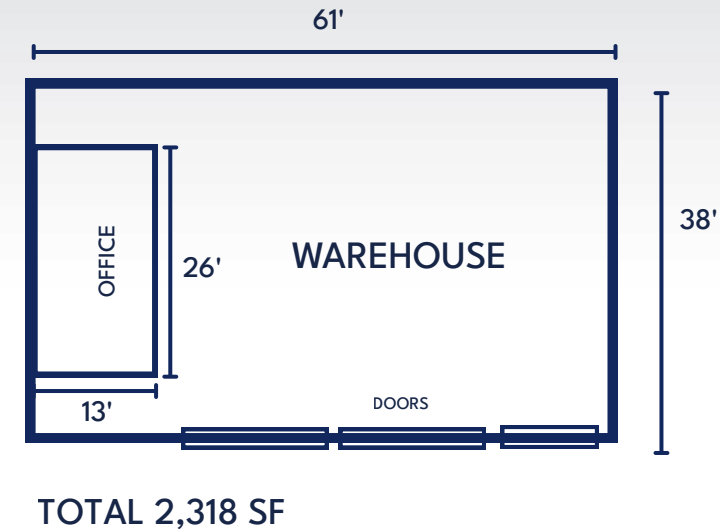
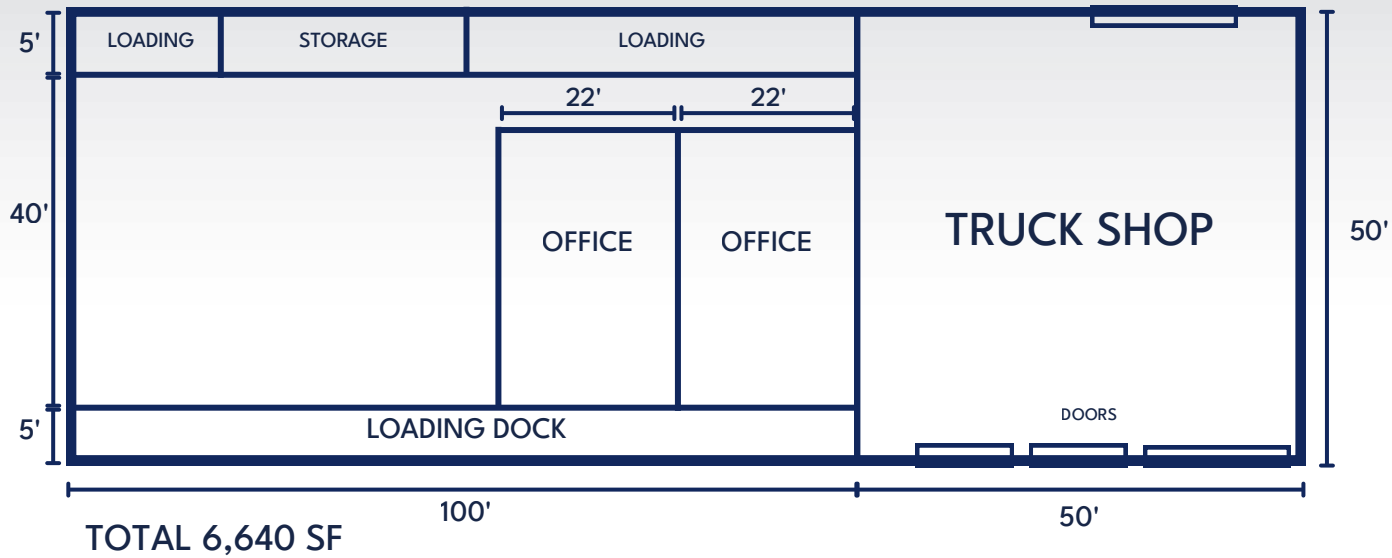


THE ANDOVER
COMPANY, INC.

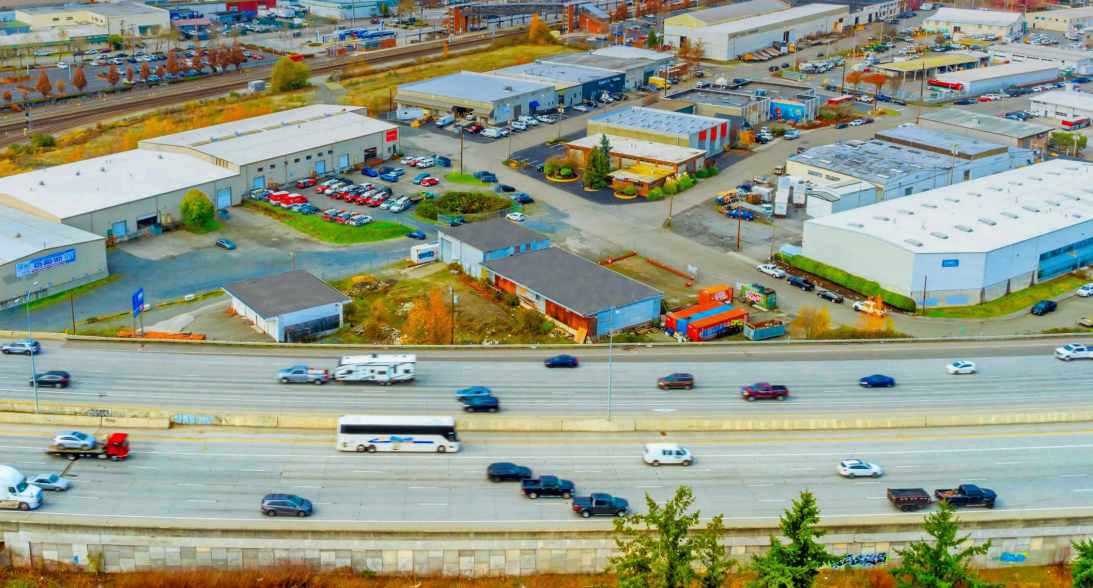
CORFAC INTERNATIONAL

FLOOR PLANS

**CONCEPTUAL- NOT TO SCALE



FOR SALE | 2810 34TH STREET | EVERETT, WA



JOSH KLEIN | VICE PRESIDENT
206.357.5486
jklein@andoverco.com



We obtained the information above from sources we believe to be reliable. However, we have not verified its accuracy and make no guarantee, warranty or representation about it. It is submitted subject to the possibility of errors, omissions, change of price, rental or other conditions, prior sale, lease or financing, or withdrawal without notice. We include projections, opinions, assumptions or estimates for example only, and they may not represent current or future performance of the property. You and your tax and legal advisors should conduct your own investigation of the property and transaction.