

MULTI-DUPLEX DEVELOPMENT SITE FOR SALE

ELDERBERRY PLACE

509 WEST B ST, SHELTON, WA



Prime 6.22 acre property is approved for the development of six duplexes, with potential for future expansion.

Located in the heart of Shelton, it offers easy access to Highway 101, providing a direct route to Olympia. The site is nearby other new developments and is in close proximity to restaurants, shopping, and other amenities.

Sale Price of \$420,000

270,943 SF land size

Parcel 420241500964

Zoning Neighborhood Residential

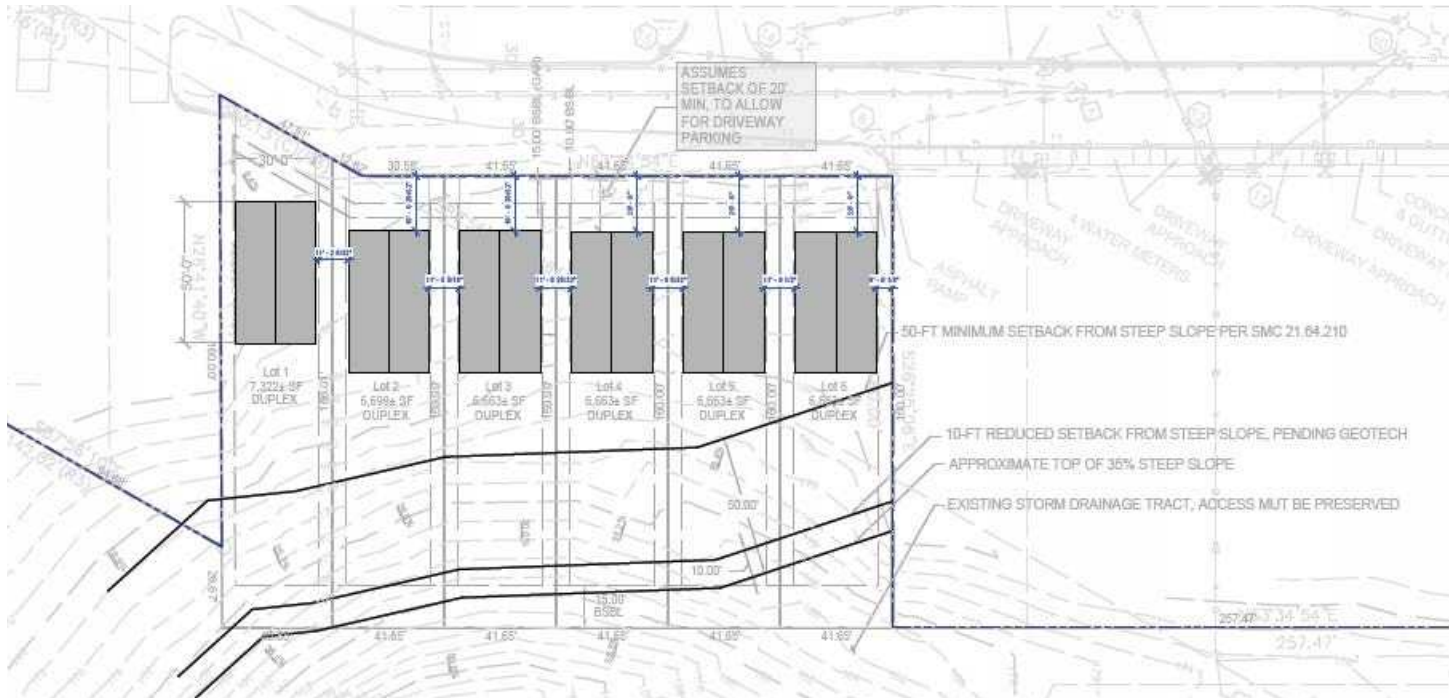
BRUCE BARKER
253.722.1459
bruce.barker@kidder.com

KIDDER.COM

This information supplied herein is from sources we deem reliable. It is provided without any representation, warranty, or guarantee, expressed or implied as to its accuracy. Prospective Buyer or Tenant should conduct an independent investigation and verification of all matters deemed to be material, including, but not limited to, statements of income and expenses. Consult your attorney, accountant, or other professional advisor.

km Kidder
Mathews

ELDERBERRY PLACE



KIDDER.COM

This information supplied herein is from sources we deem reliable. It is provided without any representation, warranty, or guarantee, expressed or implied as to its accuracy. Prospective Buyer or Tenant should conduct an independent investigation and verification of all matters deemed to be material, including, but not limited to, statements of income and expenses. Consult your attorney, accountant, or other professional advisor.



ELDERBERRY PLACE



KIDDER.COM

This information supplied herein is from sources we deem reliable. It is provided without any representation, warranty, or guarantee, expressed or implied as to its accuracy. Prospective Buyer or Tenant should conduct an independent investigation and verification of all matters deemed to be material, including, but not limited to, statements of income and expenses. Consult your attorney, accountant, or other professional advisor.

