

1247 PUYALLUP AVE

TACOMA

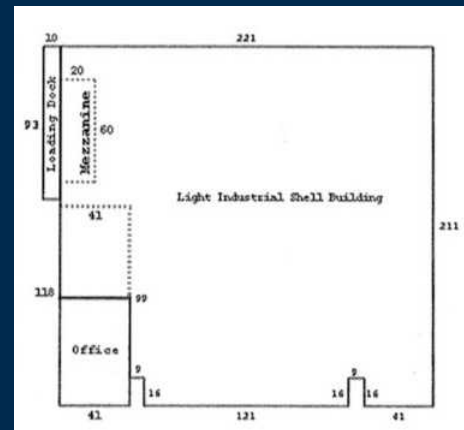
Windermere
COMMERCIAL

WINDERMERE REAL ESTATE LAKE TAPPS, INC.



PROPERTY HIGHLIGHTS

- * 2 Parcels
- * 6 Bay Doors
- * Loading Dock
- * Excellent Location
- * Near Freeways
- * Plenty of Parking
- * Zoned M-1



\$3,300,000

MLS # 2465152

SQ FT 46353

LOT AC 2.32

Single commercial building totaling 46,343 sq. ft. on 1.97 acres. Second graveled .36 acre lot included. Property features a warehouse with six 10' bay doors, a loading dock, and a fully fenced lot with 23+ parking spaces. Interior includes a retail/showroom area, warehouse storage, office, a break room, a conference room, and a 1,200 sq. ft. mezzanine. Upgrades include new support beams throughout and newer windows. Zoned M-1.



1247 PUYALLUP AVE Tacoma

\$3,300,000



Micheal Smith

WINDERMERE REAL ESTATE LAKE TAPPS, INC.

mismith@windermere.com
(253) 677-9701



Ken Freed

WINDERMERE REAL ESTATE LAKE TAPPS, INC.

kenfreed@msn.com
(206)605-3530

