

Offering Memorandum

Fire Station 51

444 ANDOVER PARK E, TUKWILA, WA

**OFFERS
DUE BY
10/17/25**

WILL SCHMIDT
Partner
+1 206 794 0421
wschmidt@nai-psp.com

AL ROBERTSON
Senior Vice President
+1 206 388 6030
arobertson@nai-psp.com

NAI Puget Sound
Properties

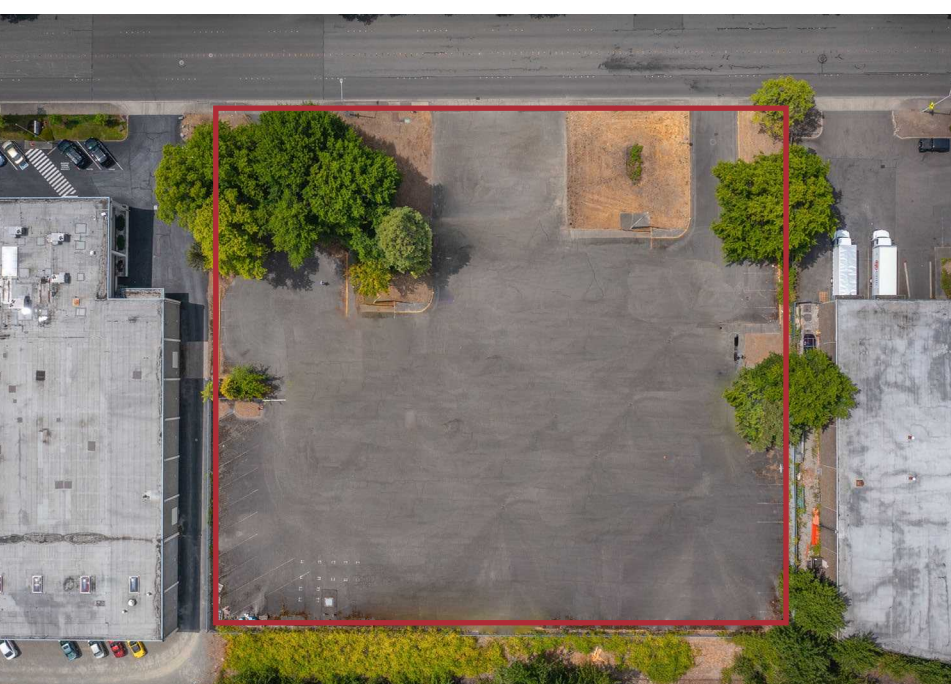
Property Details

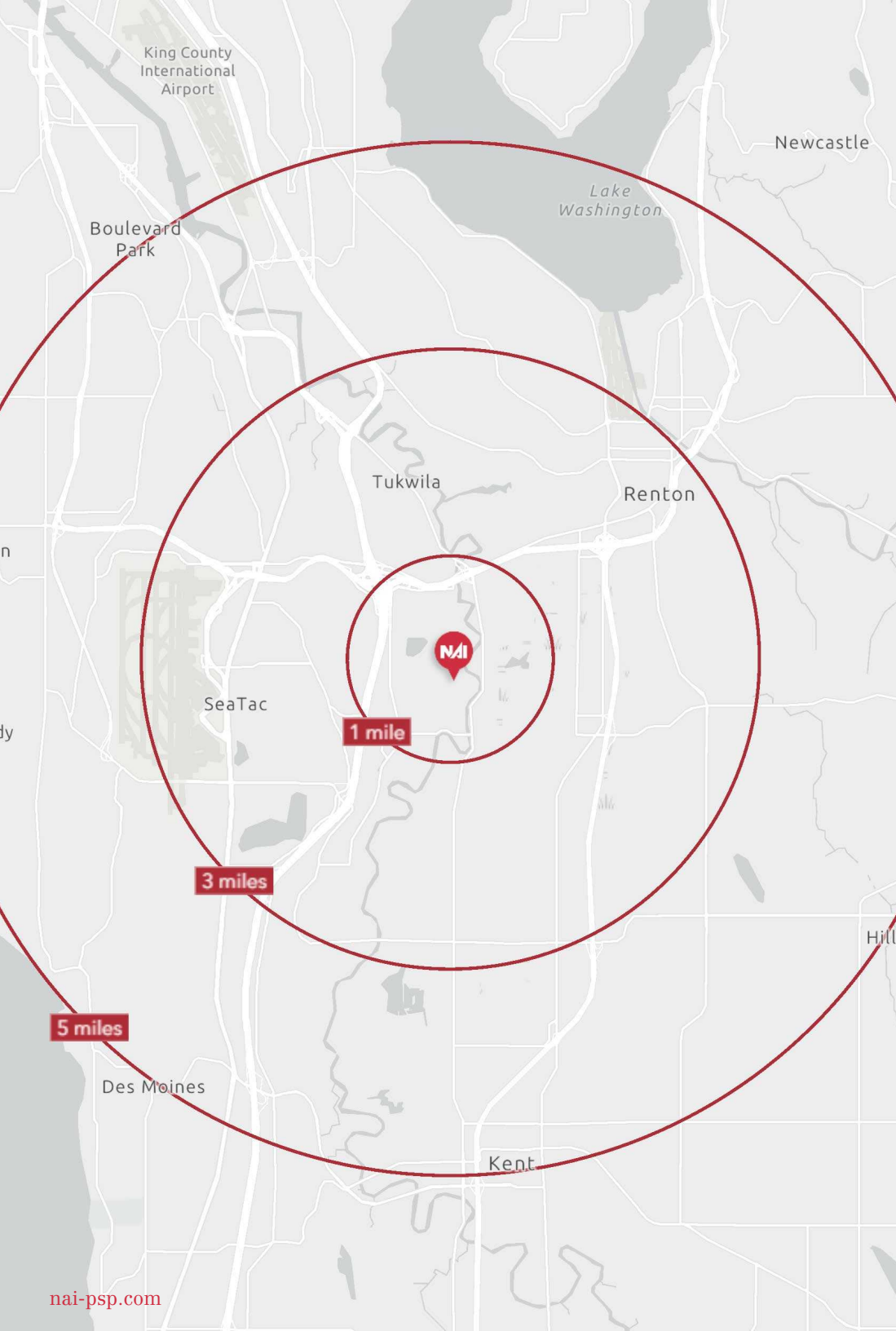
- + RARE FLEXIBLE USE DEVELOPMENT SITE
NEAR SOUTHCENTER
- + BUILDING SIZE: 15,519 SF
- + LAND SIZE: 81,000 SF
- + ZONING : TUC-WP
- + YEAR BUILT: 1975
- + CALL BROKERS FOR PRICING



Amenities Map







Demographic Overview

444 ANDOVER PARK E, TUKWILA, WA

	1 MILE	3 MILES	5 MILES
Population	2,257	89,052	304,920
Households	878	33,983	113,218
Median Age	38.4	38.0	38.5
Median HH Income	\$79,446	\$86,288	\$93,870
Avg. HH Income	\$104,479	\$114,155	\$123,794

Fire Station 51

444 ANDOVER PARK E, TUKWILA, WA

EXCLUSIVELY LISTED BY:

WILL SCHMIDT

Partner

+1 206 794 0421

wschmidt@nai-psp.com

AL ROBERTSON

Senior Vice President

+1 206 388 6030

arobertson@nai-psp.com

NAI Puget Sound
Properties

THE INFORMATION CONTAINED HEREIN HAS BEEN GIVEN TO US BY THE OWNER OF THE PROPERTY OR OTHER SOURCES WE DEEM RELIABLE. WE HAVE NO REASON TO DOUBT ITS ACCURACY, BUT WE DO NOT GUARANTEE IT. ALL INFORMATION SHOULD BE VERIFIED PRIOR TO PURCHASE OR LEASE.