

1.32 ACRES VACANT LOTS

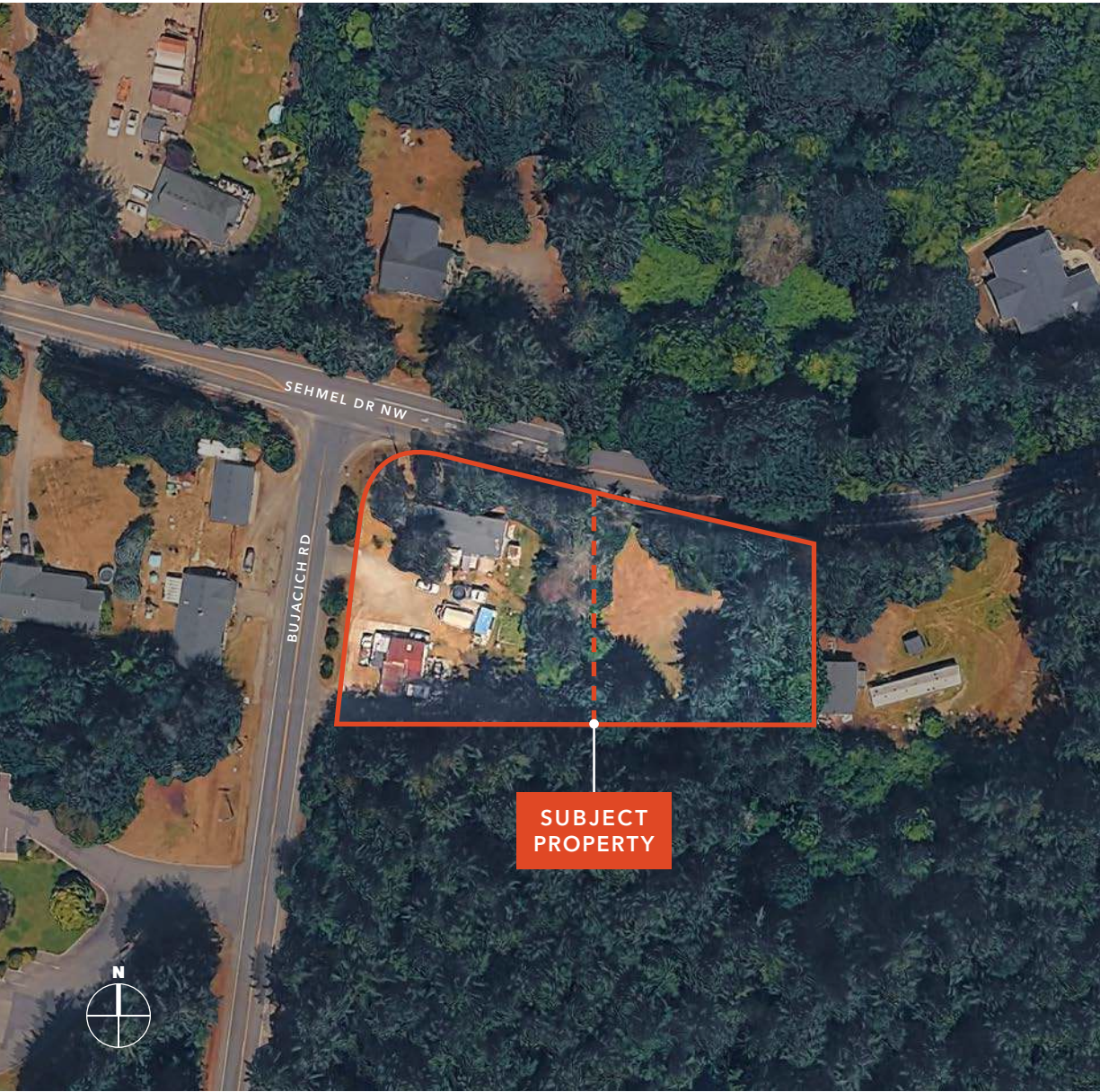
*Multiple Vacant Parcels
Totaling Approximately
1.32 Acres For Sale in
Gig Harbor, WA*

6104 & 6118 SEHMEI DR
GIG HARBOR, WA 98332

BRUCE BARKER, CCIM, MBA
253.722.1459
bruce.barker@kidder.com

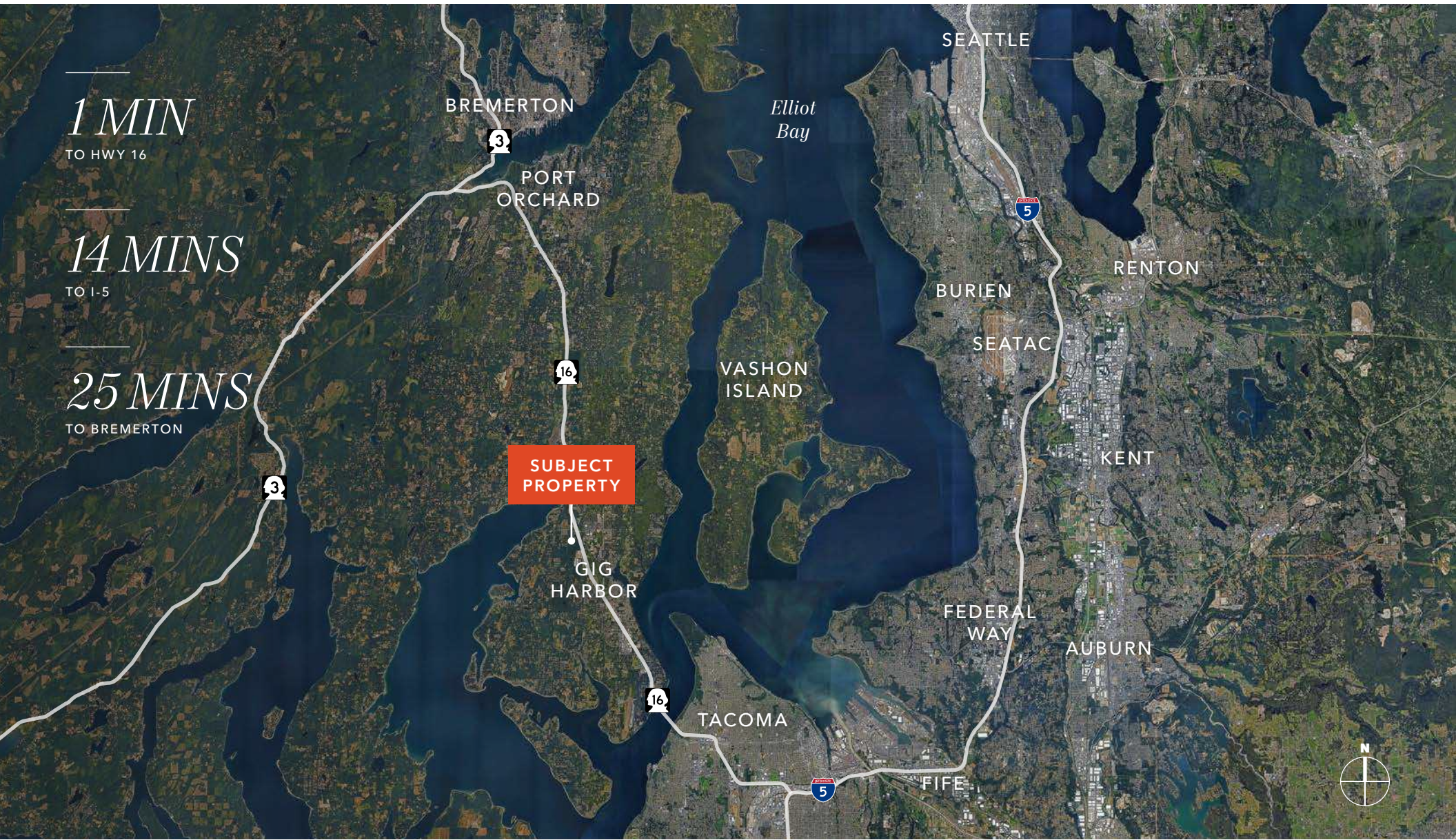
KIDDER.COM





The property has been annexed into the City of Gig Harbor and rezoned to the desirable Employment District (ED), a classification designed to foster high-value commercial and employment-generating uses.

ADDRESS	6104 & 6118 Sehmel Dr Gig Harbor, WA 98332
SALE PRICE	\$1,250,000
TAX PARCELS	0122361008 & 0122361006
LOT SIZE	1.32 AC total (0.62 AC & 0.70 AC)
ZONING	Employment District (ED)
GENERALLY ALLOWED USES	Employment District (ED) Zoning: This favorable zoning designation allows for a broad range of light industrial, retail, office, and service-oriented businesses, providing flexibility for a variety of development concepts.



DEMOGRAPHICS

POPULATION

	1 Mile	3 Miles	5 Miles
2010 CENSUS	2,604	20,398	43,933
2020 CENSUS	3,692	26,072	51,358
2025 ESTIMATED	3,875	26,741	51,578
2030 PROJECTED	3,900	27,111	52,289

MEDIAN AGE & GENDER

	1 Mile	3 Miles	5 Miles
MEDIAN AGE	42.8	46.3	45.7
% FEMALE	44.2%	49.9%	50.3%
% MALE	55.8%	50.1%	49.7%

HOUSEHOLD INCOME

	1 Mile	3 Miles	5 Miles
2025 MEDIAN	\$136,427	\$131,672	\$130,584
2030 MEDIAN PROJECTED	\$135,932	\$130,990	\$129,971
2025 AVERAGE	\$218,931	\$187,928	\$180,130
2030 AVERAGE PROJECTED	\$215,491	\$185,318	\$177,784

Data Source: ©2025, Sites USA



Henderson Bay

ST. ANTHONY HOSPITAL



SUBJECT PROPERTY



6,566+ VEHICLES
Average Daily Traffic

MCCORMICK FOREST PARK

17,152+ VEHICLES
Average Daily Traffic

SEHMEL DR NW



BUJACICH RD

GIG HARBOR



For more information, contact

BRUCE BARKER, CCIM, MBA

253.722.1459

bruce.barker@kidder.com

KIDDER.COM

This information supplied herein is from sources we deem reliable. It is provided without any representation, warranty, or guarantee, expressed or implied as to its accuracy. Prospective Buyer or Tenant should conduct an independent investigation and verification of all matters deemed to be material, including, but not limited to, statements of income and expenses. Consult your attorney, accountant, or other professional advisor. All Kidder Mathews designs are the sole property of Kidder Mathews. Branded materials and layouts are not authorized for use by any other firm or person.

