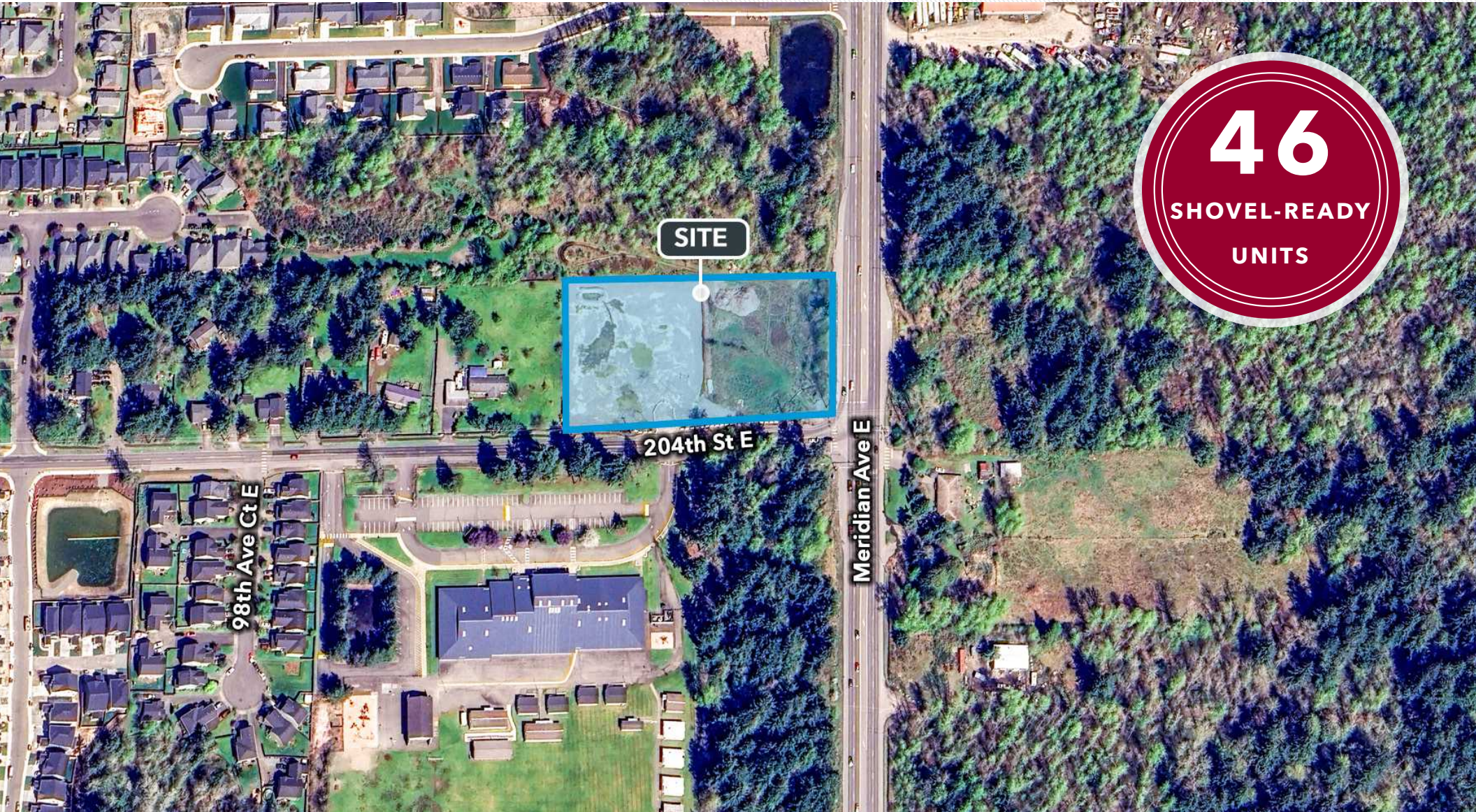


MULTIFAMILY SITE FOR SALE

# AMBER HOUSE DEVELOPMENT SITE

10025 204TH STREET EAST, GRAHAM, WA 98338







**LEE &  
ASSOCIATES**  
COMMERCIAL REAL ESTATE SERVICES

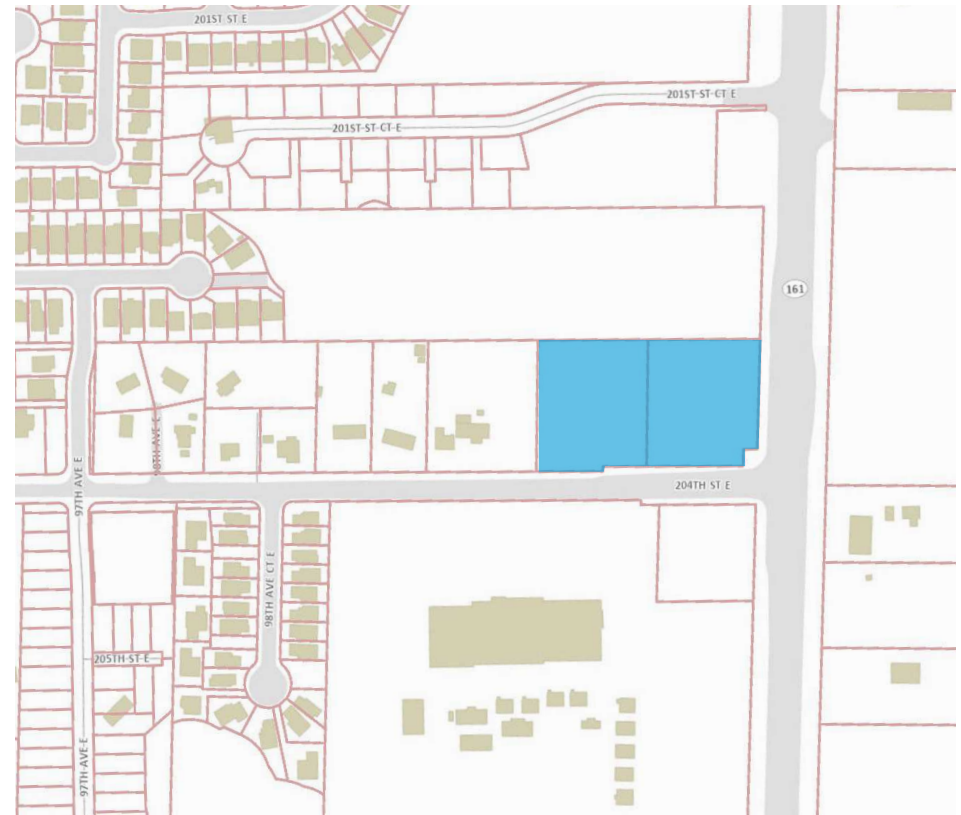


## PERMIT-READY MULTIFAMILY DEVELOPMENT SITE

## PROPERTY HIGHLIGHTS

<b>LAND AREA:</b>	2.9 ACRES +/- DEVELOPABLE AREA
<b>ZONING:</b>	<p><b>Moderate-High Density Residential (MHR)</b> includes allowed uses: single-, two-, and multi-family housing and compatible civic uses.</p> <p><a href="#">Zoning Map</a> <a href="#">Zoning Code</a></p>
<b>SALE PRICE:</b>	CALL BROKER

-  Ideal for investors seeking multi-family development potential
-  Located across the street from Graham Elementary School, and within proximity to South Hill amenities and retail
-  Situated alongside of SR-161 with direct access to South Hill and Puyallup regions and convenient travel toward I-5
-  Building permits, civil permits, and sewer permits are approved and awaiting pickup
-  Fully entitled, designed, and engineered project
-  Partially cleared and graded





# AMBER HOUSE DEVELOPMENT SITE |

10025 204TH STREET EAST, GRAHAM, WA



**Chester March**  
cmarch@lee-associates.com  
C 253.951.3407

**Chris Peterson, SIOR, CCIM**  
cpeterson@lee-associates.com  
C 425.417.7983