

# DOWNTOWN OFFICE BUILDING



204 W. Holly, Bellingham, WA 98225  
KC Coonc, Designated Broker  
(360) 305-9977 | [KC@PCRnw.com](mailto:KC@PCRnw.com)





# EXISTING BUILDING



**Sale Price: \$1,297,241**

CBA #: 44162037

NWMLS #: 2468859

Situated in Bellingham's Commercial Core, this turn-key space is perfect for office or retail use. The building was remodeled recently and has a large kitchenette and ADA bathrooms. The main floor is mostly open with some private office space. The mezzanine level in the front has a large conference room that looks out onto Holly St. The mezzanine level at the back has several small offices and some open space. Great window exposure, lots of light, bring your ideas. Located across from Black Sheep and Camber. Excellent owner user opportunity or the investor looking for a long-term hold property. \$7,622 pm net lease in place until 11-2-26 which can be bought out. The building does have a connection option at the back of the building to 1313 Commercial Street, a 19,156 sq ft office building, which is also for sale.



# FINANCIALS

PRICE:	\$1,297,241
BUILDING SQUARE FEET:	4,500 SF
PRICE PER SQUARE FOOT:	\$288/SF
LEASE TYPE:	Net Lease
ANNUAL SCHEDULED RENT:	\$91,461
CALCULATED CAP RATE:	7.05%
TENANT MIX:	Single Tenant
TENANT USE:	General Office

## BELLINGHAM OFFICE MARKET

TOTAL OFFICE MARKET:	4,659,351 SF
MARKET VACANCY (Q3 2025):	241,980 SF
MARKET OCCUPANCY RATE (Q3 2025):	94.81%
AVERAGE MARKET ASKING RATE:	\$19.82/SF
TOTAL DOWNTOWN SUBMARKET:	1,242,504 SF
SUBMARKET VACANCY:	95,334 SF
SUBMARKET OCCUPANCY RATE:	92.33%



*Information contained herein has been obtained from sources that we deem reliable. We have no reason to doubt its accuracy, but we do not guarantee it.*



# SURROUNDING AREA

## ● FOOD & DRINK

La Fiamma  
Fiamma Burger  
Horseshoe Café  
Juxt  
Camber Coffee  
Storia Cucina  
Bayou on Bay  
Bagelry  
AB Crepes

Neko Cat Café  
Tadeo's Mexican  
Aslan Brewing Company  
Goat Mountain Pizza Co.  
Mt. Baker Café  
Little Cheerful Café  
Wood's Coffee  
Sweet As Waffles  
Café Rumba

## ● SHOPPING & ENTERTAINMENT

Backcountry Essentials  
Bellingham Bay Runners  
Fringe  
Beck's Shoes  
Mt. Baker Theater  
Pickford Film Center  
Bay Street Village  
Whatcom Museum  
SPARK Museum

Wild Buffalo  
The Ranch Room  
The Blue Room  
BAAY Theater  
Ruckus Room  
WTA Center  
Bellingham's Farmers Market  
Rumors Cabaret  
Waypoint Park

## ● CURRENT & FUTURE HOUSING PROJECTS



York Neighborhood

Sehome Neighborhood

*Information contained herein has been obtained from sources that we deem reliable. We have no reason to doubt its accuracy, but we do not guarantee it.*



# URBAN VILLAGE DEVELOPMENT

## Bellingham Opportunity Zones:

Portions of Bellingham's downtown and waterfront have all been designated as federal Opportunity Zones. Investments in these areas qualify for substantial tax incentives under this federal program.

## Multi-family Tax Exemption Program:

Get an 8-12 year property tax exemption on the residential value of new multi-family construction.

## B & O Tax Reduction:

New businesses and branches that locate in Downtown, Old Town, Waterfront, Samish Way or Fountain are eligible for a graduated tax credit of 90% for the first year, 75% for the second year, and 50% for the third year of operation. Contact the Business License Services / Tax line at 360-778-8012 for more information.

## Transportation Impact Fee (TIF) Reduction:

Take advantage of automatically-reduced Transportation Impact Fees (TIF) in these areas. The less transportation impact your project has, the better. Check out this program's FAQ's for details.

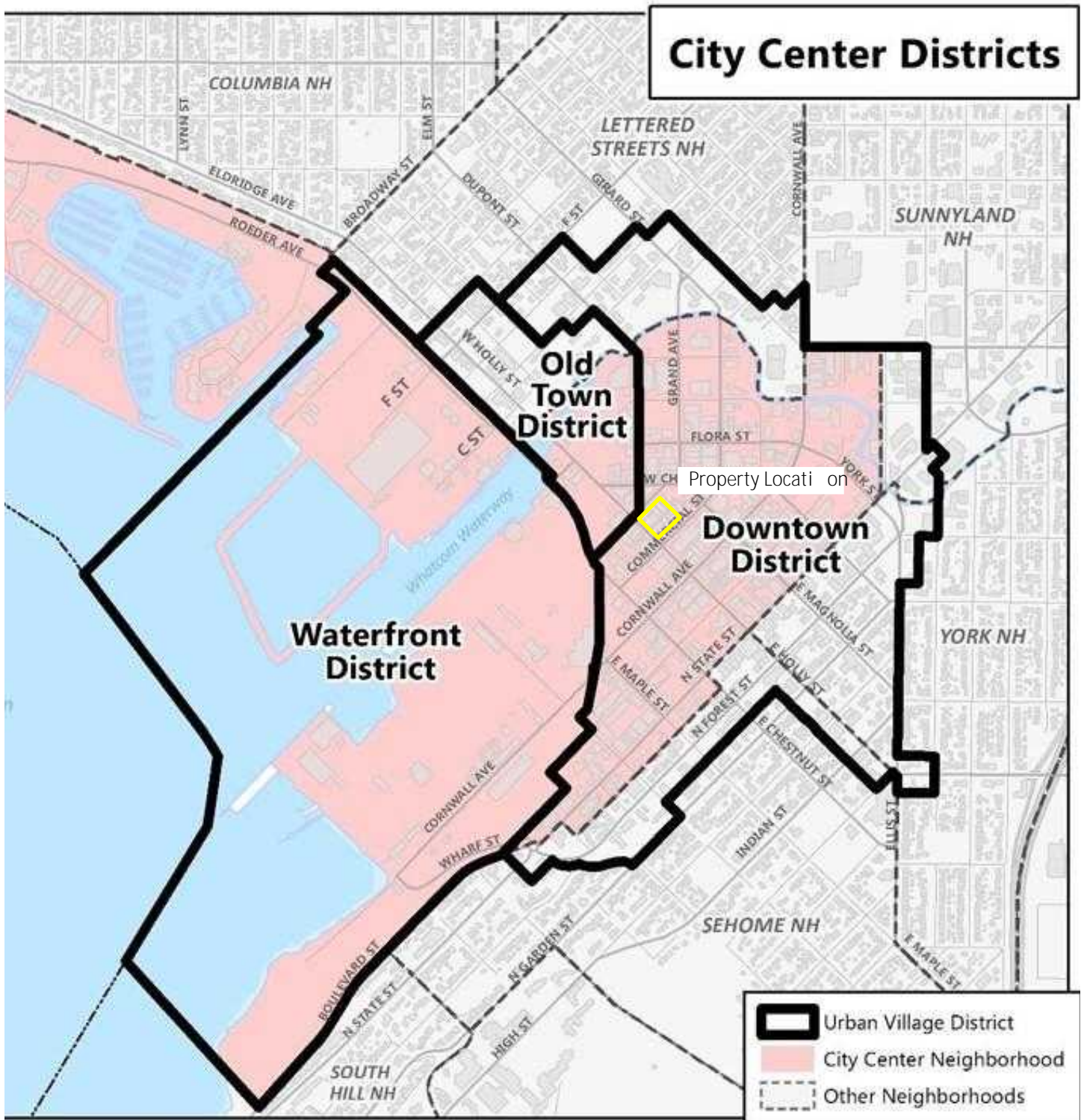


*Information contained herein has been obtained from sources that we deem reliable. We have no reason to doubt its accuracy, but we do not guarantee it.*



# ZONING MAP

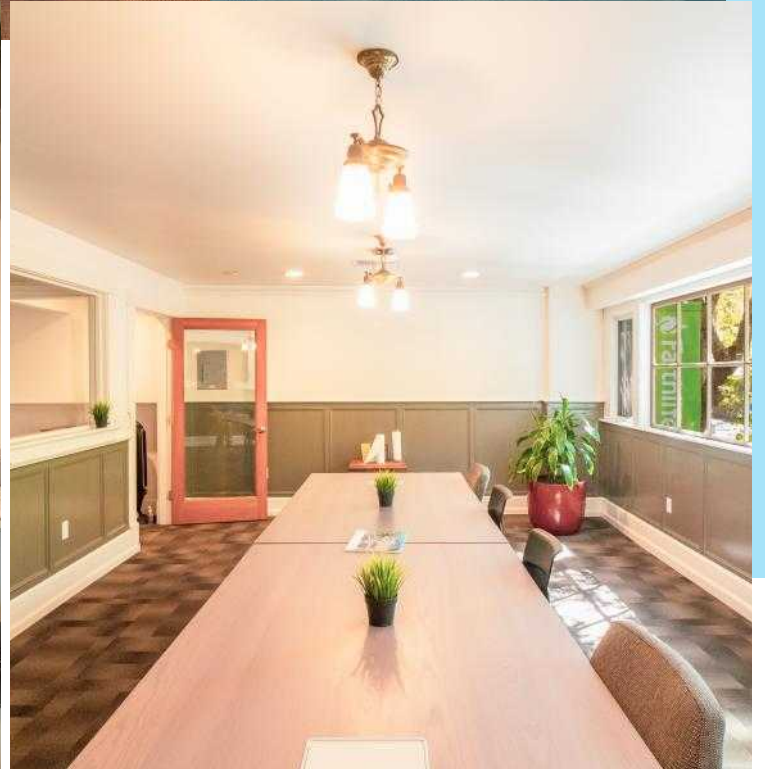
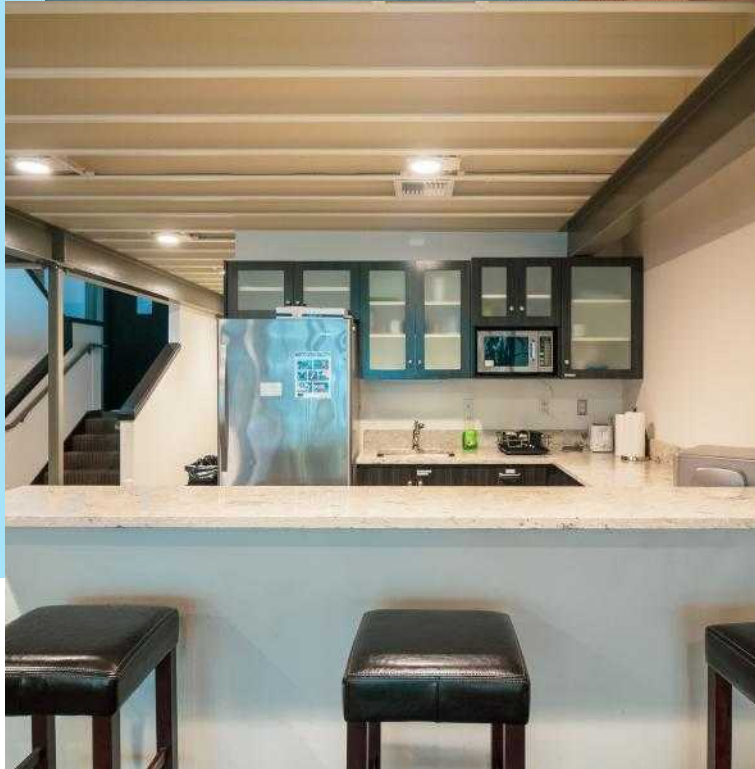
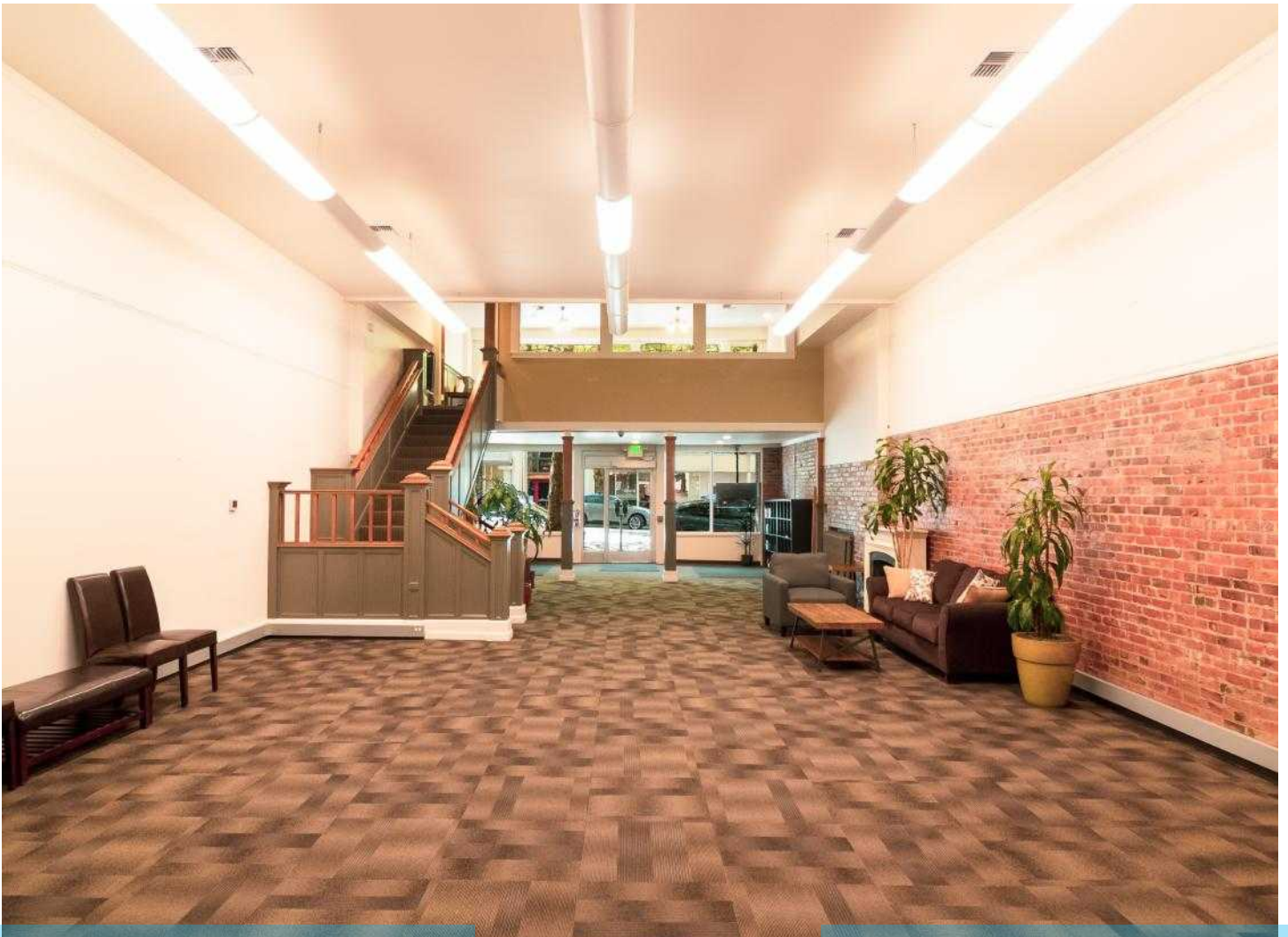
Portions of the Downtown District and Old Town District, along with the Waterfront District and Squalicum Harbor, comprise the City Center Neighborhood. The City Center Neighborhood Plan unites the three districts under a common planning umbrella, while the goals, policies, and regulations for each are contained within the plans and development codes for each individual area. The Downtown District also includes portions of the four neighborhoods abutting the City Center.



Information contained herein has been obtained from sources that we deem reliable. We have no reason to doubt its accuracy, but we do not guarantee it.



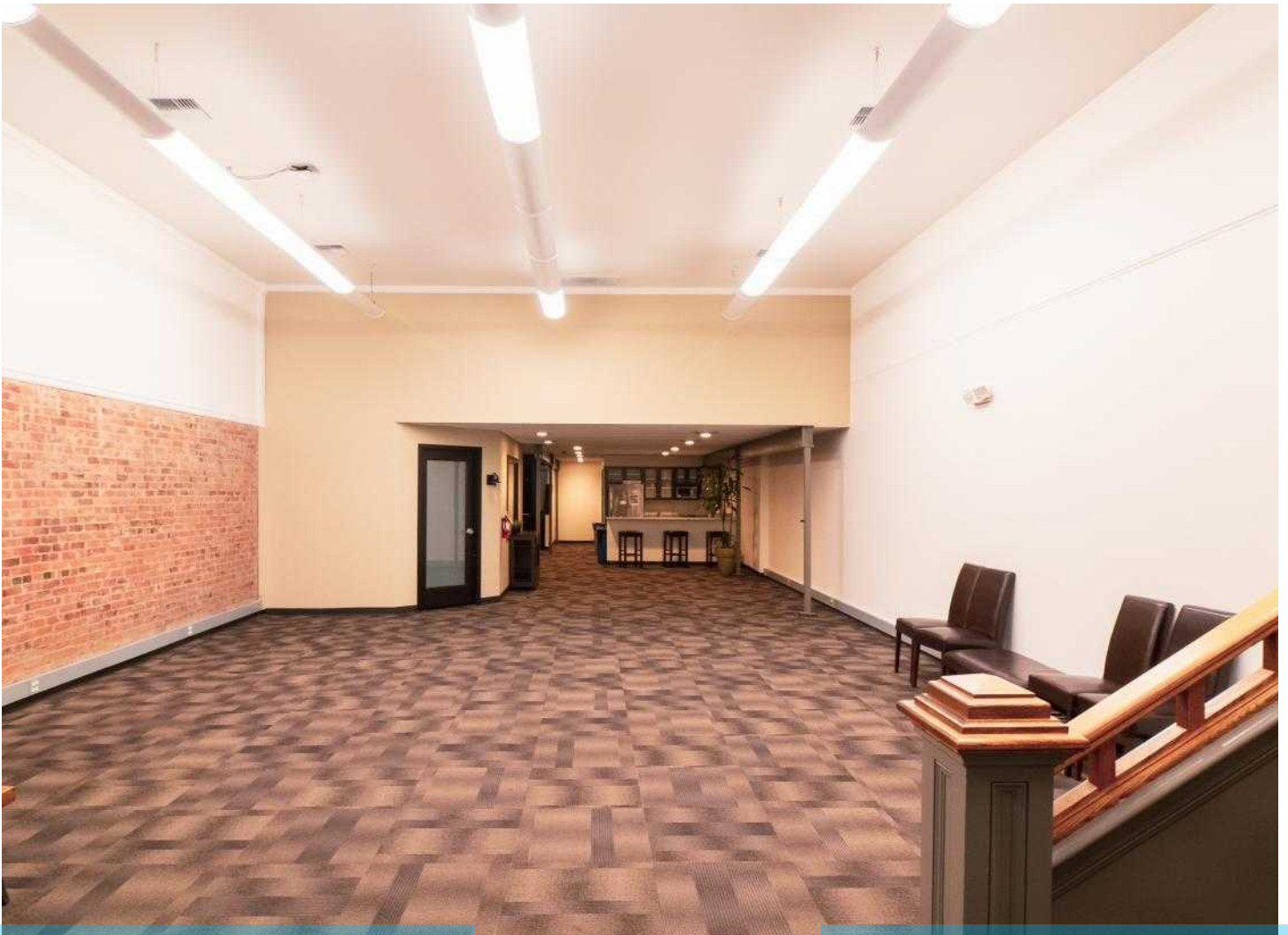
# PHOTOS



*Information contained herein has been obtained from sources that we deem reliable. We have no reason to doubt its accuracy, but we do not guarantee it.*



# PHOTOS



*Information contained herein has been obtained from sources that we deem reliable. We have no reason to doubt its accuracy, but we do not guarantee it.*



# MARKET AREA

The Pacific Northwest scarcely gets more peaceful than unspoiled Bellingham, a bustling city nestled in the Bellingham Bay. Nature abounds in all directions surrounding this coastal paradise. Bellingham can be conveniently accessed by land, air, rail, and sea. With easy transportation to both Canada and the international hub of Seattle, Bellingham offers a great middle point. While the Canadian market offers a diverse economy for the local businesses, continually businesses are migrating north to the area in order to find a new and better home. The waters of the Pacific offer opportunities for whale watching, cruising to Friday Harbor or visiting the Canadian city of Victoria. To the east, Mt. Baker beckons skiers and snowboarders to its slopes. The city itself is alive with vibrant theater, historical museums, gourmet restaurants and fine arts.



## NATURAL BEAUTY

The dominating Mt. Baker towers over the city, with its staggering beauty. The deep expansive blue of the ocean carries our sight to the San Juan Islands. All the while you are hugged by the soft green of thunderous trees that decorate land for as far as the eye can see.



## STRATEGIC LOCATION

The prosperous city Vancouver, Canada only sits 55 miles north. And the technological hub of Seattle resides 88 miles to the south. Bellingham provides an essential middle point for those looking to operate within both expanding districts.



## HIGHER EDUCATION

Within Whatcom there are five different institutions of higher education that cover a vast array of different focuses. Western Washington University, Whatcom Community College, Bellingham Technical College, NW Indian College, and Trinity University all provide qualified and skilled workers.

## DEMOGRAPHICS



### Population

Whatcom County: 230,077

Bellingham: 97,310



### Median HH Income

Whatcom County: \$80,989

Bellingham: \$108,428



### Median Age

Whatcom County: 39

Bellingham: 37.5