



10010 N. Division St.

Spokane, Washington 99218

Property Description

This is a rare opportunity to own a state-of-the-art commercial building in a highly visible and accessible location along N Division Street. Formerly home to Dynamic Dental, this beautifully designed and meticulously maintained property features modern technology throughout, luxurious finishes, and a layout ideal for a variety of professional uses—including dentistry, therapy, chiropractic care, or general office space.

The building boasts a high-end reception area, spacious and elegant office suites, and top-tier treatment or consultation rooms. Recent upgrades include a fully paved and extended parking lot, providing ample parking for staff and clients alike.

In addition, the current owner is offering a 2-year lease-back of the space, presenting a unique opportunity for investors to generate immediate income while securing a premium long-term asset.

Whether you're looking to elevate your own practice or invest in a high-quality, income-generating commercial property, this building offers unmatched flexibility, comfort, and curb appeal in one of North Spokane's most active corridors.

Sale Price: \$2,000,000

Property Highlights

- Building Size: 2,001 SF ±
- Lot Size: 0.50 acre (21,606 SF ±)
- Modern construction with cutting-edge technology and infrastructure
- Recently extended and fully paved parking lot for ample customer and staff parking
- Luxurious reception and secretary area with high-end finishes
- Designed with functionality in mind—ideal for dental, medical, therapy, chiropractic, or general office use
- Bright and welcoming interior spaces built to impress clients and patients alike
- High-visibility location with strong traffic counts and convenient access to North Spokane communities

For more information

John Powers

O: 509 622 3563

jpowers@naiblack.com

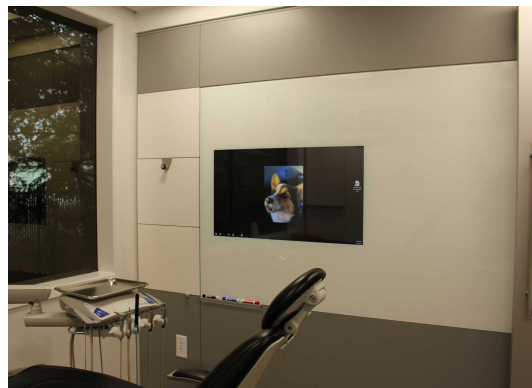
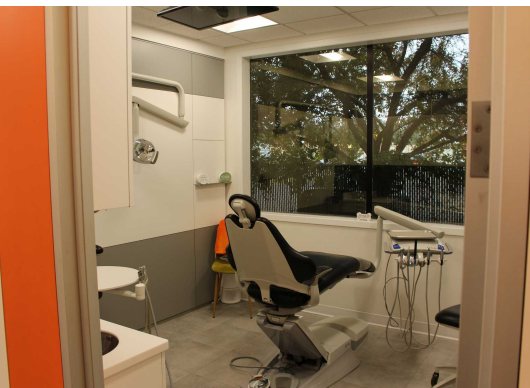
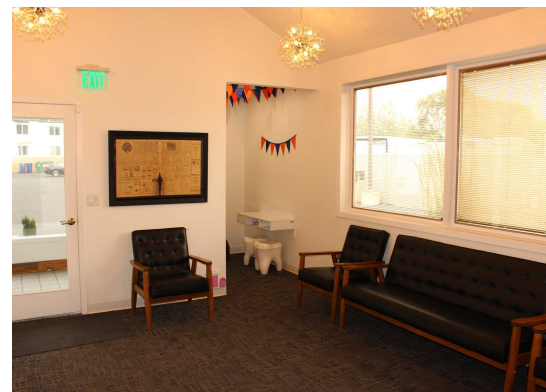
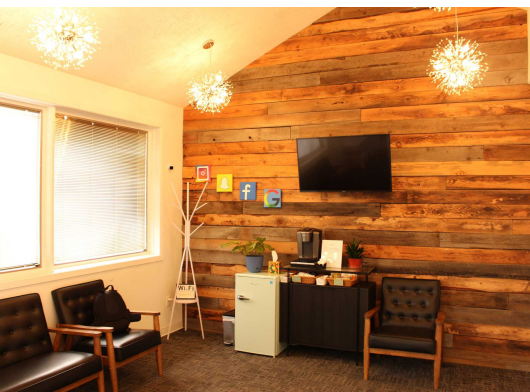
Eric Weaver

O: 360 631 1526

eric.weaver@naiblack.com

For Sale
Business and Real Estate

NAI Black



No warranty or representation, expression or implied, is made as to the accuracy of the information contained herein, and the same is submitted subject to errors, omissions, change or price, rental or other conditions, prior to sale, lease, financing, or withdrawal without notice, and of special listing conditions imposed by our principals no warranties or representations are made as to the condition of the property or any hazards contained therein or any to be implied.

801 W. Riverside Avenue, Suite 300
Spokane, WA 99201
509 623 1000 tel
naiblack.com

For Sale
Business and Real Estate

NAI Black



No warranty or representation, expression or implied, is made as to the accuracy of the information contained herein, and the same is submitted subject to errors, omissions, change or price, rental or other conditions, prior to sale, lease, financing, or withdrawal without notice, and of special listing conditions imposed by our principals no warranties or representations are made as to the condition of the property or any hazards contained therein or any to be implied.

801 W. Riverside Avenue, Suite 300
Spokane, WA 99201
509 623 1000 tel
naiblack.com



Population	3 Miles	5 Miles	7 Miles
Total Population	66,259	171,361	226,422
Average Age	40	39	40
Average Age (Male)	39	38	39
Average Age (Female)	41	41	41

Households & Income	3 Miles	5 Miles	7 Miles
Total Households	26,022	66,446	89,331
# of Persons per HH	2.5	2.6	2.5
Average HH Income	\$93,431	\$90,089	\$88,624
Average House Value	\$437,003	\$416,232	\$422,062

Demographics data derived from AlphaMap

