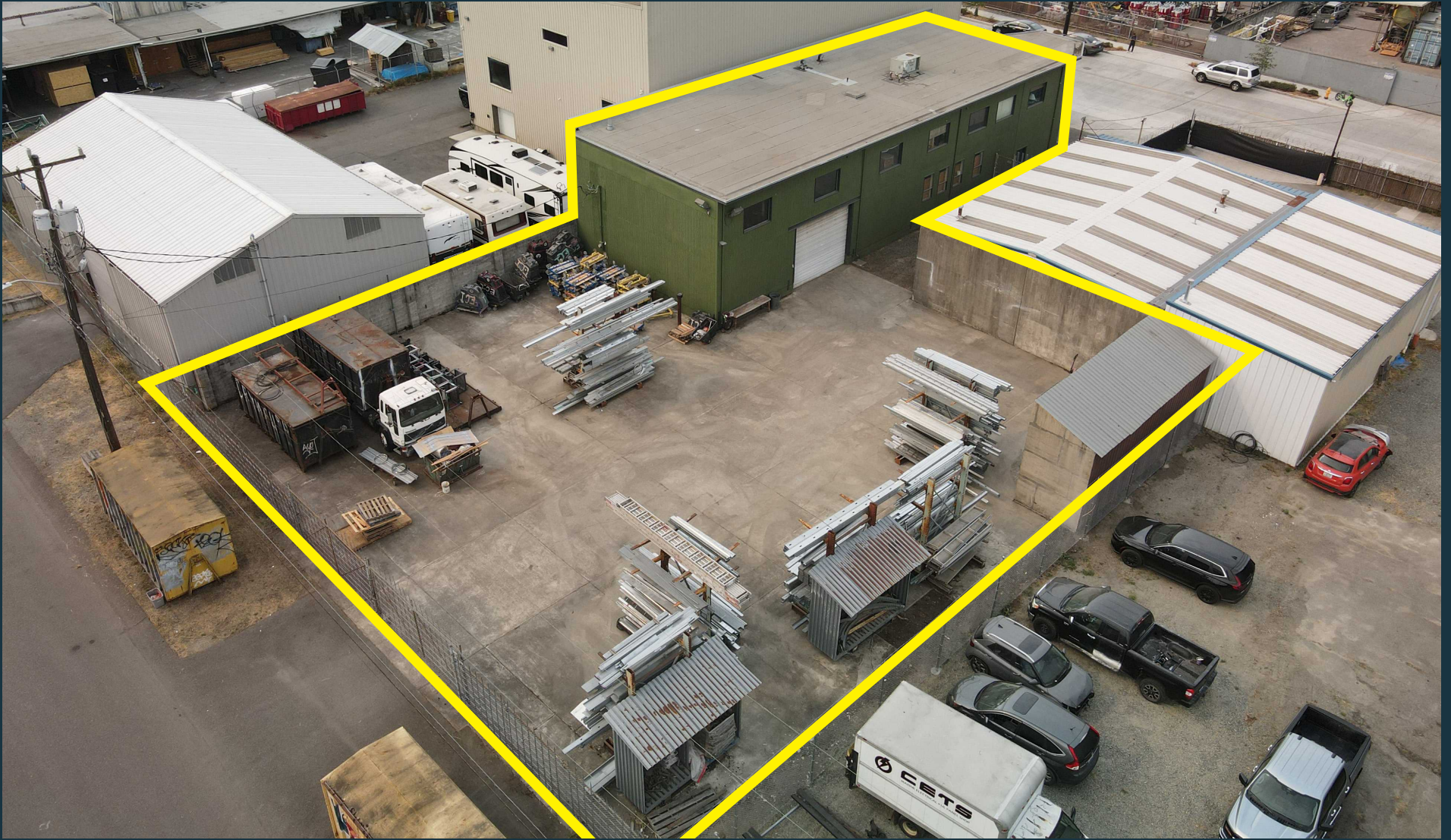


# FOR SALE

6,117 SF Building With 8,000 SF Of Paved Yard

253 S Holden St, Seattle



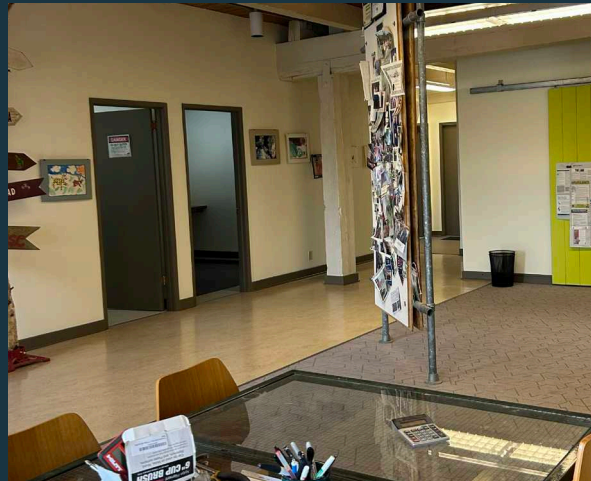
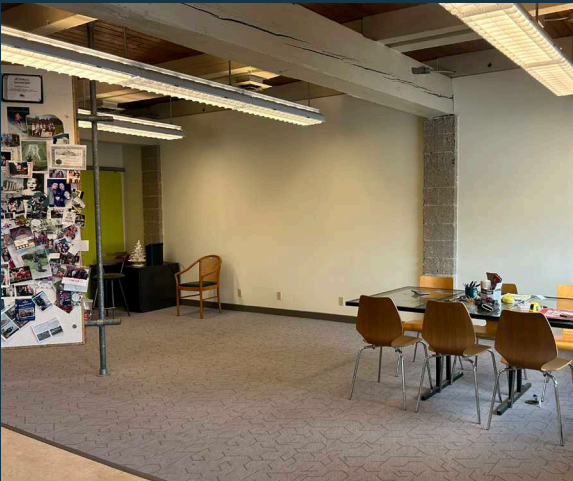
**NEWMARK**

**Thad Mallory, SIOR** | Vice Chairman | 425-362-1410 | [thad.mallory@nmrk.com](mailto:thad.mallory@nmrk.com)

**Josh Satterlee** | Associate | 425-362-1396 | [josh.satterlee@nmrk.com](mailto:josh.satterlee@nmrk.com)



# BUILDING PHOTOS



## PROPERTY HIGHLIGHTS

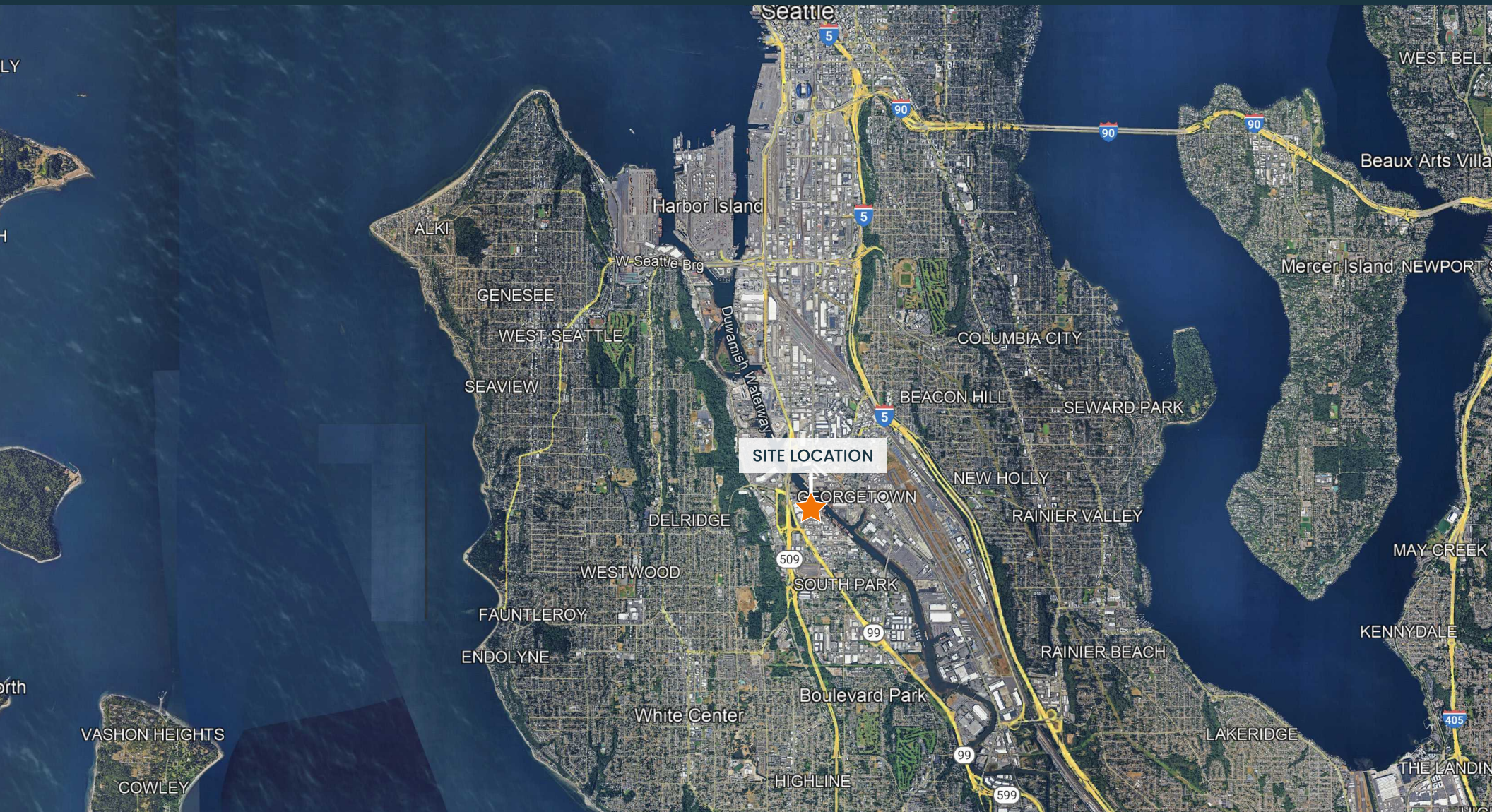
Address	253 S Holden St Seattle, WA
Building	Total Building: 6,117 SF Warehouse: 3,650 SF Office: 1,837 SF Mezzanine: 630 SF
Yard	8,000 SF Fenced & Paved
Clear Height	10'-22'
Loading	1 Oversized GL Door 14' x 12'
Zoning	MML U/85
Sales Price	\$1,950,000

# FLOOR PLAN





# AERIAL MAP



The distributor of this communication is performing acts for which a real estate license is required. The information contained herein has been obtained from sources deemed reliable but has not been verified and no guarantee, warranty or representation, either express or implied, is made with respect to such information. Terms of sale or lease and availability are subject to change or withdrawal without notice.

253 S Holden St | Seattle, WA