



FOR SALE | 6.67 AC IOS
(±3.75 AC USABLE)

10111 STATE ROUTE 162 E, PUYALLUP WA 98374

\$3,200,000

SALE PRICE

*Exclusively
listed by*

MATT MCLENNAN, SIOR, CCIM
Executive Vice President
253.722.1458
matt.mclennan@kidder.com

Property Overview

LAND AREA	Gross: 6.67 AC (290,720 SF) Usable: ±3.75 AC (163,369 SF)
BUILDINGS	Office: 1,319 SF Shop: 1,440 SF
CONSTRUCTION TYPE	Wood frame (office) and Pole Metal Construction (Shop)
TRUCK ACCESS	Grade-level loading only
CLEARANCE HEIGHT	14'
JURISDICTION	Pierce County: Alderton McMillin Community Plan
ZONING	Rural 10 (IOS uses permitted under active Conditional Use Permit)
APN	0519066001 0519066002 0519066003

→ VIEW PHOTOS

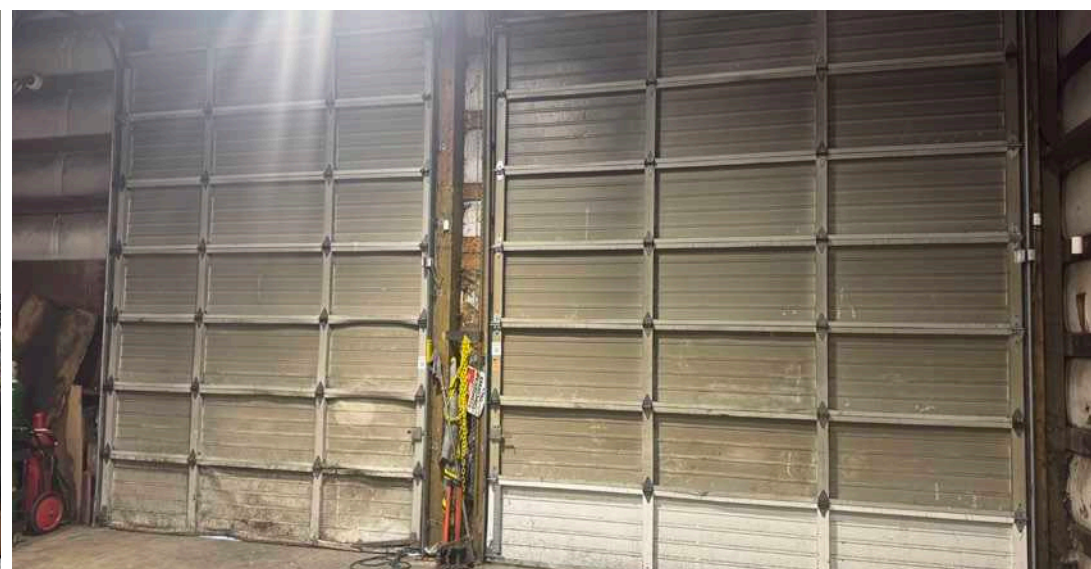
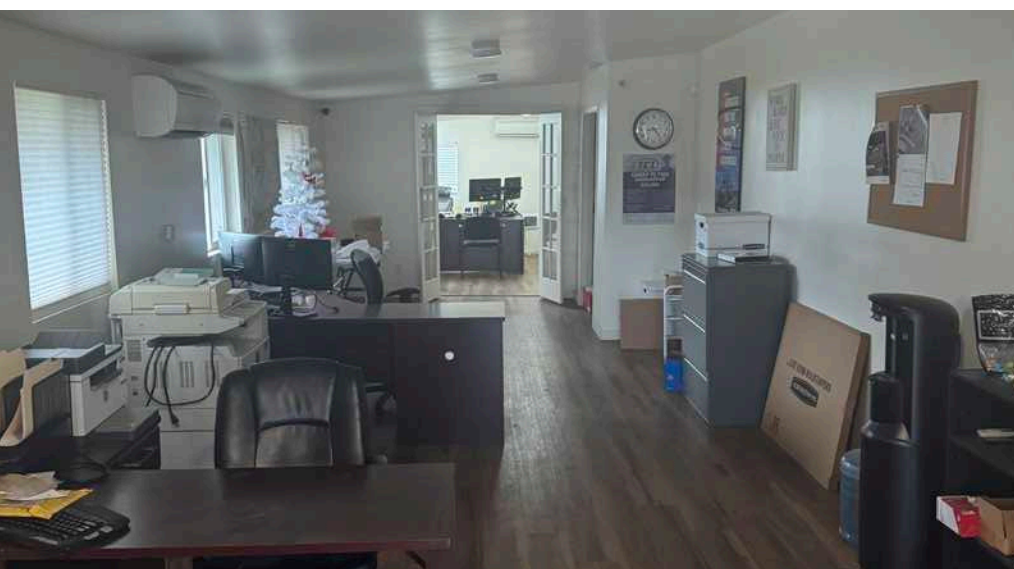


KIDDER.COM

This information supplied herein is from sources we deem reliable. It is provided without any representation, warranty, or guarantee, expressed or implied as to its accuracy. Prospective Buyer or Tenant should conduct an independent investigation and verification of all matters deemed to be material, including, but not limited to, statements of income and expenses. Consult your attorney, accountant, or other professional advisor. All Kidder Mathews designs are the sole property of Kidder Mathews. Branded materials and layouts are not authorized for use by any other firm or person.



FOR SALE | 10111 STATE ROUTE 162 E



KIDDER.COM

This information supplied herein is from sources we deem reliable. It is provided without any representation, warranty, or guarantee, expressed or implied as to its accuracy. Prospective Buyer or Tenant should conduct an independent investigation and verification of all matters deemed to be material, including, but not limited to, statements of income and expenses. Consult your attorney, accountant, or other professional advisor. All Kidder Mathews designs are the sole property of Kidder Mathews. Branded materials and layouts are not authorized for use by any other firm or person.



FOR SALE | 10111 STATE ROUTE 162 E

5 MIN

DRIVE TO SR 410

8 MIN

DRIVE TO HWY 512

8 MIN

DRIVE TO HWY 167

20 MIN

DRIVE TO I-5

28 MIN

DRIVE TO PORT OF TACOMA

35 MIN

DRIVE TO SEATAC AIRPORT

50 MIN

DRIVE TO PORT OF SEATTLE



AUBURN



FIFE

TACOMA



PUYALLUP

**SUBJECT
PROPERTY**

BONNEY
LAKE



KIDDER.COM

This information supplied herein is from sources we deem reliable. It is provided without any representation, warranty, or guarantee, expressed or implied as to its accuracy. Prospective Buyer or Tenant should conduct an independent investigation and verification of all matters deemed to be material, including, but not limited to, statements of income and expenses. Consult your attorney, accountant, or other professional advisor. All Kidder Mathews designs are the sole property of Kidder Mathews. Branded materials and layouts are not authorized for use by any other firm or person.

km Kidder
Mathews