

FOR SALE OR LEASE

KIDDER.COM

KIRKLAND CENTRAL BUILDING

*Ideal Partial Owner-User
or Investment Property*

YOUR SIGN HERE



625 4TH AVE, KIRKLAND, WA 98033

km Kidder
Mathews

OFFERING SUMMARY

The Kirkland Central Building is a 24,206 SF Office/Medical Property located at 625 4th Ave, Kirkland, Washington.

The three-story building, located within Downtown Kirkland and adjacent to Kirkland Urban, has six long-term tenants in place and boasts abundant covered and surface level parking.

PROPERTY DETAILS

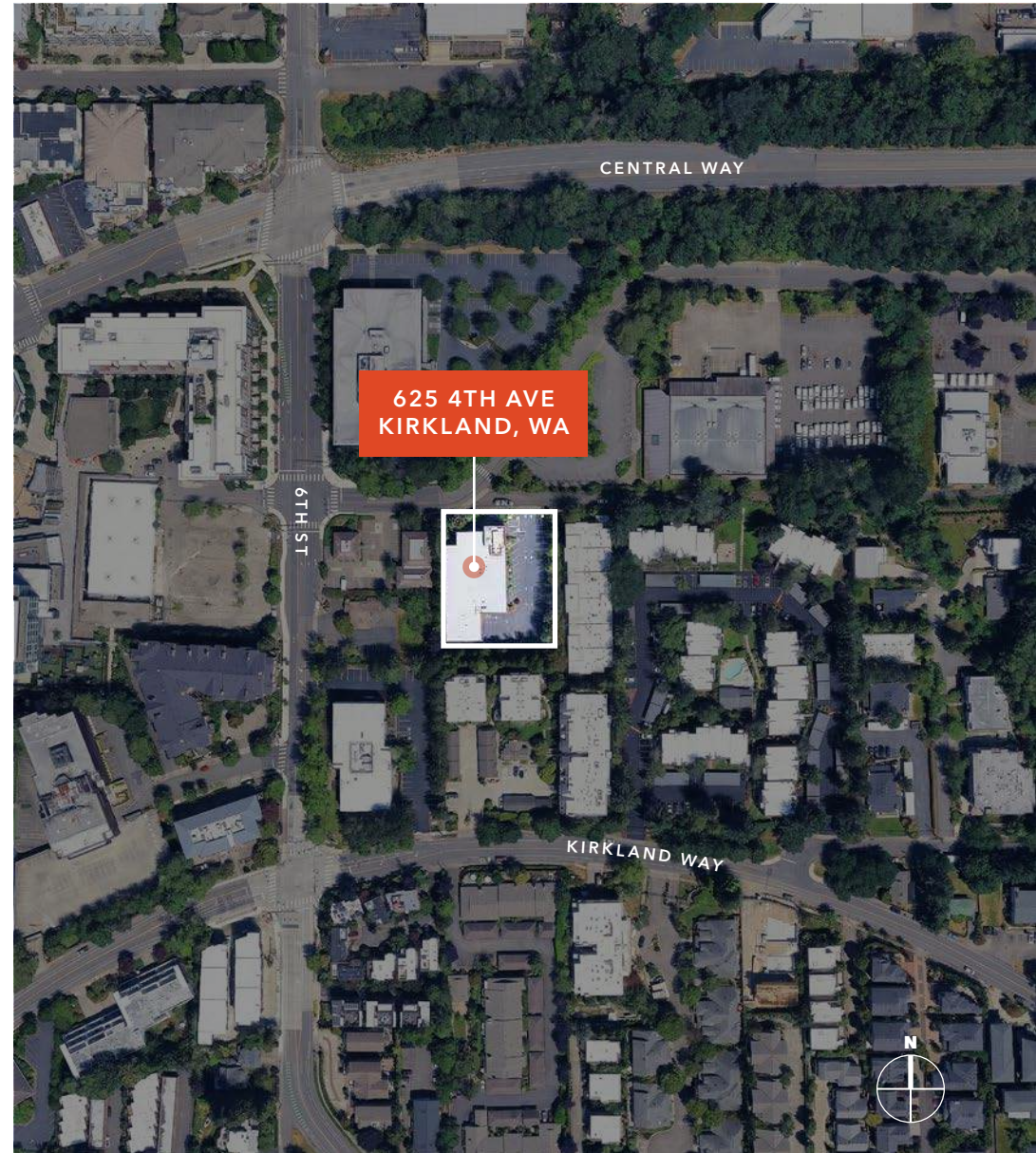
BUILDING TYPE	Office/Medical
RBA	24,206 SF
LAND AREA	37,052 SF
OCCUPANCY	56.7%
YEAR BUILT	2001
PARKING RATIO	4.0/1,000 SF
ZONING	PLA 5B
APN	123890-0085
# STORIES	3 (including ground floor lobby/garage)
ADDITIONAL DETAILS	2,515 SF surgical center on 3rd floor

\$12,600,000

ASKING PRICE

24,206 SF

RBA



KIRKLAND CENTRAL BUILDING



*Multiple office and medical/
surgical spaces available for lease
adjacent to Kirkland Urban*

Walking distance to numerous restaurants,
grocery, pharmacy, and shopping

Close proximity to Kirkland Urban and
downtown Kirkland

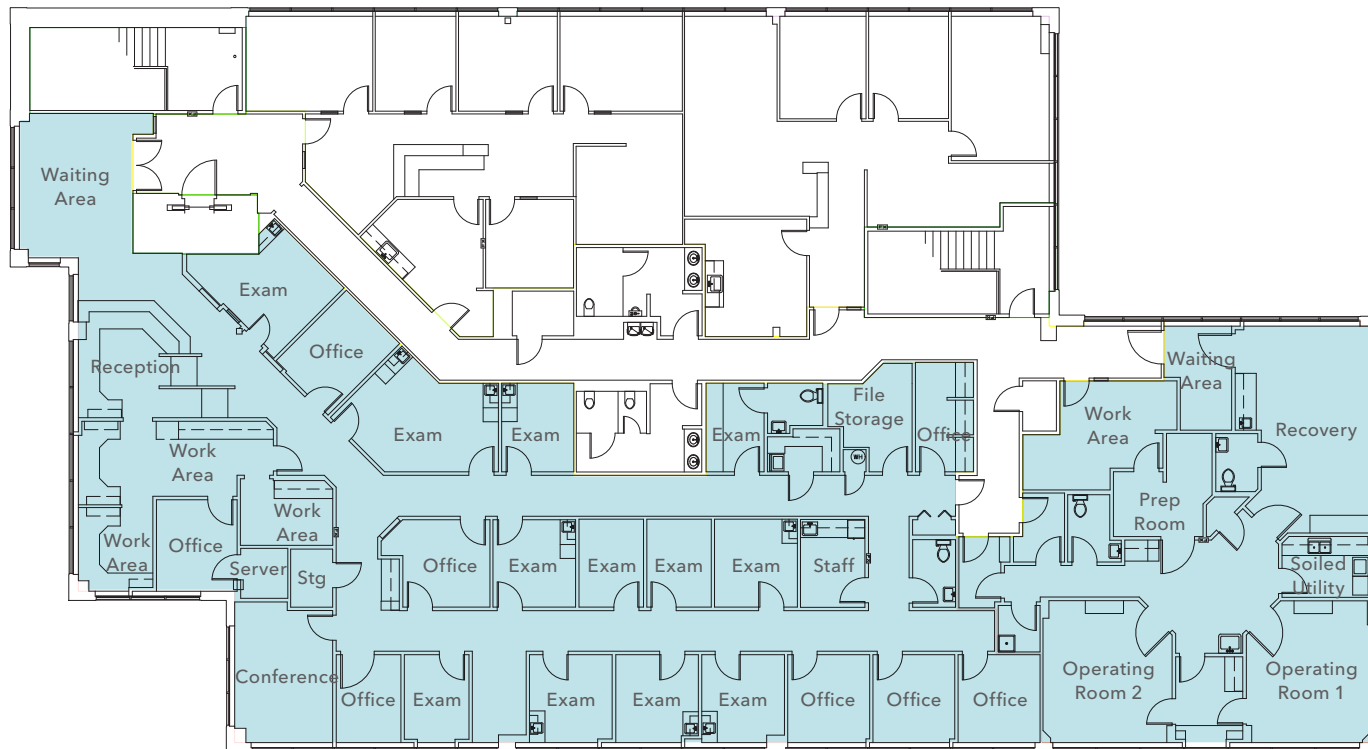
Easy access to I-405 and SR-520 via
Central Way and Lake Washington Blvd

Free 4.0/1,000 RSF parking ratio, both
covered and uncovered available

6 MI
BELLEVUE CBD

4 MIN
REDMOND CBD

SUITE 301/302



±8,611 SF

AVAILABLE OFFICE/MEDICAL

TWO

SURGICAL OPERATORY ROOMS

NOW

AVAILABLE

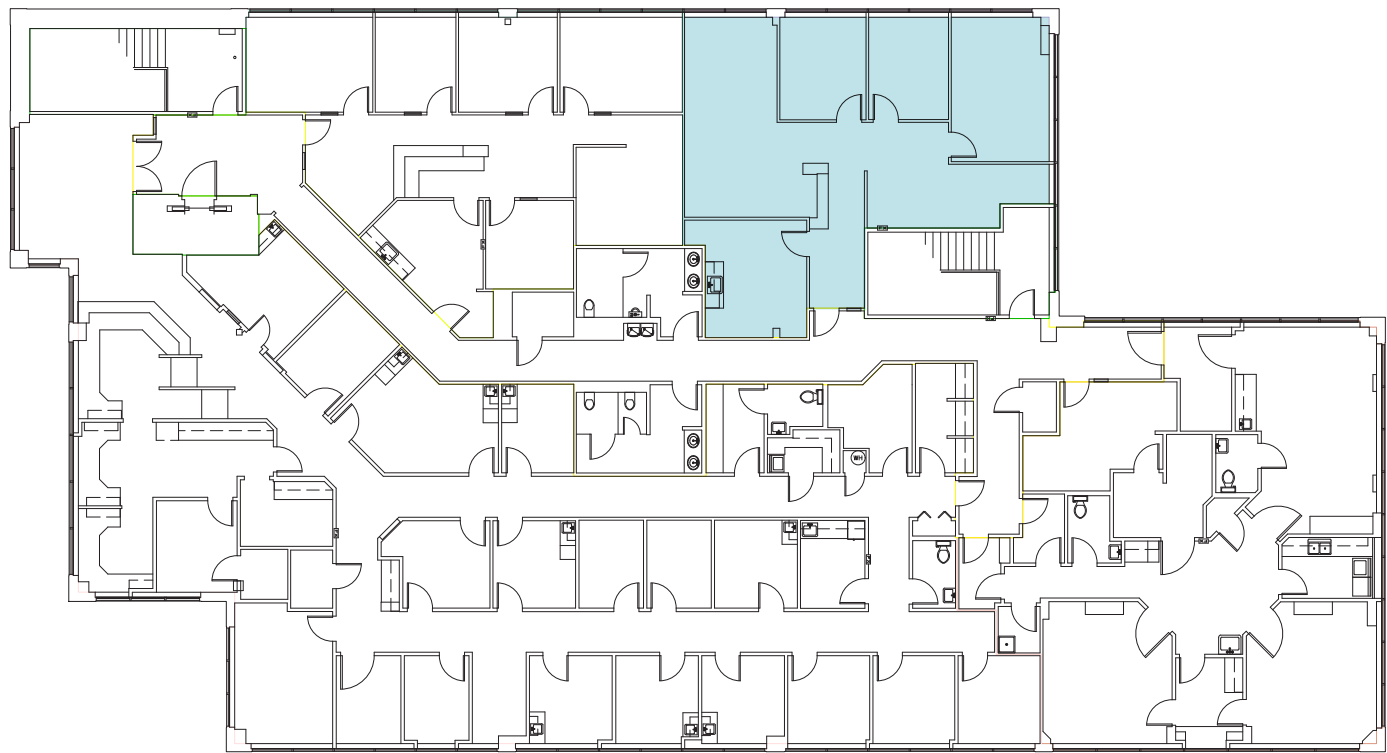
CONTACT

BROKERS FOR RATES

Exterior building signage
is available.



SUITE 303



±1,623 SF

AVAILABLE OFFICE

\$39.00

PSF RATE (NNN)

\$11.50

2026 ESTIMATED NNN'S

NOW

AVAILABLE





For more information, contact

TODD GAUTHIER
425.450.1118
todd.gauthier@kidder.com

JASON BLOOM
425.450.1102
jason.bloom@kidder.com

JACK ALBRECHT
425.450.1114
jack.albrecht@kidder.com

KIDDER.COM

This information supplied herein is from sources we deem reliable. It is provided without any representation, warranty, or guarantee, expressed or implied as to its accuracy. Prospective Buyer or Tenant should conduct an independent investigation and verification of all matters deemed to be material, including, but not limited to, statements of income and expenses. Consult your attorney, accountant, or other professional advisor. All Kidder Mathews designs are the sole property of Kidder Mathews. Branded materials and layouts are not authorized for use by any other firm or person.

