



For Sale | Lease

2902 Hewitt Ave

Everett, WA

Versatile mixed-use building with retail frontage, ample parking, and excellent visibility and access from Hwy-2 and I-5.

PROPERTY DETAILS

- + Lot Size: 15,682 SF
- + Year Built: 2000
- + Zoning: Mixed-Use 7
- + Loading: 1 Grade-level roll-up door
- + Parking: 9 dedicated stalls
- + Available: 04/2026
- + NNN: \$4.00/SF

PROPERTY HIGHLIGHTS

- + High visibility and easy access
- + Located one block from I-5 and Hwy-2
- + Retail frontage and ample parking
- + Perfect for owner-users

TOTAL SF

4,158 SF

ASKING PRICE

\$1,300,000

LEASE RATE

\$18.00

TYPE

NNN

BLAKE STEDMAN

Senior Vice President
+1 425 586 5621
bstedman@nai-psp.com

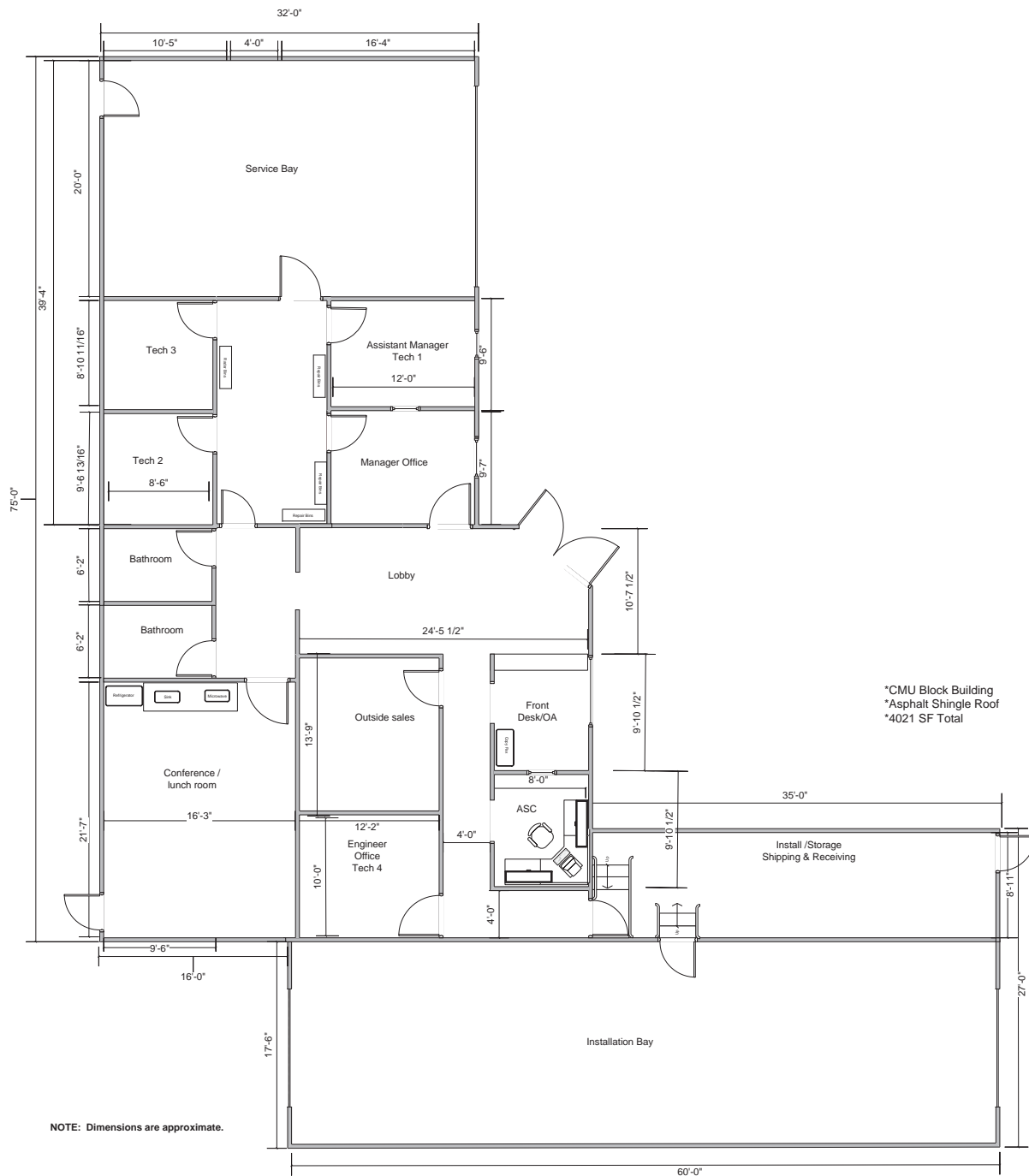
BRET MATYSIK

Vice President
+1 425 586 5617
bmatysik@nai-psp.com

RICHARD ZHOU

Associate
+1 425 586 5623
rzhou@nai-psp.com

Floor Plan



BLAKE STEDMAN
Senior Vice President
+1 425 586 5621
bstedman@nai-psp.com

BRET MATYSIK
Vice President
+1 425 586 5617
bmatysik@nai-psp.com

RICHARD ZHOU
Associate
+1 425 586 5623
rzhou@nai-psp.com



*Mixed-use space in
Everett*



BLAKE STEDMAN
Senior Vice President
+1 425 586 5621
bstedman@nai-psp.com

BRET MATYSIK
Vice President
+1 425 586 5617
brmatysik@nai-psp.com

RICHARD ZHOU
Associate
+1 425 586 5623
rzhou@nai-psp.com



Demographics



2902 HEWITT AVE, EVERETT, WA

	1 MILE	3 MILES	5 MILES
Population	13,463	51,168	135,561
2030 Population	13,903	53,061	140,614
Households	6,308	21,839	52,258
Median Age	39.2	39.4	38.4
Median HH Income	\$67,454	\$82,533	\$98,145

BLAKE STEDMAN

Senior Vice President
+1 425 586 5621
bstedman@nai-psp.com

BRET MATYSIK

Vice President
+1 425 586 5617
bmatysik@nai-psp.com

RICHARD ZHOU

Associate
+1 425 586 5623
rzhou@nai-psp.com

