

Business and Real Estate For Sale
Wolffy's Breakfast Burgers & Brew

NAIBlack



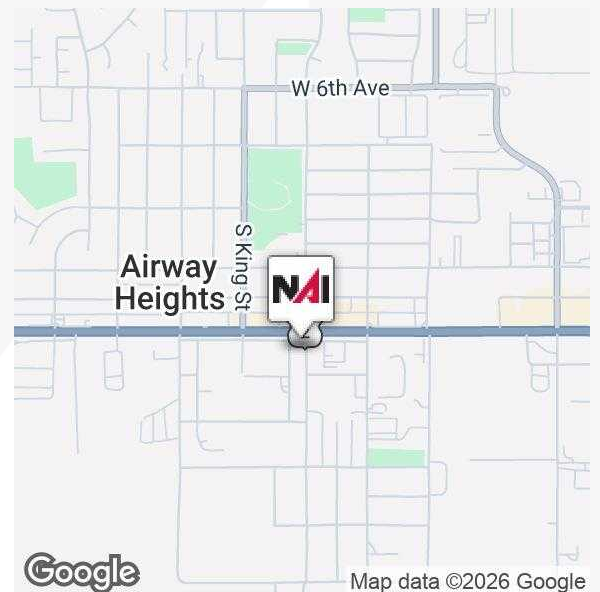
12807 W 14th Ave

Airway Heights, Washington 99001

Property Description

- Consistently High Profits and Gross Sales. Wolffy's Has Been a Well Known Brand in Spokane Since 1988.
- Multiple Trademarks Included with Possibility of Expansion
- 2,233 SF ± Building with 25,800 SF ± of Land
- High Visibility Location On Hwy 2 Between Northern Quest Resort and Casino and Spokane Tribe Resort and Casino
- Current Hours are 8 to 2 PM. Possibility to Increase the Large Profits by Expanding Hours
- Traffic Count: 22,953 VPD ±
- Seller Discretionary Income: \$300,000
- Contact Broker to Sign a Confidential Agreement for Financial Info and to Arrange Tours

Sale Price: \$1,500,000



For more information

John Powers

O: 509 622 3563

jpowers@naiblack.com

Eric Weaver

O: 360 631 1526

eric.weaver@naiblack.com

No warranty or representation, expression or implied, is made as to the accuracy of the information contained herein, and the same is submitted subject to errors, omissions, change or price, rental or other conditions, prior to sale, lease, financing, or withdrawal without notice, and of special listing conditions imposed by our principals no warranties or representations are made as to the condition of the property or any hazards contained therein or any to be implied.

801 W. Riverside Avenue, Suite 300
Spokane, WA 99201
509 623 1000 tel
naiblack.com

Business & Real Estate For Sale
Wolffy's Breakfast Burgers & Brew

NAIBlack



No warranty or representation, expression or implied, is made as to the accuracy of the information contained herein, and the same is submitted subject to errors, omissions, change or price, rental or other conditions, prior to sale, lease, financing, or withdrawal without notice, and of special listing conditions imposed by our principals no warranties or representations are made as to the condition of the property or any hazards contained therein or any to be implied.

801 W. Riverside Avenue, Suite 300
Spokane, WA 99201
509 623 1000 tel
naiblack.com

For Sale
Retail

NAI Black

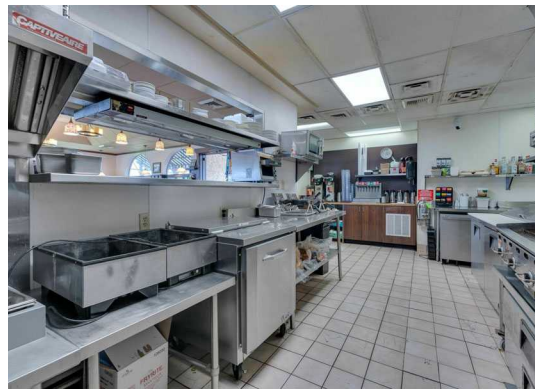


No warranty or representation, expression or implied, is made as to the accuracy of the information contained herein, and the same is submitted subject to errors, omissions, change or price, rental or other conditions, prior to sale, lease, financing, or withdrawal without notice, and of special listing conditions imposed by our principals no warranties or representations are made as to the condition of the property or any hazards contained therein or any to be implied.

801 W. Riverside Avenue, Suite 300
Spokane, WA 99201
509 623 1000 tel
naiblack.com

For Sale
Retail

NAI Black



No warranty or representation, expression or implied, is made as to the accuracy of the information contained herein, and the same is submitted subject to errors, omissions, change or price, rental or other conditions, prior to sale, lease, financing, or withdrawal without notice, and of special listing conditions imposed by our principals no warranties or representations are made as to the condition of the property or any hazards contained therein or any to be implied.

801 W. Riverside Avenue, Suite 300
Spokane, WA 99201
509 623 1000 tel
naiblack.com

Business and Real Estate For Sale
Wolffy's Breakfast Burgers & Brews

NAIBlack



Google

Map data ©2026



Google

Map data ©2025 Google Imagery ©2025 Airbus, Landsat / Copernicus, Maxar Technologies, USDA/FPAC/Geo

No warranty or representation, expression or implied, is made as to the accuracy of the information contained herein, and the same is submitted subject to errors, omissions, change or price, rental or other conditions, prior to sale, lease, financing, or withdrawal without notice, and of special listing conditions imposed by our principals no warranties or representations are made as to the condition of the property or any hazards contained therein or any to be implied.

801 W. Riverside Avenue, Suite 300
Spokane, WA 99201
509 623 1000 tel
naiblack.com



Population	1 Mile	3 Miles	5 Miles
Total Population	8,864	15,363	26,010
Average Age	34	32.7	33.5
Average Age (Male)	35	35	36
Average Age (Female)	34	34	36

Households & Income	1 Mile	3 Miles	5 Miles
Total Households	2,608	5,083	8,943
# of Persons per HH	2.88	2.51	2.60
Average HH Income	\$77,488	\$83,738	\$90,782
Average House Value	\$338,814	\$401,641	\$410,485

Demographics data derived from Esri forecast for 2025

