

LAND FOR SALE

\$1,500,000 | SILVERDALE, WASHINGTON

Approximately

243,523 SF | 5.59 AC

11530 Clear Creek Road Northwest
Silverdale, WA 98383

CAMPING WORLD

THE TRAILS
at Silverdale

ROYCE COTTLE
Senior Vice President
+1 206 999 3483
rcottle@leibsohn.com

 **Leibsohn & Company**
Commercial Real Estate Services

The information contained herein has been received from sources we deem reliable. While we have no reason to doubt its accuracy, we do not guarantee it. You are advised to independently verify all information. COPYRIGHT © LEIBSOHN & COMPANY 2026, WASHINGTON. ALL RIGHTS RESERVED.

EXECUTIVE SUMMARY

Approximately 243,523 SF | 5.59 AC

11530 Clear Creek Rd. NW.
Silverdale, WA 98383

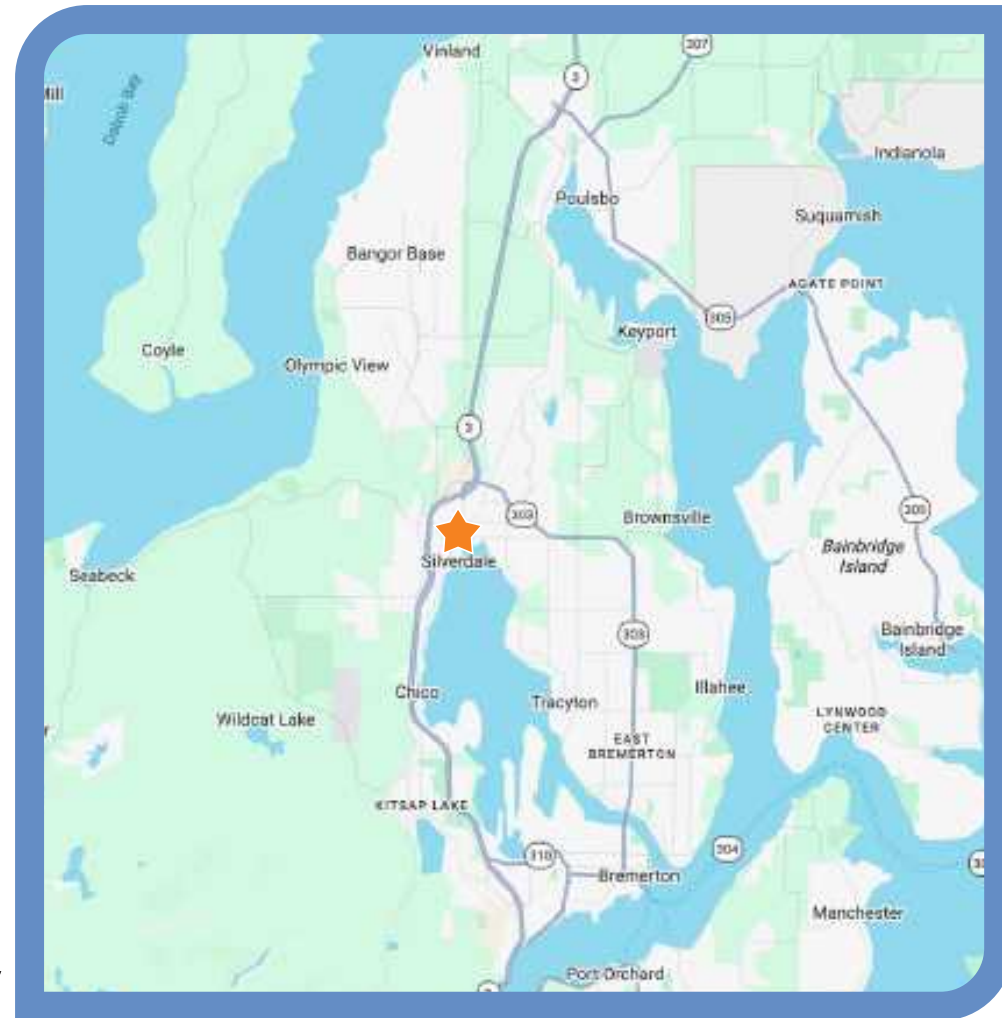
Leibsohn and Company is pleased to present approximately 5.59 acres (243,523 SF) of land at 11530 Clear Creek Rd NW in Silverdale Washington, near the intersection of Hwy 3 and Hwy 303.

The property is zoned Commercial, which allows many uses including, but not limited to: Multi-Family, Attached and Detached Single Family, Auto and Boat Sales, Service, and Rental, Car Wash, Daycare, Hotel, Office, Veterinary Clinic and Restaurants including Drive-Thru.

Neighboring Tenants include Camping World, REI, Costco, Home Depot, Lowes. The property is also minutes from The Trails at Silverdale and the Kitsap Mall.

Approximately

243,523 SF | 5.59 AC



ROYCE COTTLE
Senior Vice President
+1 206 999 3483
rcottle@leibsohn.com

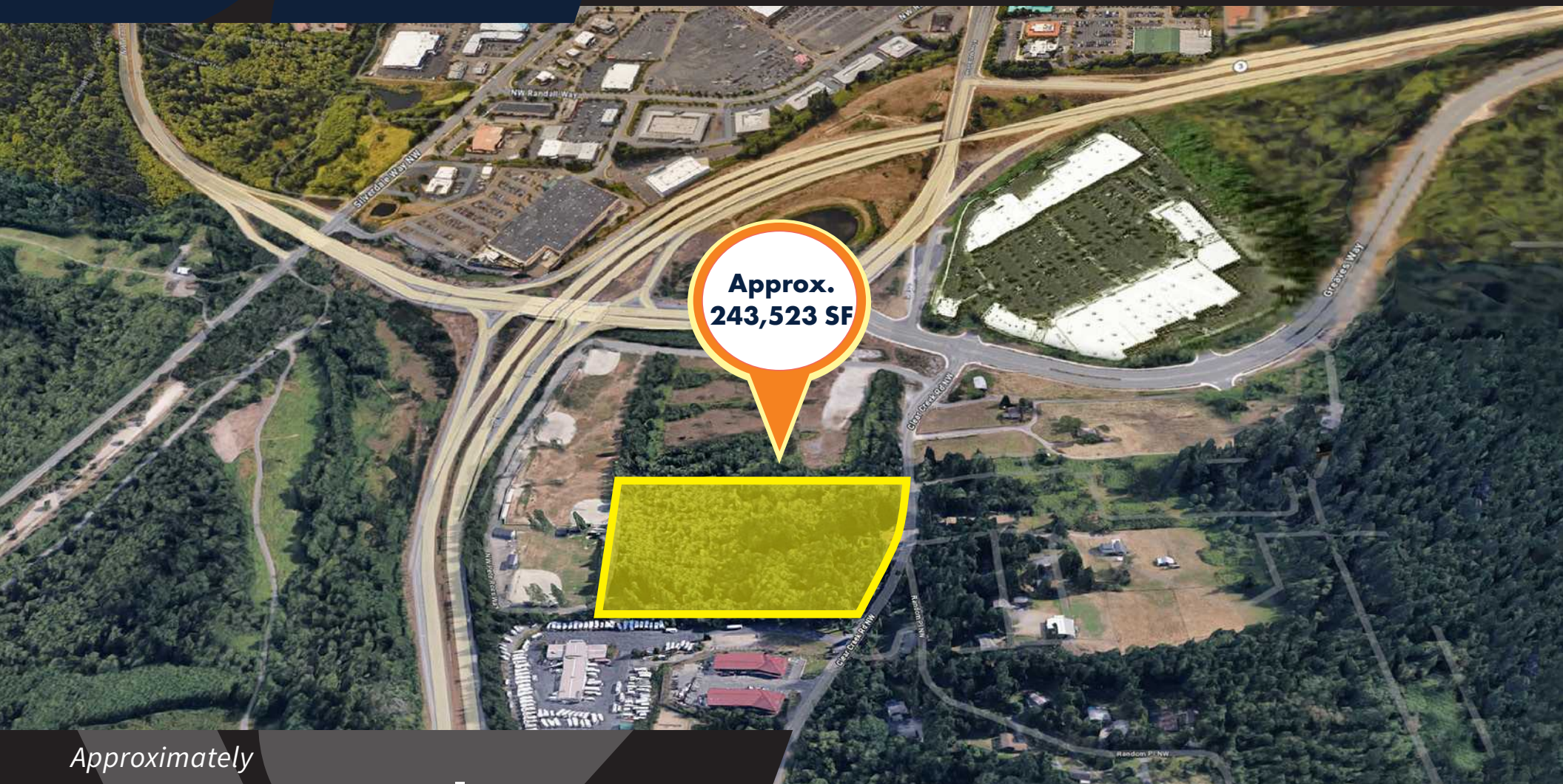
 **Leibsohn & Company**
Commercial Real Estate Services

The information contained herein has been received from sources we deem reliable. While we have no reason to doubt its accuracy, we do not guarantee it. You are advised to independently verify all information. COPYRIGHT © LEIBSOHN & COMPANY 2026, WASHINGTON. ALL RIGHTS RESERVED.

PROPERTY LOCATION

Approximately 243,523 SF | 5.59 AC

11530 Clear Creek Rd. NW.
Silverdale, WA 98383



Approximately

243,523 SF | 5.59 AC

ROYCE COTTLE
Senior Vice President
+1 206 999 3483
rcottle@leibsohn.com

 **Leibsohn & Company**
Commercial Real Estate Services

The information contained herein has been received from sources we deem reliable. While we have no reason to doubt its accuracy, we do not guarantee it. You are advised to independently verify all information. COPYRIGHT © LEIBSOHN & COMPANY 2026, WASHINGTON. ALL RIGHTS RESERVED.

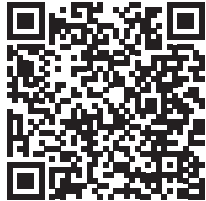
PROPERTY INFO. | SITE PLAN

11530 Clear Creek Rd. NW.
Silverdale, WA 98383

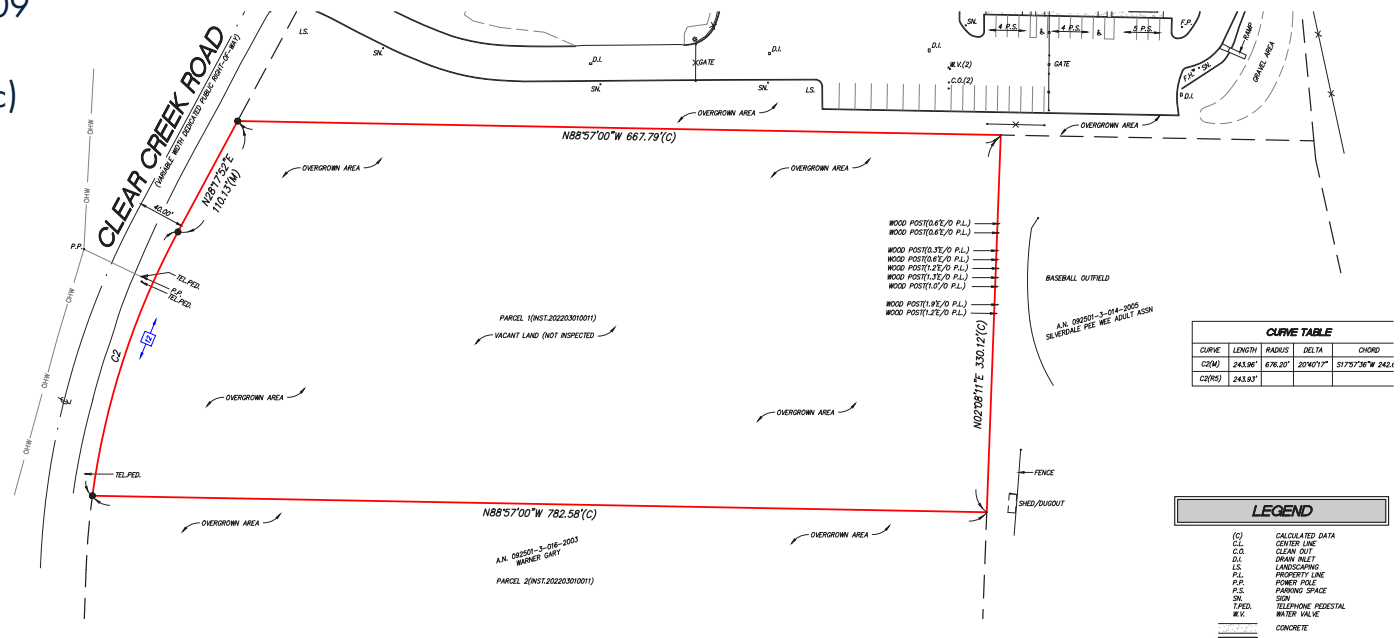
Land Area: 243,523 SF (5.59 AC)

Kitsap Co. APN: 092501-3-036-2009

Zoning: Commercial (19-60 DU/Ac)



Scan QR
or Click to Access
Kitsap Co., WA
Zoning



Approximately

243,523 SF | 5.59 AC

ROYCE COTTLE
Senior Vice President
+1 206 999 3483
rcottle@leibsohn.com

Leibsohn & Company
Commercial Real Estate Services

The information contained herein has been received from sources we deem reliable. While we have no reason to doubt its accuracy, we do not guarantee it. You are advised to independently verify all information. COPYRIGHT © LEIBSOHN & COMPANY 2026, WASHINGTON. ALL RIGHTS RESERVED.

AREA INFORMATION

11530 Clear Creek Rd. NW.
Silverdale, WA 98383

SUBJECT
PROPERTY

AREA DEMOGRAPHICS



1
MILE
RADIUS



7,083
PEOPLE
37
AVG. AGE



2,963
HOUSEHOLDS



\$90,994
AVG. HH INCOME



3
MILE
RADIUS



39,387
PEOPLE
39
AVG. AGE



15,611
HOUSEHOLDS



\$111,647
AVG. HH INCOME



5
MILE
RADIUS



81,064
PEOPLE
40
AVG. AGE



30,039
HOUSEHOLDS



\$110,225
AVG. HH INCOME



Approximately

243,523 SF | 5.59 AC

ROYCE COTTLE
Senior Vice President
+1 206 999 3483
rcottle@leibsohn.com

Leibsohn & Company
Commercial Real Estate Services

The information contained herein has been received from sources we deem reliable. While we have no reason to doubt its accuracy, we do not guarantee it. You are advised to independently verify all information. COPYRIGHT © LEIBSOHN & COMPANY 2026, WASHINGTON. ALL RIGHTS RESERVED.