

FOR SALE | EASTSIDE MEDICAL CLINIC



1100 EASTSIDE ST SE, OLYMPIA, WA 98501

PROPERTY OVERVIEW

A versatile 3,740 square foot professional space in the heart of Olympia. Situated on 0.29 acres with ample on-site parking, this two-story structure is currently configured as a veterinary clinic featuring a reception area, large patient rooms, a laboratory, and a second-floor office with a breakroom.

The property provides excellent visibility within the Olympia submarket and is eligible for conventional or SBA financing.

SALE PRICE: \$700,000

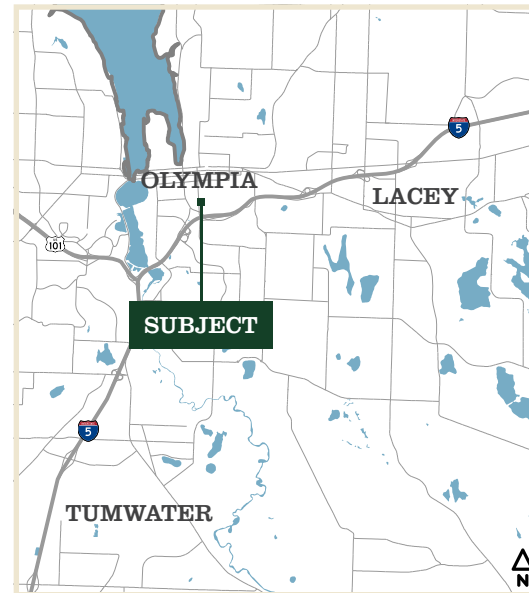
BUILDING: 3,470 SF

ZONING: PO/RM

LAND: 12,500 SF

PARCEL# 40800100900

CBA# 44195462



360°

greene.properties/1100EastsideST_VT



Quint Newell

COMMERCIAL BROKER

360.688.8333

quintn@greenecommercial.com

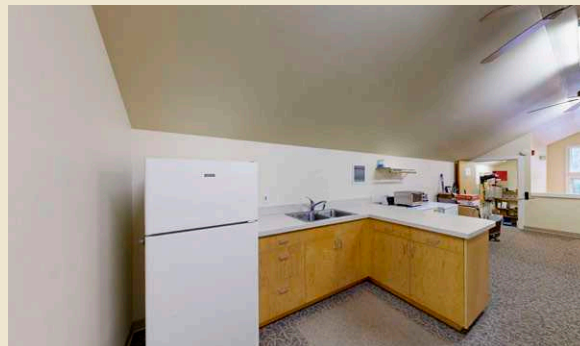
The information contained herein has been obtained from sources believed to be reliable. However, we make no guarantees, warranties, or representations as to the completeness or accuracy thereof. All information is submitted subject to errors, omissions, change of price, rental or other conditions, prior sale, lease or financing, or withdrawal without notice. Any projections, opinions, assumptions, or estimates used are for illustrative purposes only and do not constitute a legal survey (RCW 18.43). All boundaries are approximate and must be independently verified by a licensed professional land surveyor. The creator assumes no liability for the accuracy of these depictions.



**GREENE
COMMERCIAL**

360.528.4167

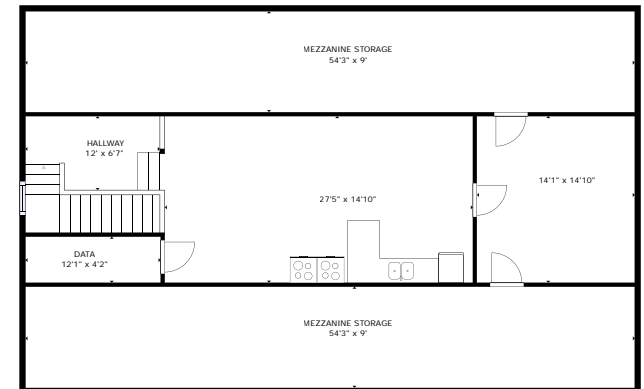
www.greenecommercial.com



FIRST FLOOR



SECOND FLOOR



THIS FLOORPLAN IS NOT TO SCALE
SIZES AND DIMENSIONS ARE APPROXIMATE, ACTUAL MAY VARY.

Quint Newell
COMMERCIAL BROKER
360.688.8333
quintn@greenecommercial.com

360°
greene.properties/1100EastsideST_VT